



Panasonic SDR H-100 Zoom Lever Replacement

If your Panasonic SDR H-100 zoom lever is...

Written By: Caleb Osborne



INTRODUCTION

If your Panasonic SDR H-100 zoom lever is sticking, working inconsistently, or not working at all, then use this guide to replace the malfunctioning part.

The zoom function on the Panasonic SDR H-100 allows the user to move their point of view closer to or further from the subject.

Before beginning, make sure to completely power off your device and disconnect it from any external power sources.

TOOLS:

[Screwdriver](#) (1)

[Tweezers](#) (1)

[iFixit Opening Tool](#) (1)

Step 1 — Remove Bottom Screws



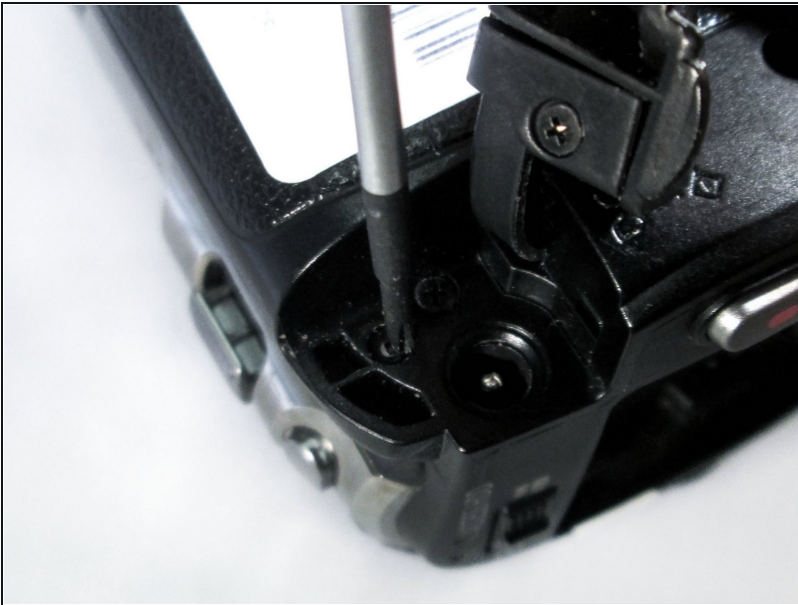
- Remove the four 4-mm screws on the bottom of the camcorder.
 - ⓘ The screws are two different colors: three blacks and one silver.

Step 2 — Remove Side Screws



- Remove the three 6-mm screws on the hand-strap side of the camera.

Step 3 — Remove DC Input Terminal Screws



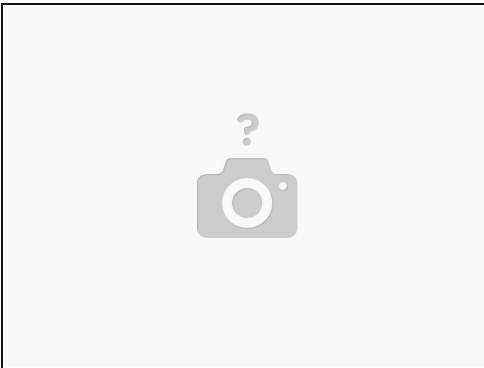
- Pull out the charging port (DC input terminal) cover and remove the 4-mm screw located next to the input terminal.

Step 4 — Remove LCD Monitor Screws



- Flip out the LCD screen to expose the inner screws. Remove the two black 4-mm screws.
 - ① One screw is located by the hinge of the LCD screen. The second is close to the upper-right corner of the camcorder body.

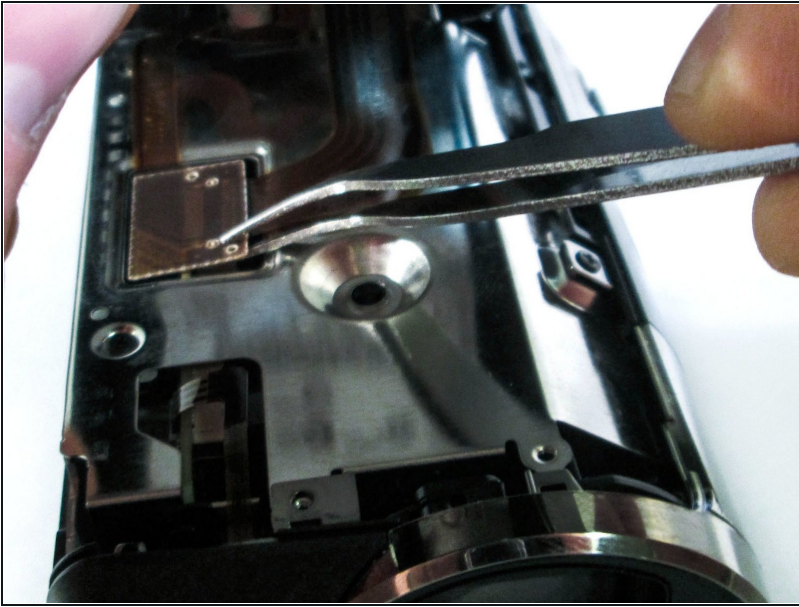
Step 5 — Detach Casing from Body



- Using a firm hold on both sides of the camcorder, gently pull apart the casing under the hand strap.
 - ① Pressure should be evenly distributed across entire device.

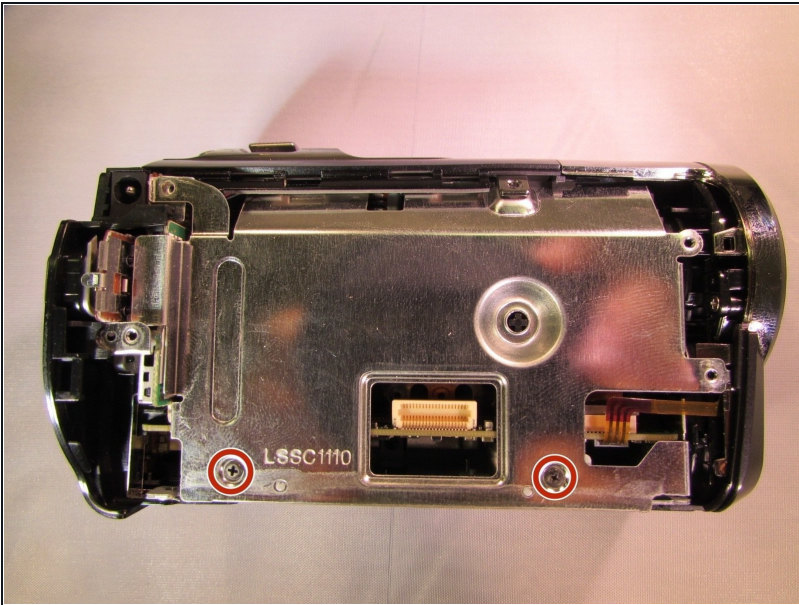
⚠ Detach gently so the ribbon cable is not damaged!

Step 6 — Detach Ribbon Cable from Body



- Use [tweezers](#) to grab the ribbon cable at the connection point and slowly lift it away from the connector.
- ① This linkage point connects the HDD directly to the motherboard.

Step 7 — Rear Cover



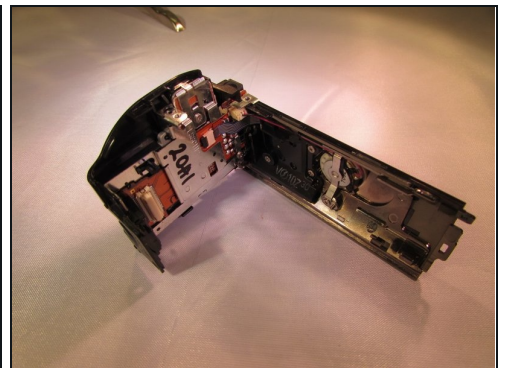
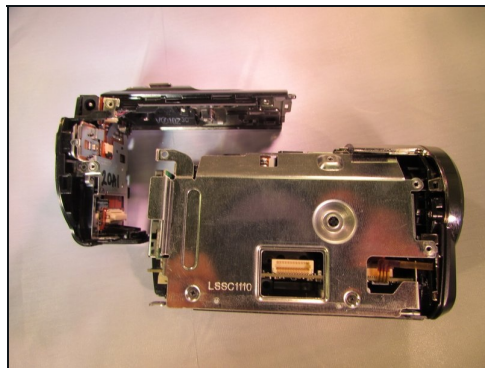
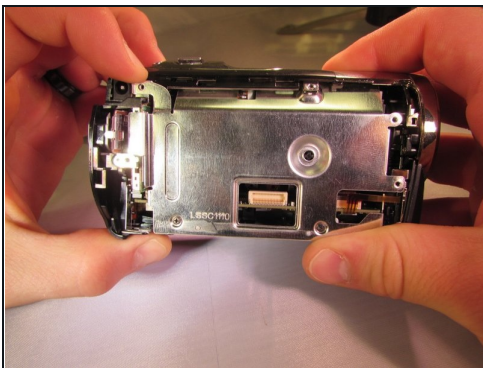
- Unscrew the two black 4 mm screws from metal casing around the motherboard.

Step 8



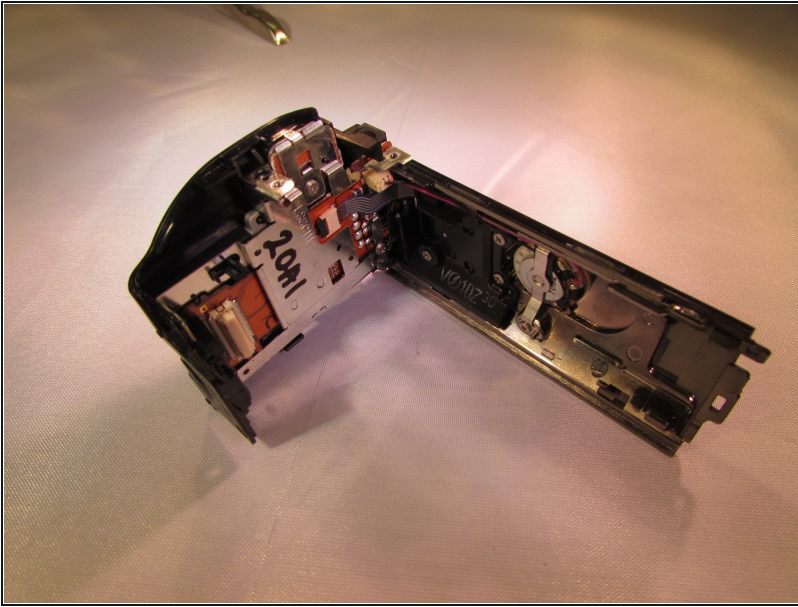
- Remove the black 4 mm screw from the back of the camcorder underneath where the battery would have been.

Step 9



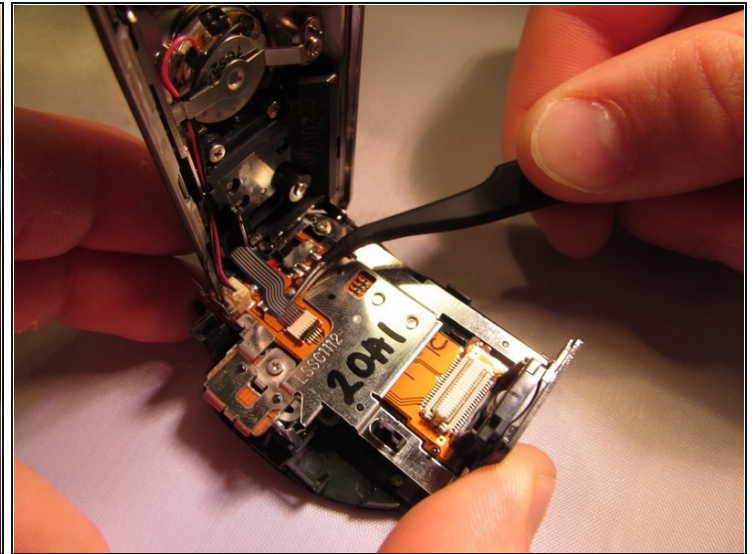
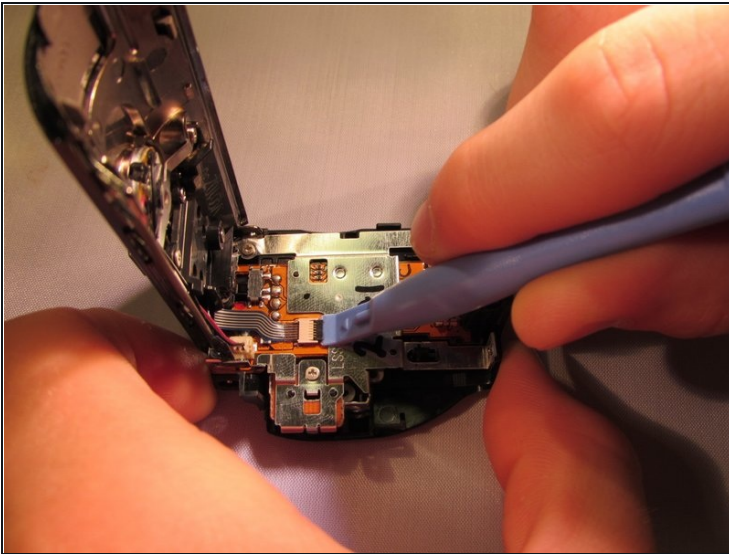
- Pull the plastic cover on the back out and up slightly until the back feels like it's free, then pull back on the plastic (The top cover piece and back will be detached).

Step 10 — Zoom Lever



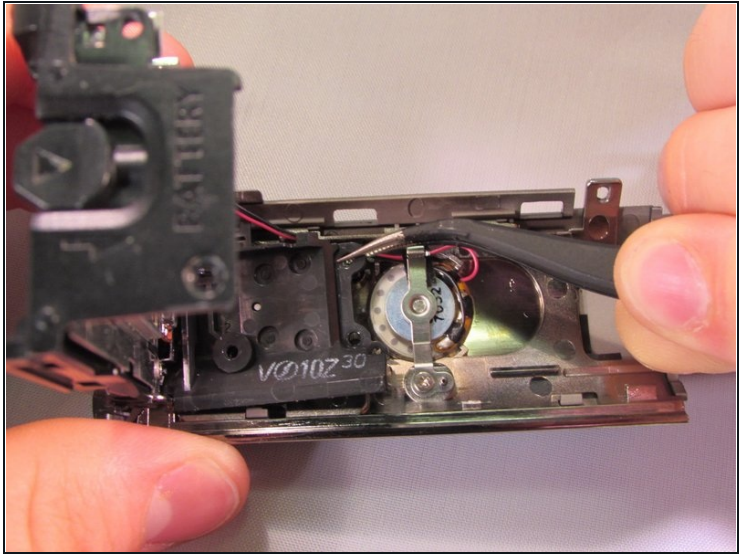
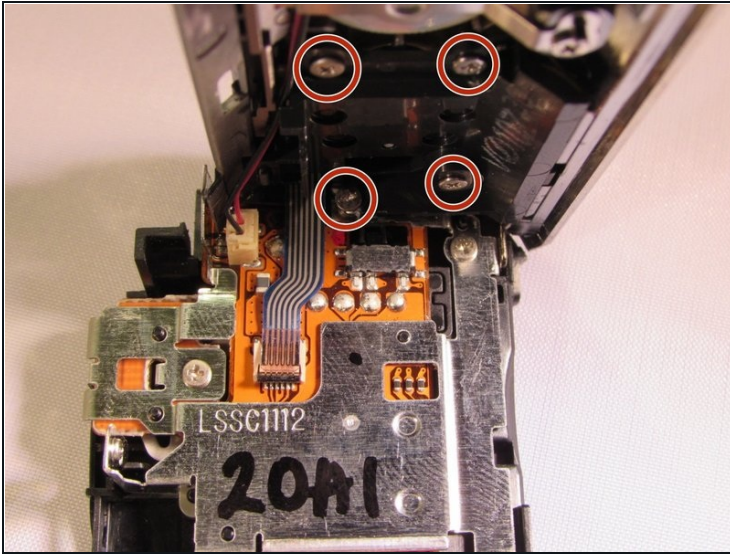
- Grab the plastic piece that covers the back of the camcorder.

Step 11



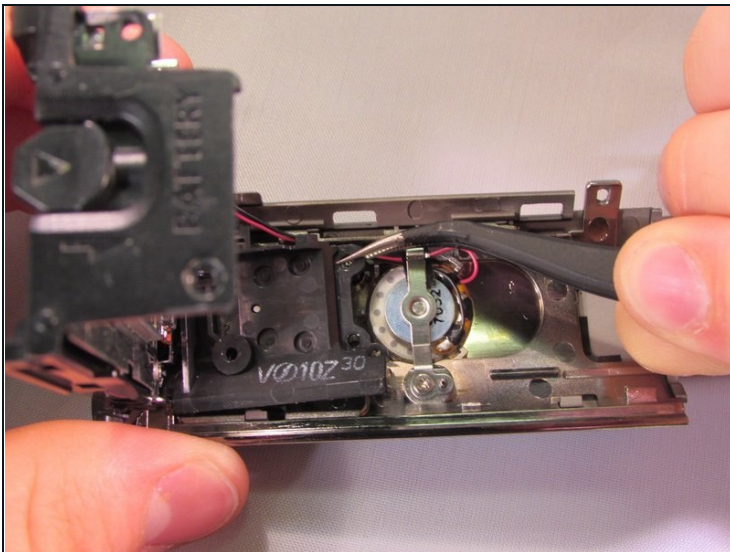
- Unlock the copper ribbon cable using the blue pry tool.
- Gently detach the ribbon cable using the [tweezers](#).

Step 12



- Unscrew the four silver 4 mm screws underneath the outer plastic cover.
- This gives you access to the bottom of the zoom lever.

Step 13



- Using tweezers, pull on the black piece that is connected to the underside of the zoom lever while also pushing the back piece at an angle.
- **Do not disconnect the red and black wires while you are doing this.**
- Replace with new zoom lever.

To reassemble your device, follow these instructions in reverse order.