



2009 Subaru Impreza WRX Front Door Panel Replacement

Guide for replacing the front door panel.

Written By: Alex Spady



INTRODUCTION

If followed, this guide for front door panel replacement will result in the successful removal of the front door panel. Allowing you to reach the interior parts of the door, or replace a broken panel.



TOOLS:

- [6-in-1 Screwdriver](#) (1)
 - [Phillips #0 Screwdriver](#) (1)
-

Step 1 — Front Door Panel



- Pry up the plastic tab from inside the handle located on the front door armrest.

Step 2



- Pry up the plastic tab from inside the door handle housing.

Step 3



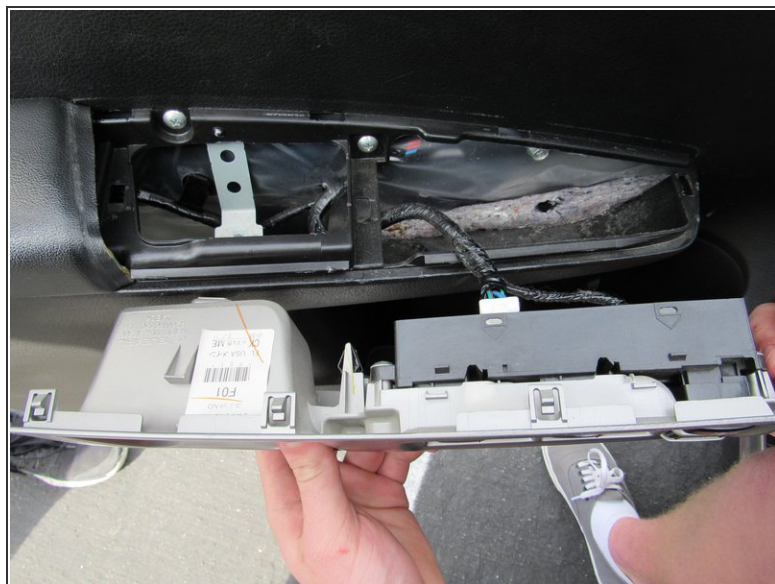
- Use your Phillips screwdriver to unscrew the 8x3/4" Phillips screw by the upper door handle.
- Unscrew the second 8x3/4" Phillips screw located inside the lower door handle on the door's armrest.

Step 4



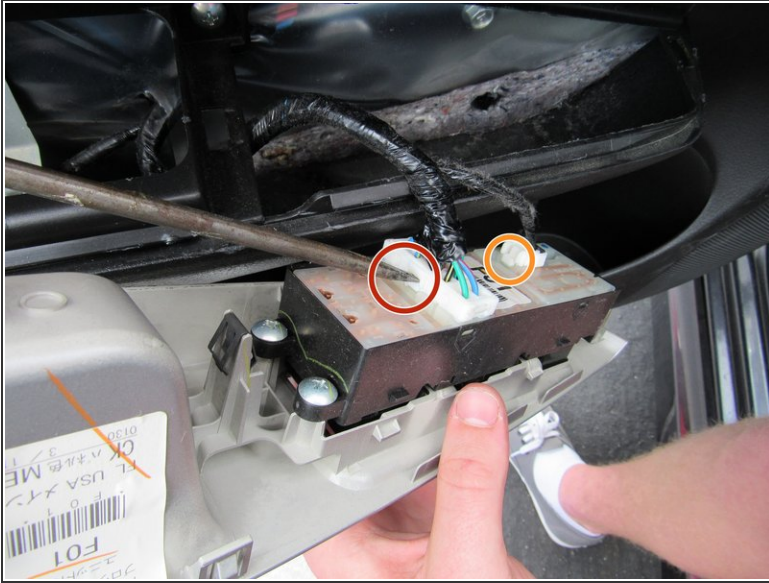
- Pry off the entire door speaker and its housing located inside of the mirror.
- Using your flathead screwdriver, pry up the latch connecting the two white cords and disconnect the speaker.

Step 5



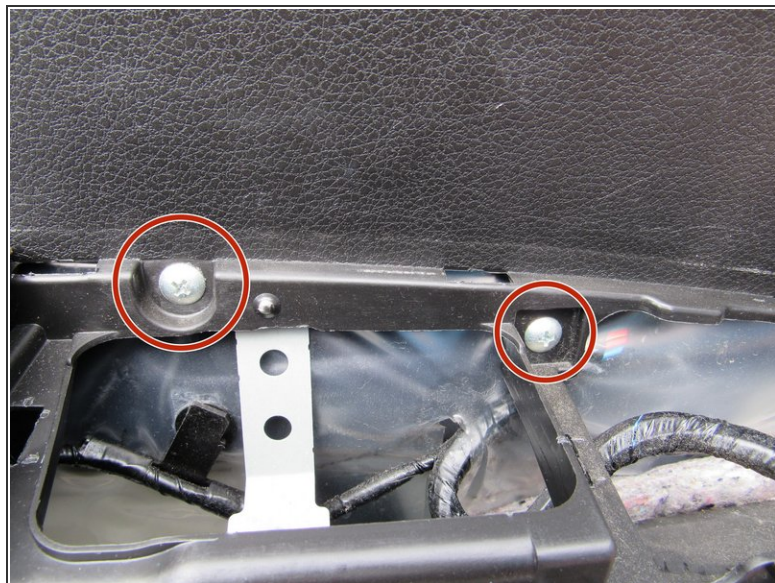
- Using your flathead screwdriver, pry the middle plastic door piece away from the armrest.

Step 6



- Using your flathead screwdriver, press the white tab on the side of the larger cord bundle connecting the assembly.
 - The larger cord bundle now can be pulled out.
 - Press the white tab on the smaller cord bundle and disconnect the smaller cord bundle from the assembly.
- ⓘ Take note of the two screws that are now visible in the middle of the door panel.

Step 7



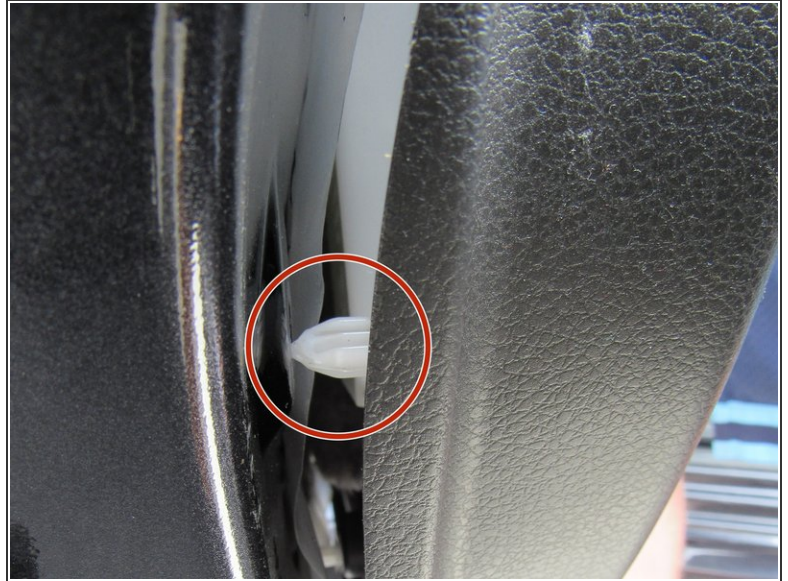
- Unscrew both 8x3/4" Phillips screws from the middle of the door panel using your Phillips screwdriver.

Step 8



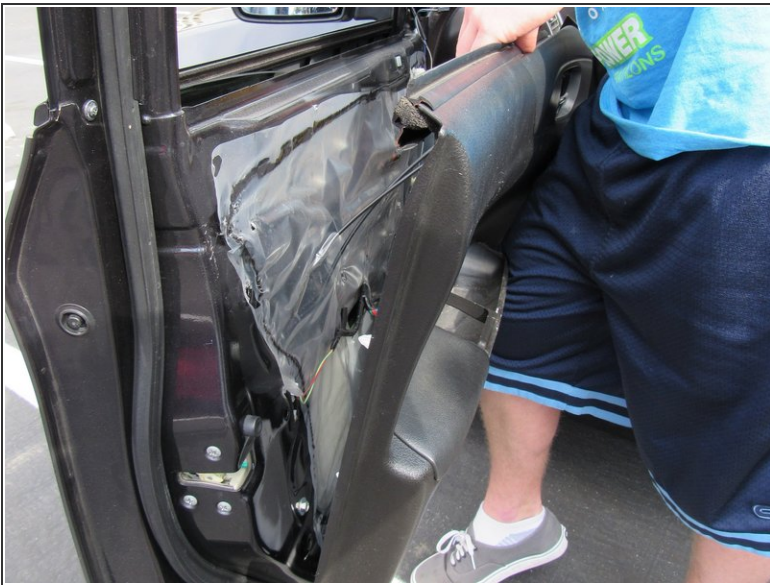
- Pry the left side of the door panel away from the door using a flathead screwdriver.
 - It may be easiest to start by prying away where the red circle is located.

Step 9



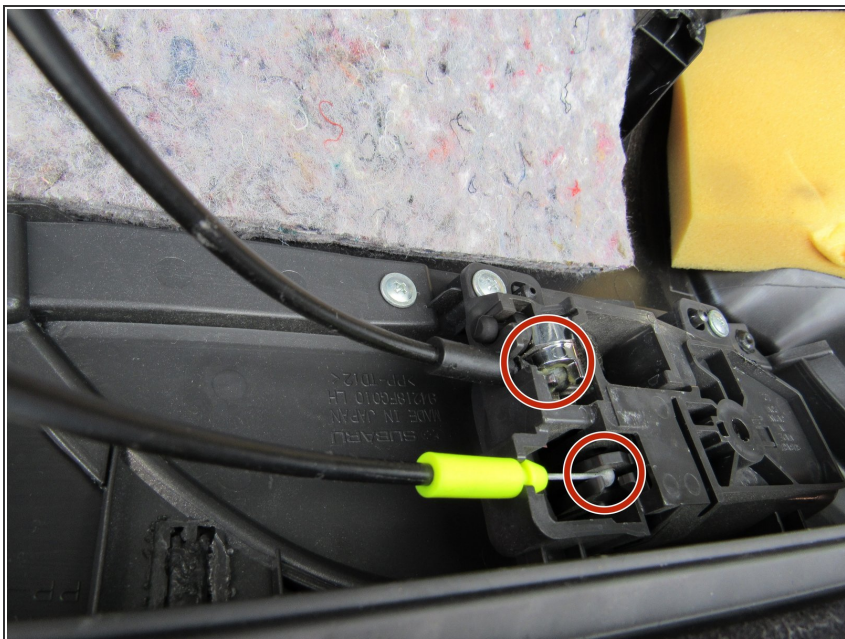
- Using your hands now, pry the door panel away from the door.
- You will hear a series of pops when the white tabs disconnect from the door.

Step 10



- Finish pulling the door off of the frame, now that all the clips have been disconnected.
- ⓘ Pull the door from the top, not the bottom or sides.

Step 11



- Disconnect the final two power window cables that connect the door panel to the door frame by pulling both out of their sockets.
- Congratulations! You are now done.

To reassemble your device, follow these instructions in reverse order.