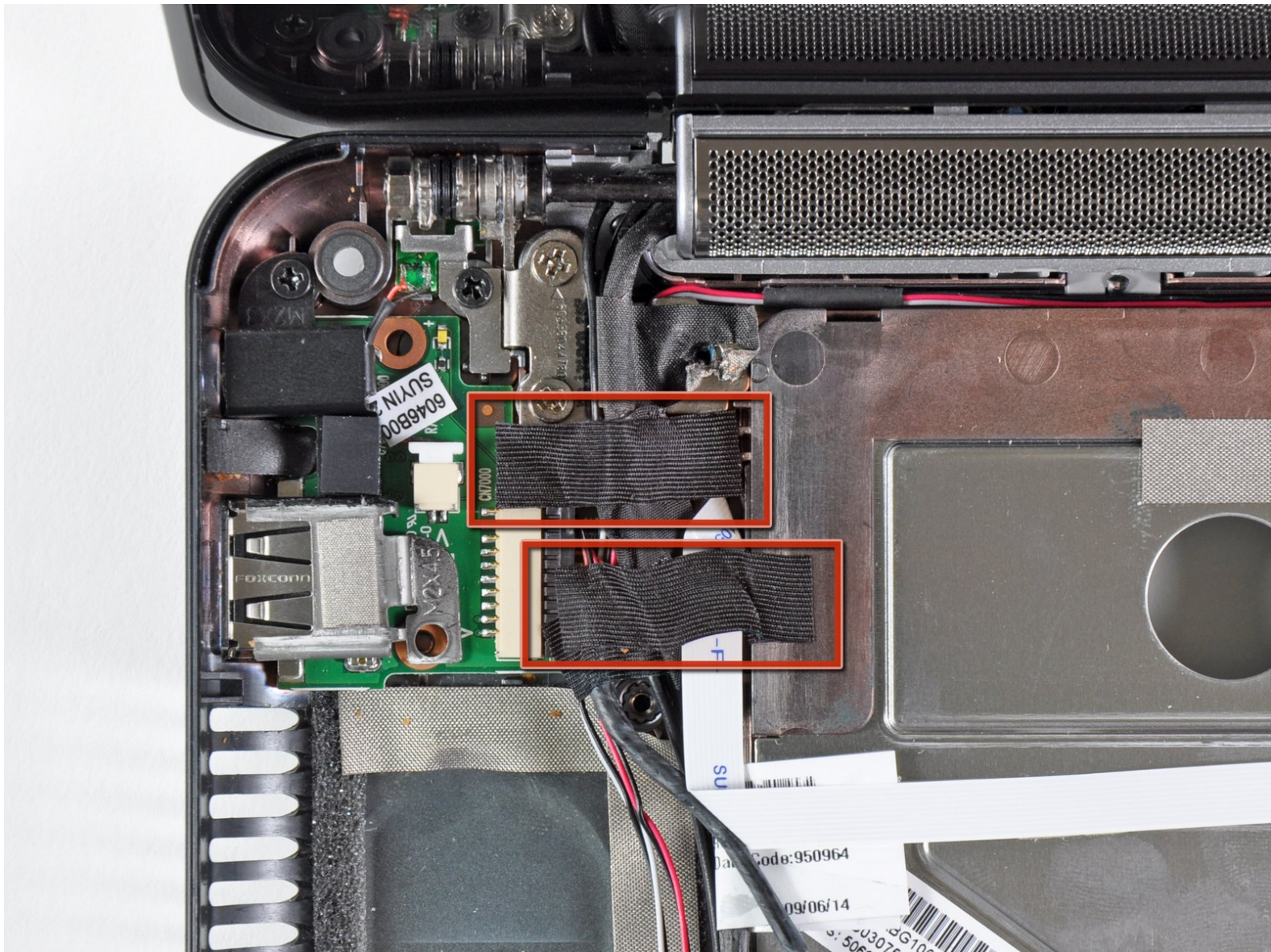




HP Mini 1000 USB & Power Board Replacement

Written By: Walter Galan



INTRODUCTION

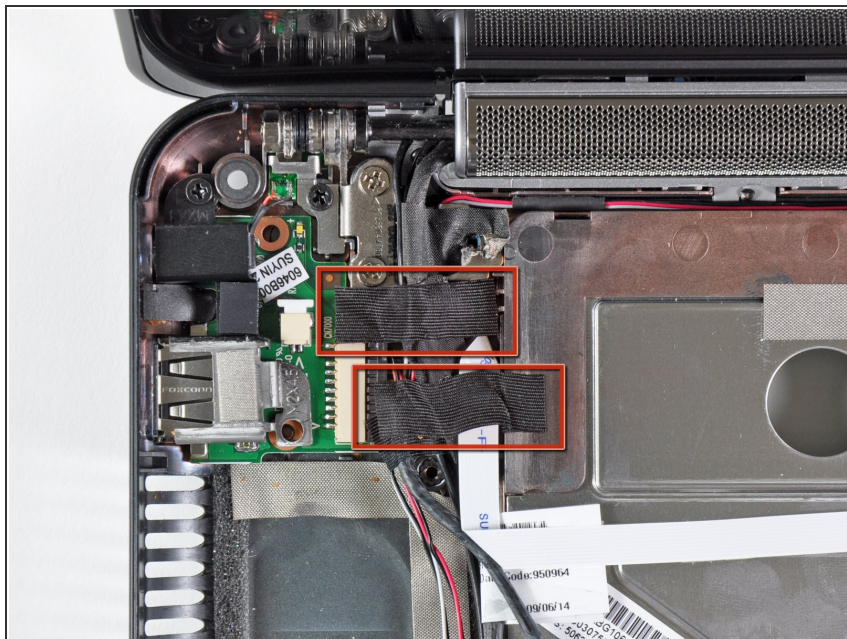
This guide is used as a prereq to other guides.



TOOLS:

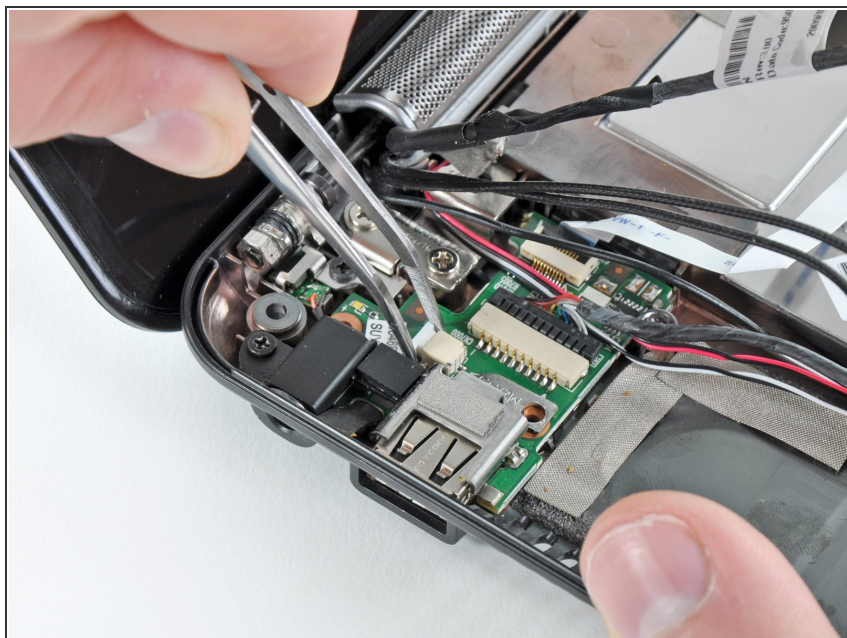
- [Tweezers](#) (1)
 - [Phillips #00 Screwdriver](#) (1)
-

Step 1 — USB & Power Board



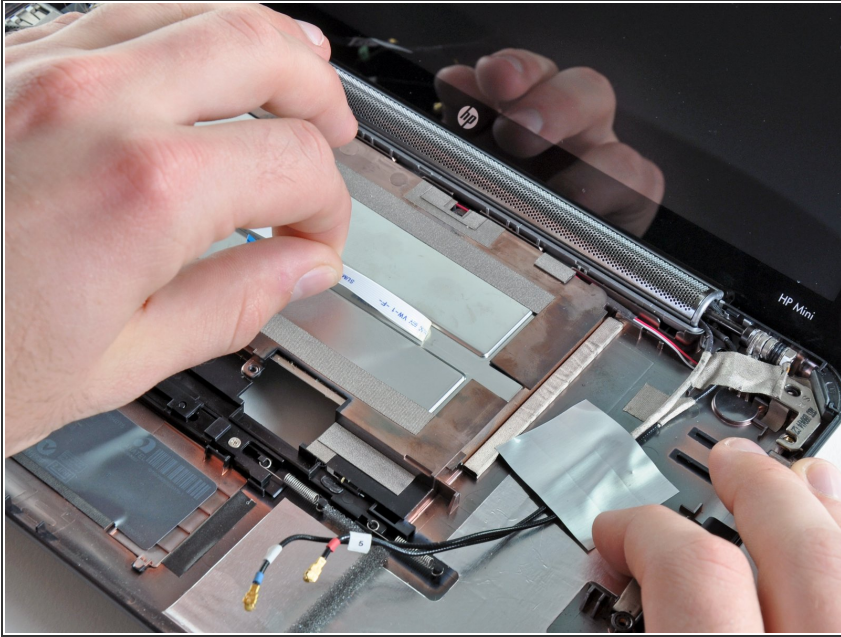
- If present, remove the two pieces of tape covering the cables routed near the USB and power board.

Step 2




- Use a pair of tweezers to pull the internal display switch cable straight away from its socket on the USB and power board.

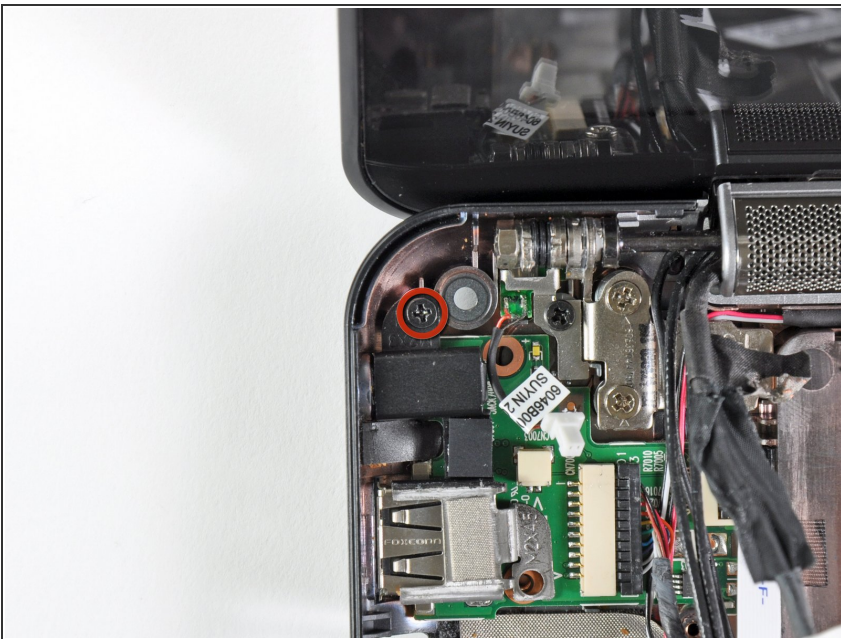
Step 3



- Peel and de-route the SIM card ribbon cable from its channel on top of the underside of the battery compartment.

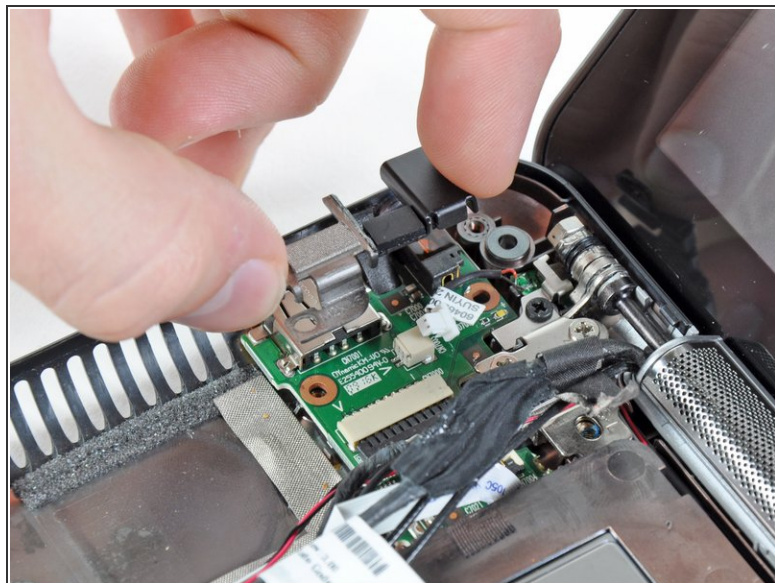
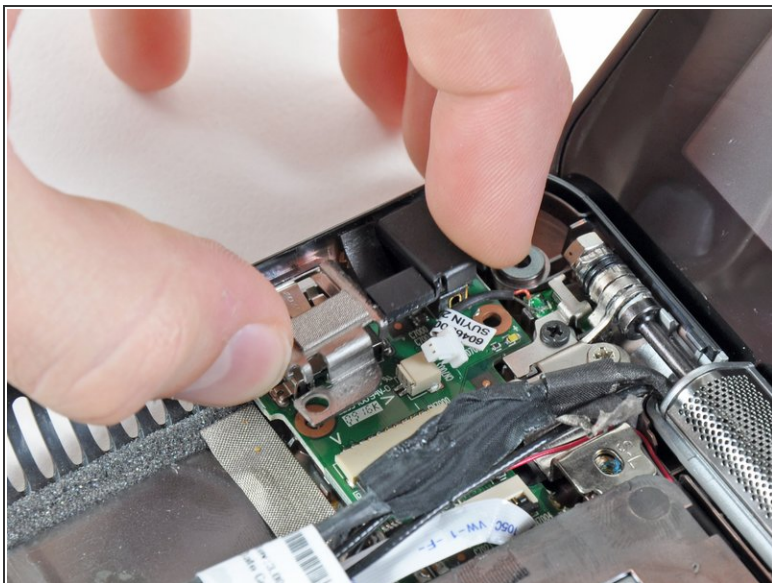
 The SIM card ribbon cable is still connected to the USB and power board. **Do not completely remove it yet.**

Step 4



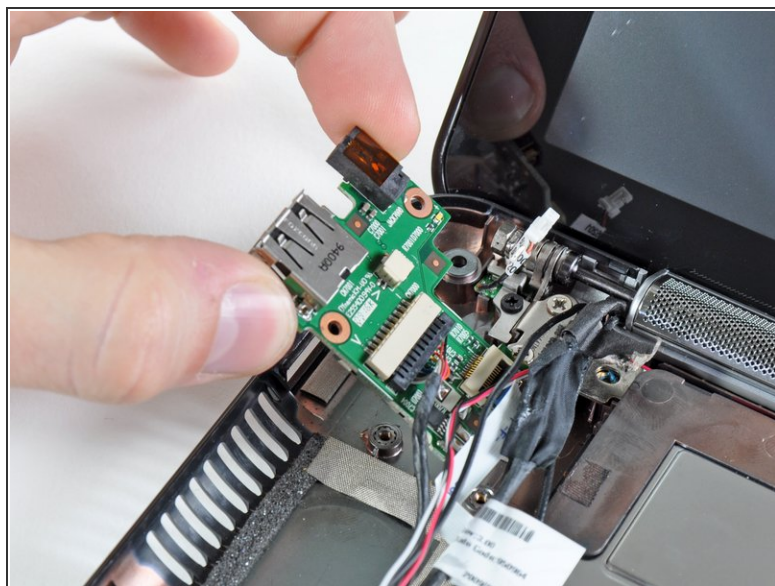
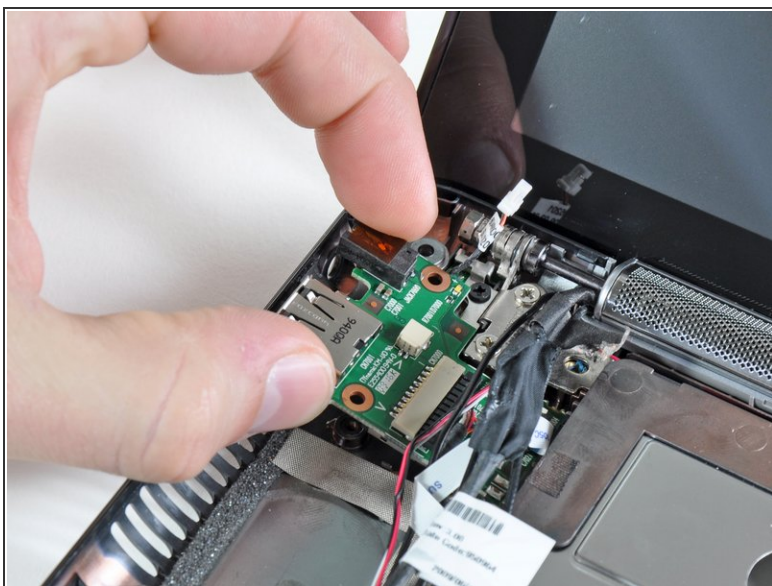
- Remove the single 3 mm Phillips screw that secures the USB and power board as well as the DC jack bracket to the lower case.

Step 5



- Lift the DC jack bracket up off the USB and power board.

Step 6



- Grasp the USB and power board from its left edge, nearest the ports side.
- Remove the USB and power board straight away from its recess in the lower case, minding any cables that may get tangled.

To reassemble your device, follow these instructions in reverse order.