



# HP Mini 1000 Speaker Grill Replacement

Replace a cosmetically damaged speaker grill on your HP Mini 1000.

Written By: Walter Galan



---

## INTRODUCTION

Use this guide to replace a cosmetically damaged speaker grill.

---



### TOOLS:

- [Phillips #0 Screwdriver](#) (1)
  - [iFixit Opening Tools](#) (1)
  - [Spudger](#) (1)
-

## Step 1 — Battery



- With the case closed, place the Mini 1000 top-side down on a flat surface.
- Push both of the battery release latches toward each other.

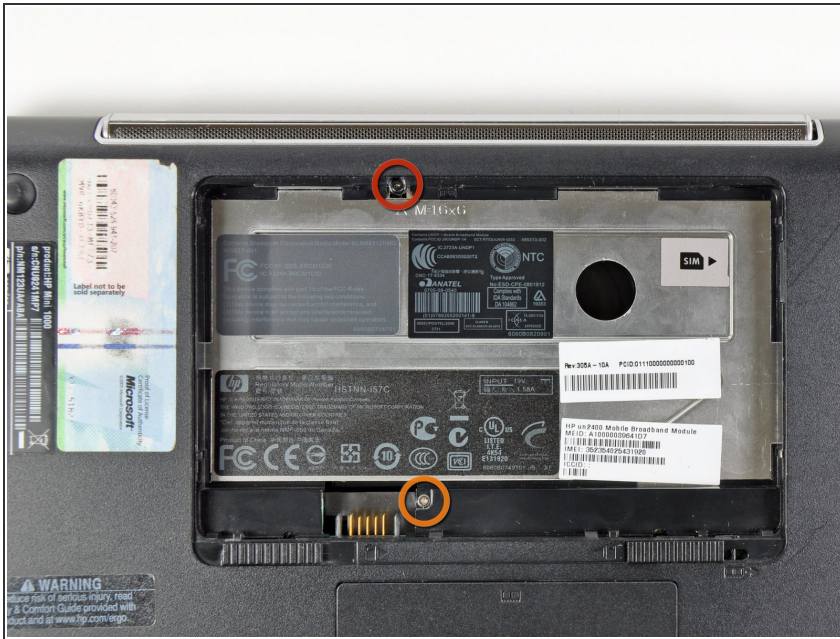
## Step 2



- Lift the battery out of the Mini 1000 from the edge closest to the release latches.



## Step 3 — Keyboard



- Remove the following two screws:
  - One 6 mm Phillips screw
  - One 4 mm Phillips screw

## Step 4



- i** To facilitate the removal of the keyboard, it is recommended to push the keyboard outwards with one hand through the opening (highlighted in the third picture) located on the backside of the Mini 1000.
- While pushing through the opening with one hand, grasp the left upper edge with the other hand and slightly pull the keyboard towards you.
  - Once an opening has been established, grasp the keyboard and slowly lift it upwards along the upper perimeter of the top edge.



## Step 5



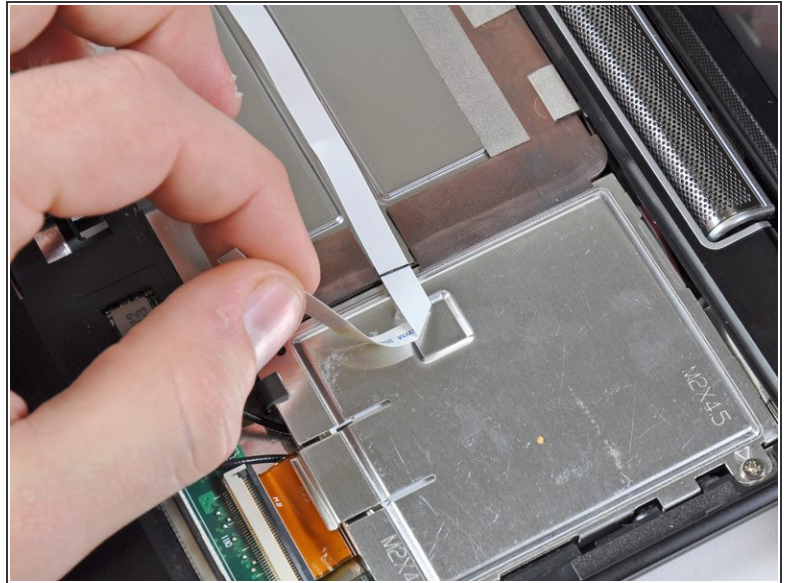
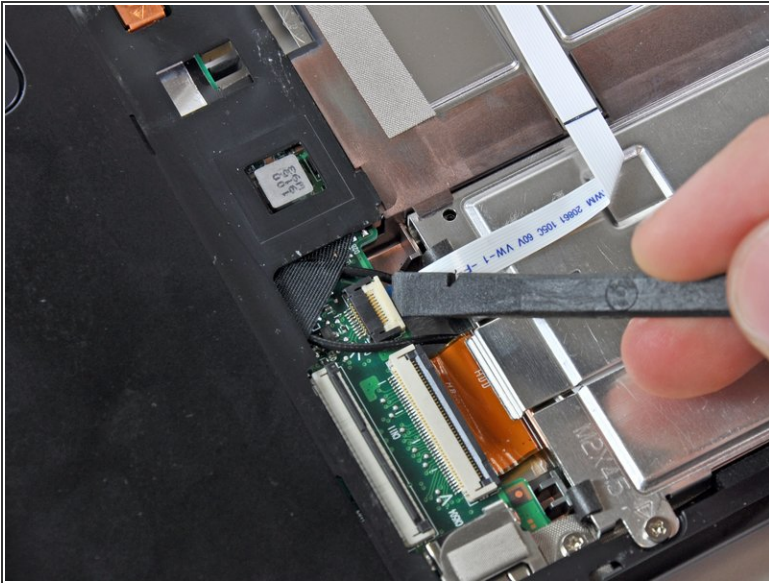
- Lift the keyboard out of the upper case, minding the cable that is still connecting it to the motherboard.

## Step 6



- Use your fingernail or the flat end of a spudger to flip up the retaining flap on the keyboard cable ZIF socket.
- ⚠ Be sure you are prying up on the retaining flap, **not** the socket itself.
- Pull the cable out of its socket and remove the keyboard.

## Step 7 — Hard Drive



- Use your fingernail or the flat end of a spudger to flip up the retaining flap on the SIM card ribbon cable ZIF socket.

⚠ Be sure you are prying up on the retaining flap, **not** the socket itself.

- Pull the SIM card ribbon cable out of its socket and peel it off the top of the hard drive enclosure.

## Step 8

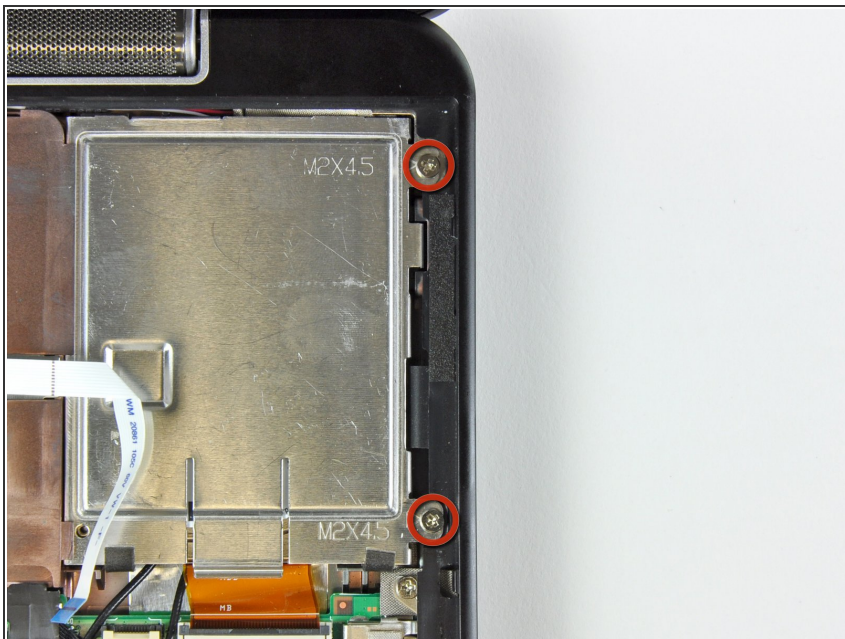


- Use your fingernail or the flat end of a spudger to flip up the retaining flap on the hard drive cable ZIF socket.

⚠ Be sure you are prying up on the retaining flap, **not** the socket itself.

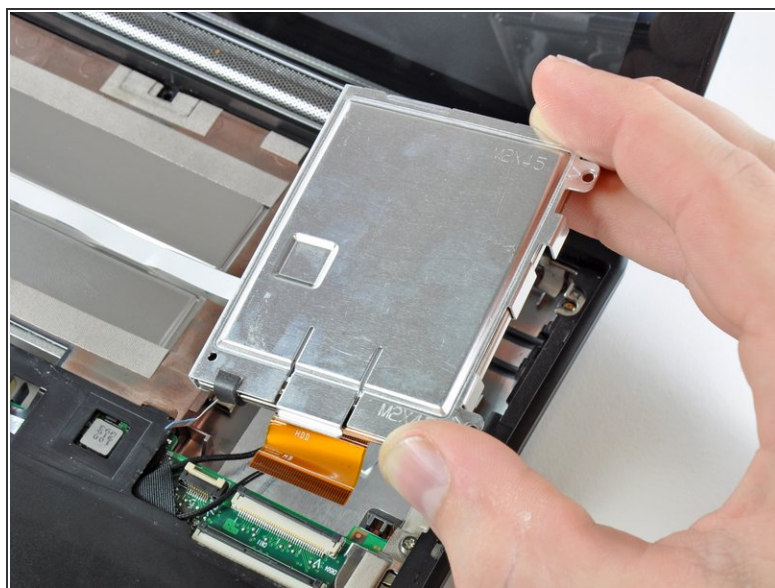


## Step 9



- Remove the two 4.5 mm Phillips screws securing the hard drive to the lower case.

## Step 10



- Lift the hard drive up and out of the lower case, being careful not to damage its cable in the process.



## Step 11 — Upper Case



- Using the sharp tip of a spudger, pry and remove the four plastic screw covers from the underside of the HP Mini 1000.
- ⓘ There are three different variations of the covers:
  - The two bottom covers are short in height and are notched to prevent incorrect insertion
  - The upper right cover is taller in height and is notched.
  - The upper left cover is taller in height and is not notched.

## Step 12



- Remove the four 7 mm Phillips screws that secure the upper case to the lower case.

## Step 13



- Flip the computer over and open the display.
- Remove the two 4.5 mm Phillips screws securing the upper case to the lower case.

## Step 14



- Wedge the flat end of a spudger in between the upper case and lower case near the bottom right corner of the display.
- Carefully pry and rock the spudger upwards to create a small gap between the upper case and lower case.
- Continue the previously described motion along the right edge of the upper case to release the clips securing the upper case to the lower case.

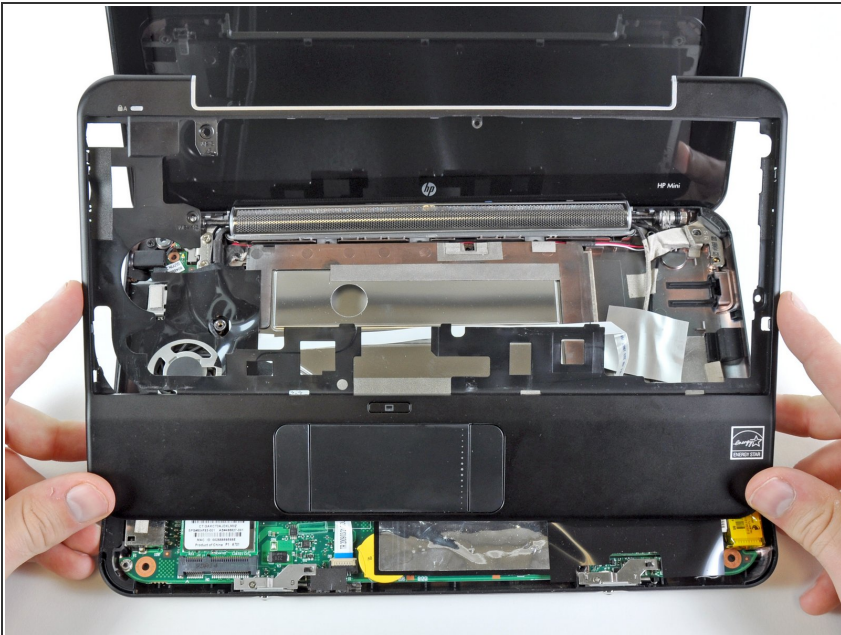


## Step 15




- Repeat the same procedure as mentioned in the previous step to release the clips along the left side of the upper case.

## Step 16



- Grasp the upper case and carefully lift it slightly upwards, freeing it from any remaining clips.

 The upper case is still attached via the TouchPad ribbon cable that is connected to the motherboard. **Do not remove it completely just yet.**

## Step 17



- ❗ Lay the upper case on top of the upper portion of the motherboard.
- Use your fingernail or the flat end of a spudger to flip up the retaining flap on the TouchPad cable ZIF socket.
- ⚠ Be sure you are prying up on the retaining flap, **not** the socket itself.
- Pull the TouchPad ribbon cable out of its socket.
- Remove the upper case from the HP Mini 1000.

## Step 18 — Wi-Fi Board



- ❗ If present, peel the sticker up off the top of the Wi-Fi board to reveal the Wi-Fi antenna connectors.



## Step 19



- Pry the Wi-Fi antenna connectors (2 total) up off the Wi-Fi board.
- ☞ During reassembly, remember to correctly connect the antenna cables to their respective terminals. The green labeled antenna is connected to the **"MAIN"** terminal and the white labeled antenna is connected to the **"AUX"** terminal.

## Step 20



- Remove the single 3 mm Phillips screw securing Wi-Fi board to the motherboard.

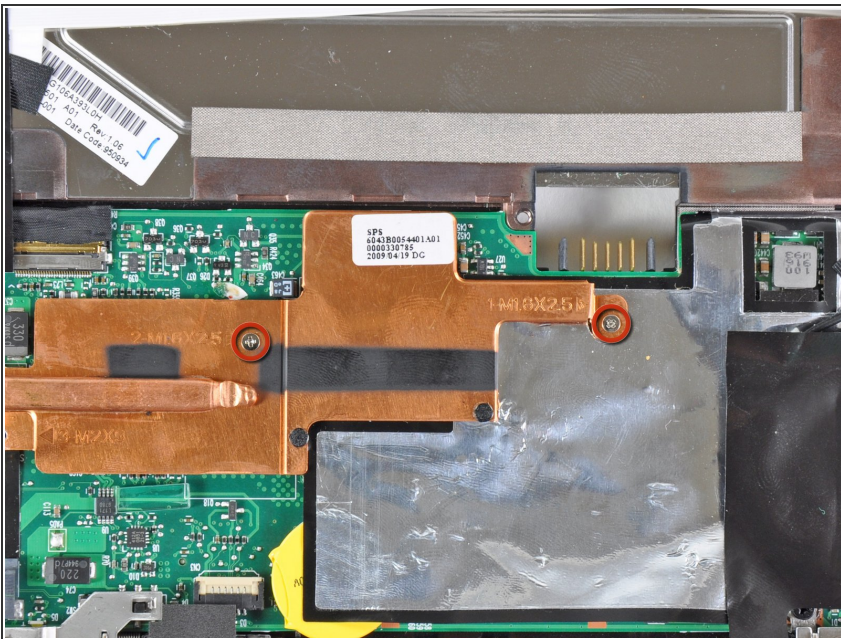


## Step 21



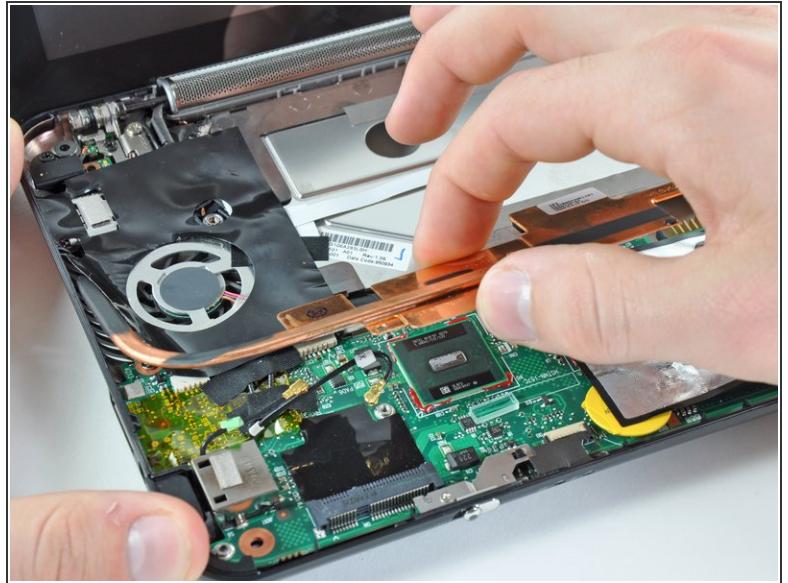
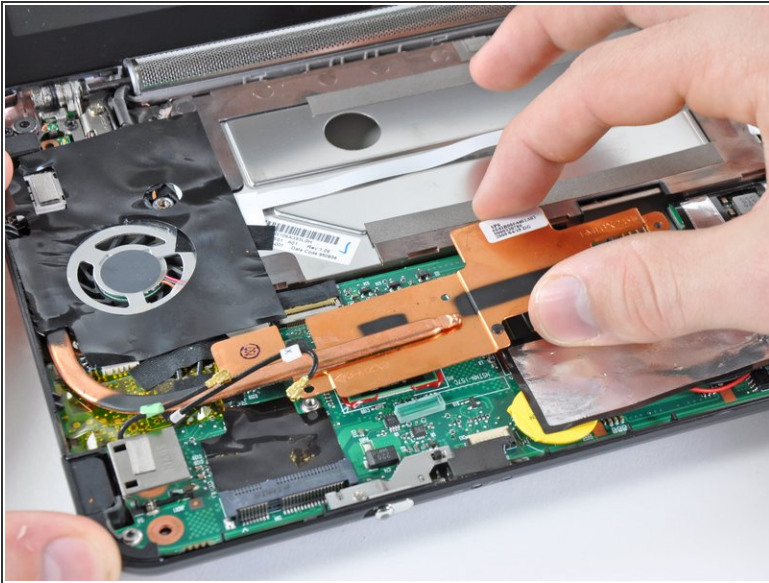
- ① Upon removing the Phillips screw that secures the Wi-Fi board to the motherboard, the Wi-Fi board should pop up from its top side nearest the antenna sockets.
- Grasp the Wi-Fi board and lift it straight away from its socket on the motherboard.

## Step 22 — Heat Sink



- Remove the two 2.5 mm Phillips screws securing the heat sink to the motherboard.

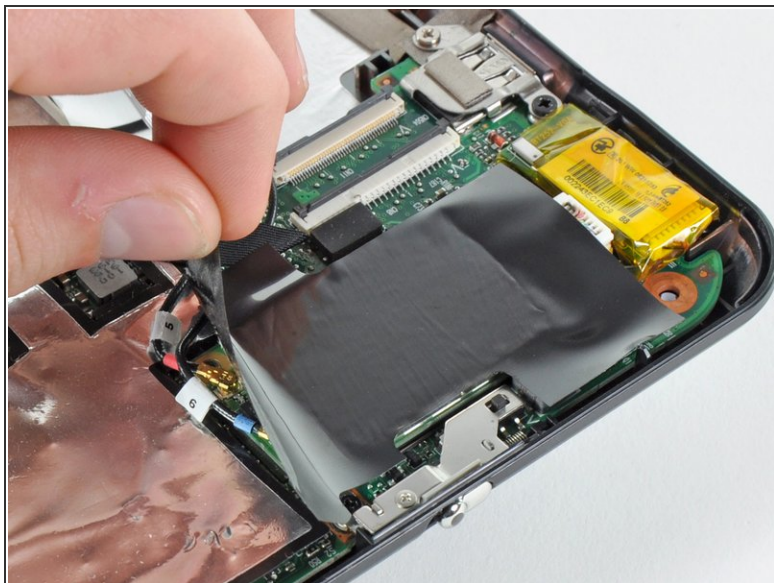
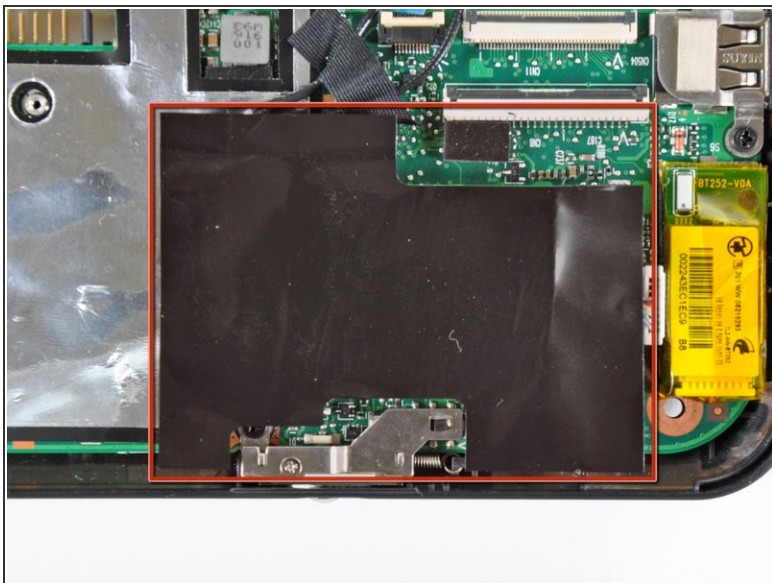
## Step 23



- Carefully lift the heat sink off the face of the motherboard and de-route the curved section from next to the fan.
  - Before reinstalling the heat sink, be sure to apply a new layer of thermal paste to the CPU. We have a [thermal paste guide](#) that makes it easy.
- ⚠ Only apply a new layer of thermal paste to the face of the CPU. The CPU is the large processor located closest to the fan.

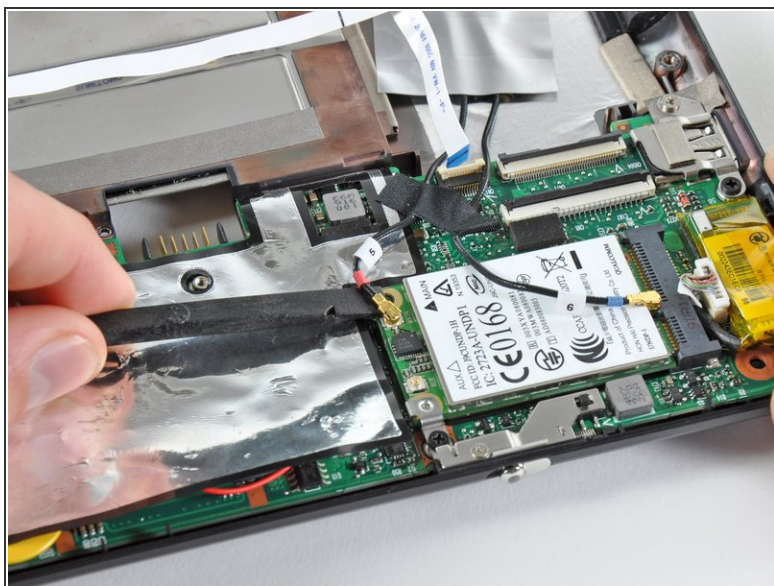
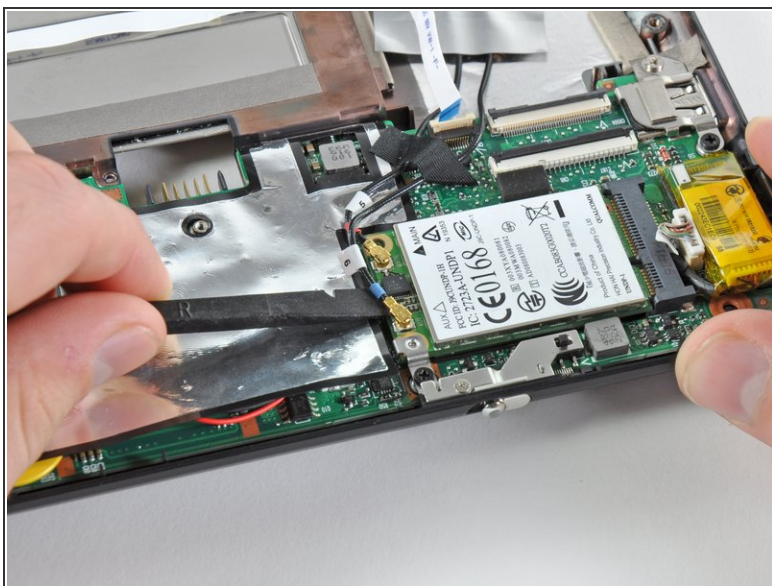


## Step 24 — Display Assembly



- i** If present, carefully remove the large piece of black adhesive film covering the Wi-Fi board.

## Step 25



- Use the flat end of a spudger to pry both antenna connectors up from their sockets on the Wi-Fi board.

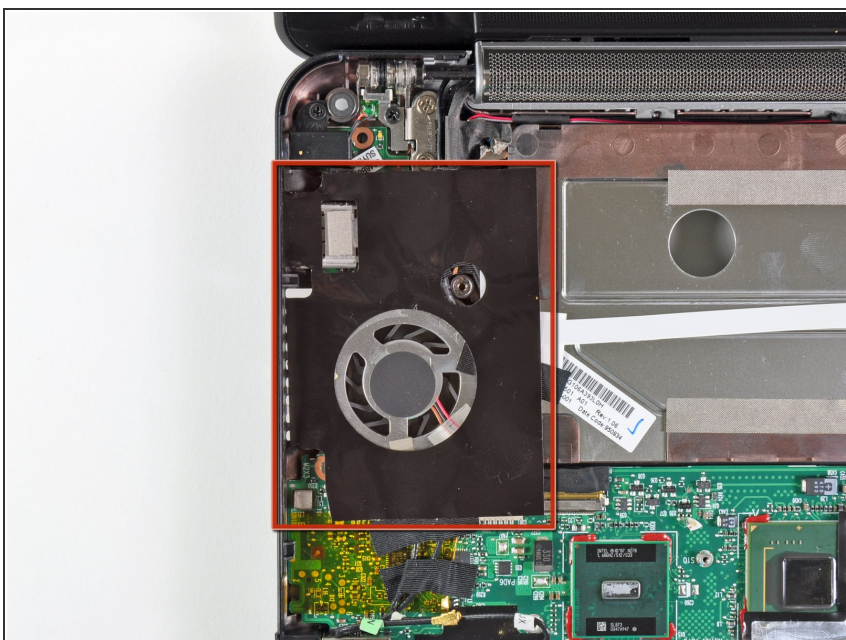


## Step 26



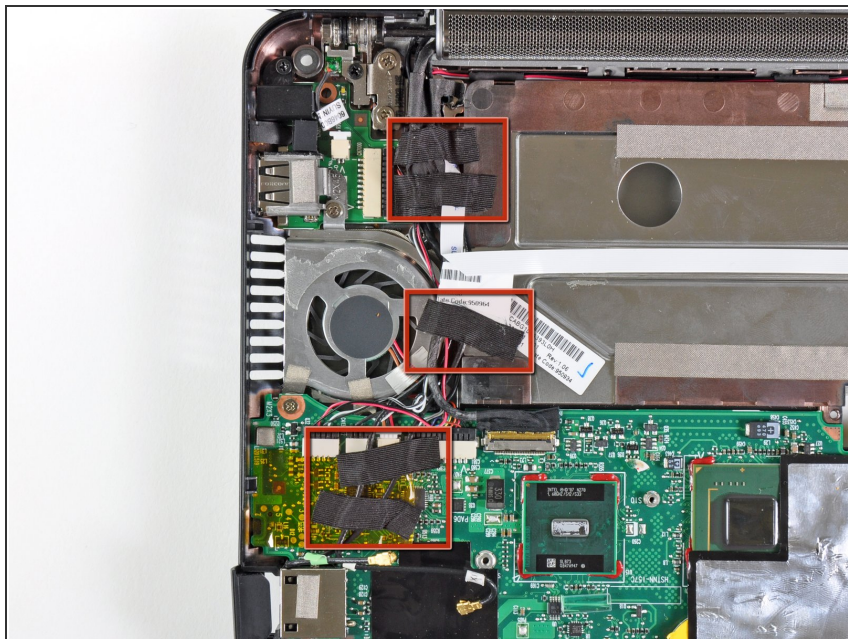
- i** If present, remove the pieces of tape securing the Wi-Fi antenna cables to the upper case.

## Step 27



- i** If present, carefully remove the large piece of black adhesive film from the area surrounding the fan.

## Step 28



- i** If present, remove the several pieces of black cloth tape securing the cables to the upper case near the fan.

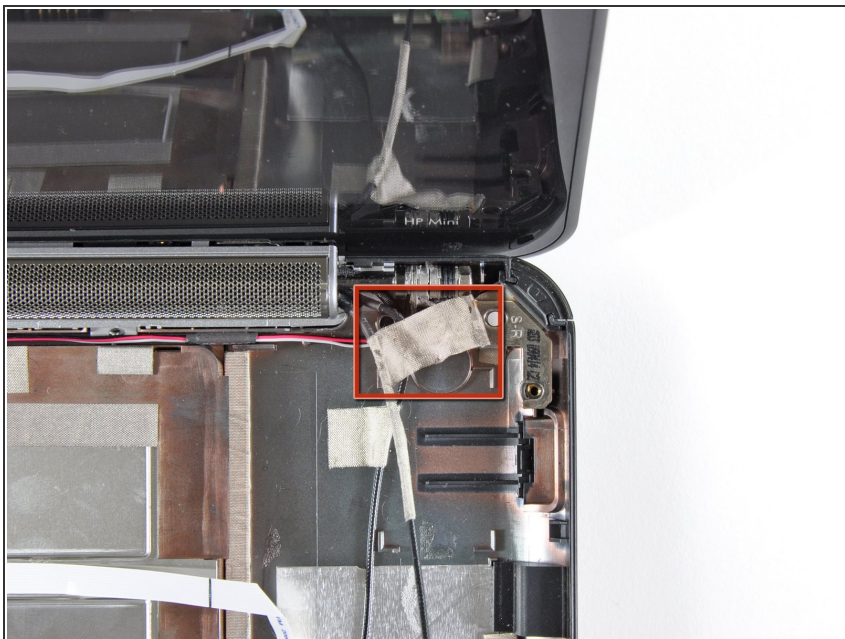


## Step 29



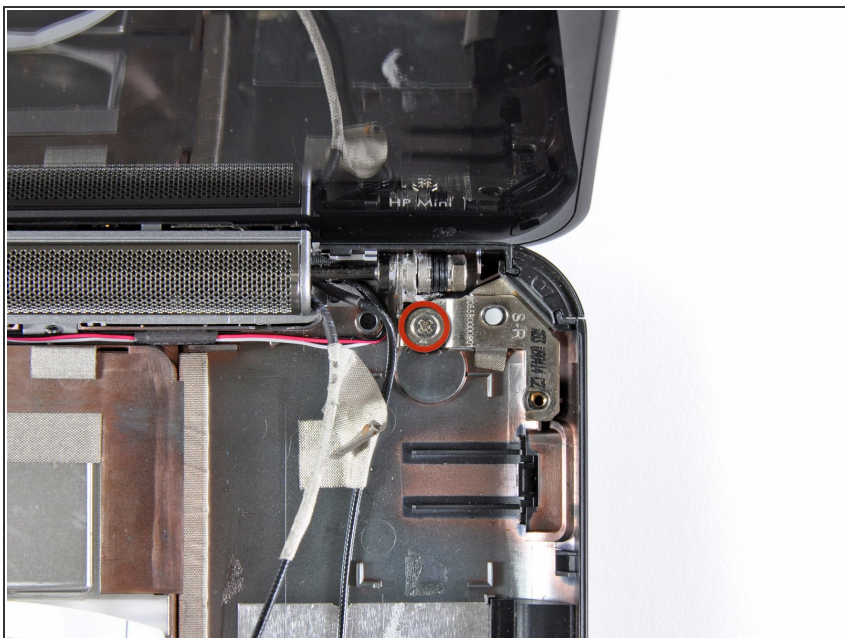
- Use the flat end of a spudger to disconnect each of the following connectors from their respective sockets:
  - Speaker cable
  - Microphone cable
  - Fan cable
  - Power cable
  - Display data cable
- ⚠ Push the connectors out of their sockets parallel to the face of the motherboard toward the display assembly. Do not lift up on the cables as you disconnect them, especially the display data cable, as their sockets may break off the motherboard.

## Step 30



- If present, peel back the strip of white cloth tape highlighted in red to reveal a display screw.

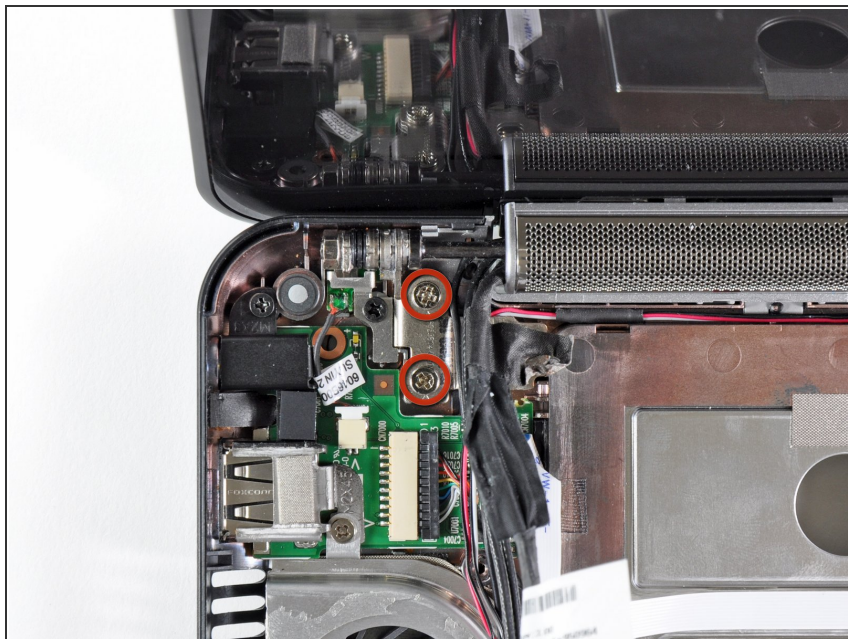
## Step 31



- Remove the single 5 mm Phillips screw securing the right display hinge to the lower case.



## Step 32



- Remove the two 5 mm Phillips screws securing the left display hinge to the lower case.

## Step 33




- Lift the display out of the lower case, minding any cables that may get caught.

## Step 34 — Speaker Grill



- Use the edge of a plastic opening tool to pry the left side of the speaker grill away from the display assembly.

 Be careful not to apply too much pressure to the display glass.

## Step 35



- Continue prying along the center of the speaker grill.



## Step 36



- Pry the right side of the speaker grill away from the display assembly.

## Step 37



- Remove the speaker grill.

To reassemble your device, follow these instructions in reverse order.