



# Dell Inspiron Duo Battery Replacement

Removing the battery is the easiest task on this laptop. It's just a few screws, and one cable.

Written By: Steven Luther



## INTRODUCTION

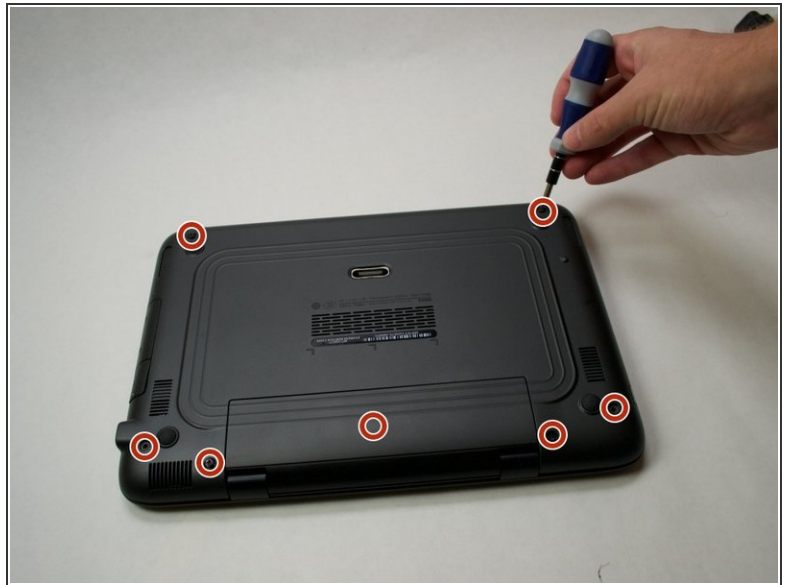
In this guide, we'll walk you through how to remove the original battery from the Dell Inspiron Duo laptop and replace it with a new one.



### TOOLS:

- [Phillips #0 Screwdriver](#) (1)
  - [iFixit Opening Tools](#) (1)
-

## Step 1 — Front Cover



**⚠ Working on your device while it is turned on may result in electric shock. Make sure to shut down and unplug your device before you begin.**

- Flip your device over so the bottom panel is facing up.
- To remove the old battery from the laptop, first unscrew the eight screws (size M2.5x8) from the bottom with a Phillips #0 screwdriver, this will allow the removal of the keyboard and front panel.

## Step 2



- Flip the device over again and open the laptop so that you have access to the keyboard. There are hooks on the bottom of the keyboard, but gently pulling the keyboard towards the monitor will allow it to pull out easily. Be sure to unclamp the ribbon cable. Remove the three screws under the keyboard.
- Remove the three plastic Keyboard and trackpad connectors (these are labeled with a blue circle on the second photograph).

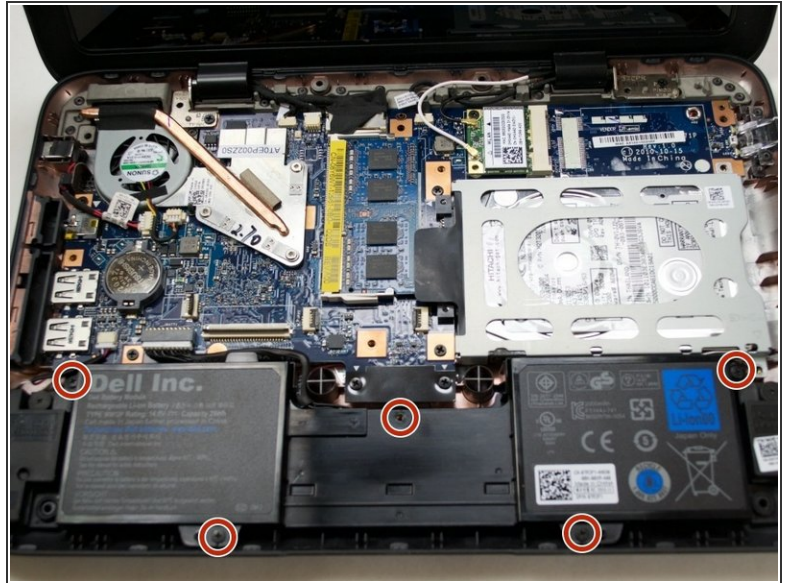


## Step 3



- Next, remove the top cover from the device using the plastic opening tools. It snaps in on the sides, so don't worry if you hear it unsnapping; it's not breaking.

## Step 4 — Battery



- Remove the cover, and locate the battery. The battery can be found in the lower portion of the device. It will have a blue Li-ion Recycling symbol on the right half, and "Dell Inc. Dell Battery Module" on the left side.
- Remove the two screws from the bottom center of the battery, the two screws from the top outside corners, and the single screw in the top-center.

## Step 5



- Lastly, remove the white power connector that attaches the battery to the motherboard ( to make this easier to see, the power connector is outlined in red in the photograph). Now remove the battery from the device and place to the side.

To reassemble your device, follow these instructions in reverse order.