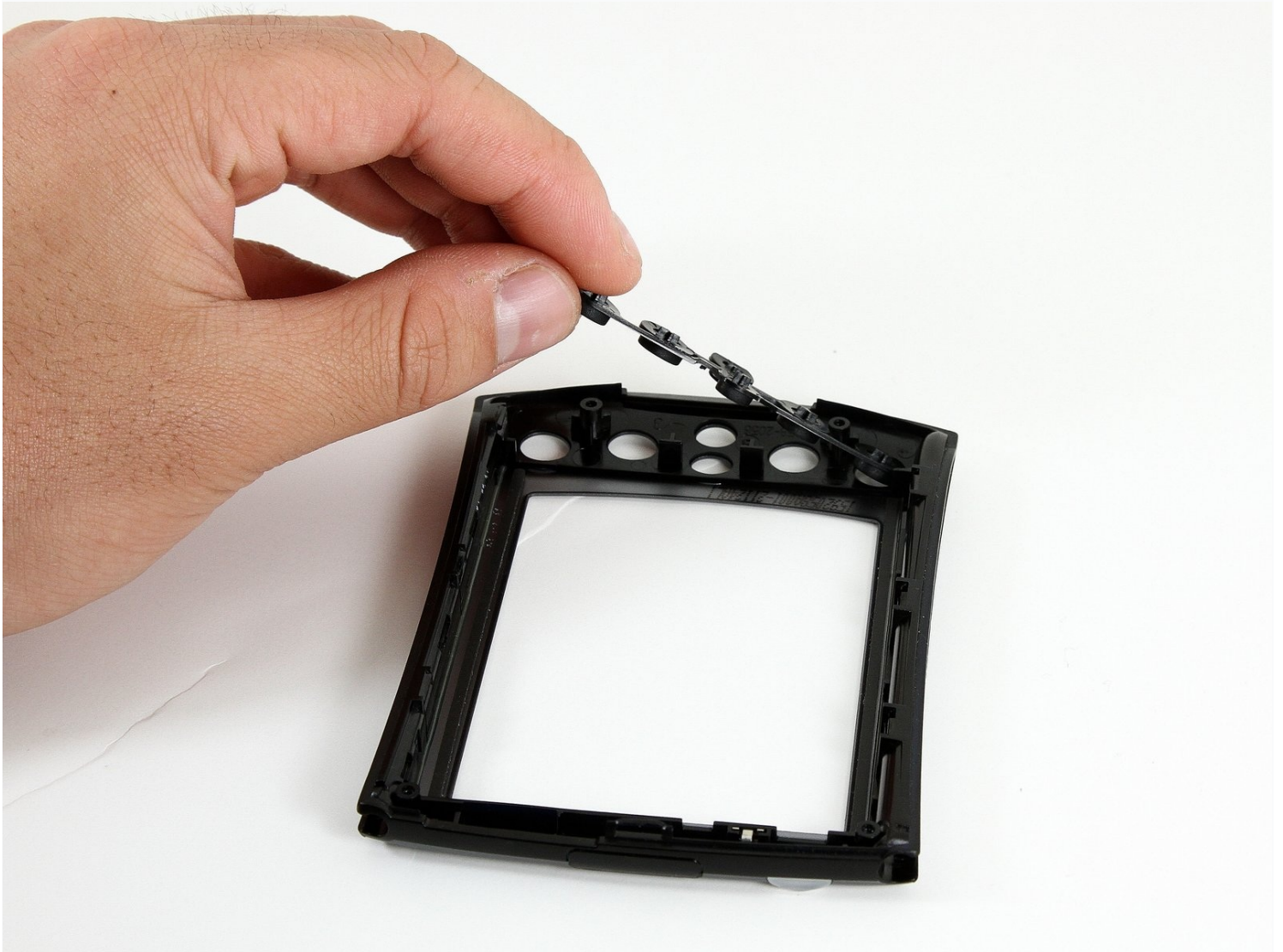




# Palm m500 button cover replacement

Before you begin disassembly, be sure to have...

Written By: Miles Johnson



# INTRODUCTION

Before you begin disassembly, be sure to have the necessary tools. You will need a Torx size T6 screwdriver, tweezers, and the device opening tool. You will be removing the stylus, the back panel, the battery, the motherboard, and the LCD screen in order to access the button panel.

---

## TOOLS:

[T6 Torx Screwdriver](#) (1)

[Tweezers](#) (1)

[iFixit Opening Tool](#) (1)

---

## Step 1 — Back Panel



- Remove the stylus from the side of the PDA by sliding it upwards.

## Step 2



- Remove the 4 screws from the corners of the back panel of the device using a size T6 Torx screwdriver.
- ① Place screws in a plastic bag or another safe place.

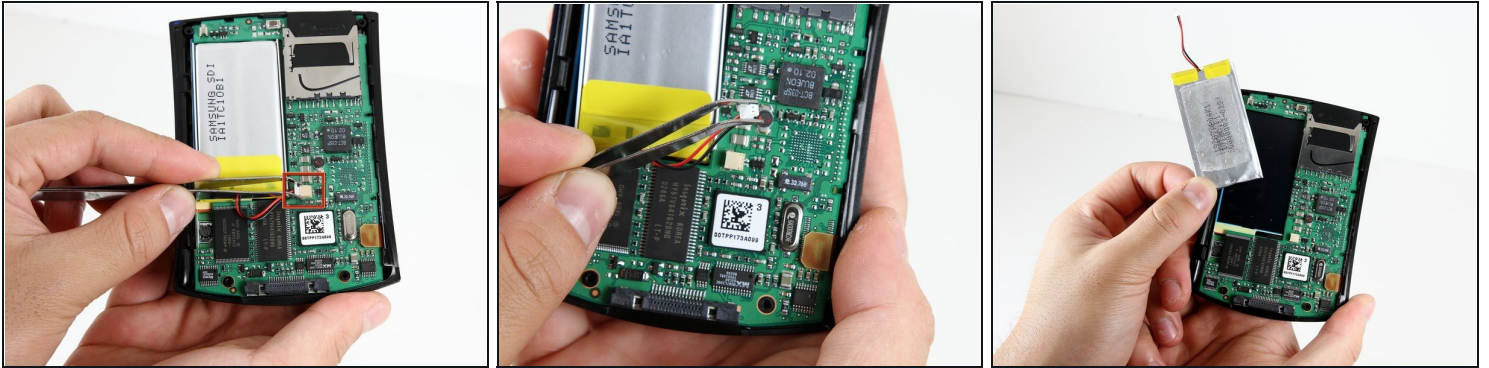
## Step 3



- Insert the edge of the plastic opening tool between the back panel and the black stylus holder.
- Carefully and forcefully pry the panels apart.

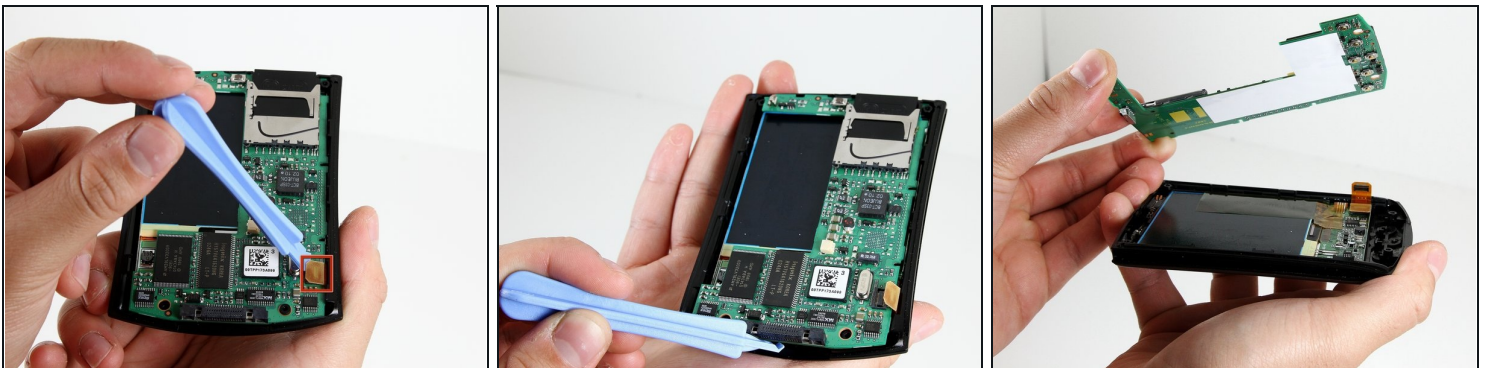


## Step 4 — Battery



- Use [tweezers](#) to unplug the battery cable from the motherboard socket.
- Gently remove the battery from the motherboard using your thumb and forefinger to pull upwards.
- ⓘ The battery may be difficult to remove because of light adhesive on the back. It may require some force to pry the battery away from the motherboard with your fingers.

## Step 5 — Motherboard



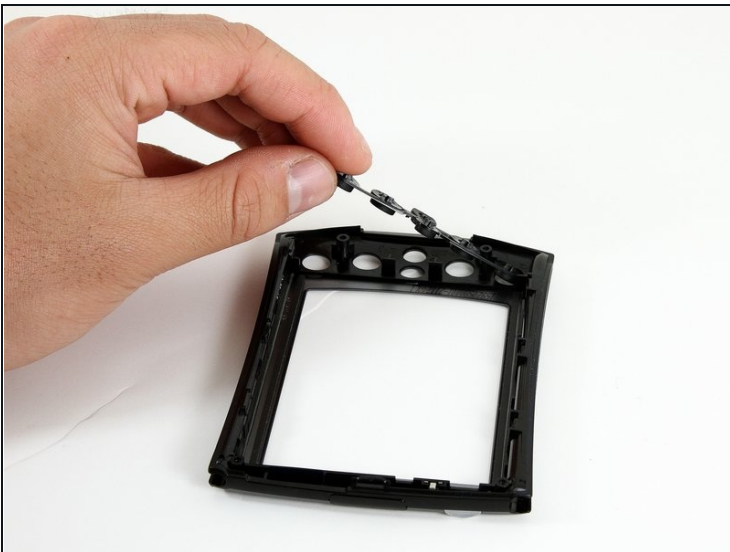
- Use the plastic opening tool to pry the orange clamp away from the motherboard.
- Use the plastic opening tool at the bottom of the device to pry the motherboard away from the front plate.
- Gently and forcefully lift the motherboard away from the front plate by using your thumb and forefinger.

## Step 6 — LCD Screen



- Pull the LCD screen up from the bottom of the device using your forefinger.
- The LCD screen will easily come away from the front panel.

## Step 7 — button covers



- Gently remove the buttons from the front panel with your thumb and forefinger.
- The buttons are not secured and should easily fall out.

---

To reassemble your device, follow these instructions in reverse order.

