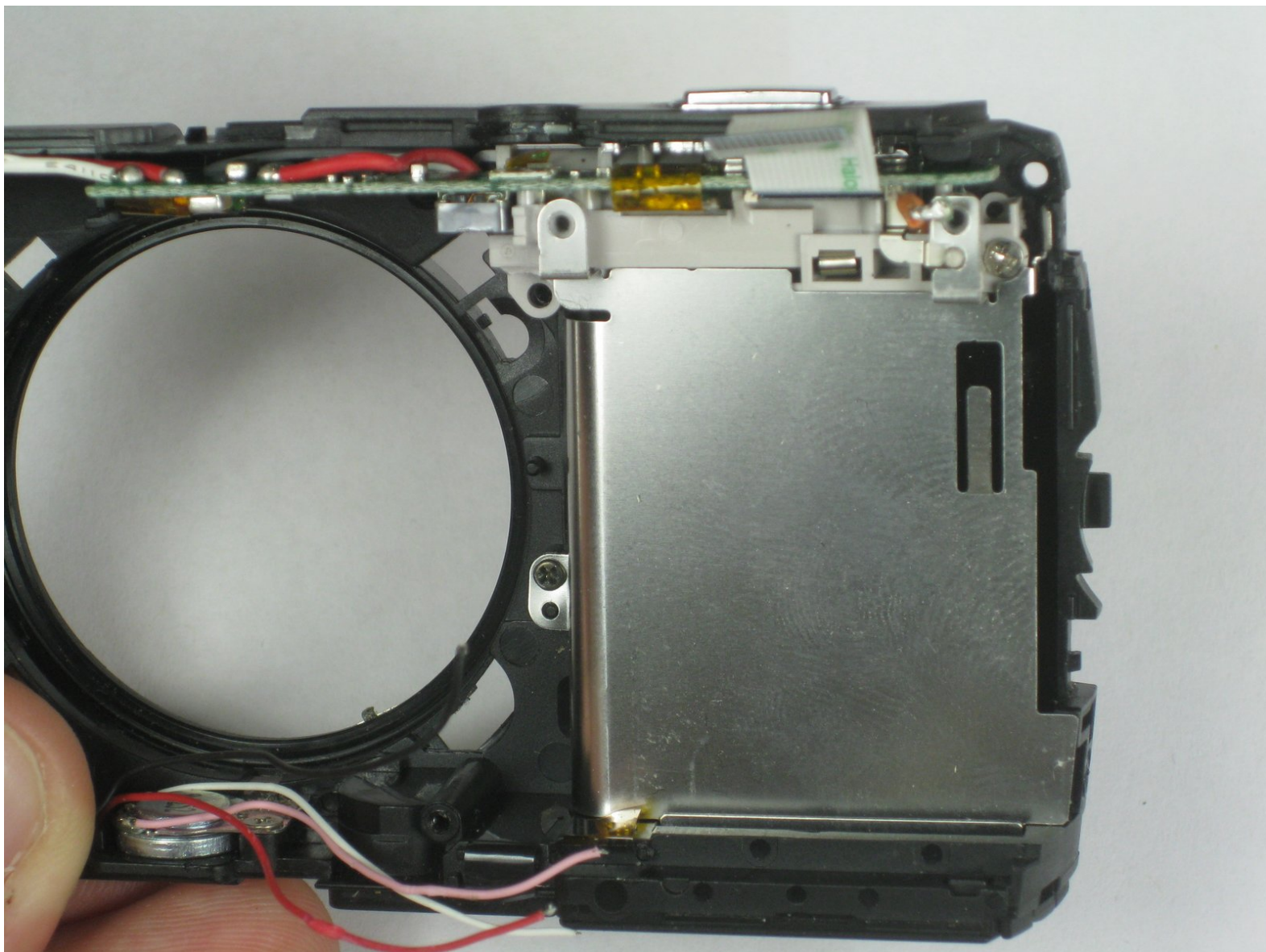




Olympus Stylus 1010 Flash Replacement

How to replace Olympus Stylus 1010 flash.

Written By: Curtis Reedy



INTRODUCTION

This guide will help you to replace the flash device on your Olympus Stylus 1010.



TOOLS:

- [Phillips #00 Screwdriver](#) (1)
-

Step 1 — Disassembling Olympus Stylus 1010 Case



- Remove the five Phillips #00 bottom and right side panel screws.

Step 2



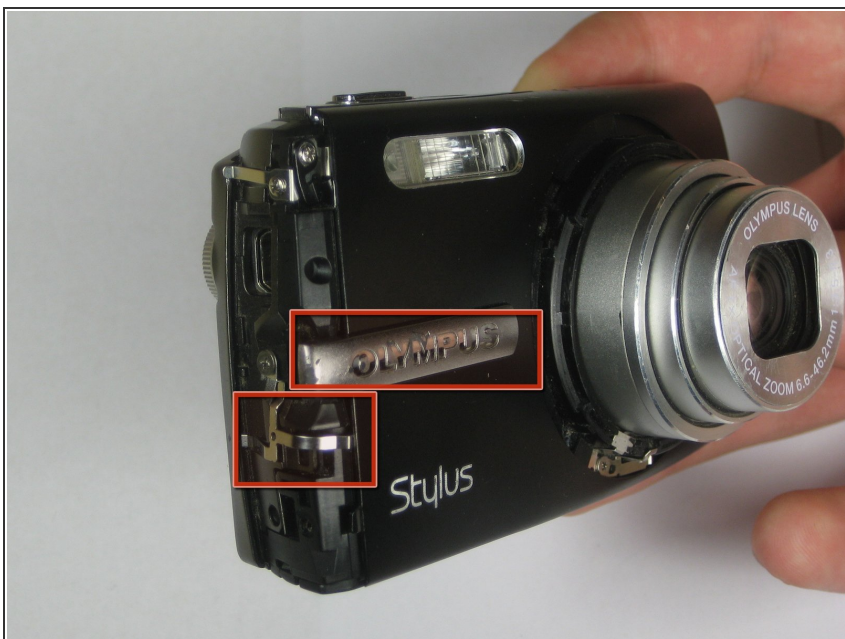
- Remove the right side panel by pulling off the large silver piece.

Step 3



- Remove the remaining three Phillips #00 side and front panel screws.

Step 4



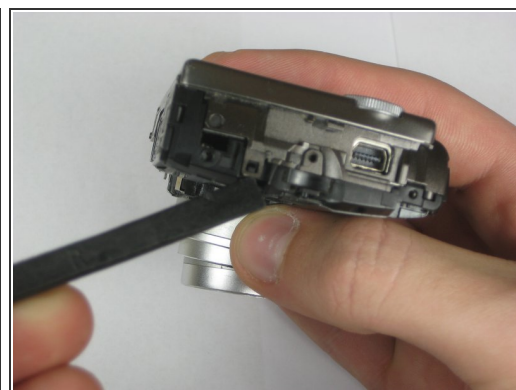
- Using your thumb and forefinger, pull off the silver name plate and silver "T-shape" piece.

Step 5



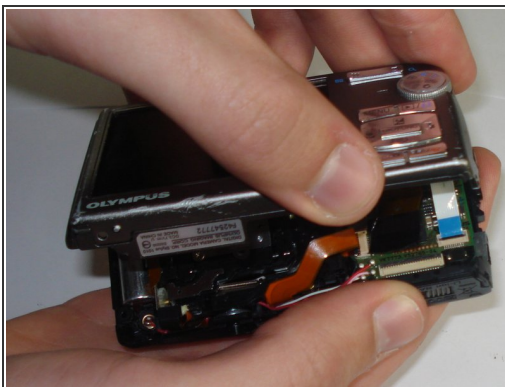
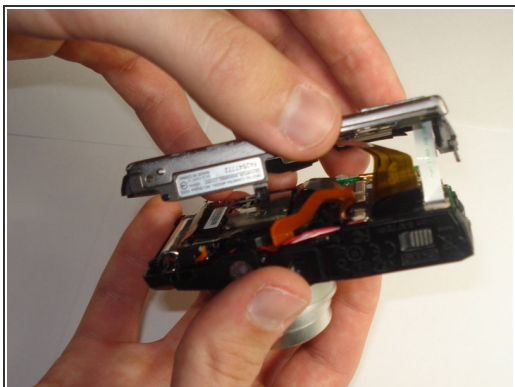
- Remove the black front panel by sliding it towards the lens and then pulling it up off of the camera.

Step 6



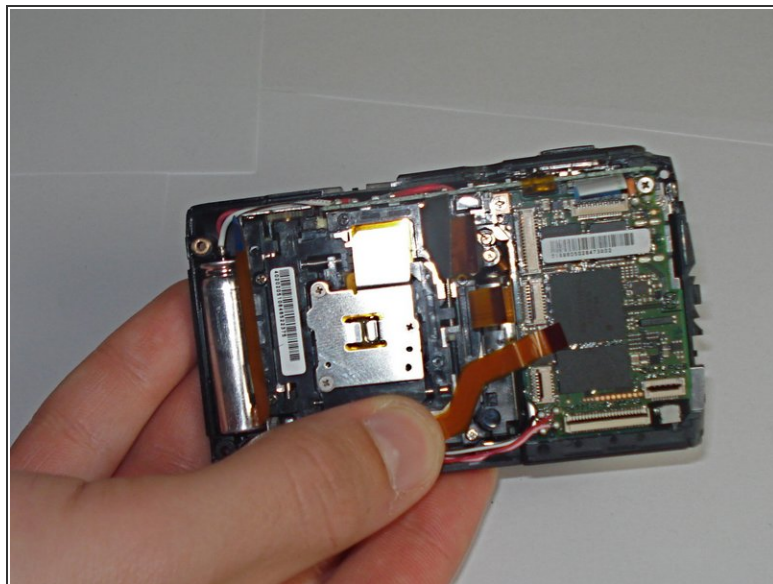
- Remove the three Phillips #00 screws from the front of the camera.
- Using a spudger, lift the two tabs to separate the case—one tab on top and one tab on the right side.

Step 7



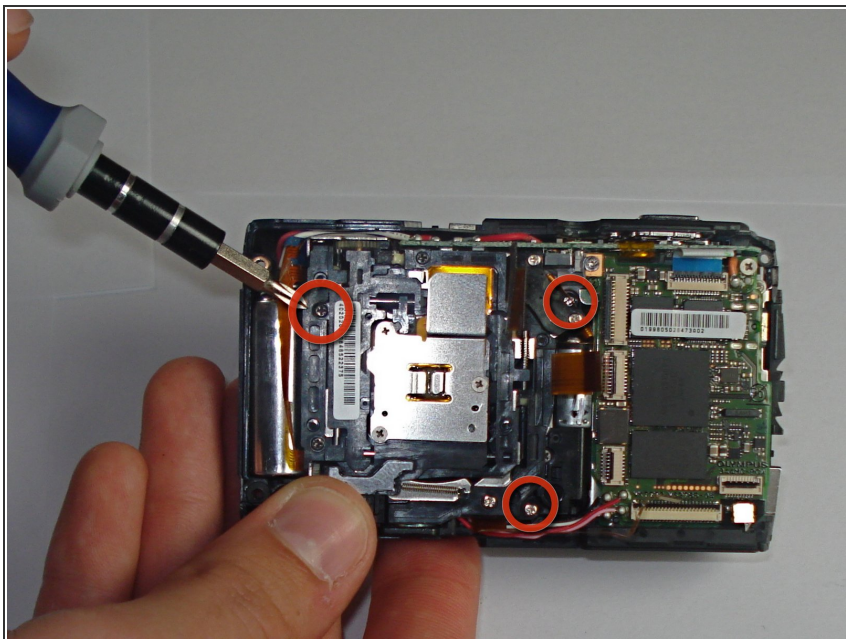
- Using a plastic spudger, lift up the black clips.
- Still using the plastic spudger, detach the gold connector strip and white connector strip.
- Using both hands, pull the camera apart into two pieces.

Step 8 — Lens



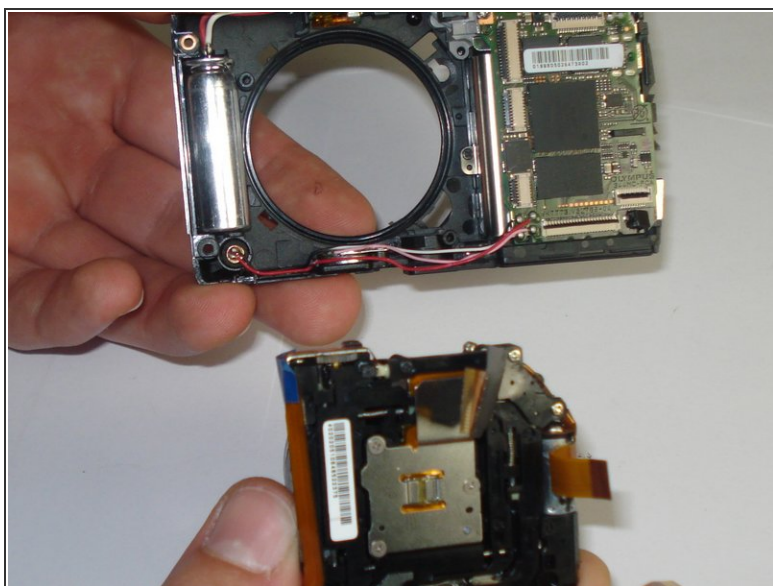
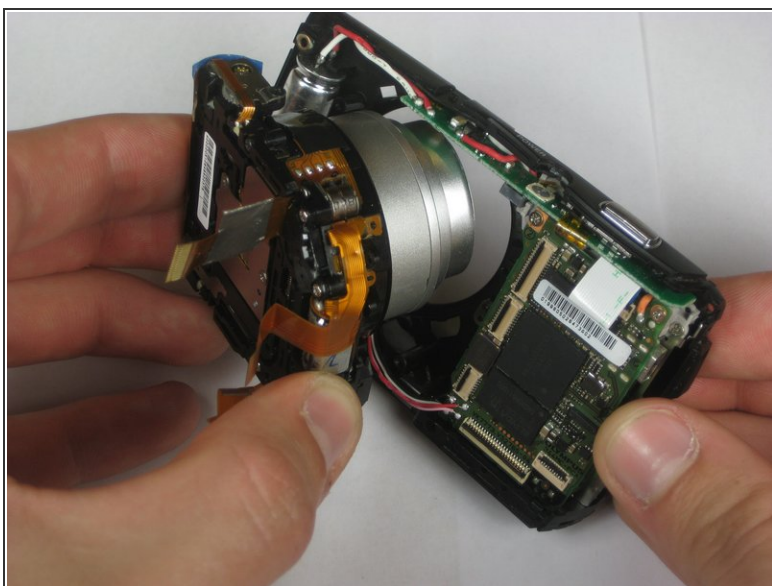
- Using a plastic spudger, lift up the black clips.
- Still using the spudger, detach the three gold wire tape connectors from the inside of the camera.

Step 9



- Remove the three screws from the inside of the camera using a #00 screwdriver.

Step 10



- Using your thumb and forefinger, pull the lens piece straight out from the body of the camera.

Step 11 — Motherboard



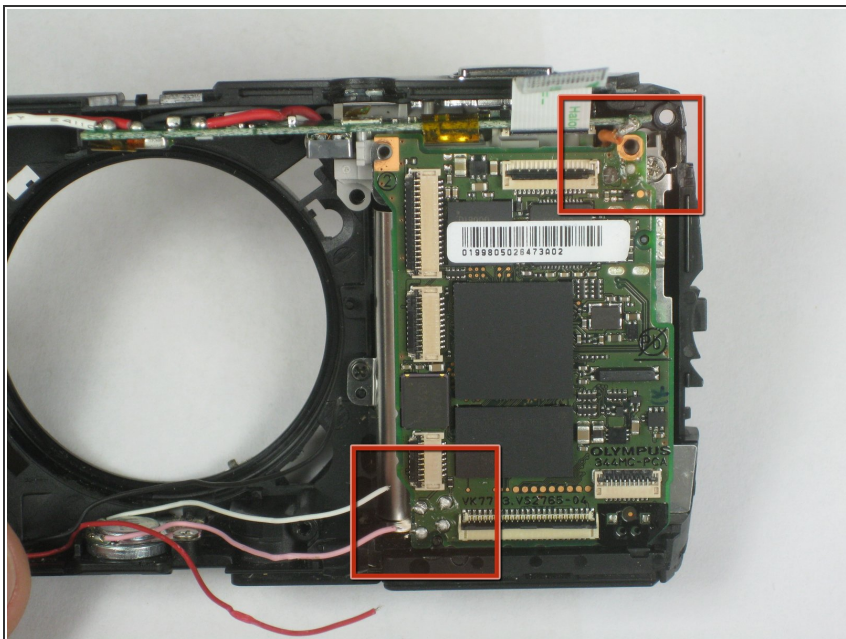
- Remove the two Phillips #00 screws on the right side of the camera.

Step 12



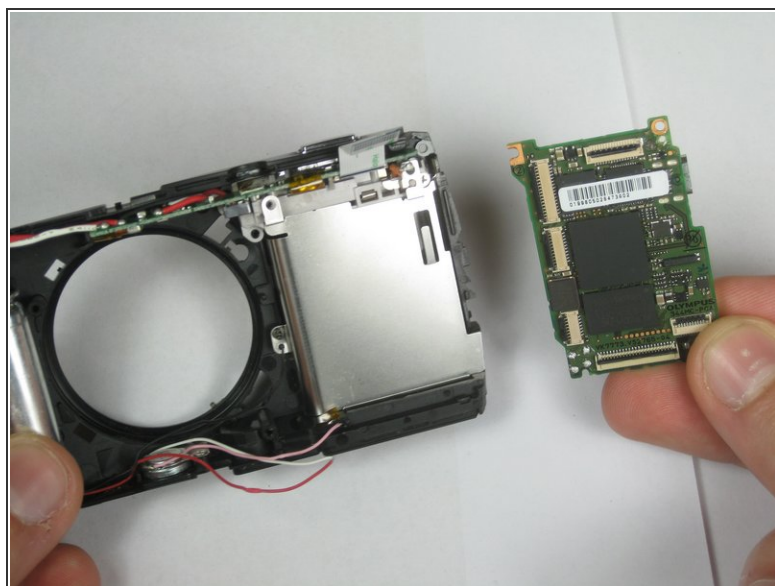
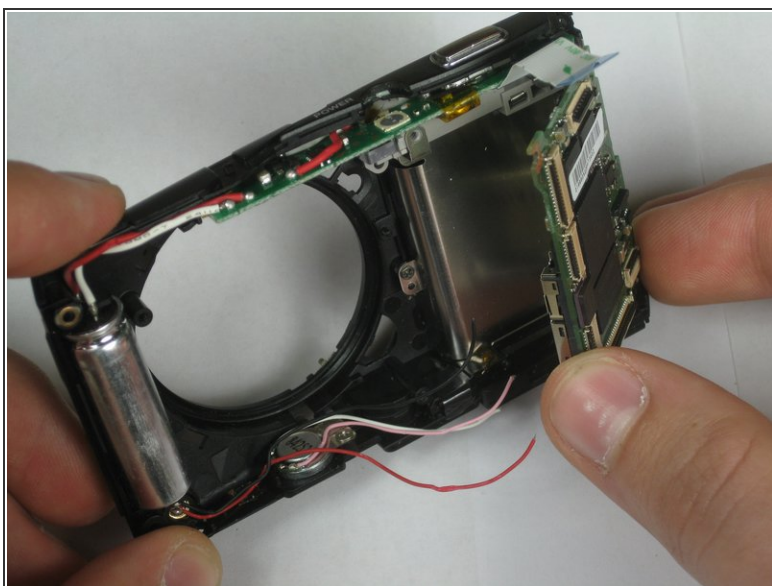
- Using a plastic spudger, lift up the black clips.
- Still using the spudger, detach the gold wire tape connectors from the motherboard.

Step 13



- Desolder the upper right and lower left wires to remove the motherboard.

Step 14



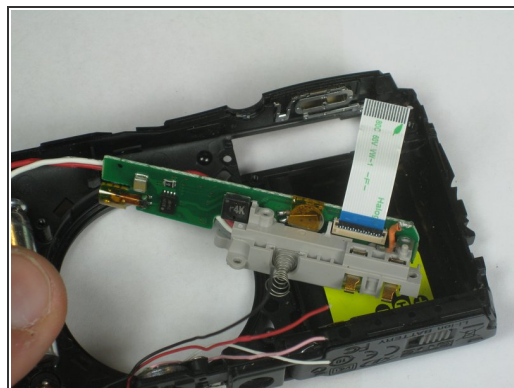
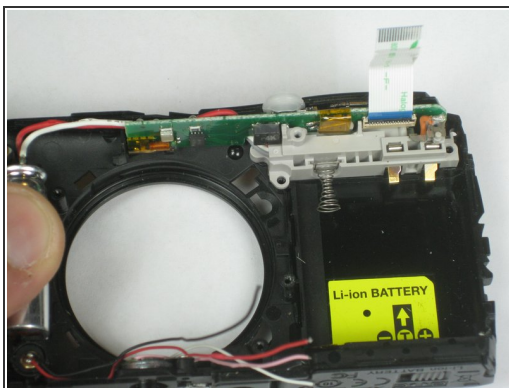
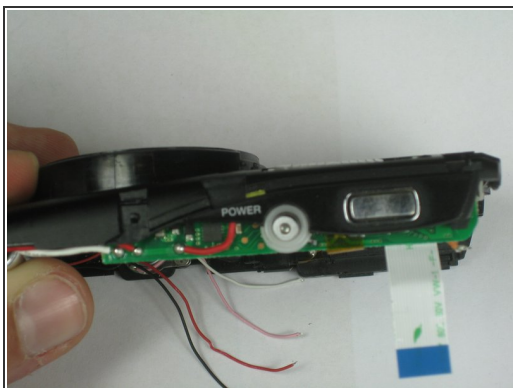
- In order to remove the motherboard, grab each side of it and pull up using your thumb and forefinger.

Step 15 — Flash



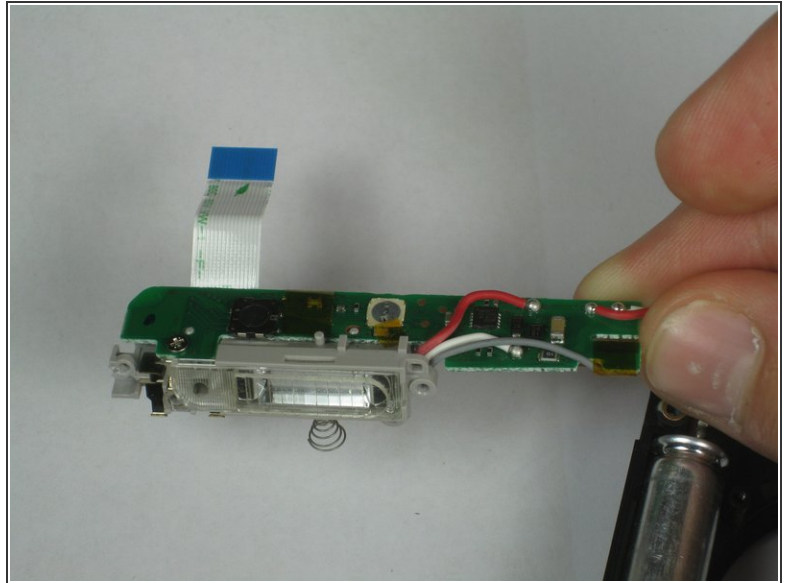
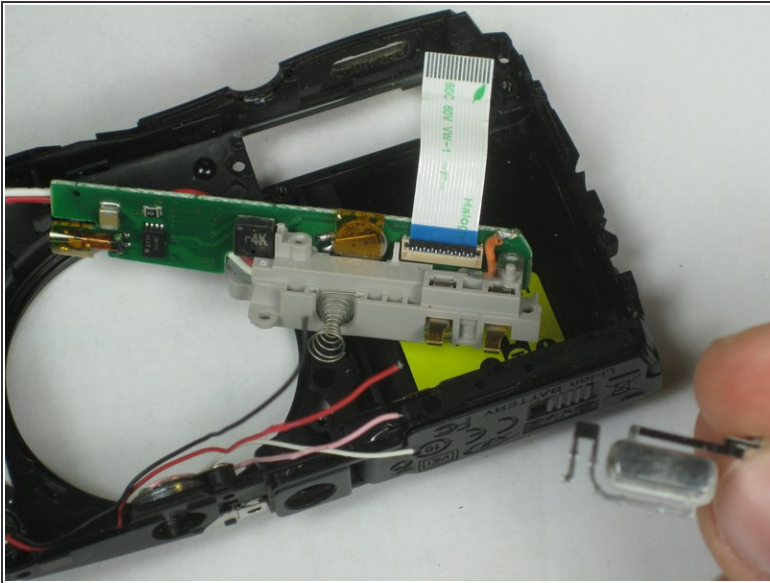
- Remove the two remaining Phillips #00 screws.
- Lift the metal piece straight up to remove it.

Step 16



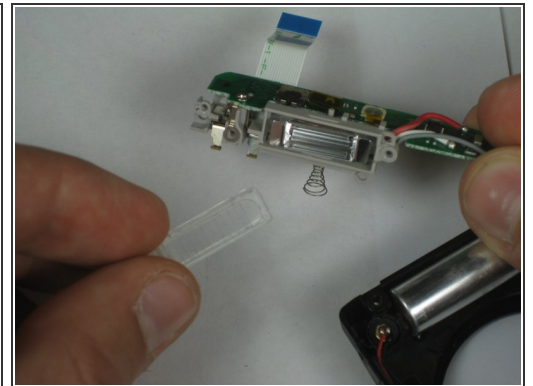
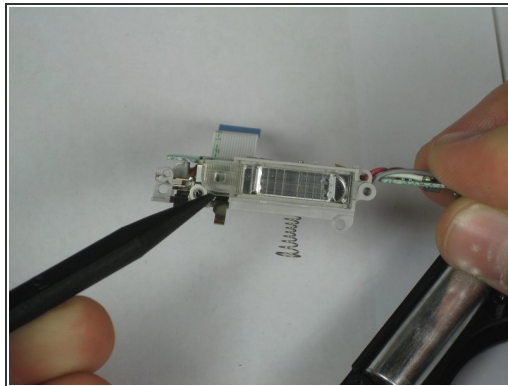
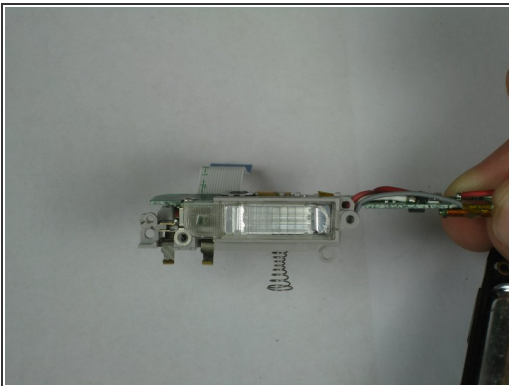
- Pull gently on the white tab to remove the small motherboard with the flash device on it.

Step 17



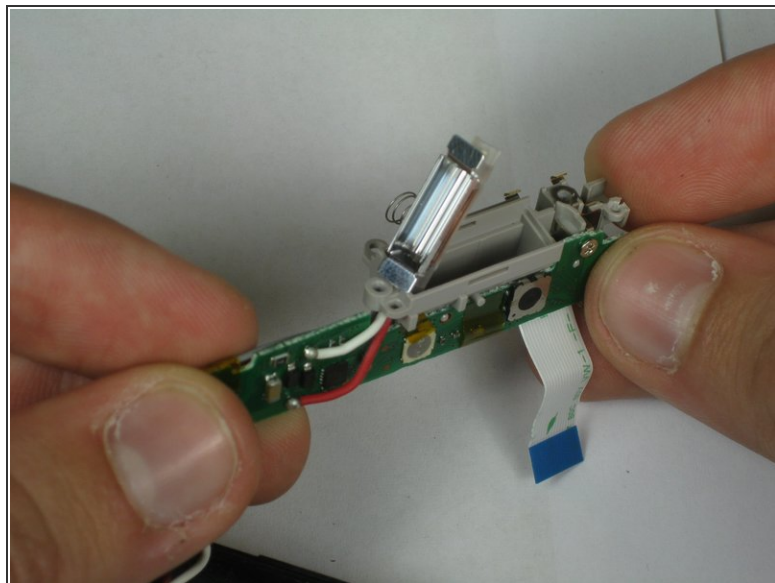
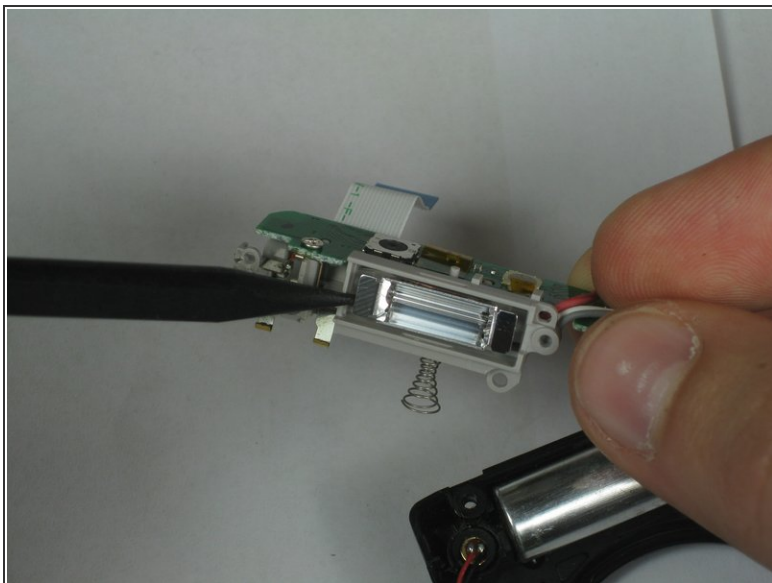
- Pull out the silver button using your thumb and forefinger.
- Remove the small motherboard from the camera casing.

Step 18



- Remove the plastic flash cover using a spudger.

Step 19



- Remove the flash bulb using a plastic spudger.

To reassemble your device, follow these instructions in reverse order.