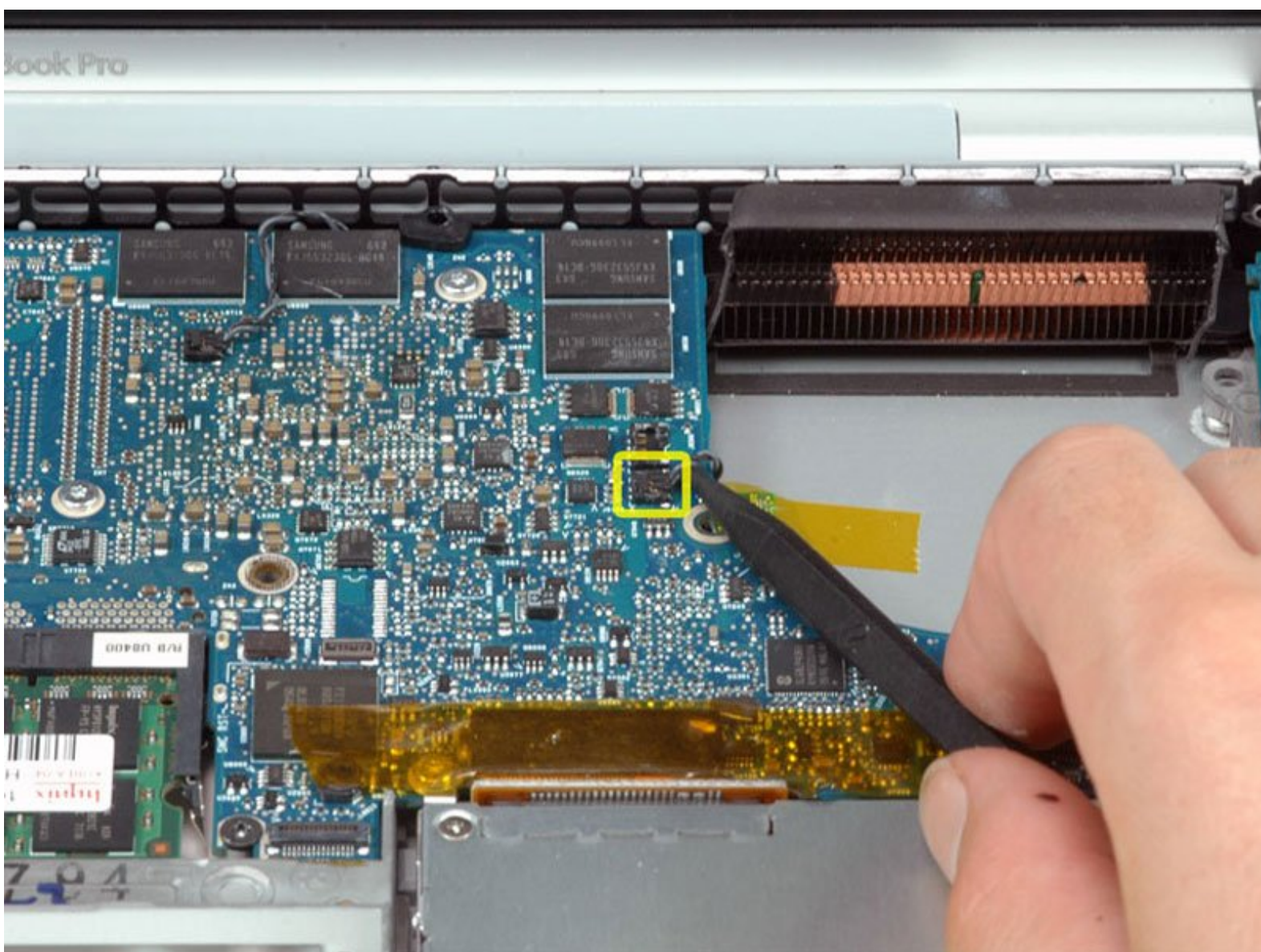




# MacBook Pro 15" Core 2 Duo Model A1211

## Right Thermal Sensor Replacement

Written By: iRobot



# INTRODUCTION

This detects the internal temperature of your machine for heat management.



## TOOLS:

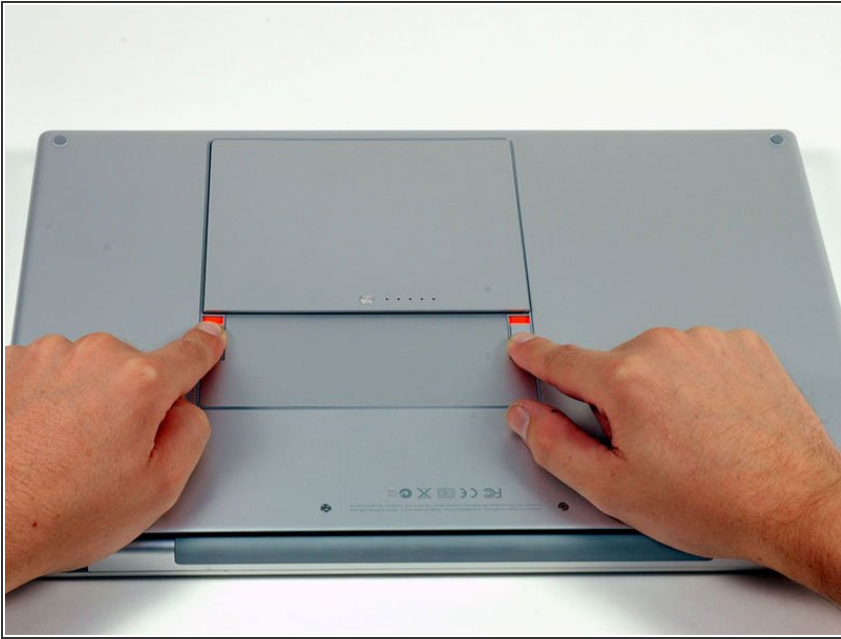
- [Phillips #00 Screwdriver](#) (1)
- [Spudger](#) (1)
- [T6 Torx Screwdriver](#) (1)



## PARTS:

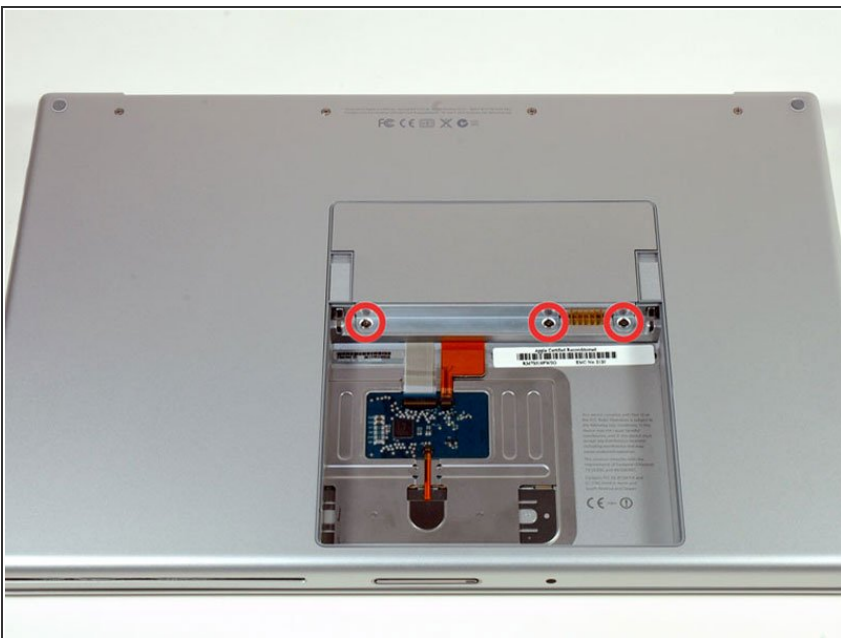
- [MacBook Pro 15" \(Model A1211\) Right Thermal Sensor](#) (1)

## Step 1 — Battery



- Use your fingers to push both battery release tabs away from the battery, and lift the battery out of the computer.

## Step 2 — RAM Shield



- Remove the three identical Phillips screws from the memory door.

## Step 3



- Lift the memory door up enough to get a grip on it, and slide it toward you, pulling it away from the casing.

## Step 4 — Upper Case



- Remove the two 2.8 mm Phillips screws in the battery compartment near the latch.



## Step 5



- Remove the following 6 screws:
  - Two 10 mm T6 Torx screws on either side of the RAM slot.
  - Four 14.5 mm Phillips screws along the hinge.

## Step 6



- Remove the four 3.2 mm Phillips screws on the port side of the computer.

## Step 7



- Rotate the computer 90 degrees and remove the two 3.2 mm Phillips screws from the rear of the computer.

## Step 8



- Rotate the computer 90 degrees again and remove the four 3.2 mm Phillips screws from the side of the computer.

## Step 9



- ⓘ Do not yank the upper case off quickly. The case is attached to the logic board via a ribbon cable.
- Lift up at the rear of the case and work your fingers along the sides, freeing the case as you go. Once you have freed the sides, you may need to rock the case up and down to free the front of the upper case (there are some hidden plastic clips that need to be clicked off).

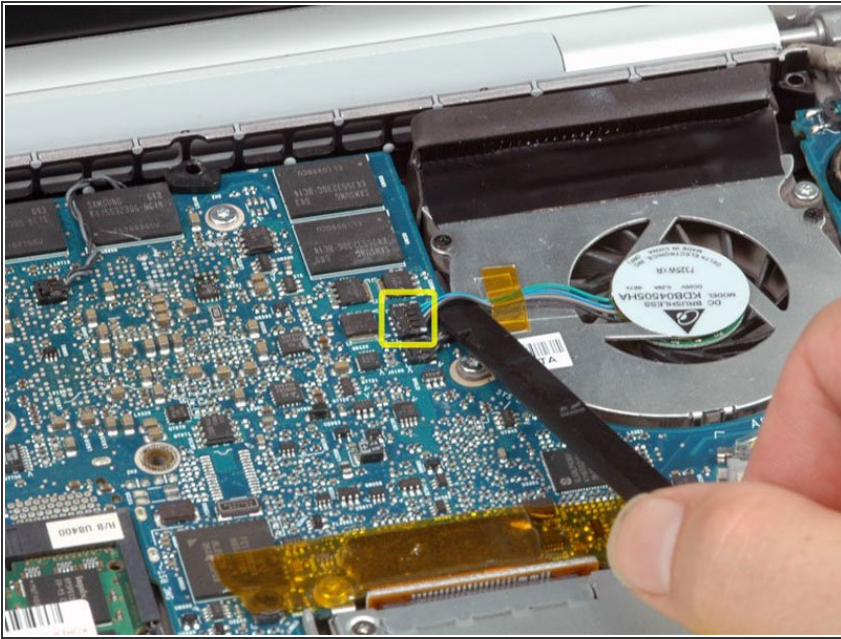
## Step 10



- Disconnect the trackpad and keyboard ribbon cable from the logic board, removing tape as necessary.
- Remove the upper case.



## Step 11 — Right Fan



- Disconnect the right fan cable from the logic board by placing a spudger beneath the cable and lifting up.

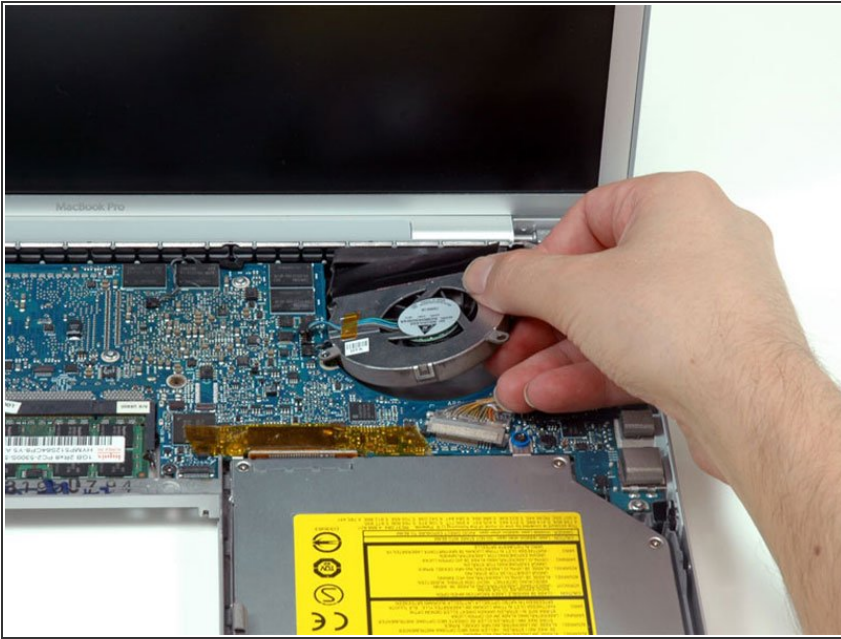
## Step 12



- Remove the three silver T6 Torx screws securing the right fan to the logic board and lower case.

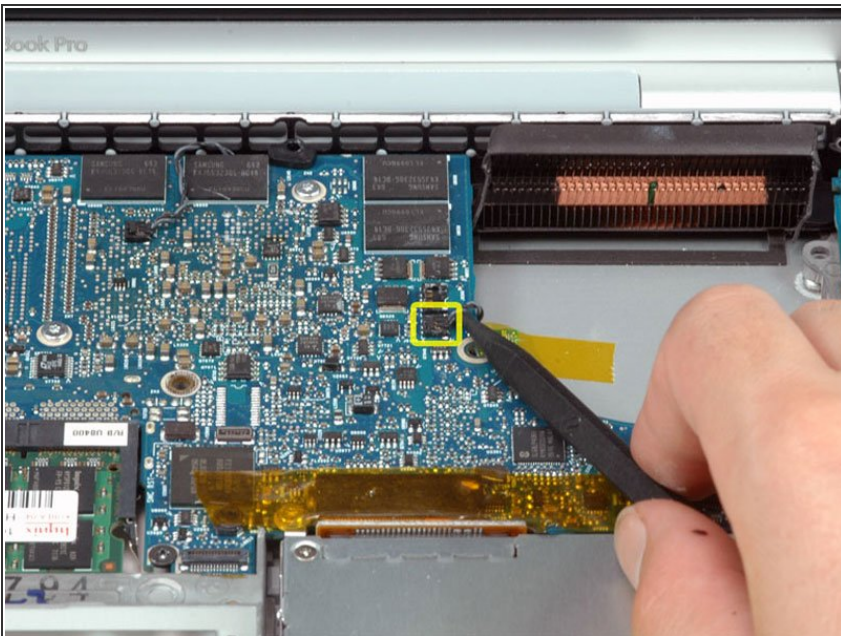


## Step 13



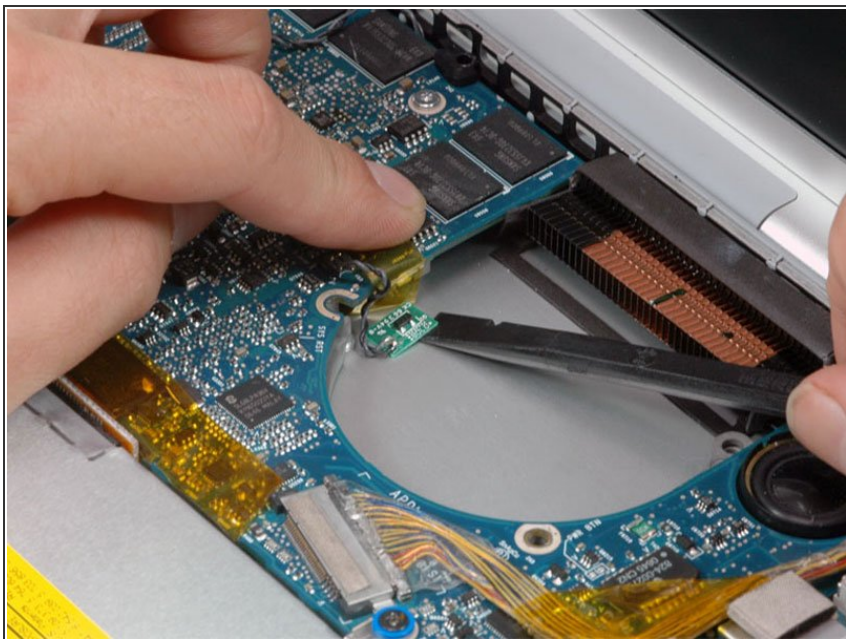
- Lift the right fan up and carefully peel up the tape securing the fan to the heat sink as you go.

## Step 14 — Right Thermal Sensor



- Disconnect the right thermal sensor cable from the logic board by placing a spudger beneath the cable and lifting up.

## Step 15



- Peel up the orange Kapton tape covering the right thermal sensor.
- Use a spudger to pry the right thermal sensor off the lower case.

To reassemble your device, follow these instructions in reverse order.