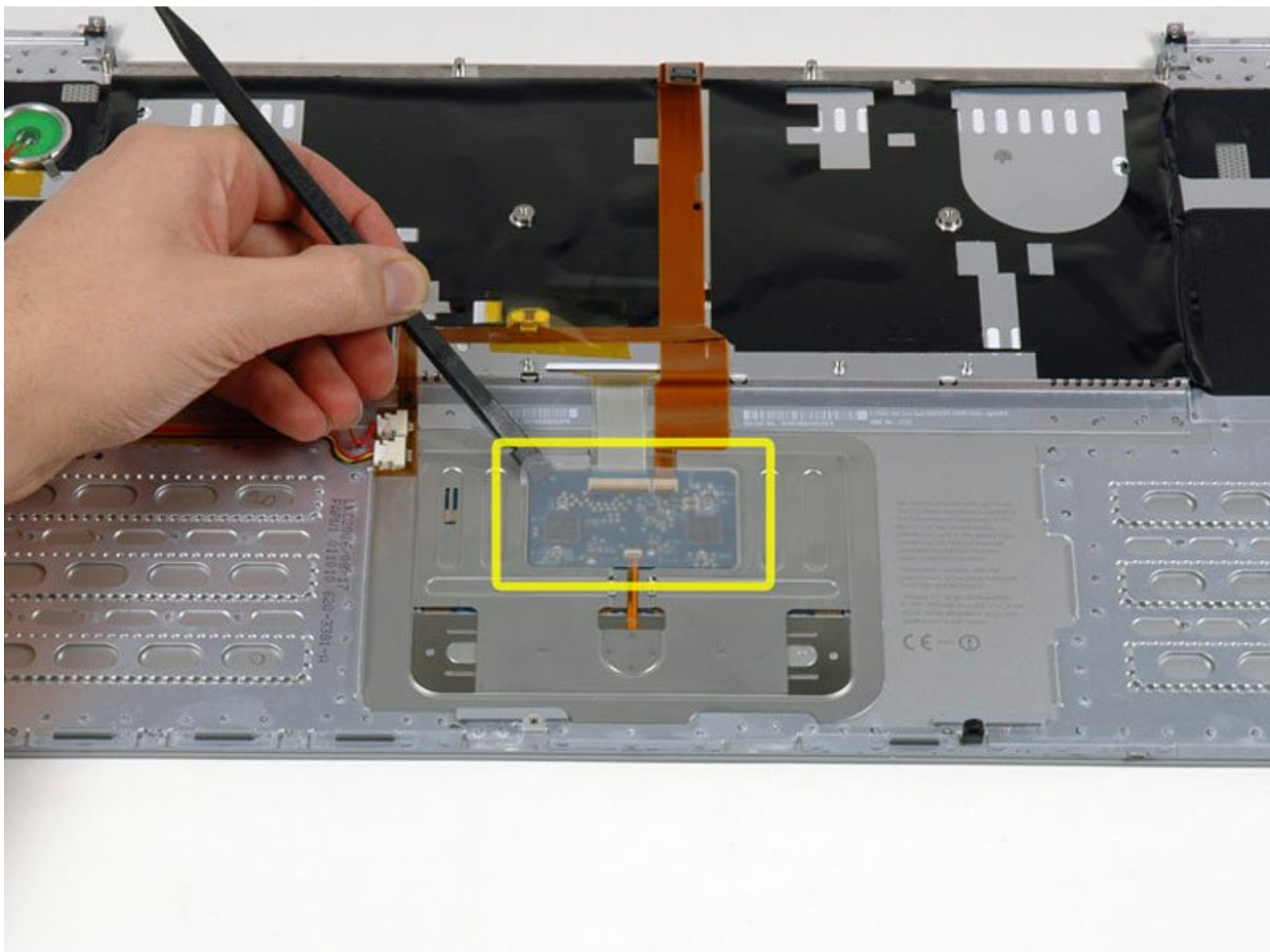




# MacBook Pro 15" Core Duo Model A1150

## Keyboard Replacement

Written By: iRobot



# INTRODUCTION

This guide shows the hidden screws you must remove when replacing the keyboard.



## TOOLS:

- [Phillips #00 Screwdriver](#) (1)
- [Spudger](#) (1)
- [T6 Torx Screwdriver](#) (1)



## PARTS:

- [MacBook Pro 15" \(Model A1150, A1211, A1226\) Keyboard](#) (1)

## Step 1 — Battery



- Use your fingers to push both battery release tabs away from the battery, and lift the battery out of the computer.

## Step 2 — Memory Door



- Remove the three identical Phillips screws from the memory door.
- ★ Make sure to record which sets of screws came from where. This will help when re-assembling.

## Step 3



- Lift the memory door up enough to get a grip on it, and slide it toward you, pulling it away from the casing.

## Step 4 — Upper Case



- Remove the two Phillips screws in the battery compartment near the latch.

## Step 5



- Remove the following 6 screws:
  - Two 10 mm T6 Torx screws on either side of the RAM slot.
  - Four 14.5 mm Phillips screws along the hinge.

## Step 6



- Remove the four Phillips screws on the port side of the computer.

## Step 7



- Rotate the computer 90 degrees and remove the two Phillips screws from the rear of the computer.

## Step 8



- Rotate the computer 90 degrees again and remove the four Phillips screws from the side of the computer.

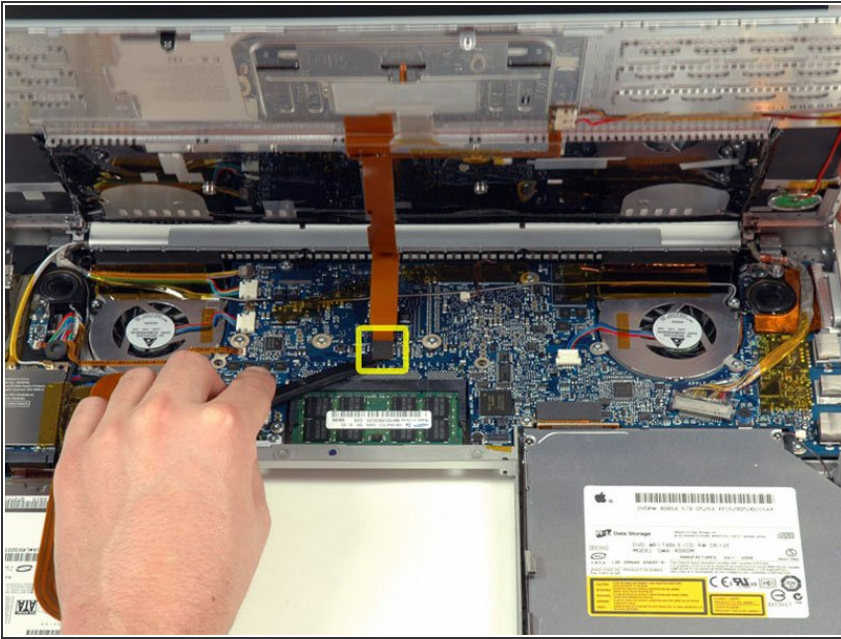


## Step 9



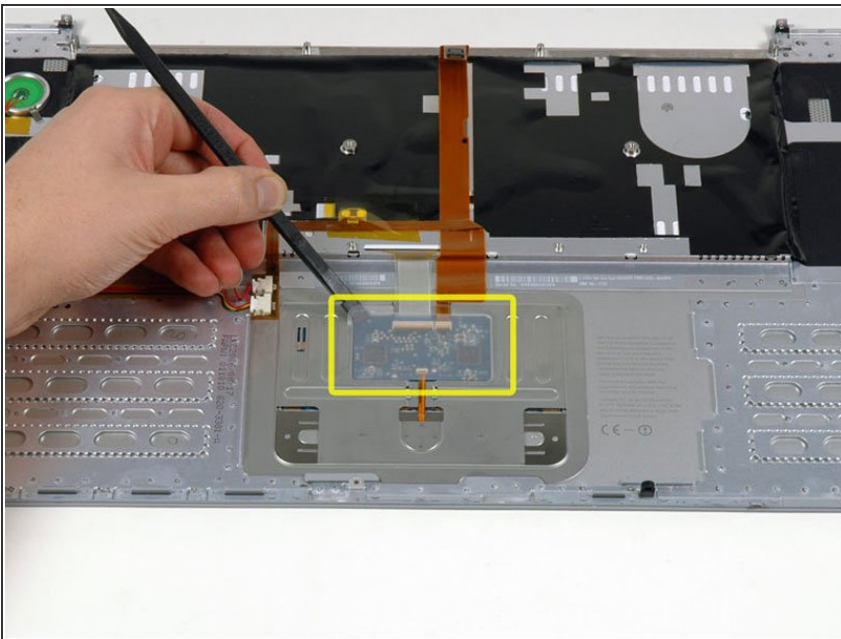
- ❗ Do not yank the upper case off quickly. The case is attached to the logic board via a ribbon cable.
- Lift up at the rear of the case and work your fingers along the sides, freeing the case as you go. Once you have freed the sides, you may need to rock the case up and down to free the front of the upper case. This stage can be quite tricky. Over the DVD reader are 4 tabs set back which pull out vertically.
- Note that the two small tongues on the left hand front of the upper case may bend while you remove the upper case. When re-installing, you may need to bend them back to fit in the grooves in the lower case.

## Step 10



- Disconnect the trackpad and keyboard ribbon cable from the logic board, removing tape as necessary.
- Remove the upper case.

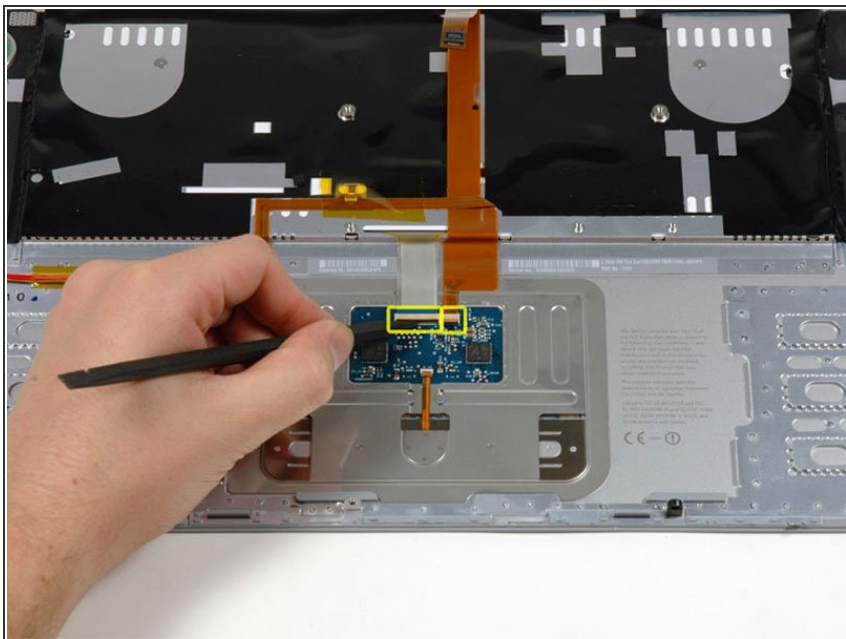
## Step 11 — Keyboard



- Use a spudger to pry up the translucent plastic sheath covering the keyboard connector.

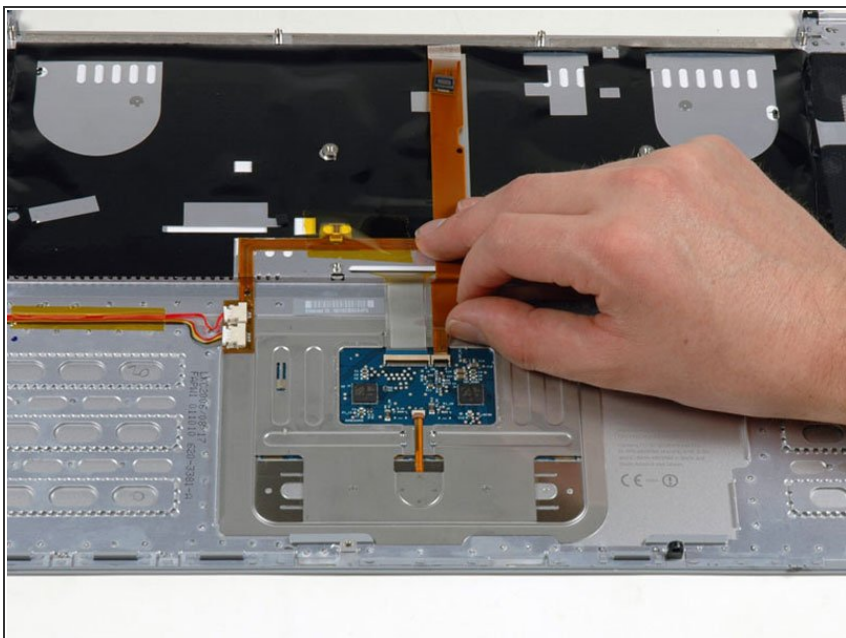


## Step 12



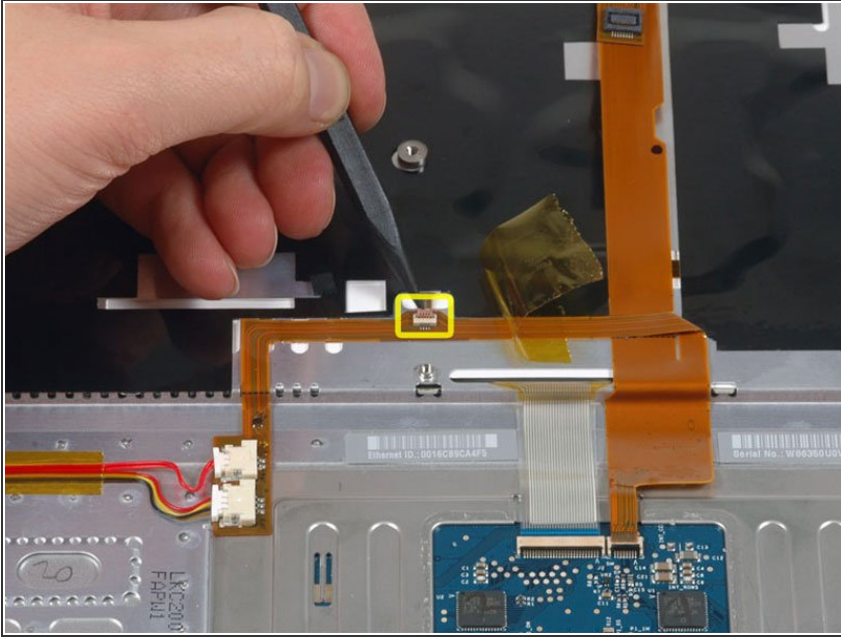
- Use the tip of a spudger to flip up the black plastic flaps locking down the keyboard and keyboard backlight ribbon cables.

## Step 13



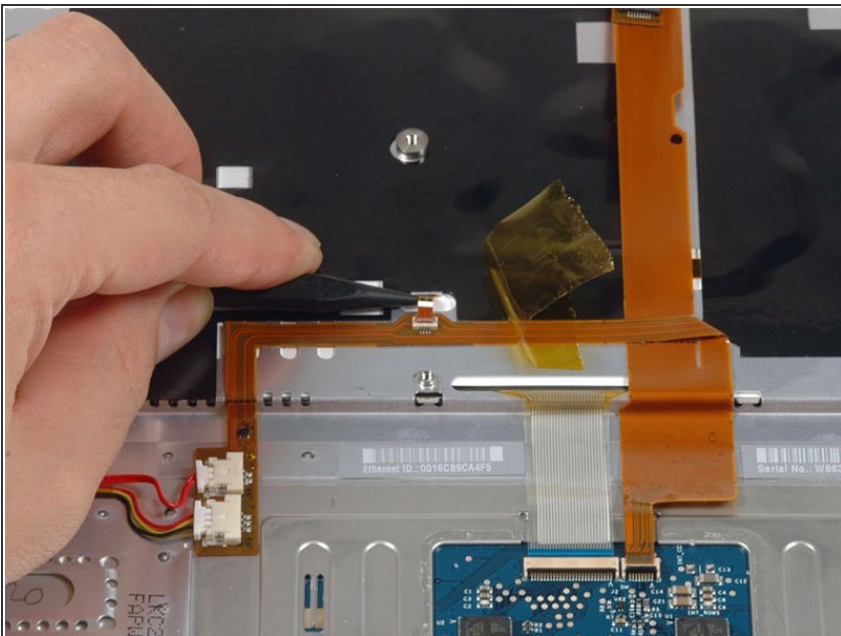
- Slide the orange keyboard backlight ribbon out of its connector.

## Step 14



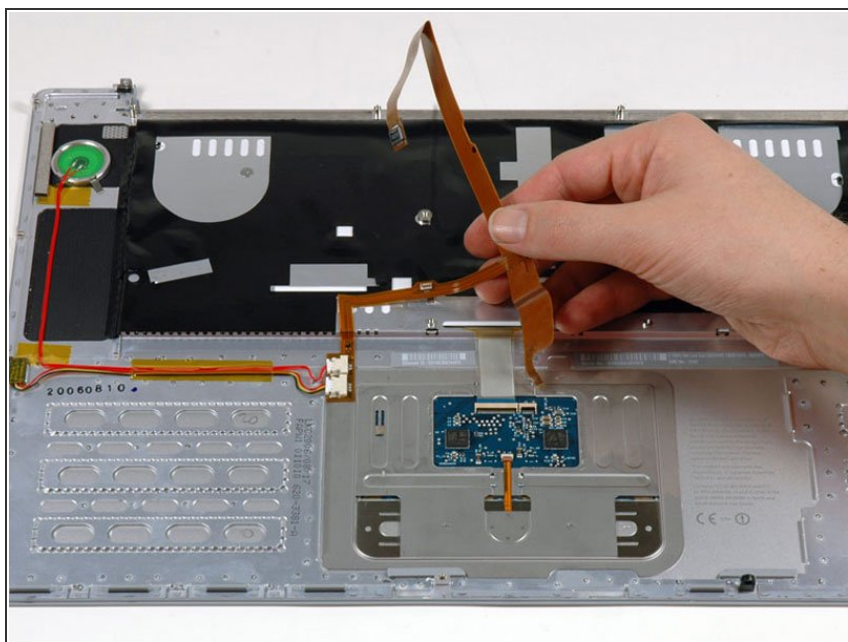
- Peel up the orange tape covering the keyboard backlight connector.
- Use the tip of a spudger to flip up the brown plastic flap locking down the keyboard backlight ribbon cable.

## Step 15



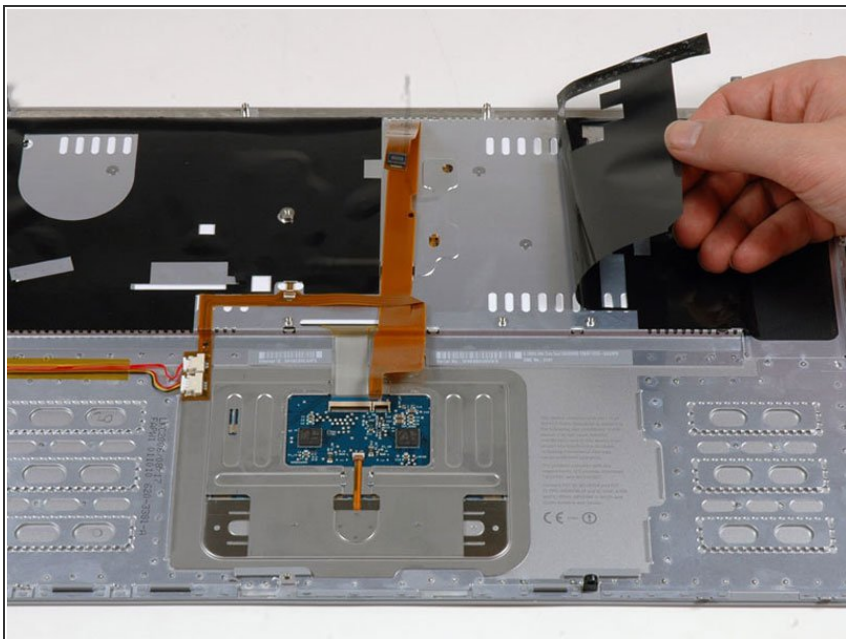
- Use a spudger or your finger to slide the keyboard backlight ribbon out of its connector.
- ★ When reinstalling the keyboard, be sure to feed the backlight ribbon cable through the upper case before fastening the keyboard to the upper case.

## Step 16



- Carefully peel up the orange ribbon cable which carries the power and sleep signals, removing tape as necessary

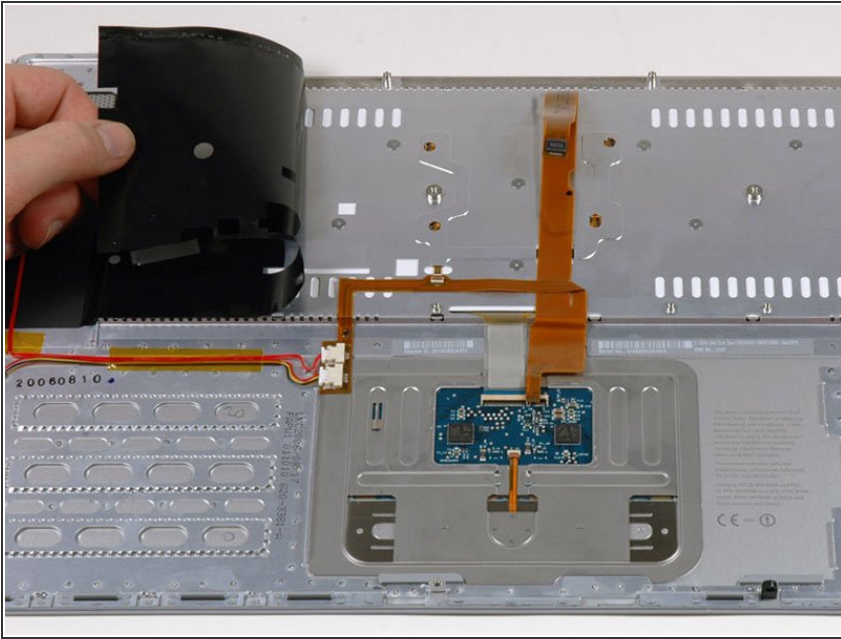
## Step 17



- Peel back the black protective sheath on the right side of the upper case. It is not necessary to fully remove this shield. Simply peel it back enough to access the screws beneath.

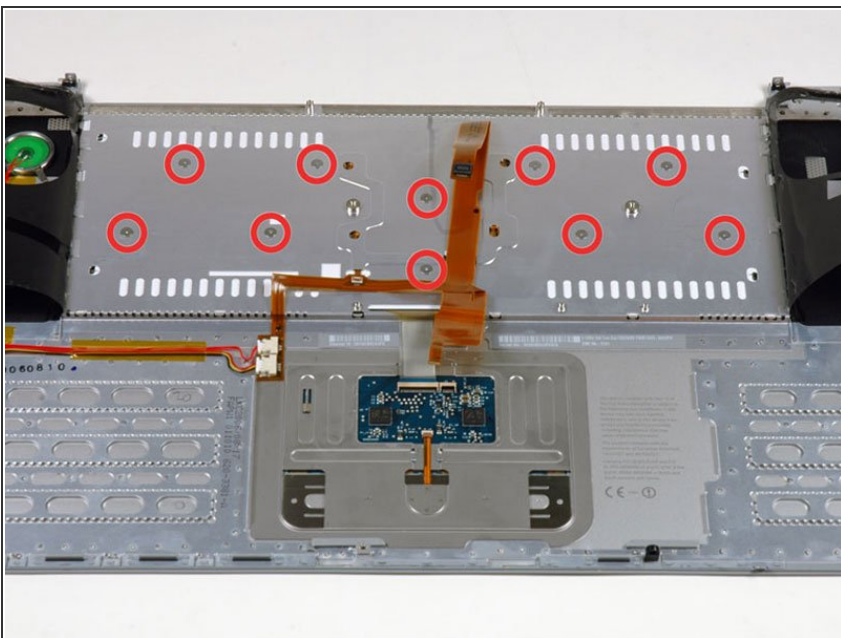


## Step 18



- Peel back the black protective sheath on the left side of the upper case. It is not necessary to fully remove this shield. Simply peel it back enough to access the screws beneath.

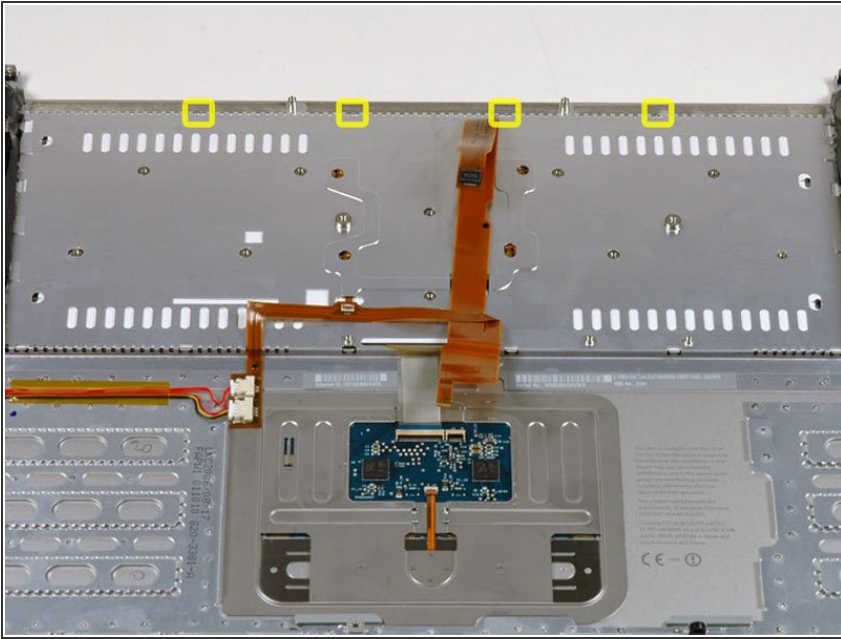
## Step 19



- Remove the ten identical Phillips screws attaching the keyboard to the casing.

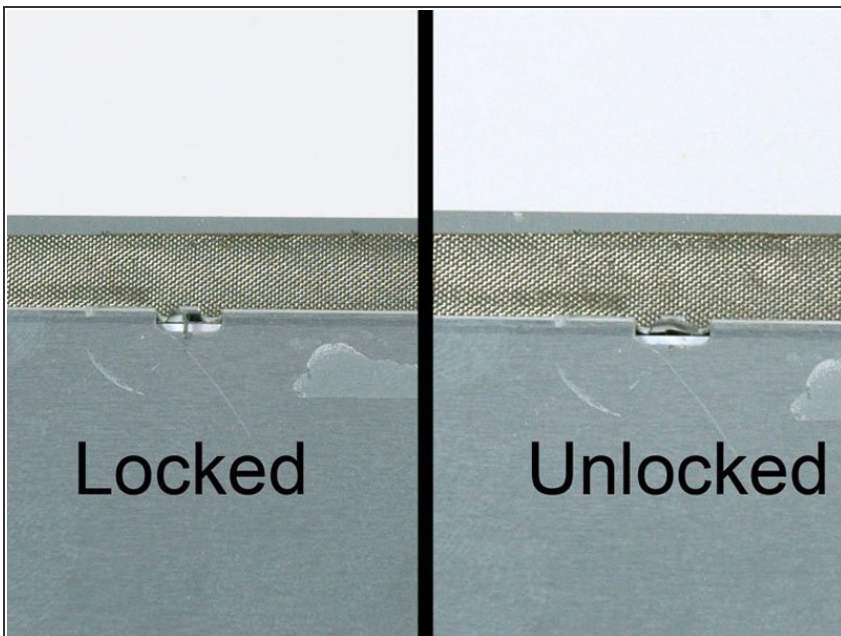


## Step 20



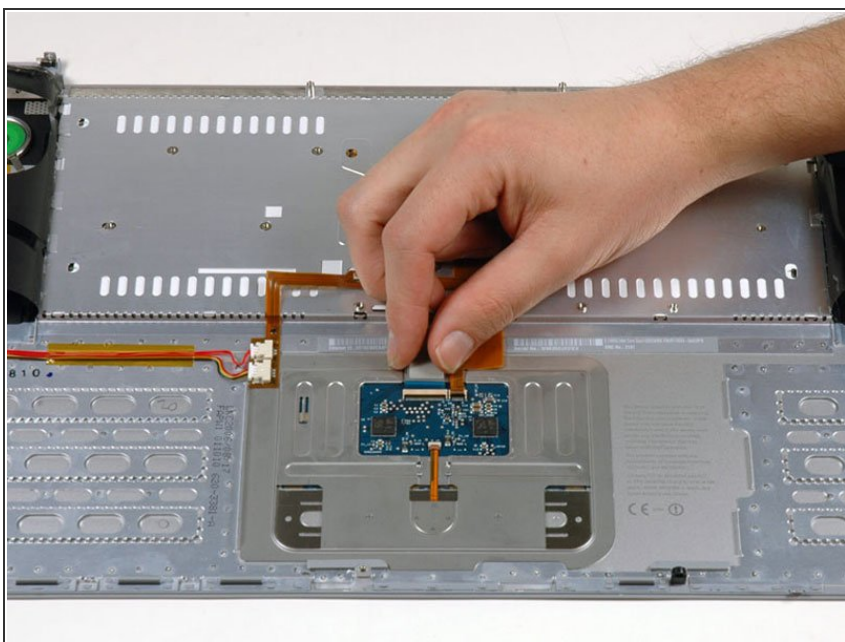
- There are four locking tabs along the back edge of the keyboard holding it in place. These tabs must be straightened before you can remove the keyboard.

## Step 21



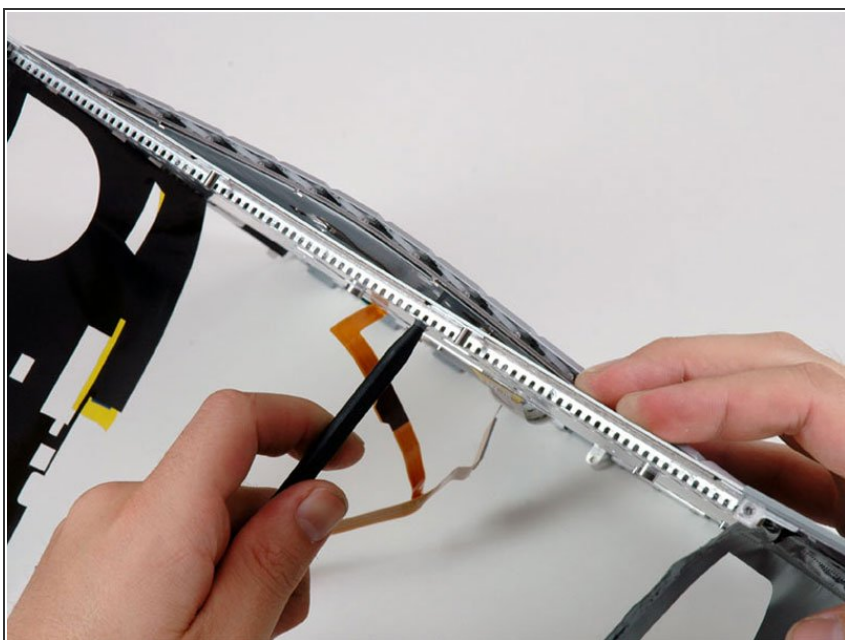
- The first frame shows a tab in the "locked" position and the second frame shows the same tab in the "unlocked" position.
- Use needlenose pliers or a spudger to bend each of the four tabs so that they are all in the "unlocked" position.

## Step 22



- Slide the keyboard ribbon out of its connector.
- ⓘ If the keyboard ribbon won't slide out, make sure that the black plastic flap holding the ribbon in place is vertical.
- ★ Before fastening the keyboard to the upper case, be sure to feed the keyboard ribbon cable and the backlight ribbon cable through the slots cut into the upper case.

## Step 23



- Place the upper casing on its edge and use a spudger to push the keyboard away from the casing, poking the spudger through the central keyboard screw hole. Grasp the keyboard as it separates from the casing.

## Step 24



- Maintaining your hold on the keyboard, lay the casing flat and gently bow the keyboard until the two tabs on either side of the keyboard come free.
- Slide the keyboard away from the trackpad and out of the upper case.

To reassemble your device, follow these instructions in reverse order.