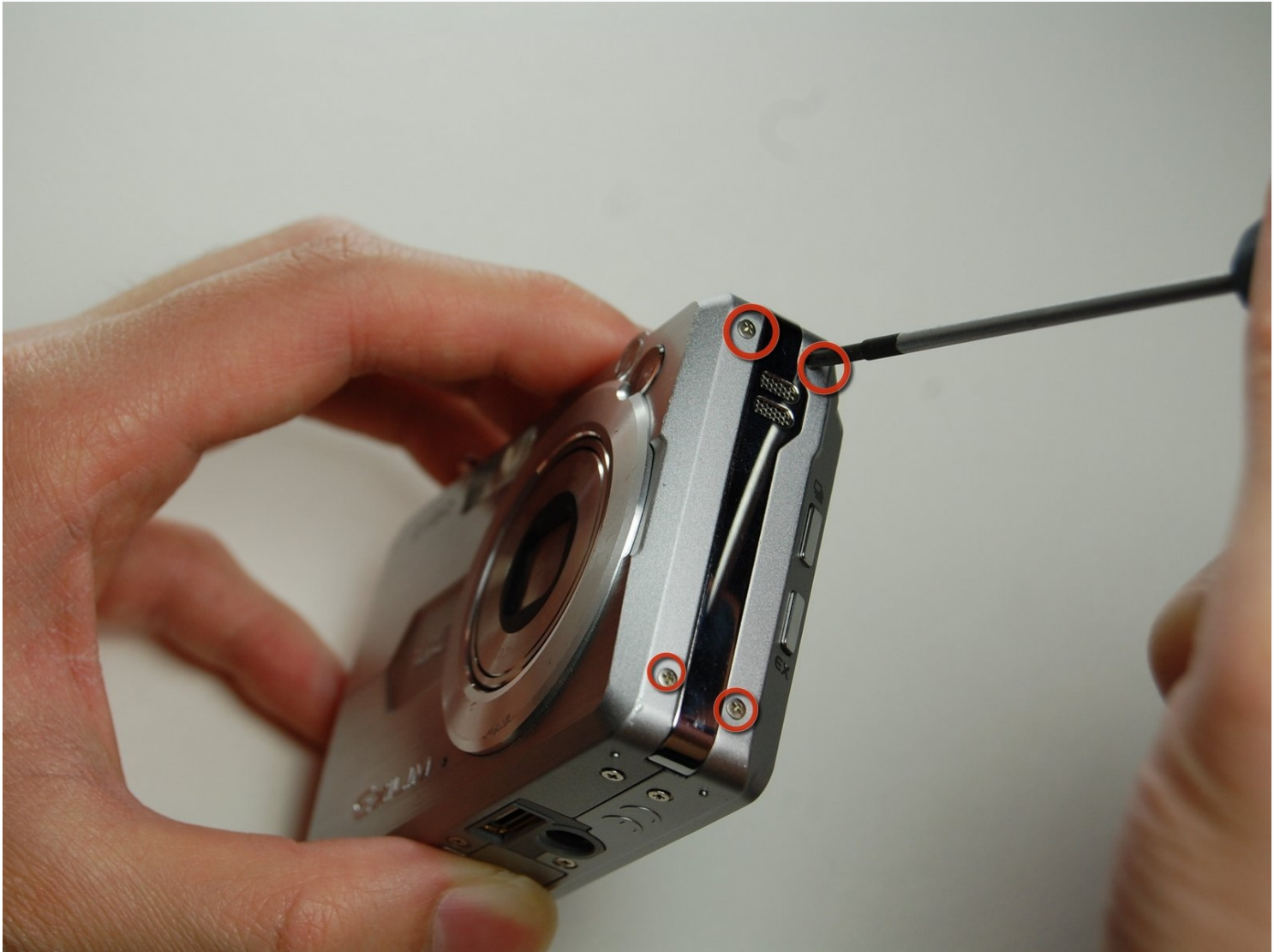




Casio Exilim EX-Z850 Battery Casing Disassembly

If you would like to clean your camera or check...

Written By: Logan



INTRODUCTION

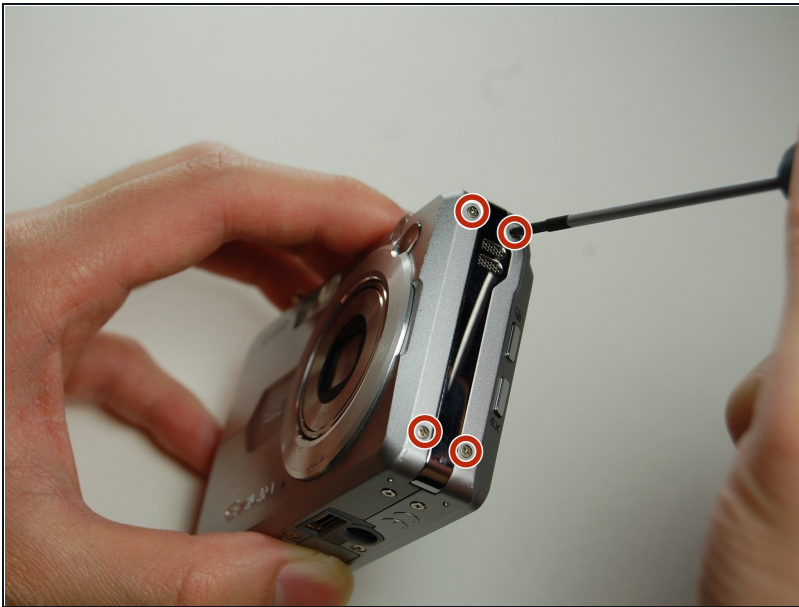
If you would like to clean your camera or check the connections, this guide describes how to remove the battery casing on the camera.

TOOLS:

Phillips #00 Screwdriver (1)

Tweezers (1)

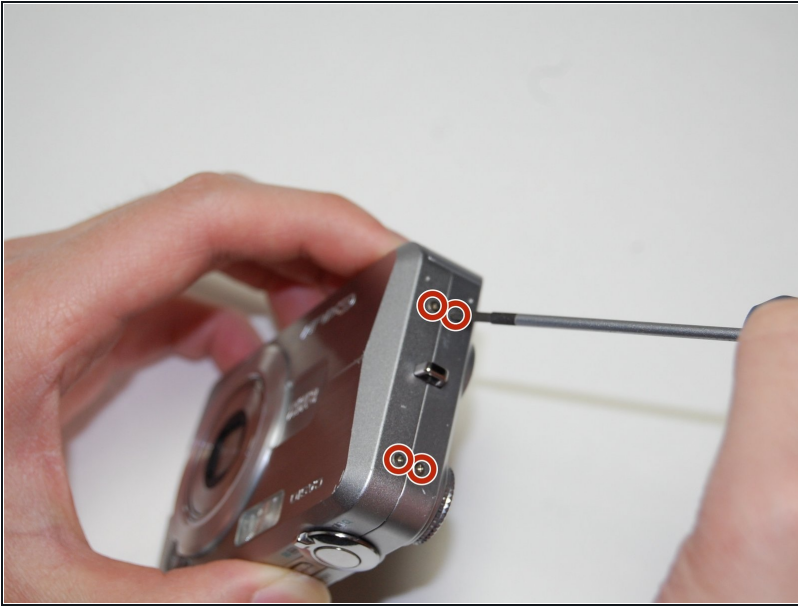
Step 1 — Casio Exilim EX-Z850 Battery Casing Disassembly



 Remove battery before you begin disassembly.

- Use a Phillips #00 Screwdriver to remove all four of the screws on the right side of the camera with the lens facing you.

Step 2



- Use a Phillips #00 screwdriver, unscrew all four screws on the left side of the camera.

Step 3



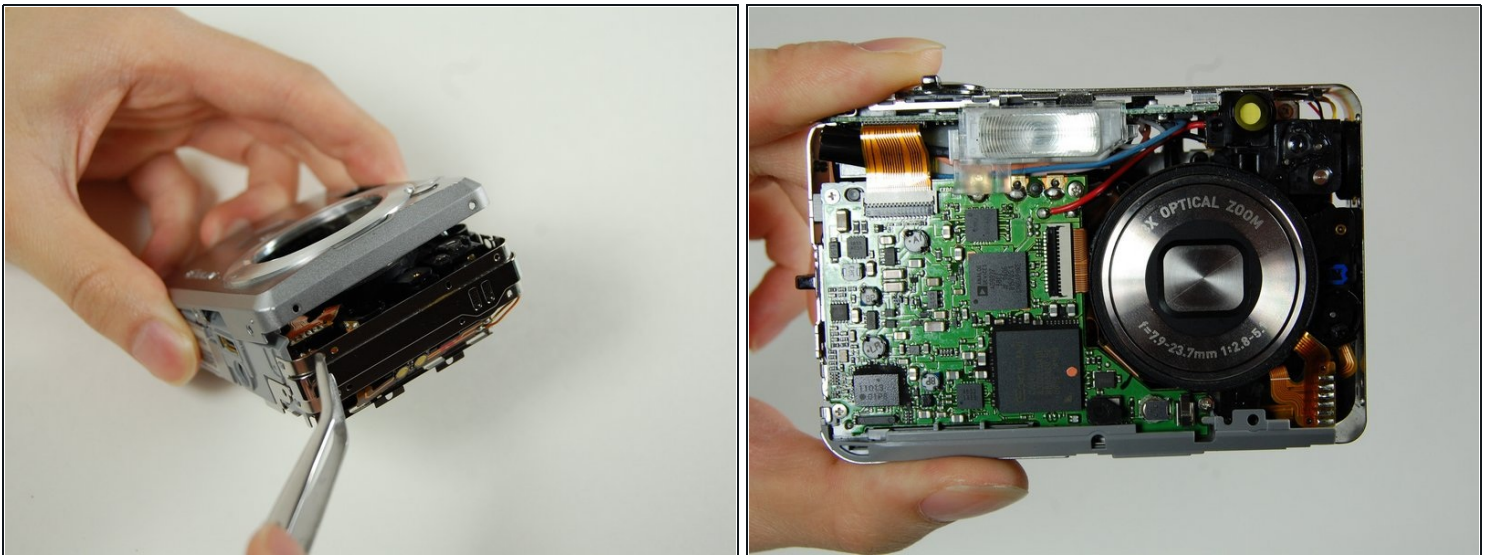
- Use the Phillips #00 screwdriver to remove all four of the screws on the bottom of the camera.
- ① Bottom screws are longer than the top screws, so label accordingly for easy reassembly.

Step 4



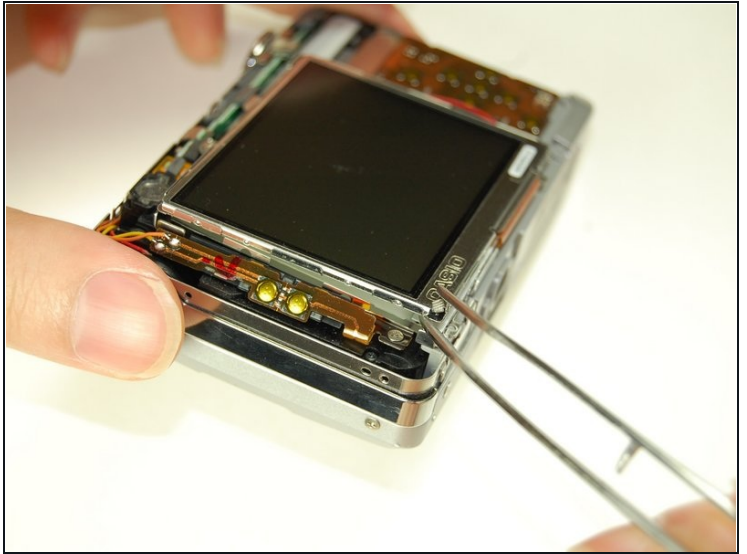
- Once all screws have been removed, slowly pry open the back casing of the camera.
- Gently remove the ribbon cable from the LCD with [tweezers](#).
- Set aside back casing of the camera.

Step 5



- Use your tweezers to hold the camera secure, while you pull the front cover off of the camera.

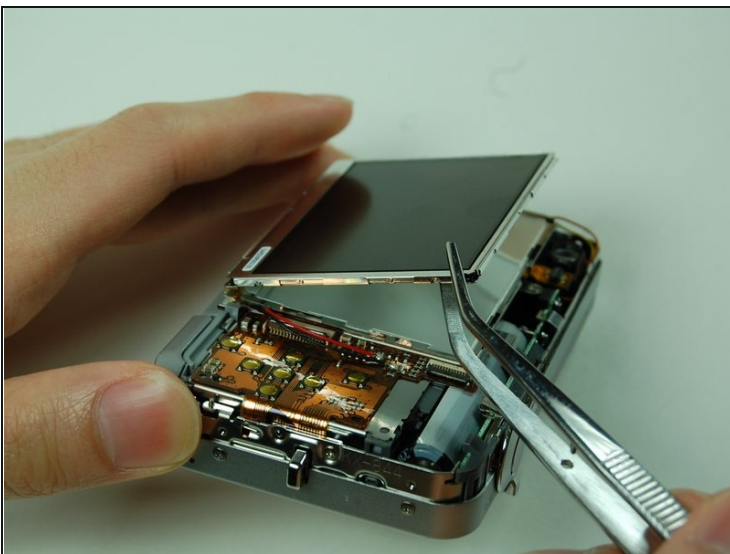
Step 6



ⓘ The bottom of the LCD screen is secured to the frame by small pieces of black tape. You will need to peel the tape away to release the LCD screen.

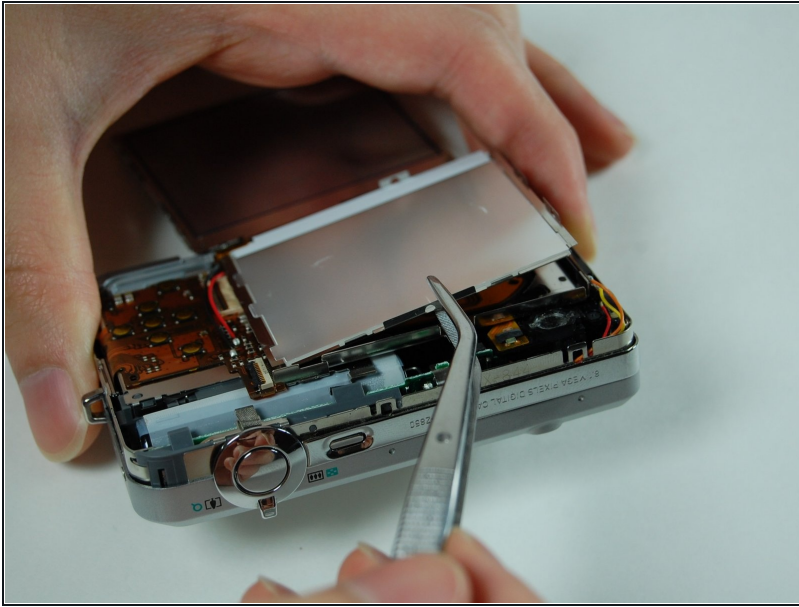
- Use your tweezers to lift the LCD screen from the frame.

Step 7



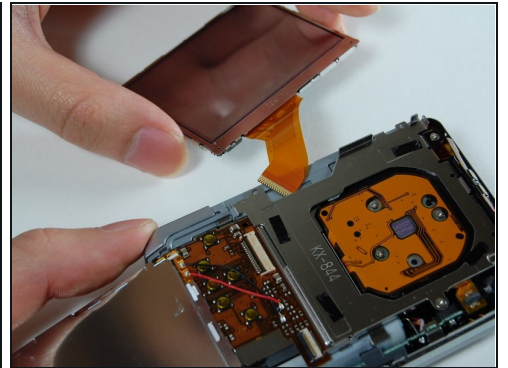
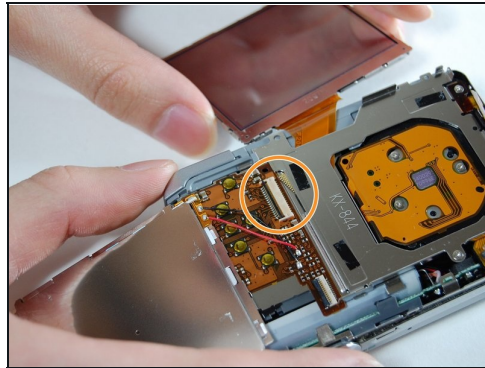
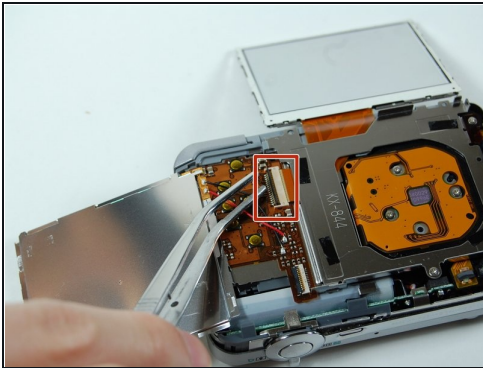
- Lift screen away from the camera with your tweezers.
- Flip screen over gently with your fingers once it is lifted far away enough from the camera.

Step 8



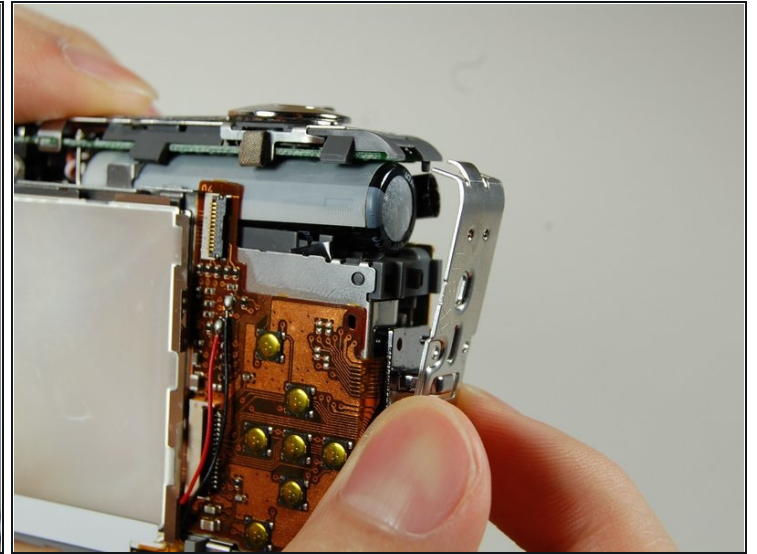
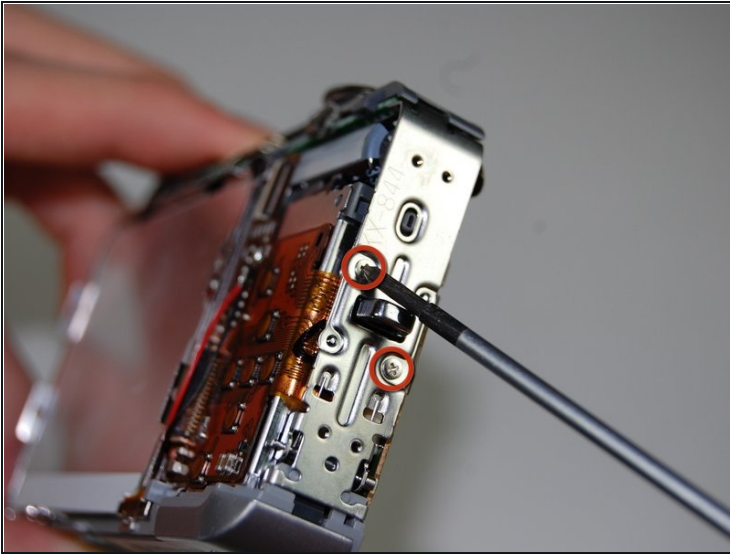
- Use your tweezers to lift the LCD frame from the camera.

Step 9



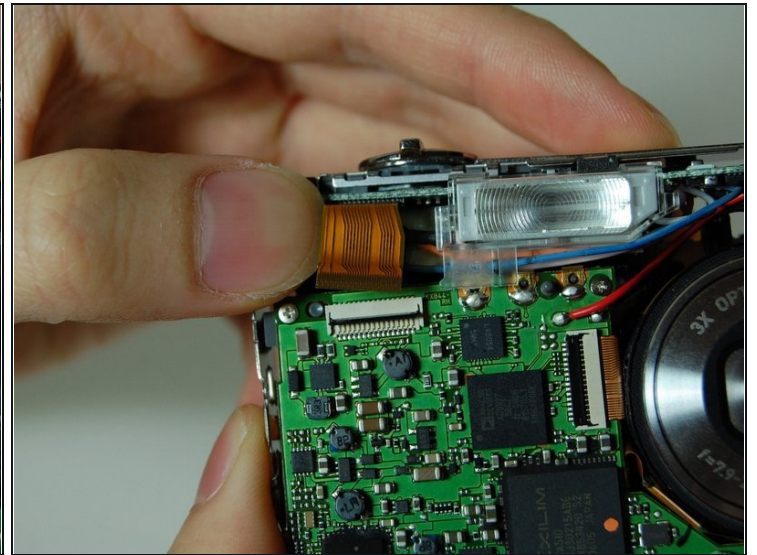
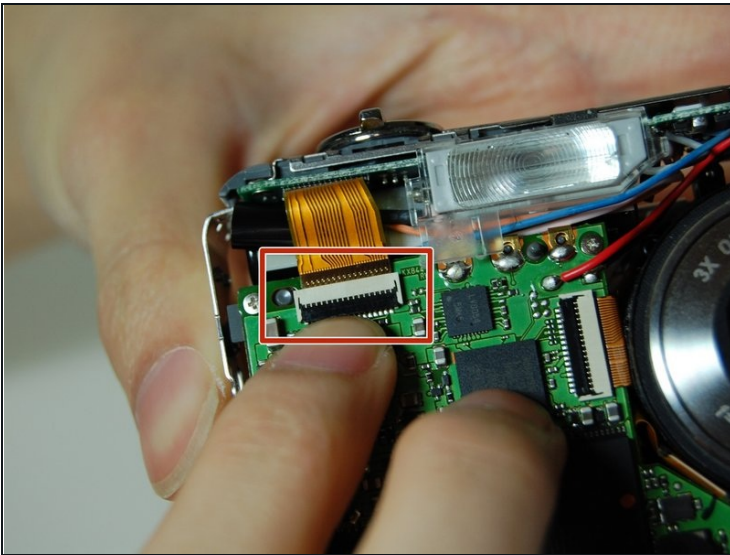
- Use your tweezers to lift the bar holding the ribbon off.
- Disconnect the ribbon to release the LCD screen.
- Use your fingers to pull the LCD screen with the attached ribbon from the camera.

Step 10



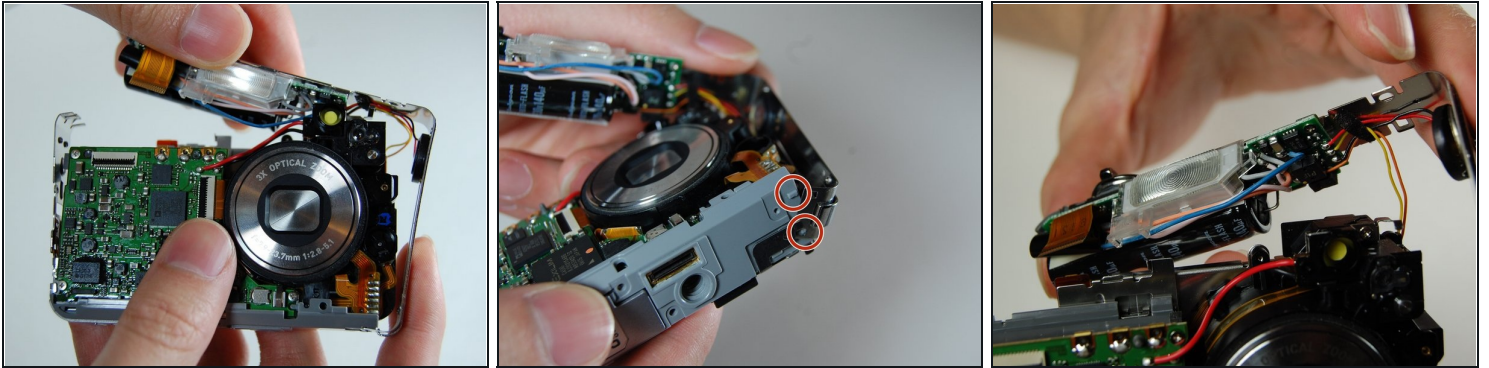
- Use a Phillips #00 screwdriver to remove the two screws from the side of the camera that has the strap mount.
- Remove strap mount by slowly pulling the side of the case so it will dislocate from the top of the camera.

Step 11



- Hold the camera facing toward you. Pull up the bar that is securing the ribbon located to the left of the flash.
- Disconnect the ribbon by prying it off with your fingers.

Step 12

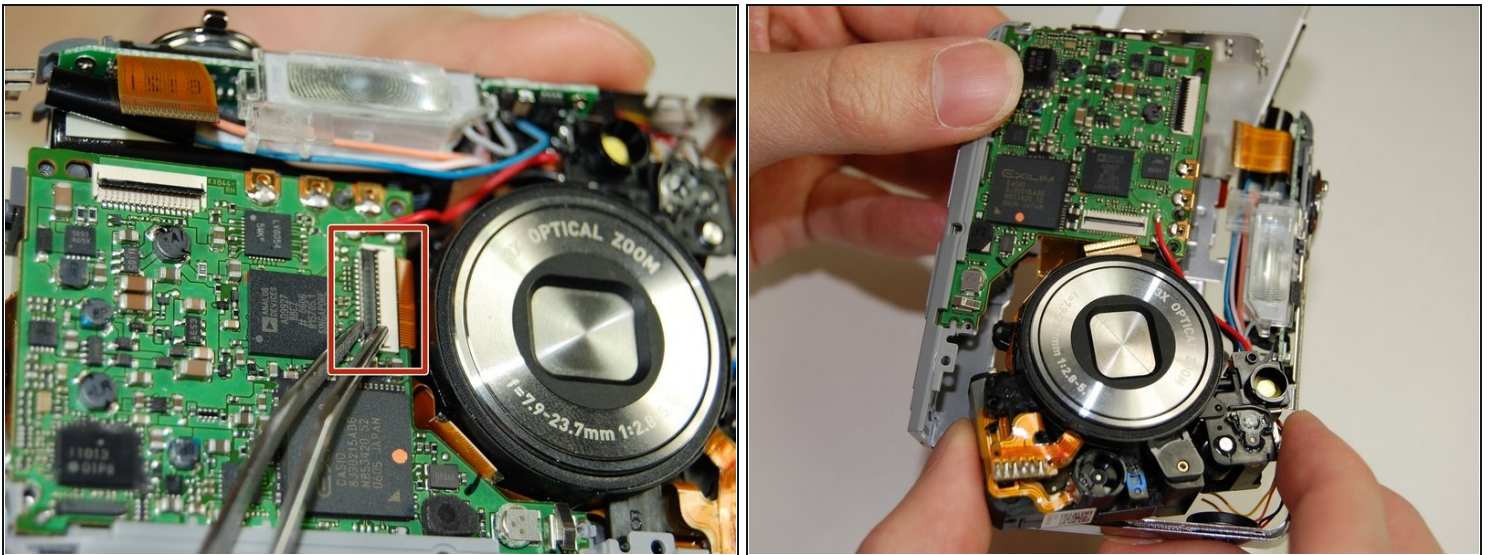


- With the lens facing towards you, pull the L-shaped frame away from the camera.

⚠ Do not disconnect any of the wires from the camera when pulling the frame.

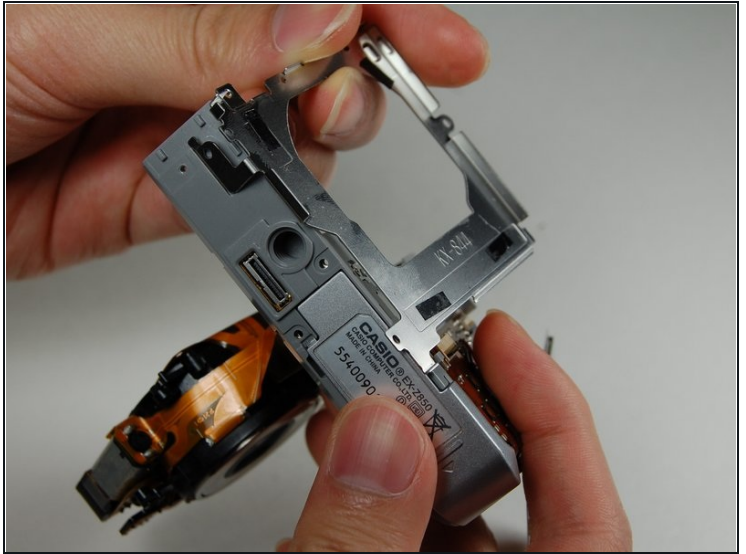
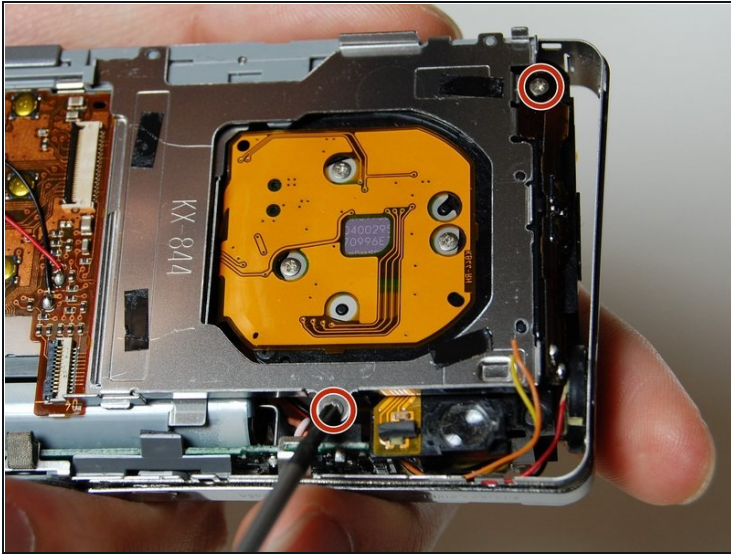
- Remove the frame from the two studs and metal tabs keeping it in place at the bottom of the camera.

Step 13



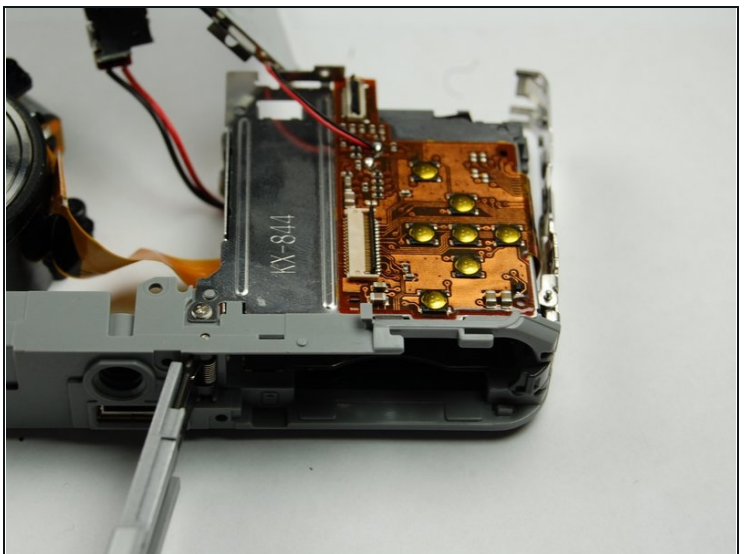
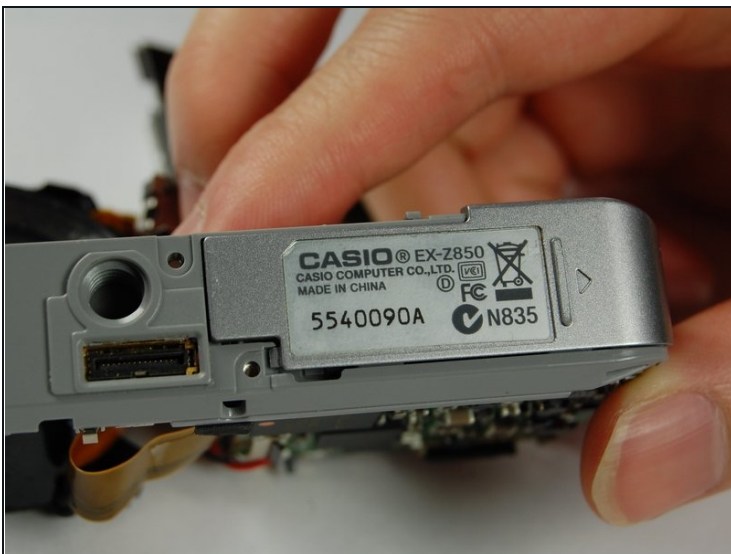
- Locate the logic board to the left of the lens. You will see a bar securing a ribbon. Flip the bar up to release the ribbon.
- Disconnect the ribbon.

Step 14



- Use your Phillips #00 screwdriver to remove the two screws connecting the frame to the back of the camera.
- Lift the frame away on the LCD screen side of the camera.

Step 15



- This is what your camera should look like now that you have the battery casing isolated.

To reassemble your device, follow these instructions in reverse order.