



Panasonic Lumix DMC-F7 Battery Replacement

How to unlock the battery case and take out the...

Written By: Hormoz Tarevern



INTRODUCTION

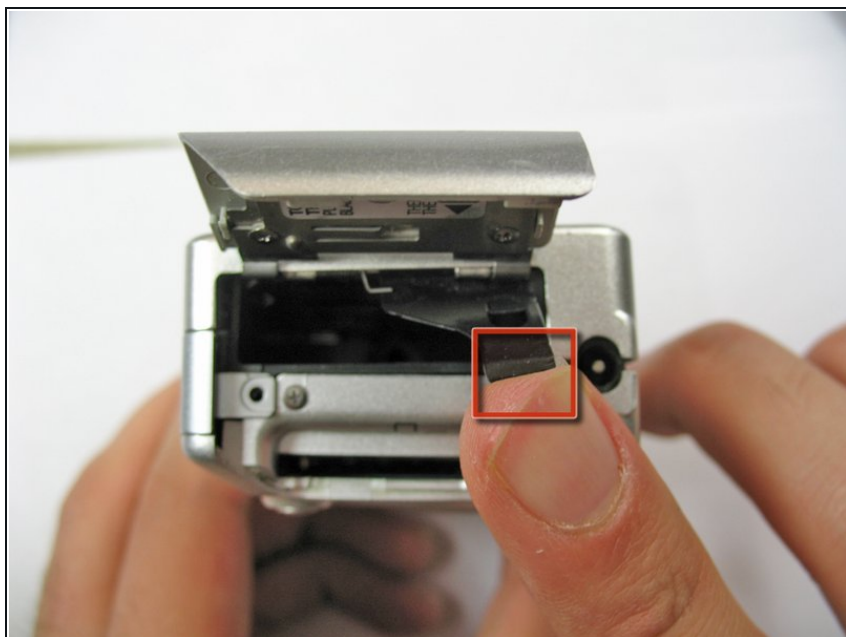
How to unlock the battery case and take out the battery.

Step 1 — Battery



- Slide the lock switch to the right so that it is in the unlocked position.
- Use your finger to slide the battery hatch in the direction of the downward arrow so that the hatch is open.
- ⓘ Both battery and memory card should now be visible.

Step 2



- Open the battery hatch and then the black cover to expose the battery compartment.
- ⓘ The camera used to create these repair guides did not have a battery and memory card.
- Remove the battery.
- ✦ When installing the new battery, ensure it is in the same orientation as before.

To reassemble your device, follow these instructions in reverse order.