



MacBook Pro 15" Core Duo Model A1150

Display Assembly Replacement

Use this guide to replace a MacBook Pro 15" Core Duo Model A1150 display assembly.

Written By: iRobot



INTRODUCTION

Use this guide to replace a cracked or malfunctioning display assembly on a MacBook Pro 15" Core Duo Model A1150. The display assembly is the component responsible for visual output. In this device, the display assembly includes the inverter, Airport antennas, hinges, and casing.

If your display is shattered, follow [this guide](#) to reinforce your screen to avoid injury until you replace the display. Make sure to power off your laptop completely and disconnect from any external power source prior to beginning this guide.

No special tools or skills are required to complete this repair procedure.



TOOLS:

- [Phillips #00 Screwdriver](#) (1)
- [Spudger](#) (1)
- [T6 Torx Screwdriver](#) (1)



PARTS:

- [MacBook Pro 15" \(Model A1150\) Display Assembly](#) (1)

Step 1 — Battery



- Use your fingers to push both battery release tabs away from the battery, and lift the battery out of the computer.

Step 2 — Memory Door



- Remove the three identical Phillips screws from the memory door.
- ☑ Make sure to record which sets of screws came from where. This will help when re-assembling.

Step 3



- Lift the memory door up enough to get a grip on it, and slide it toward you, pulling it away from the casing.

Step 4 — Upper Case



- Remove the two Phillips screws in the battery compartment near the latch.

Step 5



- Remove the following 6 screws:
 - Two 10 mm T6 Torx screws on either side of the RAM slot.
 - Four 14.5 mm Phillips screws along the hinge.

Step 6



- Remove the four Phillips screws on the port side of the computer.

Step 7



- Rotate the computer 90 degrees and remove the two Phillips screws from the rear of the computer.

Step 8



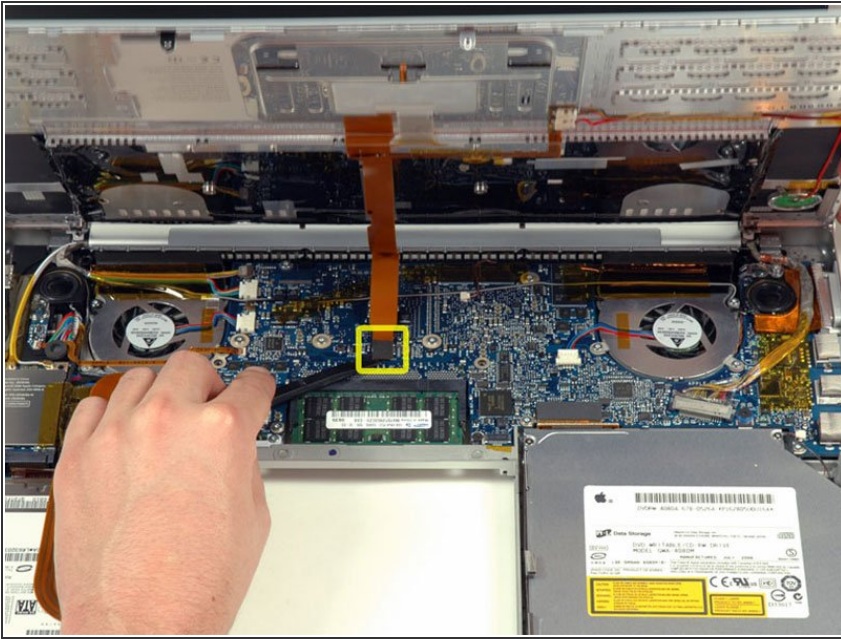
- Rotate the computer 90 degrees again and remove the four Phillips screws from the side of the computer.

Step 9



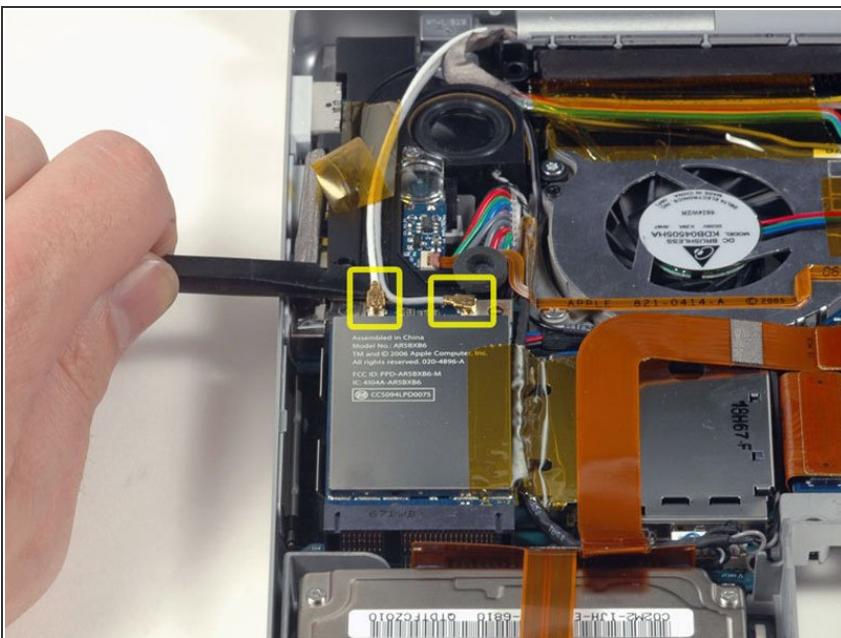
- ❗ Do not yank the upper case off quickly. The case is attached to the logic board via a ribbon cable.
- Lift up at the rear of the case and work your fingers along the sides, freeing the case as you go. Once you have freed the sides, you may need to rock the case up and down to free the front of the upper case. This stage can be quite tricky. Over the DVD reader are 4 tabs set back which pull out vertically.
- Note that the two small tongues on the left hand front of the upper case may bend while you remove the upper case. When re-installing, you may need to bend them back to fit in the grooves in the lower case.

Step 10



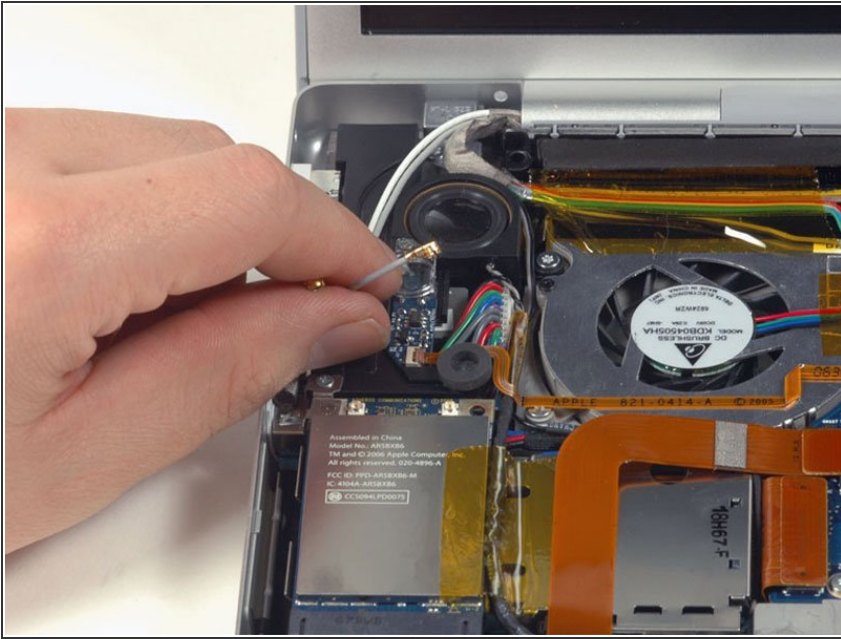
- Disconnect the trackpad and keyboard ribbon cable from the logic board, removing tape as necessary.
- Remove the upper case.

Step 11 — Display Assembly



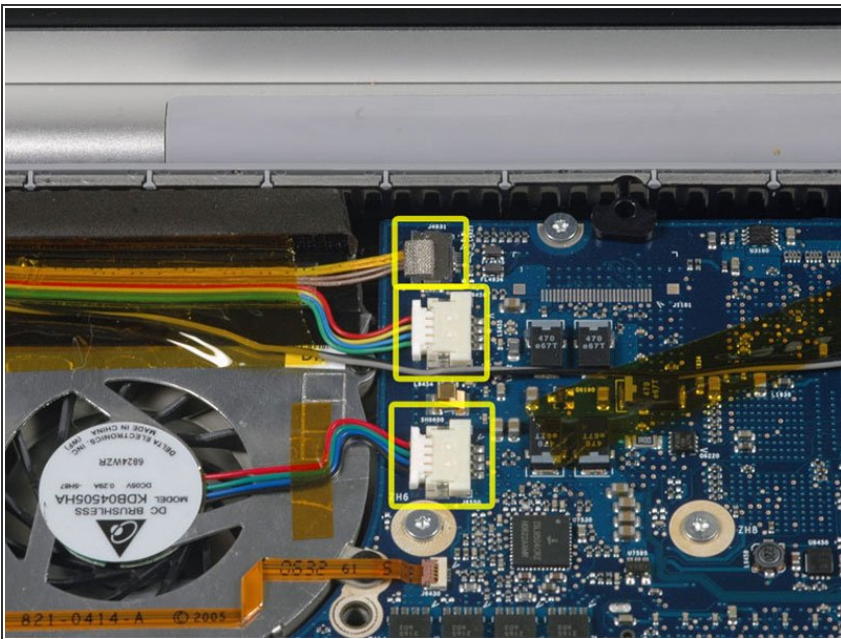
- Disconnect the two antenna cables attached to the Airport Extreme card.
- ✦ The white antenna cable connects to the left side of the Airport Extreme card.

Step 12



- Deroute the Airport antenna cables from their channel in the left speaker.

Step 13



- Disconnect the iSight, inverter, and left fan cables from the logic board by gently pulling in the direction of each cable.

Step 14



- Disconnect the display data cable from the logic board.

Step 15



- Remove the silver T6 Torx screw securing the ground loop on the display data cable to the casing.

Step 16



- Support the display with one hand while removing the following 3 screws:
 - Two 9.5 mm silver T6 Torx screws with threads on only part of the shaft on the inside of the display hinges.
 - One 9.5 mm silver T6 Torx screw with threads on the entire shaft on the outside of the left hinge.

Step 17



- Grasp the display assembly on both sides and lift it up and out of the computer.

To reassemble your device, follow these instructions in reverse order.