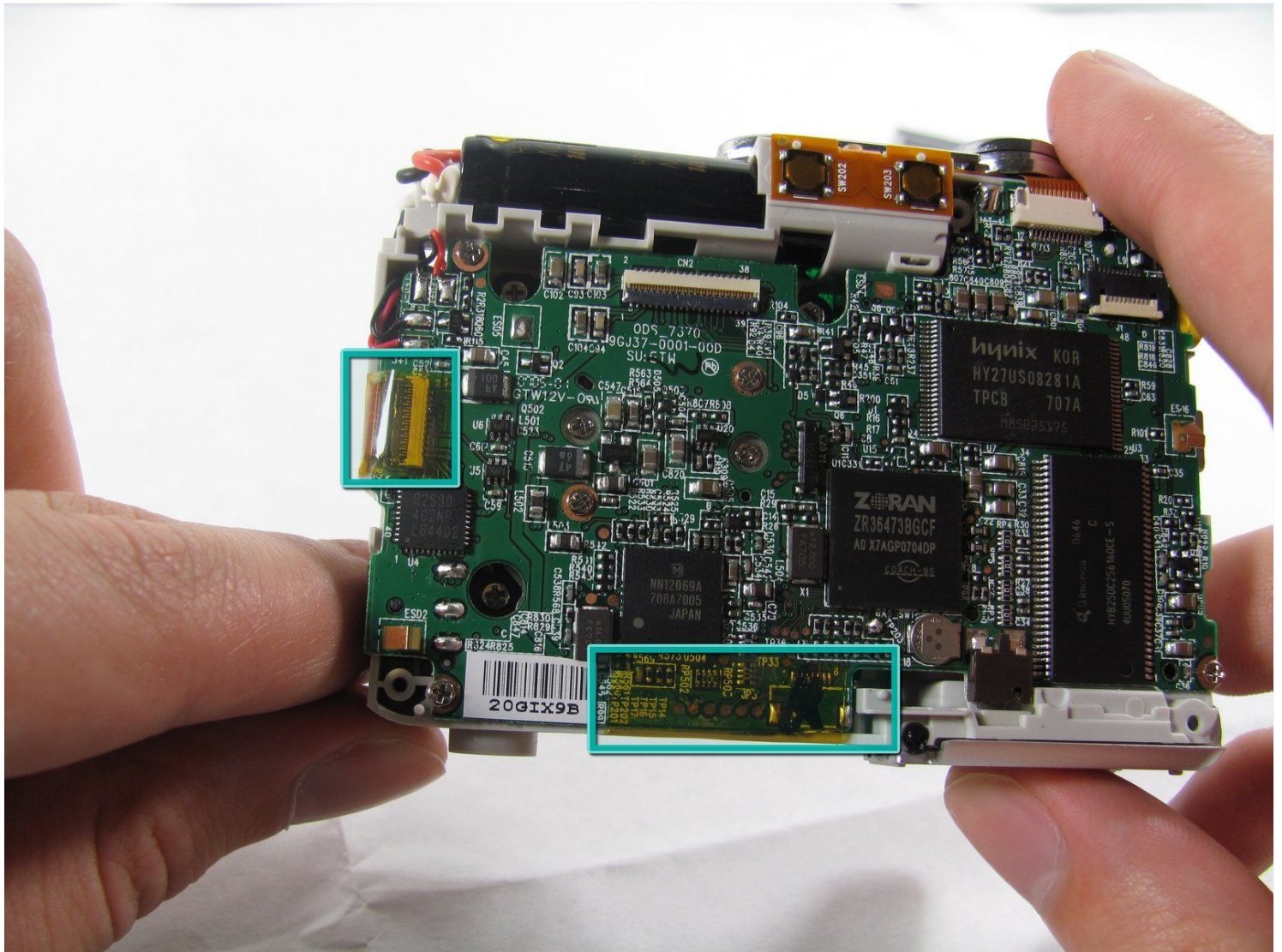




# Removing Olympus FE-210 Motherboard

Before removing the Motherboard you must first...

Written By: Alex Wolff



# INTRODUCTION

Before removing the Motherboard you must first remove the LCD Screen.

## TOOLS:

Phillips #00 Screwdriver (1)

Soldering Iron (1)

Tweezers (1)

## Step 1 — Battery



- The battery compartment is located on the bottom side of the camera. Push the button in, and slide the cover to get access to the batteries.

## Step 2



- The batteries will slide right out.
- ☑ When putting new batteries in, make sure they are pointing the right direction.

## Step 3 — Front Casing



- Remove the 7 screws holding the front case in place, with a #00 screwdriver.
  - Six screws are 3.6 mm.
  - The seventh screw is 3.2 mm.

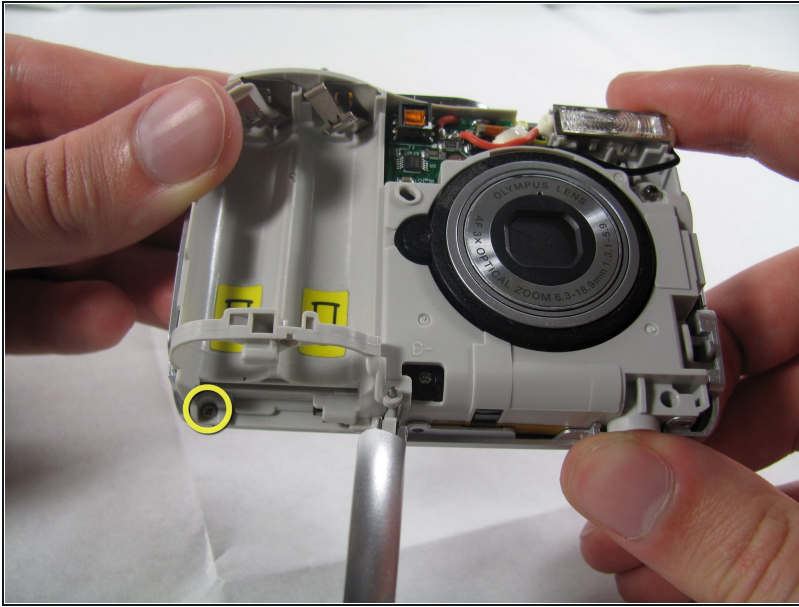


## Step 4



- Pulling the front case off, requires applying enough strength in the right areas.
  - The front case snaps into place in three places:
    - At the top and bottom of the battery side (opposite of side pictured) of the case.
    - Right in the middle of the DC-in side (side pictured) of the case.
    - Top of the camera, to the left of the power button.
  - Once those places are disconnected, the front case will pop right off.
- ① The camera in the first two pictures is upside down. This is the best position to place your thumbs to remove the case.

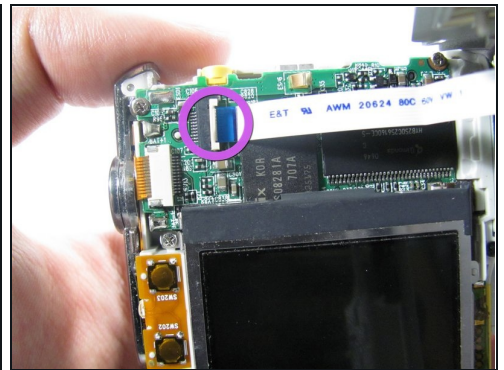
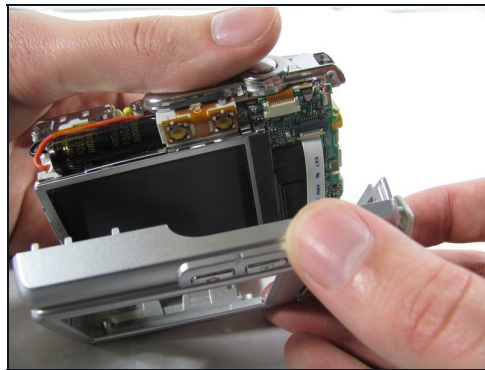
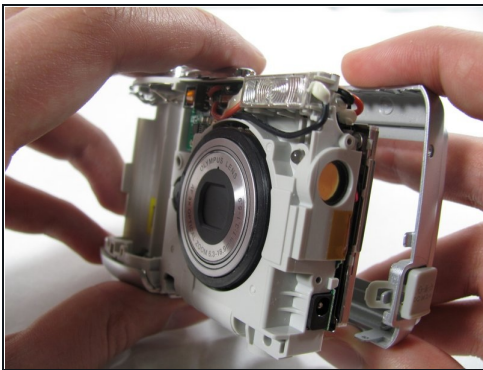
## Step 5 — Rear Casing



- Remove the 3.2 mm screw in the battery compartment using a #00 screwdriver.

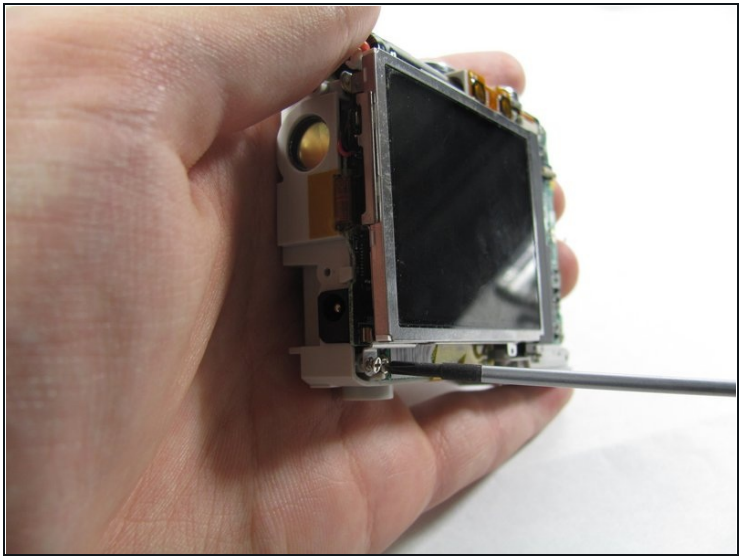
⚠ After removal of the screw the case will be loose, but do not tug it off. There is a cord connecting the rear controls to the motherboard.

## Step 6



- Carefully pull the rear case away from the camera until you have access to the cord connected to the motherboard.
- Lift the white latch using a fingernail or a spudger.
- Pull the cord from its connector.

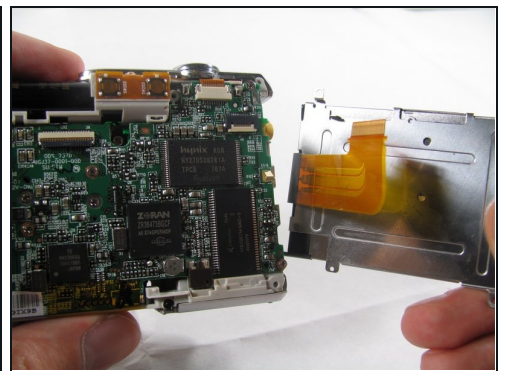
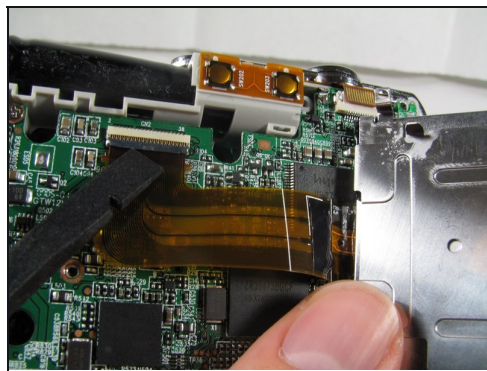
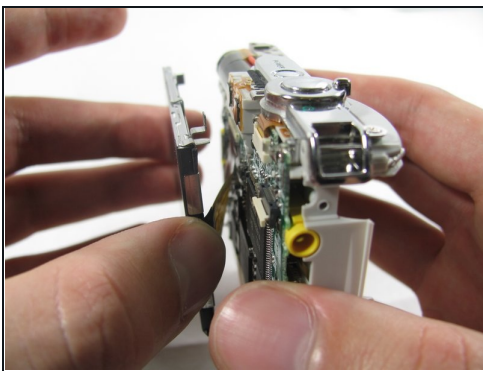
## Step 7 — LCD Screen



- Remove the two 2.7 mm screws using a #00 screwdriver.

⚠ After removing the screws the display will be free. Do not remove it. Like the rear case, there is a cord connecting it to the motherboard that must be disconnected first.

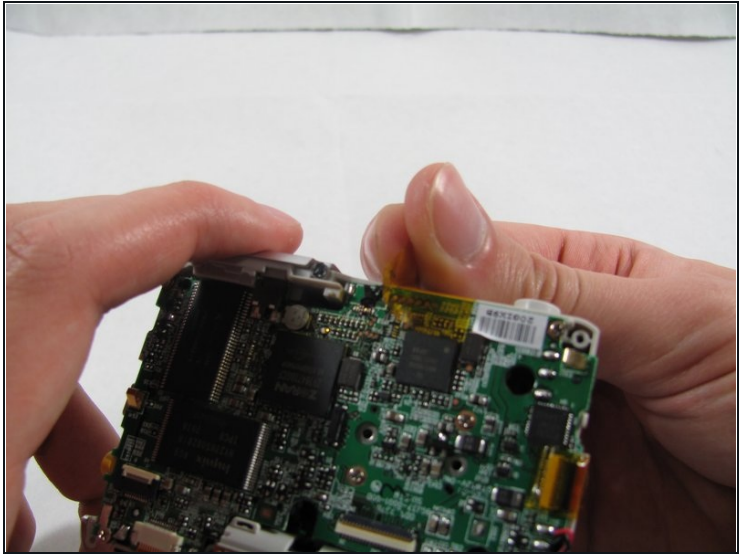
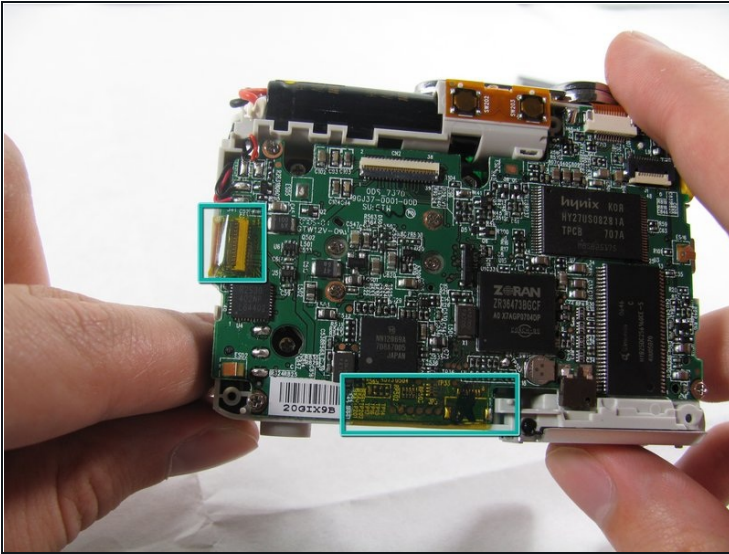
## Step 8



- Using a spudger, lift the latch on the connector.
- Remove the ribbon cord from its connector.
- Remove the LCD from the rest of the camera.



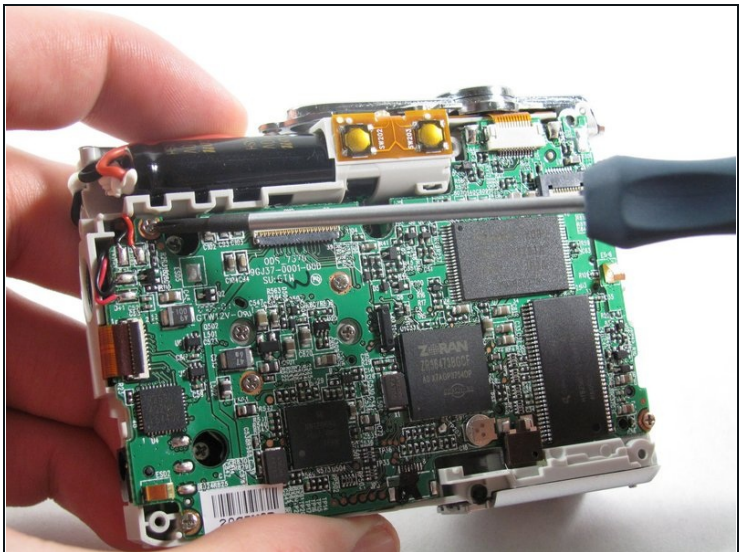
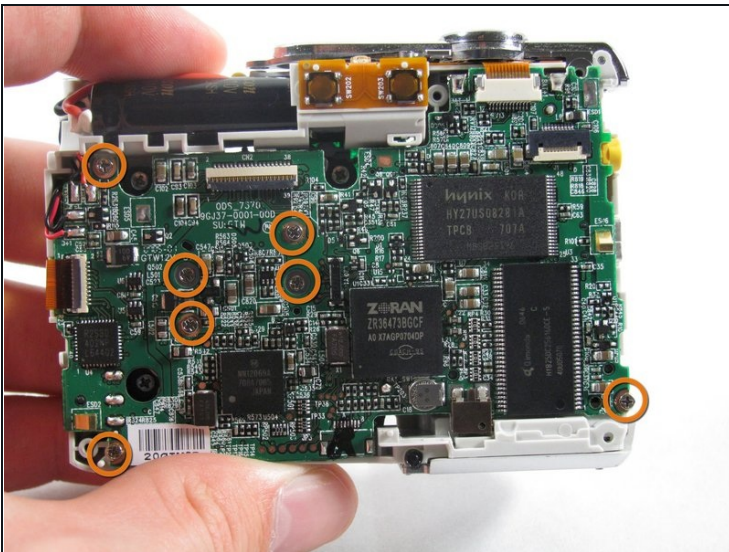
## Step 9 — Motherboard



- Remove the 2 pieces of translucent yellow tape.

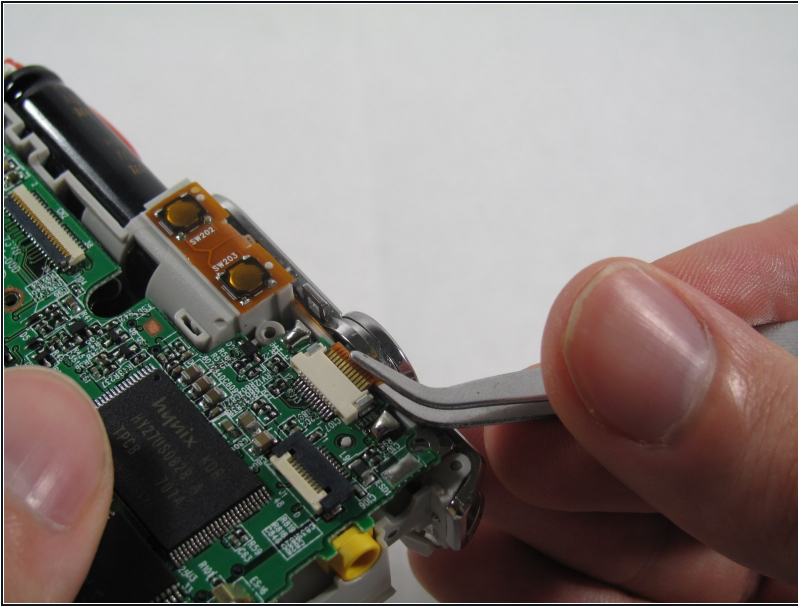
⚠ Removing these pieces of tape will void the camera warranty. They serve no functional purpose and do not need to be replaced during reassembly.

## Step 10



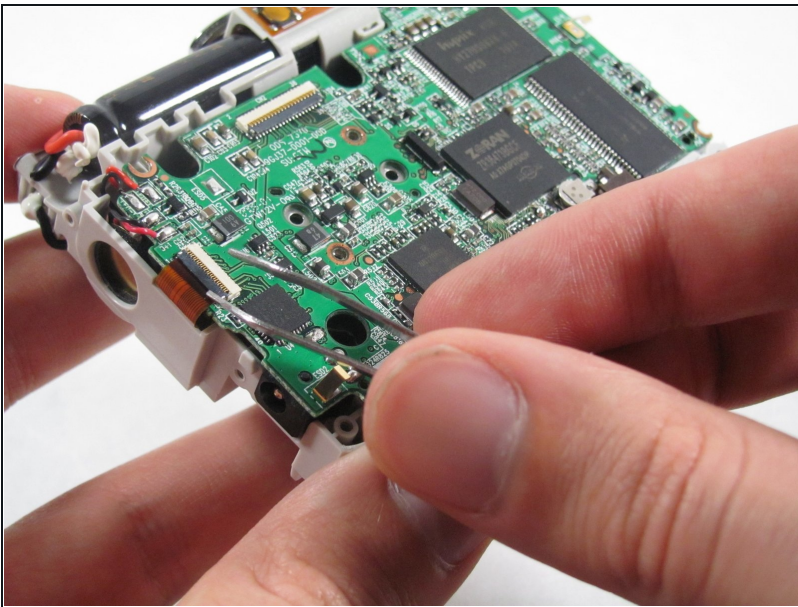
- Remove the seven 2.7 mm using a #00 screwdriver.

## Step 11



- Remove the ribbon cord located near the top right corner of the motherboard. Do this by carefully pulling the cord out of the socket using a pair of [tweezers](#).

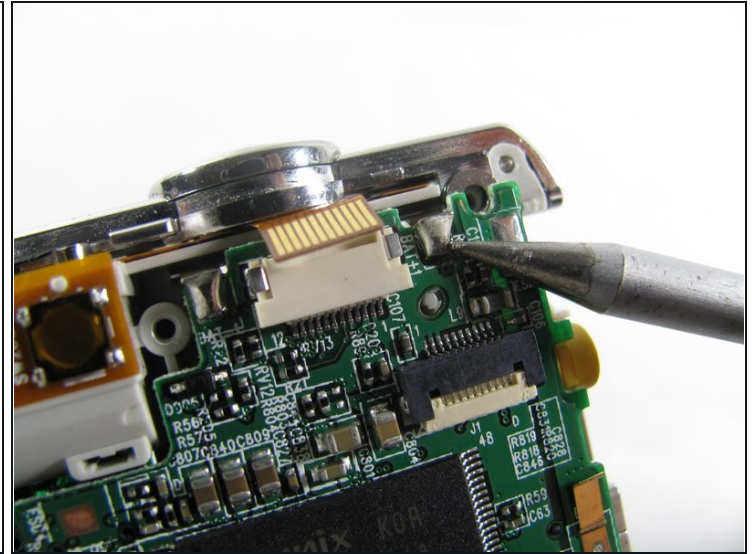
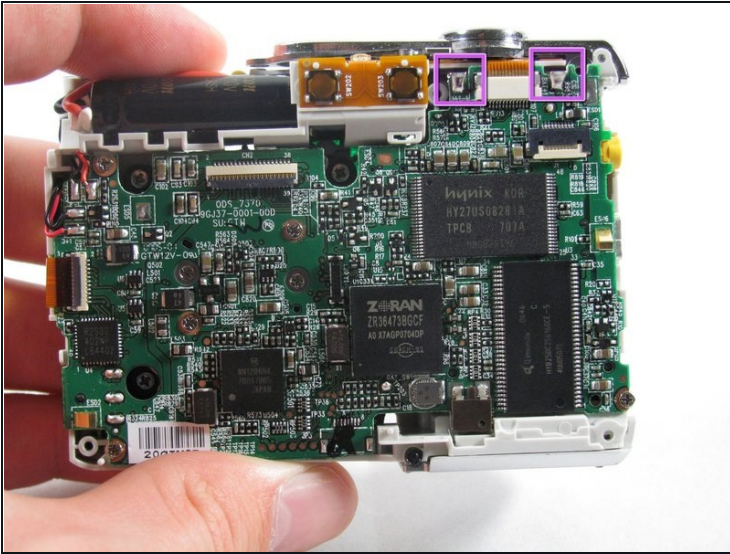
## Step 12



- Disconnect the ribbon cord located on the left side of the motherboard.
- Use tweezers or a spudger to lift the latch on the connector.
- Carefully remove the cord from the connector.



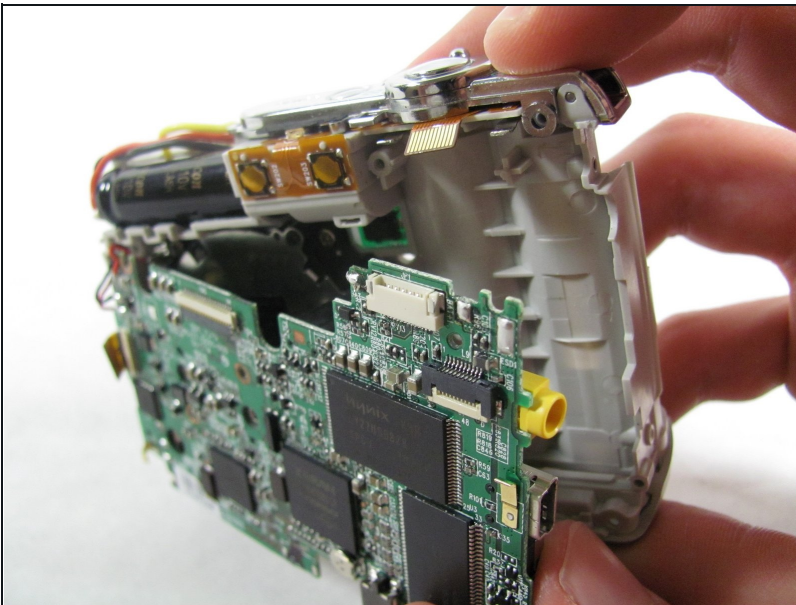
## Step 13



- De-solder the 2 connection points.

⚠ Be careful to not damage any part of the circuit board with the soldering iron.

## Step 14



- Remove the motherboard from the camera casing.

To reassemble your device, follow these instructions in reverse order.