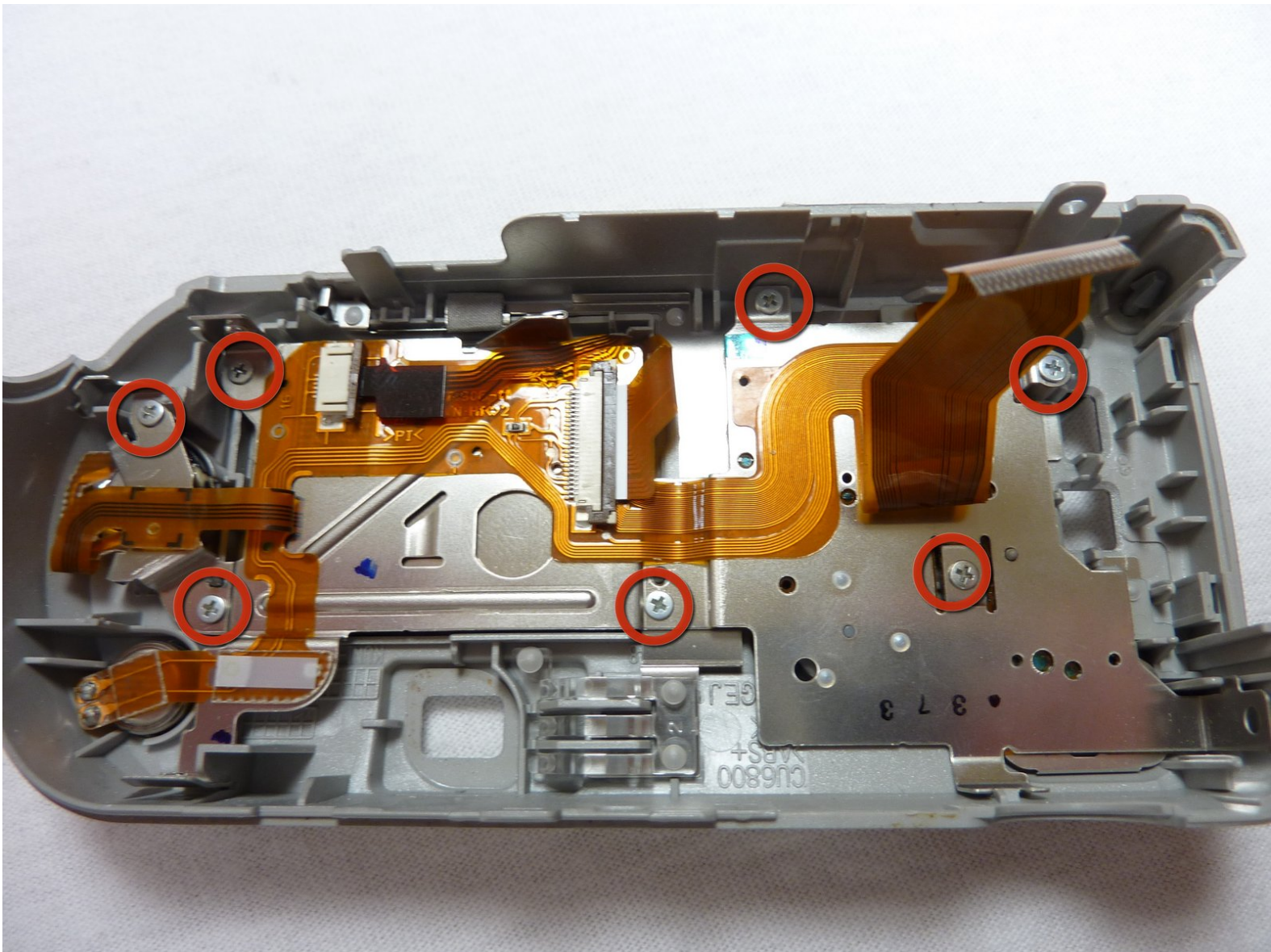




# Sony Cyber-shot DSC-P52 LCD Replacement

Replacing the LCD on the back of the camera.

Written By: Mark



## INTRODUCTION

The LCD should be checked if the screen is blank or broken.



### TOOLS:

- [Phillips #0 Screwdriver](#) (1)



### PARTS:

- [Potential replacement LCD](#) (1)

## Step 1 — Outer Case



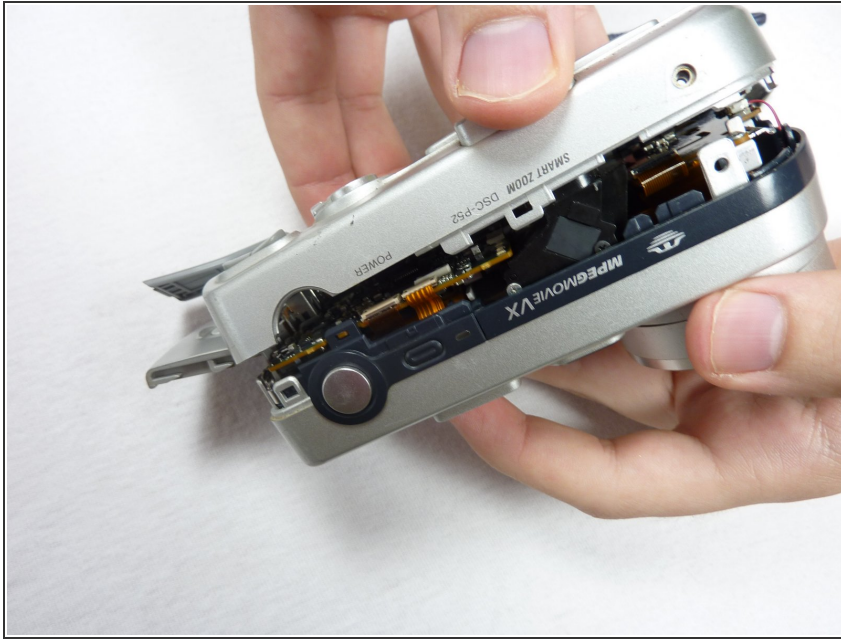
- Open the battery compartment and remove the batteries.
- Remove all of the visible screws on the outside of the case.
- ① There should be three of them that are all easily located.

## Step 2



- Open the memory card compartment.
- Remove the screw next to the memory card slot.

## Step 3



- Pull apart the front and back cover pieces carefully.
- ⓘ The front cover should come completely free with little effort.
- ⓘ The back cover will still be attached to the circuit board.

## Step 4



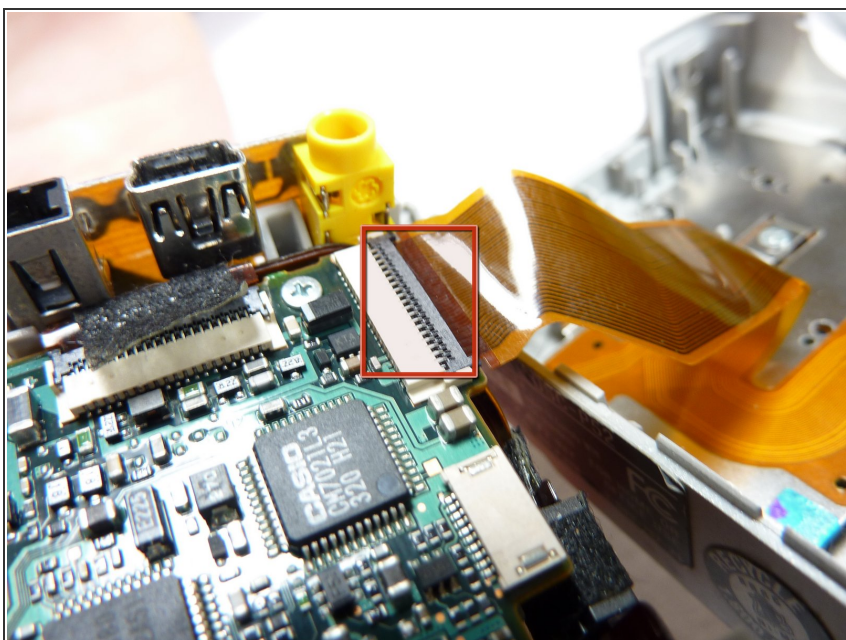
- Simultaneously unclip all of the clips holding in the circuitry. Remove the back case.
- ⓘ The circuitry will still be connected to the back case by ribbon cables.

## Step 5



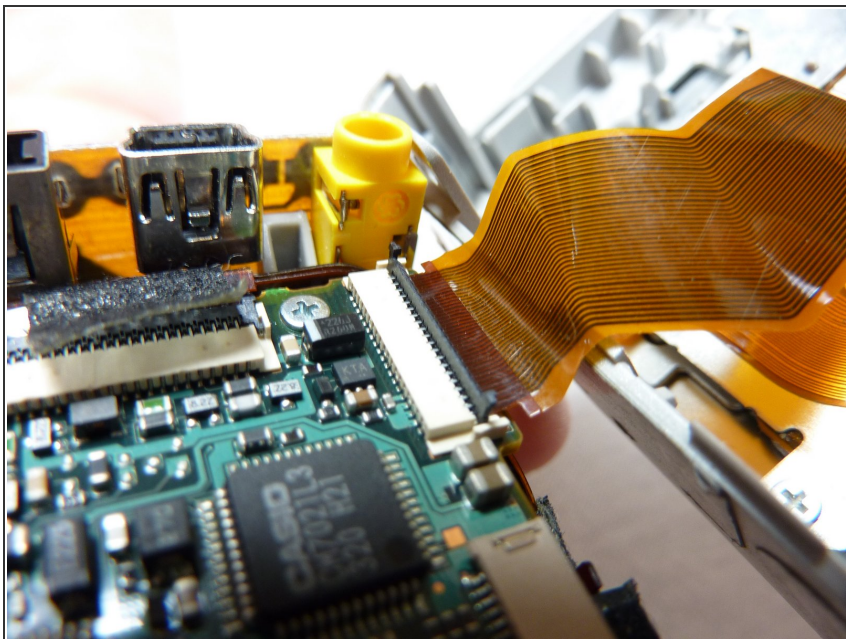
- Open the case as shown.

## Step 6



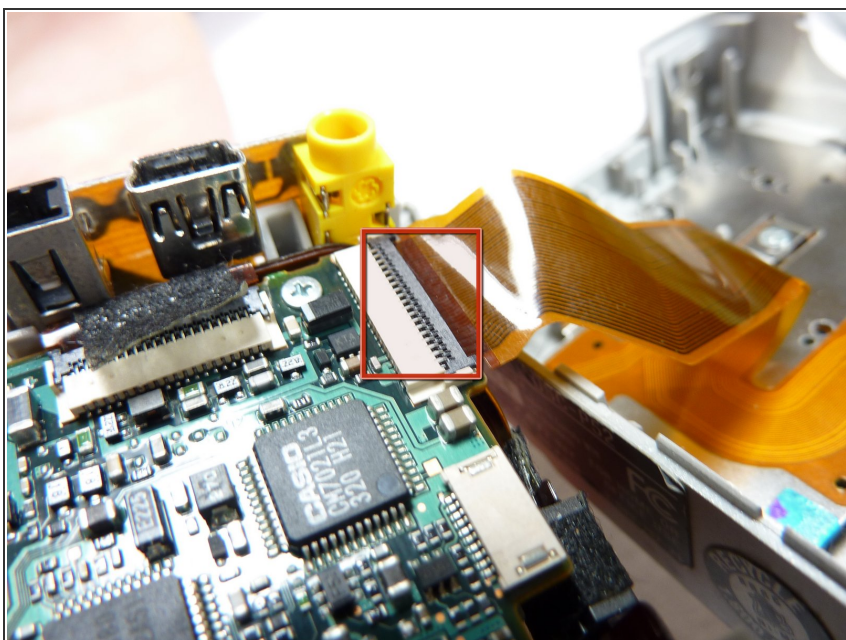
- Unclip the clip holding the ribbon cable in.
- ⓘ Other ribbon cables might not have a clips.

## Step 7



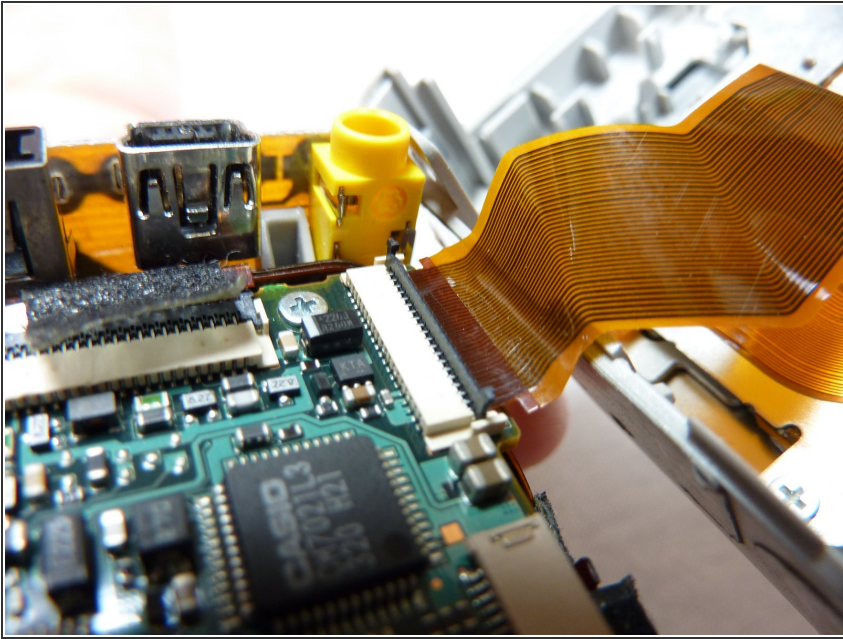
- Pull the ribbon cable out.

## Step 8 — Sony Cyber-shot DSC-P52 Removing Ribbon Cables



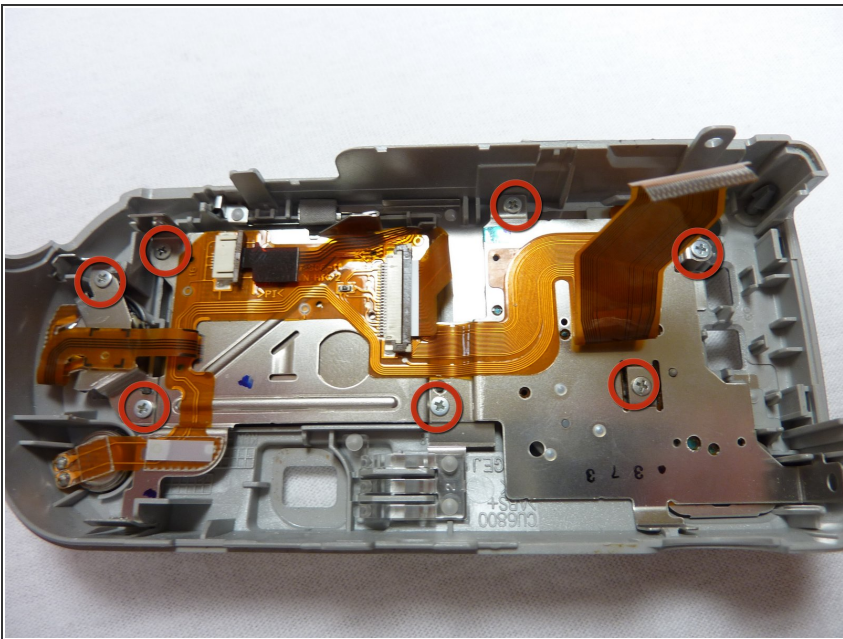
- Unclip the ribbon cable shown the in picture.
- ⓘ Some ribbon cables do not have a clip holding them in.

## Step 9



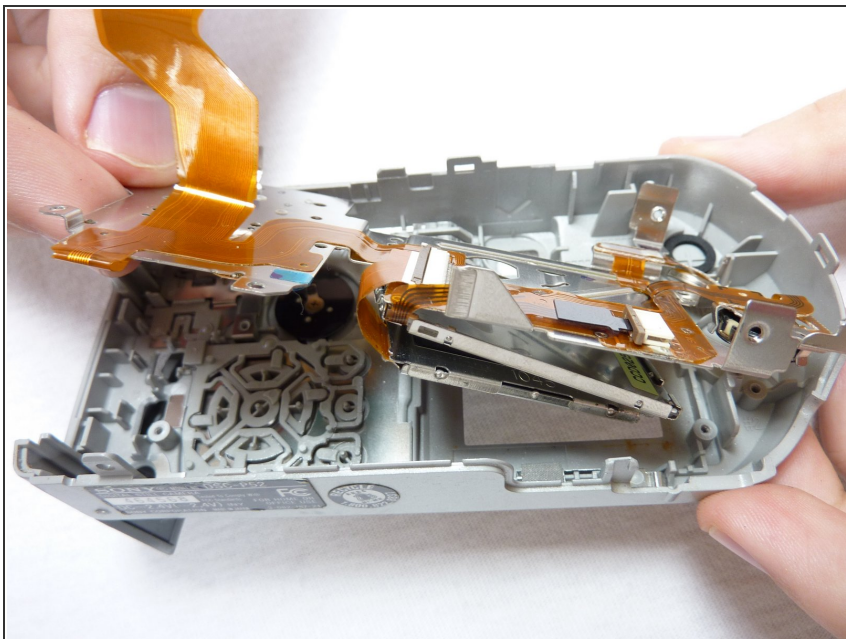
- Pull the ribbon cable out.

## Step 10 — LCD



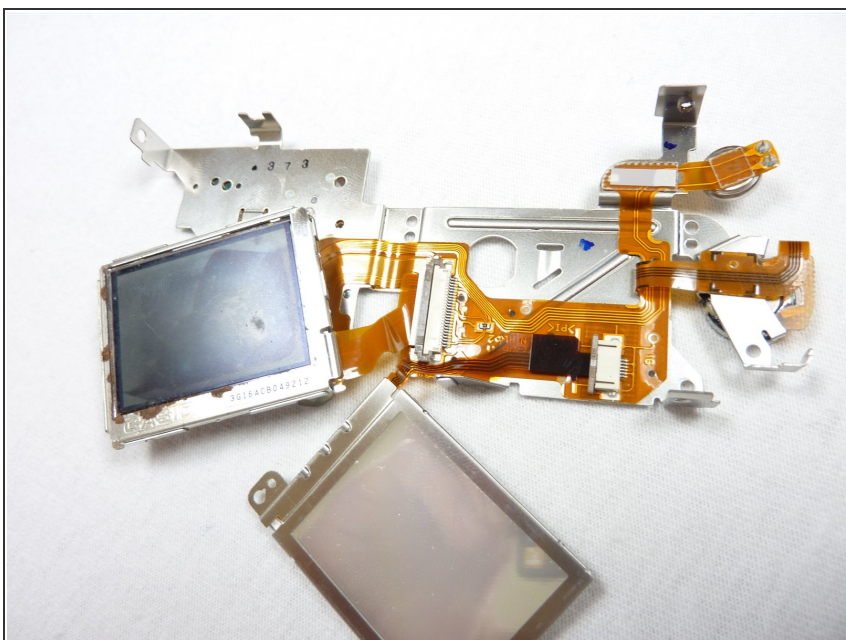
- Remove 7 Screws to remove plate and expose LCD screen.

## Step 11



- Remove LCD plate to expose LCD components and ribbon cables

## Step 12



- Check connection of LCD to cables
- If cables are intact, disconnect cables and replace LCD with new part

## Step 13



- Repeat steps in reverse order to reassemble the camera

To reassemble your device, follow these instructions in reverse order.