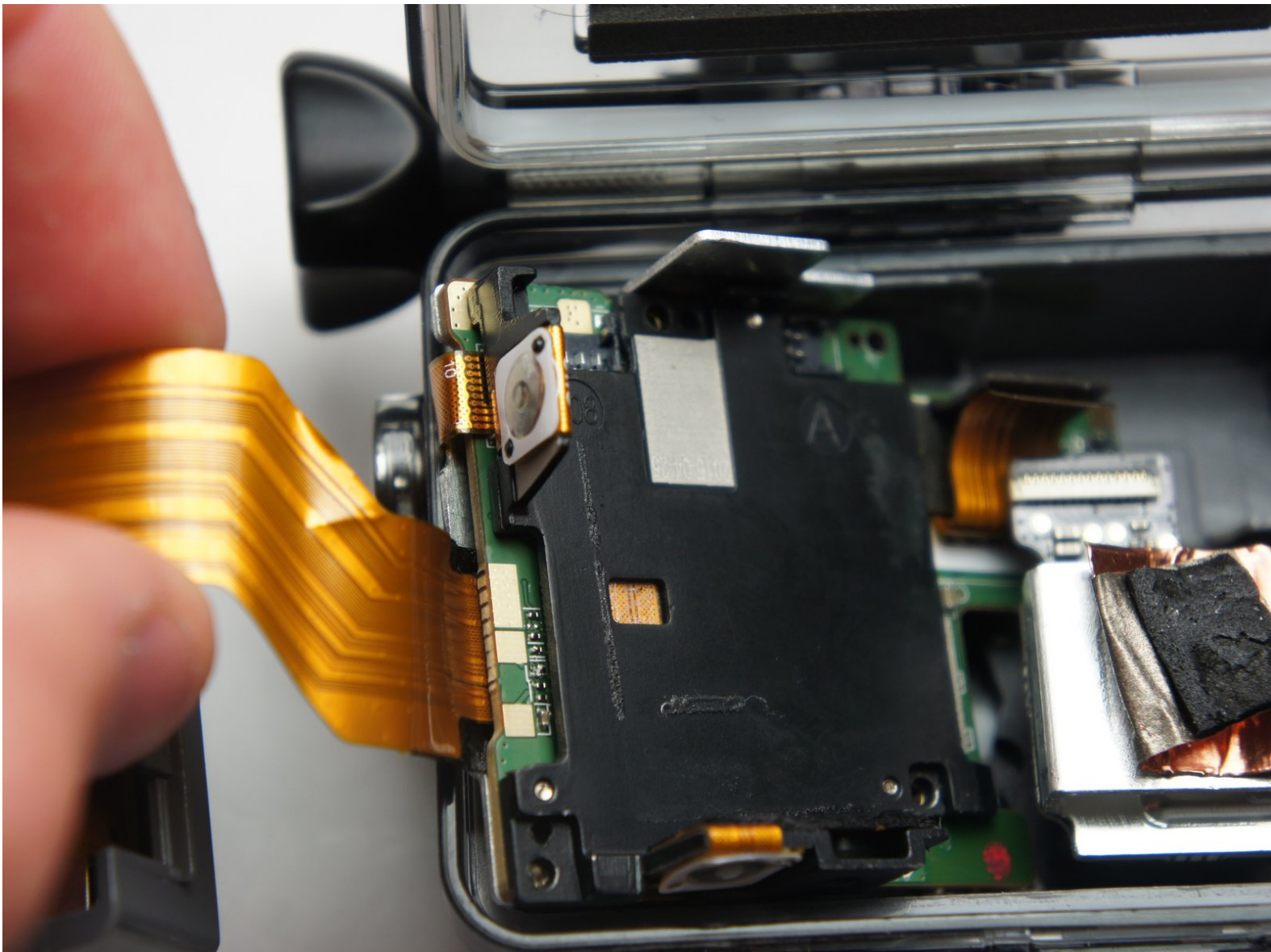




GoPro Hero+ LCD Motherboard Replacement

This guide will help you access and replace a faulty motherboard.

Written By: Matthew Tinkey



INTRODUCTION

Use this guide to replace the motherboard in your GoPro Hero+ LCD.



TOOLS:

- [Metal Spudger Set](#) (1)
- [iFixit Opening Tools](#) (1)
- [Tweezers](#) (1)
- [Phillips #00 Screwdriver](#) (1)
- [Phillips #000 Screwdriver](#) (1)



PARTS:

- [GoPro Hero+ LCD Motherboard](#) (1)
- [GoPro Hero+ LCD Shutter & Settings Button Assembly](#) (1)

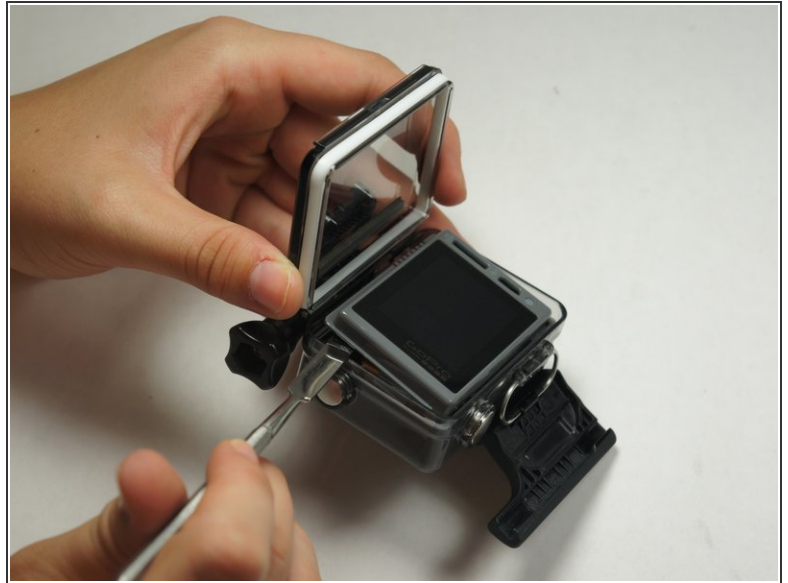
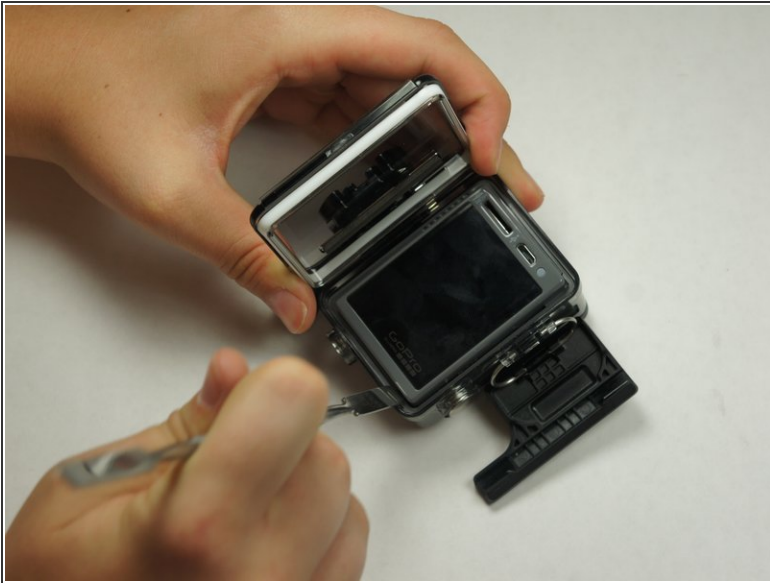
Step 1 — Back Panel



 Be sure to power off the GoPro before you start disassembly.

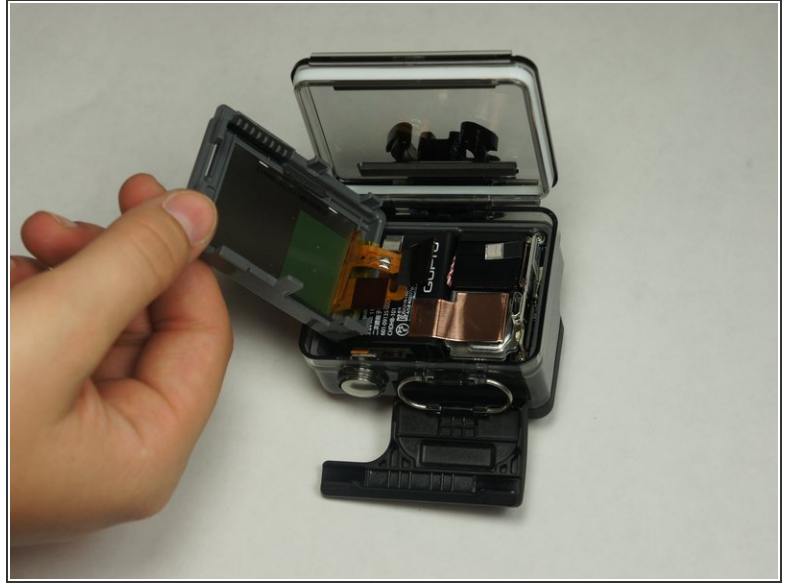
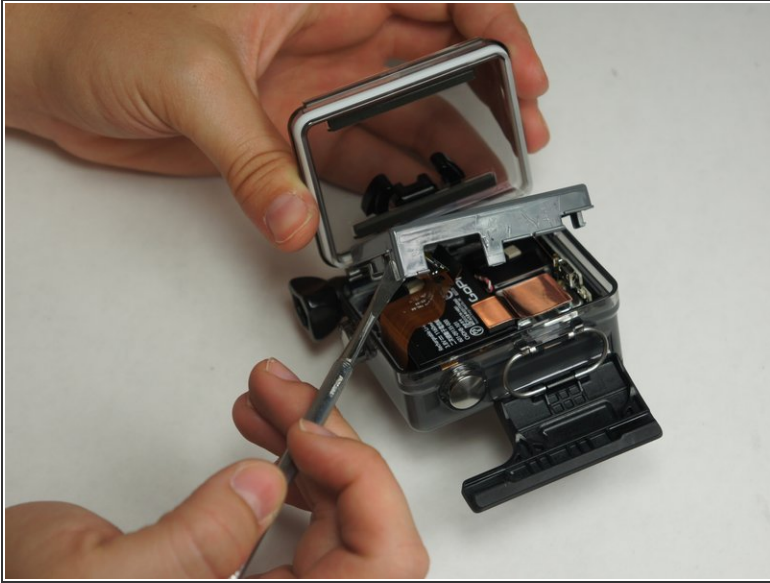
- Pop up and pull back on the clip to remove the screen cover and expose the back panel with the touchscreen.

Step 2




- Use the metal spudger to pry around the perimeter of the panel.
- Pry the panel upwards by inserting the metal spudger into the corner crease between the panel and camera shell.

Step 3




- Pry around the panel to ensure it is not attached to the device.
- Move the panel to the side so you can access the internal components.

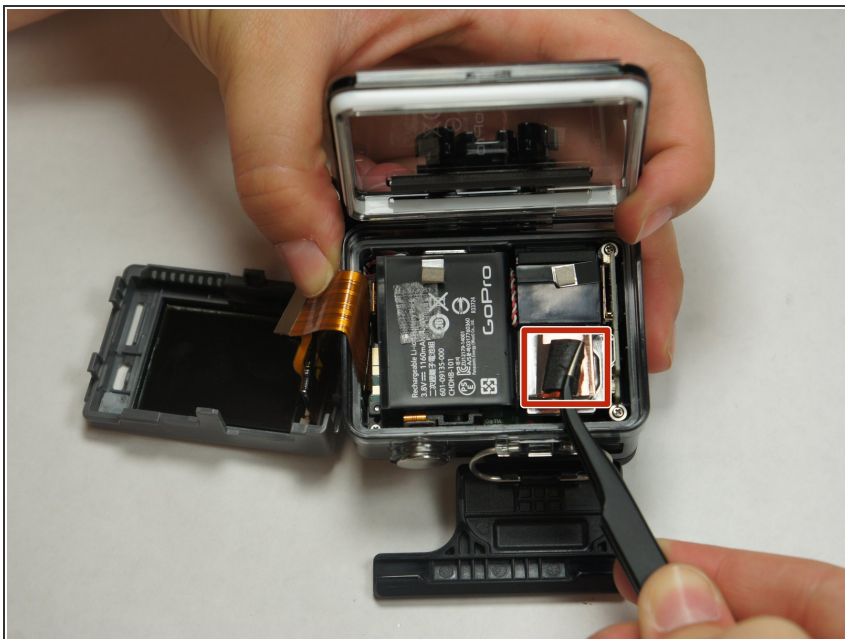
 The panel is still attached to the rest of the device with a ribbon cable, so be sure to not tear or damage the cable.

Step 4 — Battery



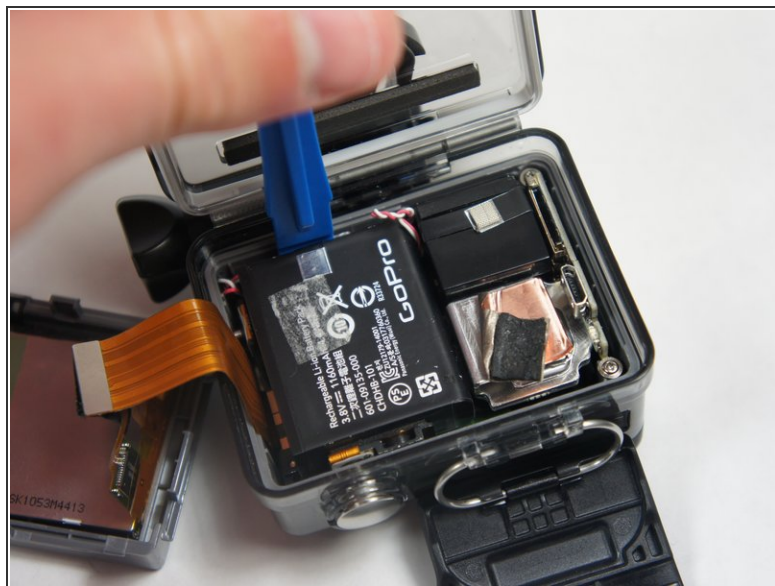
- Peel back the rear panel ribbon cable that is adhered to the battery until it is completely separated from the battery.
-  Be careful of metal contacts on strip; they can be sharp.

Step 5



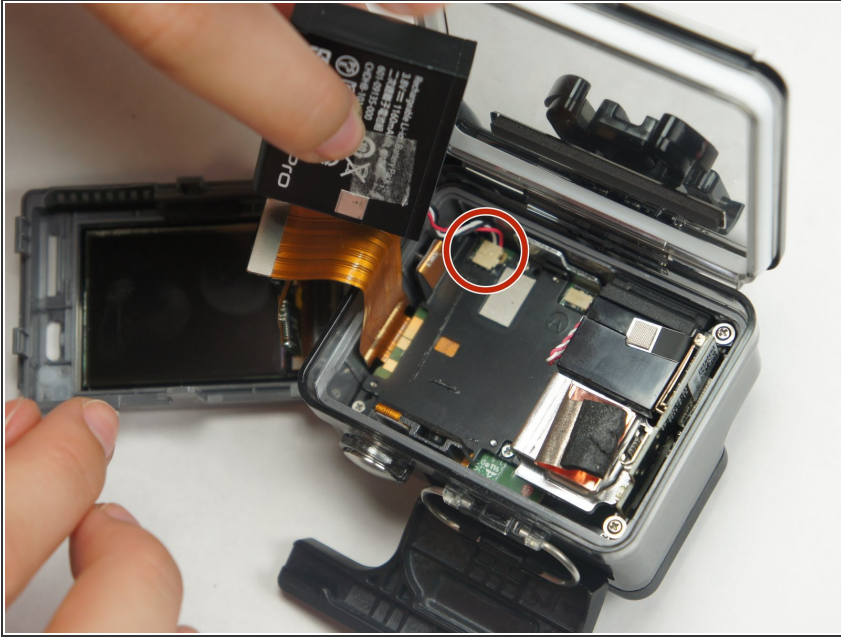
- Using tweezers, peel off the copper tape on the right side of the battery.

Step 6



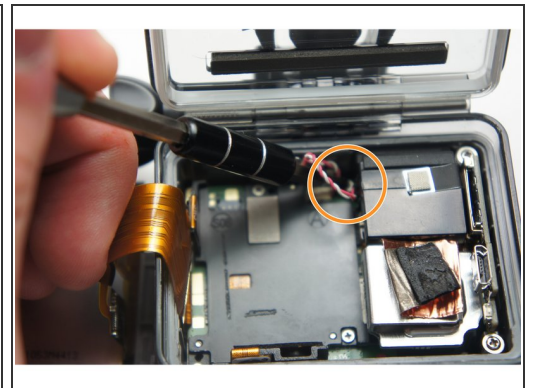
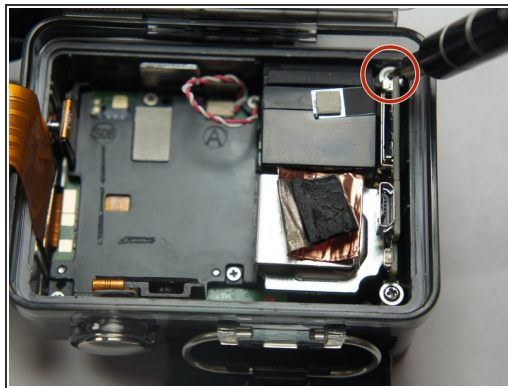
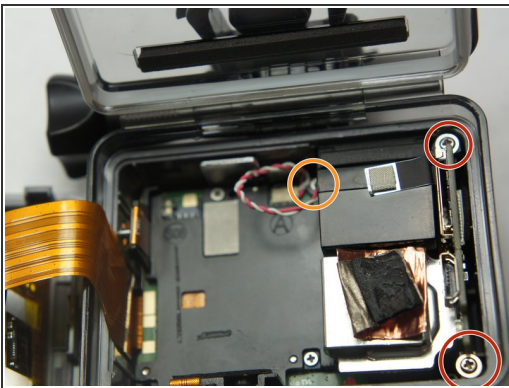
- Place the plastic opening tool at one of the edges of the battery then pry until the battery is removed from the GoPro.

Step 7



- Use a pair of tweezers to disconnect the battery connector from the motherboard.
- Gently pull the battery off the motherboard. Pulling vertically off the motherboard will give a clean release.

Step 8 — MicroSD/Micro USB Port Assembly



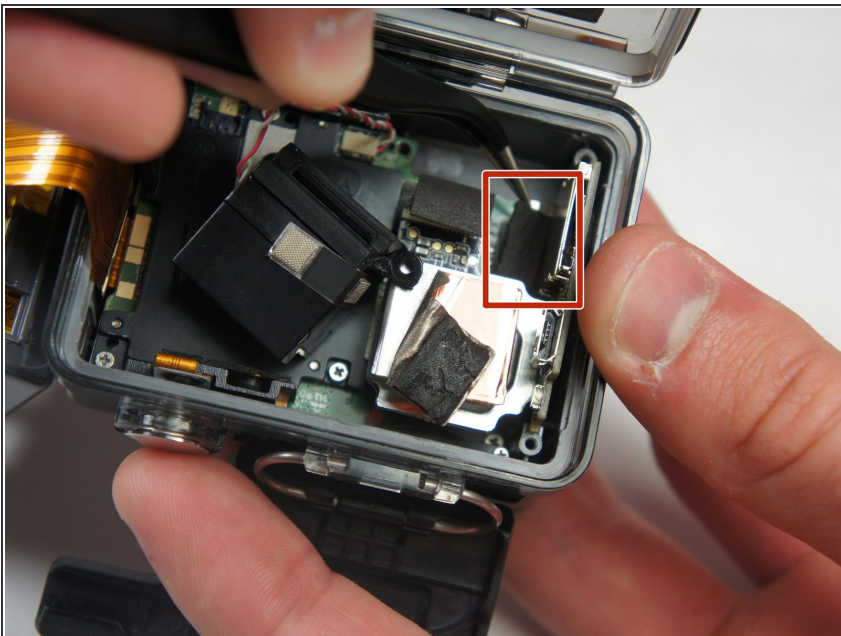
- Remove the two 6 mm Phillips #00 screws.
- Remove the single 4 mm Phillips #000 screws.

Step 9



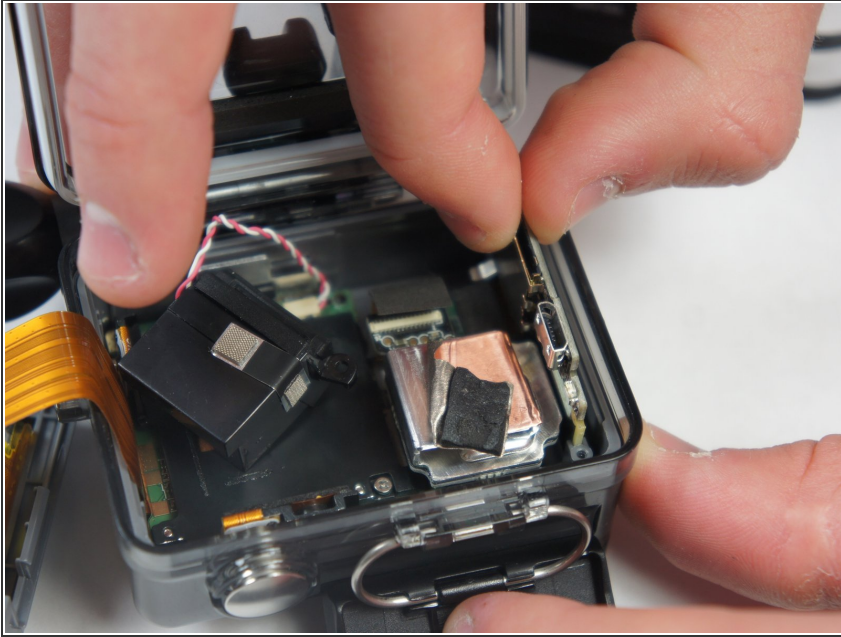
- Remove the image sensor from the camera.
- ⓘ You do not have to unplug the black box to remove the USB/SD chip.

Step 10



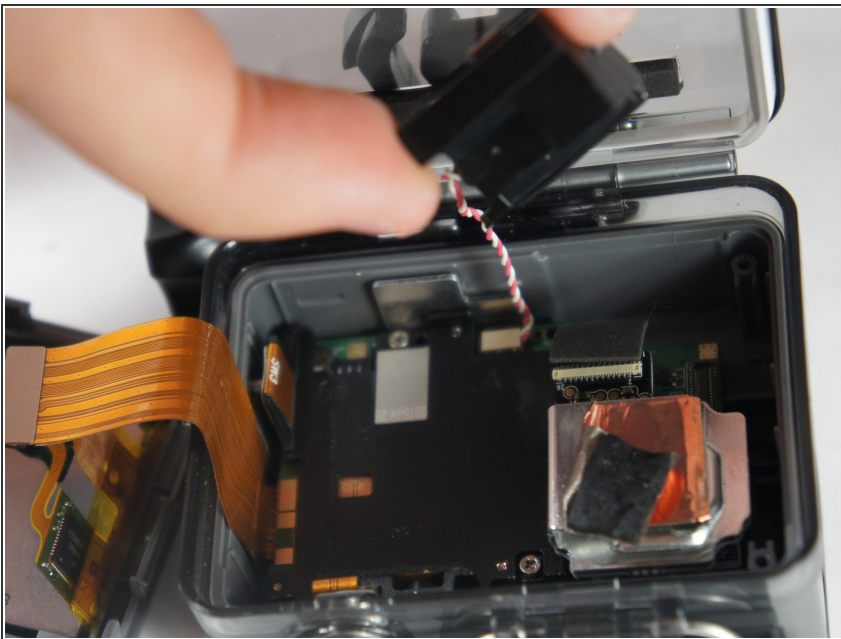
- Grab the edge of the ribbon cable with the tweezers and gently pull until the cable is disconnected from the motherboard.
- ⚠ Be careful when removing the ribbon cable. You must pull gently or you can rip the ribbon off of its contacts.

Step 11



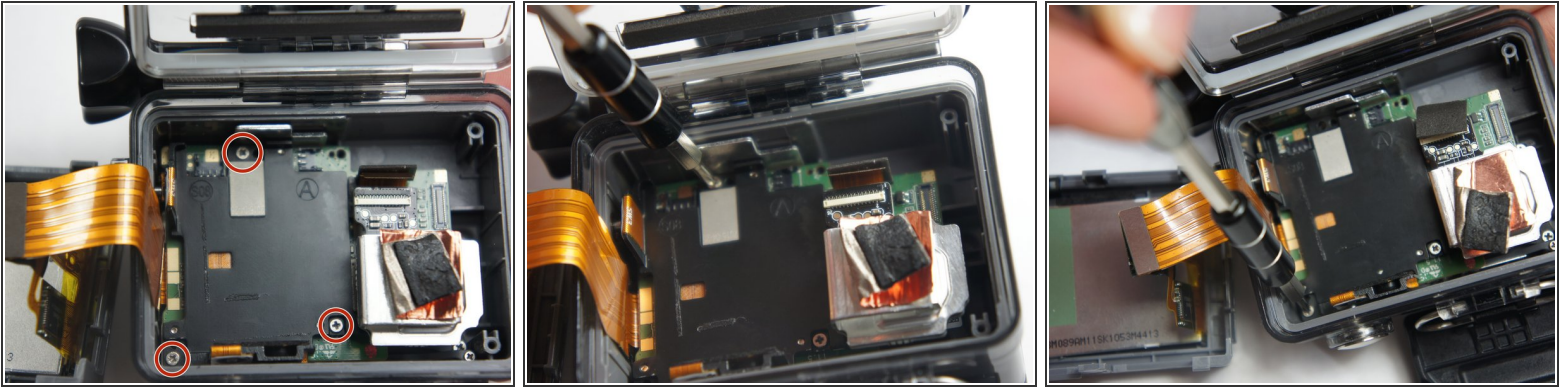
- Gently lift the microSD/Micro USB assembly up and out of the device.

Step 12 — Image Sensor



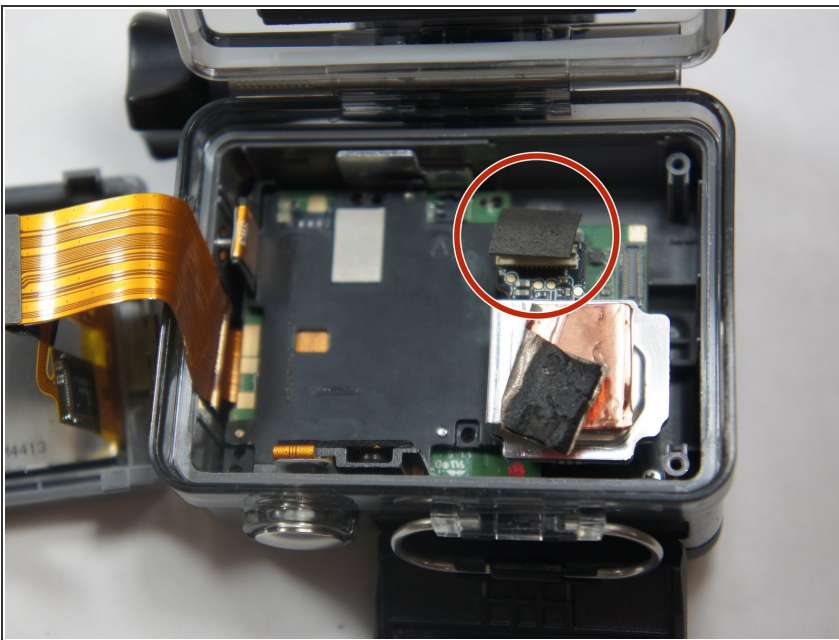
- Use your fingers and gently pull out the sensor from the motherboard by slowly and gradually pulling up on the image sensor box.
- ⚠ Do not yank on the image sensor, it can rip out the wiring or damage the motherboard.

Step 13 — Motherboard



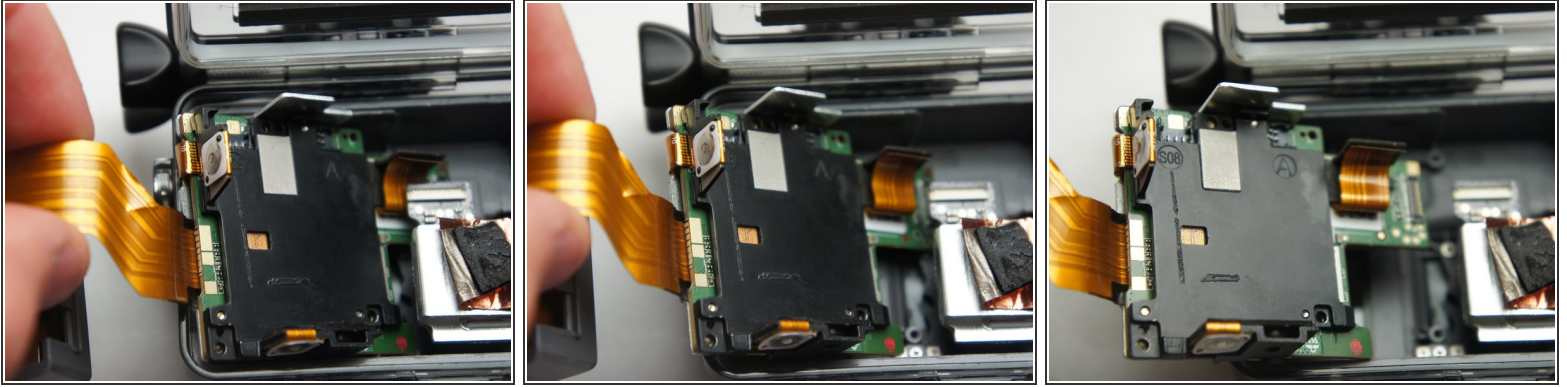
- Remove the three 4 mm Phillips #000 screws securing the motherboard.

Step 14



- Use your fingers to gently remove the ribbon connected to the lens.
- ⚠ Be careful when removing the ribbon cable. Pull off gently or you can separate the ribbon from the contacts.

Step 15



- Use your fingers and carefully pull out the motherboard from under the lens. It may take a little bit of adjusting to get it out.

To reassemble your device, follow these instructions in reverse order.