



Eclipse 180BL LCD Screen Cover Replacement

If you have a scratch, crack, or break in the LCD screen cover then this guide is for you! It will help you successfully replace the cover, without bringing further damage to the device.

Written By: Thomas Schwarz



INTRODUCTION

The LCD screen cover is protection for the easily damaged LCD display. This screen cover is vital to the life of your device.



TOOLS:

- [Screwdriver](#) (1)
- [Spudger](#) (1)
- [Clorox Wipes](#) (1)



PARTS:

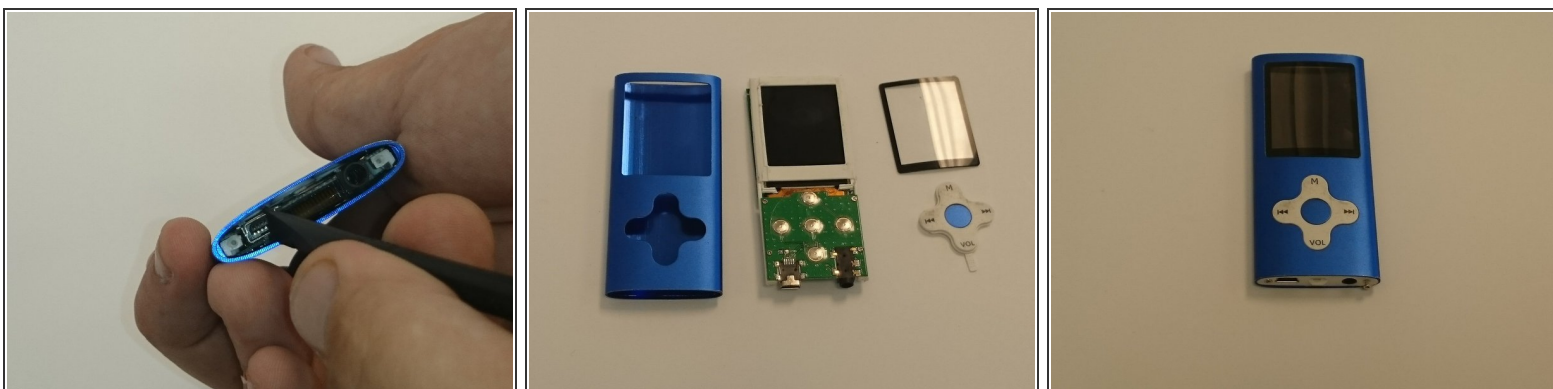
- [Replacement LCD Screen Cover](#) (1)

Step 1 — LCD Screen Cover



- To start, remove the two screws located at the bottom of the device.
- ⓘ The two screws can be removed using the PH00 head located in the iFixit Repair Toolkit.
- ⓘ Both Screws are 1/8 inch in length.
- Remove the case, and with the Spudger, apply force to the USB port to remove the inner component.
- ☑ Be careful, as releasing the tension will cause all parts to become loose and separate.

Step 2



- ⓘ The LCD screen cover is placed into its slot after all the inner components are replaced.
- Get the new screen cover, and carefully place in alignment with the outer shell.
- ⓘ Be sure that the screen fits perfectly, as dust getting in the screen will cause pixels to die.

To reassemble your device, follow these instructions in reverse order.