



# HP Pavilion g6-1b79dx Keyboard Replacement

Removing the keyboard from

Written By: patrickhall



## INTRODUCTION

Components below the laptop need to be removed before you can detach the keyboard. This is a guide to remove your laptop's keyboard.

---

### TOOLS:

- [Phillips #00 Screwdriver](#) (1)
  - [Spudger](#) (1)
-

## Step 1 — Battery



- Flip the computer so the bottom is facing up with the battery away from you.

⚠ Turn off the computer and disconnect the charger.

## Step 2



- Slide the battery switch to the left until the battery unlatches from the base of the laptop.



### Step 3



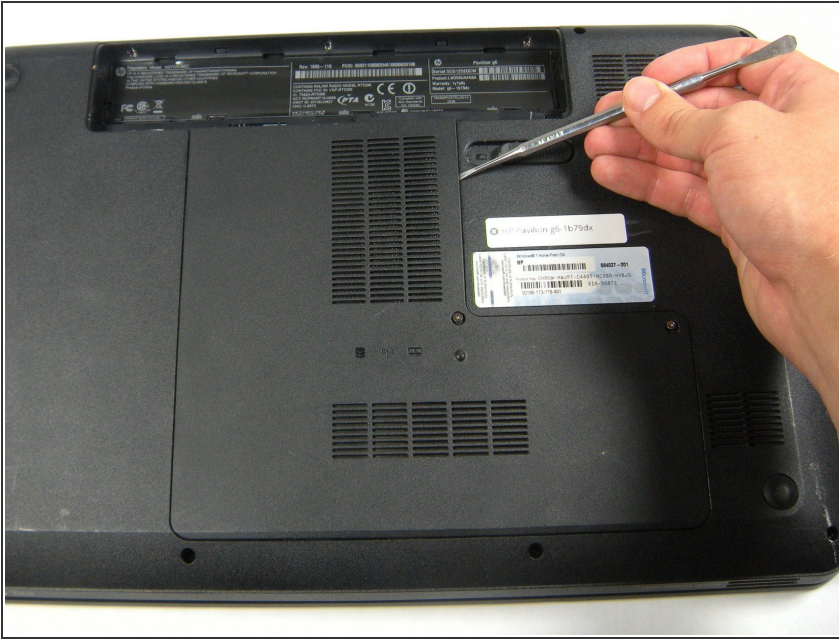
- Lift the battery from its compartment away from the laptop.

### Step 4 — Bottom Panel



- Loosen the two 5.7 mm screws on the bottom panel using a PH00 screwdriver.
- ⚠ The screws do not come out of the panel due to small washers. Do not try to remove the screws completely.

## Step 5

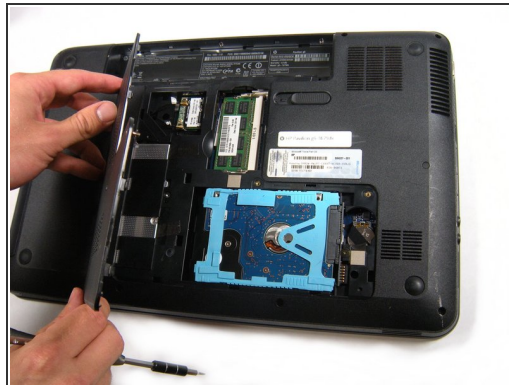


- Use the metal spudger all around the panel to pop it up from the base.

⚠ When working with electronics, it's important to choose a tool that's ESD-safe to avoid accidental damage to the device. The regular black nylon spudger or a plastic opening tool should be used whenever possible.

ⓘ Using your finger is acceptable but not entirely recommended. Be gentle if you choose to use your hands.

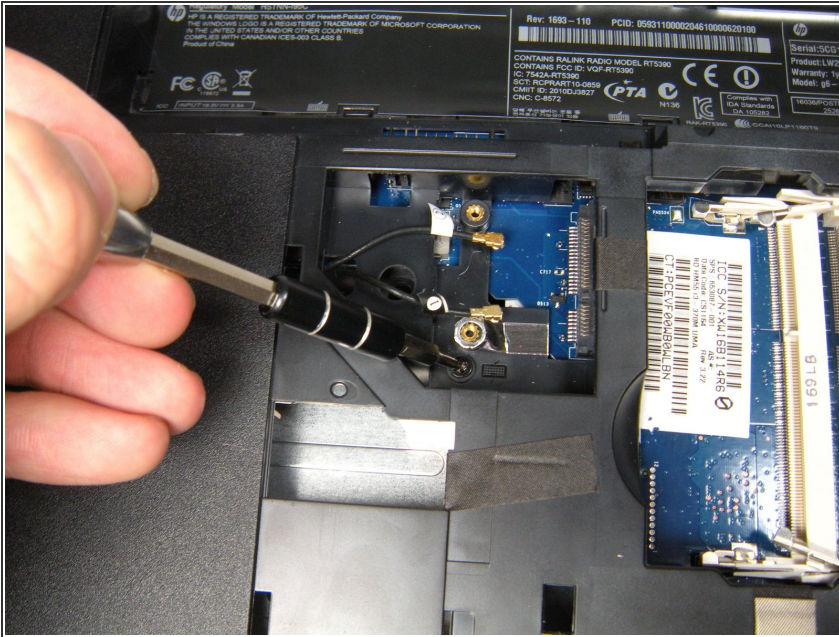
## Step 6



- With your hands, lift the panel completely off the base of the laptop.



## Step 7 — Keyboard



- Using a PH 00 screwdriver, remove the screw located next to the wireless card.
- ⓘ You can remove the wireless card for this process but it is not necessary.
- ⓘ This screw has a small keyboard icon next to it.

## Step 8



- Flip the laptop over and open it.
- ⚠ The components beneath your computer may be loose and fall out when you flip the laptop. Be careful when turning it over.

## Step 9



- Insert a **plastic** spudger or similar pry tool, beneath the keyboard, near the "insert" key, and pop the keyboard up from the laptop.

⚠ When working with electronics, it's important to choose a tool that's ESD-safe to avoid accidental damage to the device. The regular black nylon spudger or a plastic opening tool should be used whenever possible.

- Starting at the opening you just created, run your fingers around the outside of the keyboard separating it from the rest of the computer.

⚠ Only lift the keyboard up a few inches because it is attached to the laptop by a ribbon cable.

## Step 10



- Slightly angle the keyboard back so the ribbon connector underneath it is visible.
- Remove the ribbon cable by using your fingers to pull up and away from the connector.

## Step 11



- With the ribbon cable detached, you can now completely remove the keyboard.

To reassemble your device, follow these instructions in reverse order.