



Insignia Flex 8 NS-15AT08 Battery Replacement

This guide demonstrates how to replace your battery of the tablet.

Written By: Jeremy Anaya






TOOLS:

- [iFixit Opening Tools](#) (1)
-

Step 1 — Back Casing



- Insert a plastic opening tool into the seam between the back casing and the screen to separate the back casing from the tablet.

 You may need to use a metal opening tool for extra prying power, but beware that it can scratch your device or damage the internal components if the tool is inserted too deep.

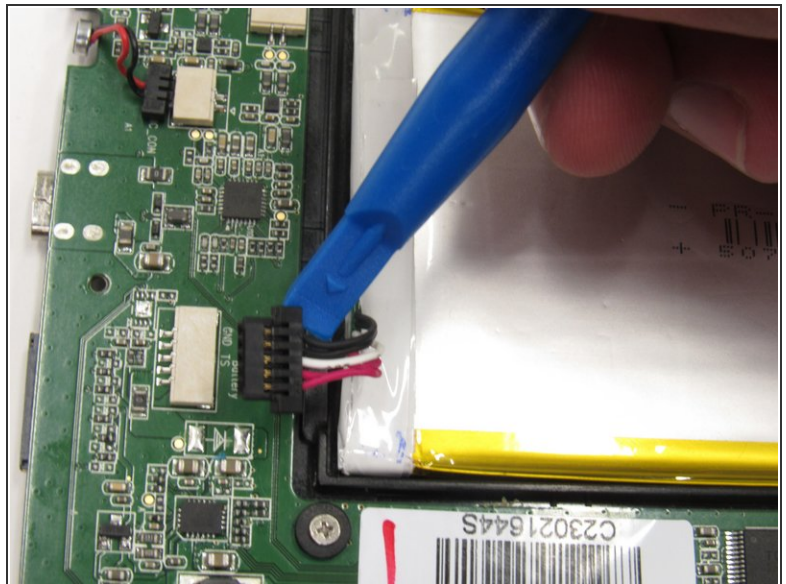
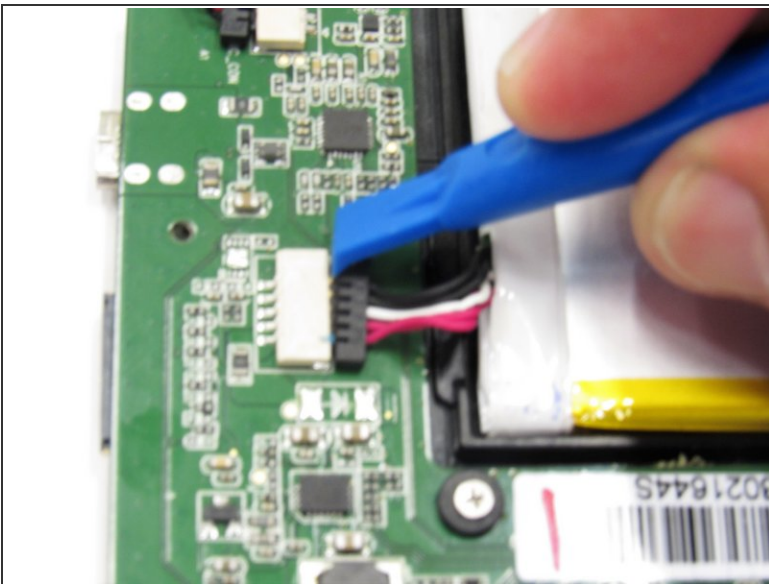
 You will hear the tabs pop as you separate the back casing around the tablet.

Step 2



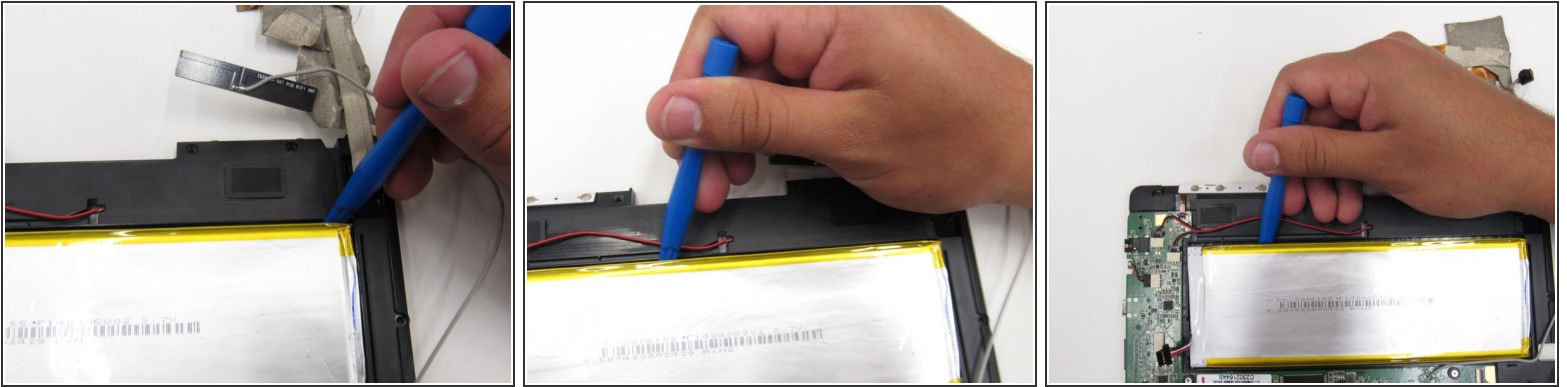
- Lift the back casing away from the rest of the device which should include the exposed circuit board and screen.
- Set the casing aside.

Step 3 — Battery



- Wedge a plastic opening tool in between the male, black module and female, white module to disconnect the wires module from the circuit board.

Step 4



- Use a plastic opening tool to pry the battery from the circuit board by wedging it around the perimeter of the battery.

Step 5



- Remove the battery from the circuit board by lifting it with the spudger or finger.

To reassemble your device, follow these instructions in reverse order.