



# Kurio Xtreme Motherboard Replacement

Replace the motherboard in your Kurio Xtreme.

Written By: Mallory Myers



# INTRODUCTION

Follow this guide to replace the motherboard in your Kurio Xtreme. Before you begin, make sure that you have a soldering iron and know how to use it.

---

## TOOLS:

- [Phillips #000 Screwdriver](#) (1)
  - [iFixit Opening Tools](#) (1)
  - [Soldering Workstation](#) (1)
-

## Step 1 — Back Panel



- Remove the rubber case by beginning to peel from one of the top corners and continue peeling until the cover is completely removed.

## Step 2



- Unscrew the four 4 mm black screws using a Phillips #000 screw driver.

ⓘ There are two screws on each side of the device (four total).

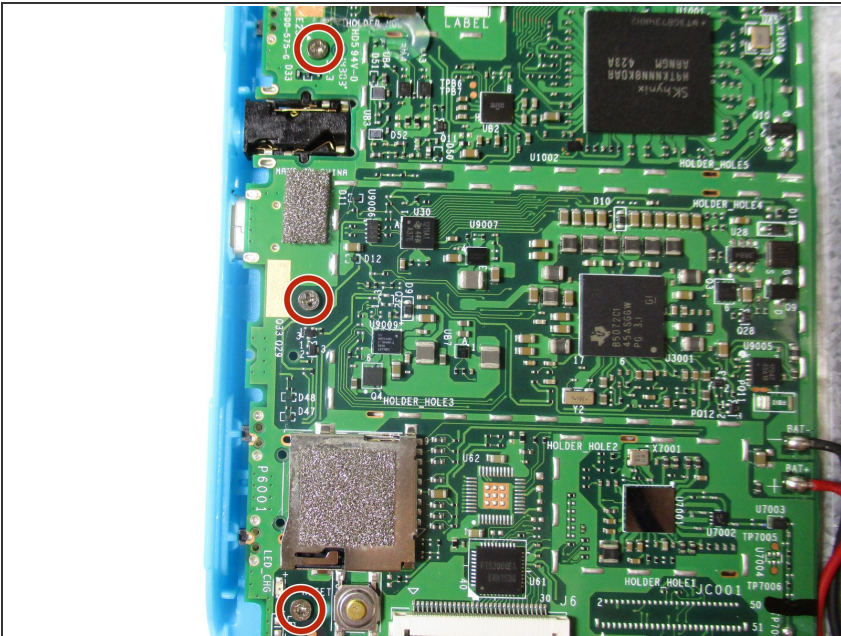


### Step 3



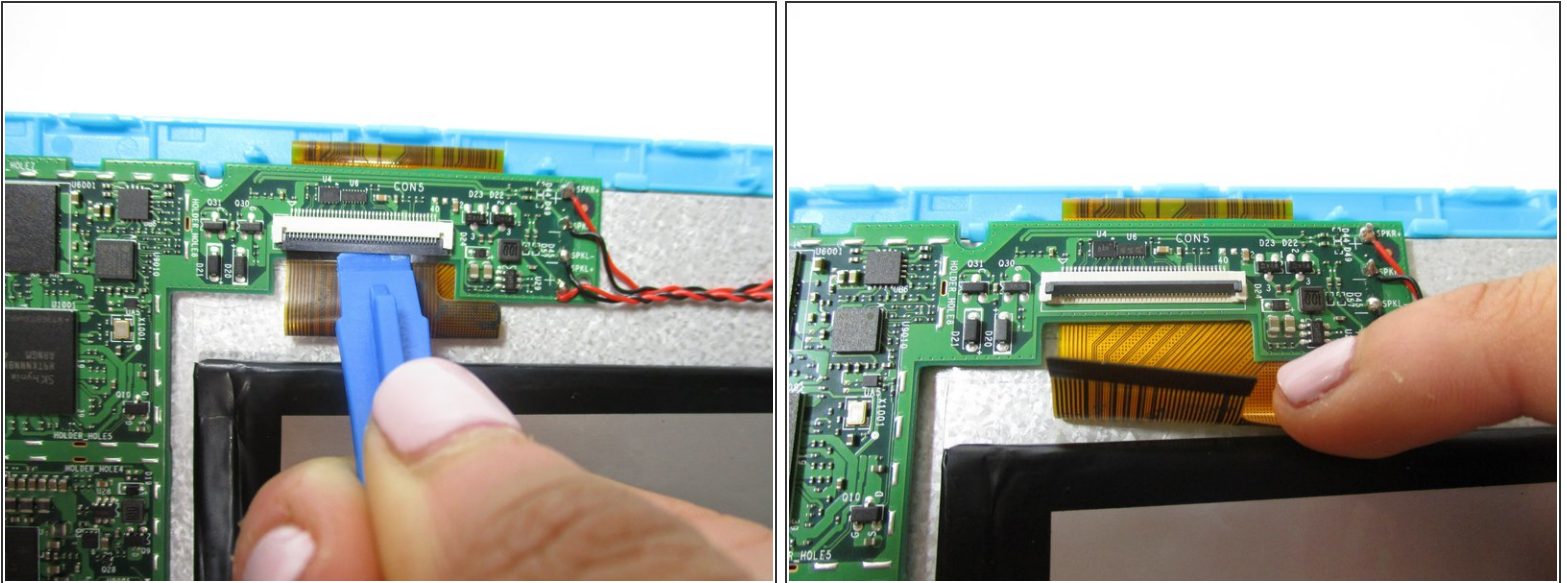
- Insert the plastic opening tool in between the edges of the blue front casing and black back casing.
- Slide the plastic opening tool around the perimeter of the device. This may require that you repeatedly run the opening tool up and down the edges of the device.
- ⚠ Be sure not to break any of the plastic clamps along the edges of the device when removing the back cover.
- Carefully lift the back panel off of the rest of the device.

### Step 4 — Motherboard



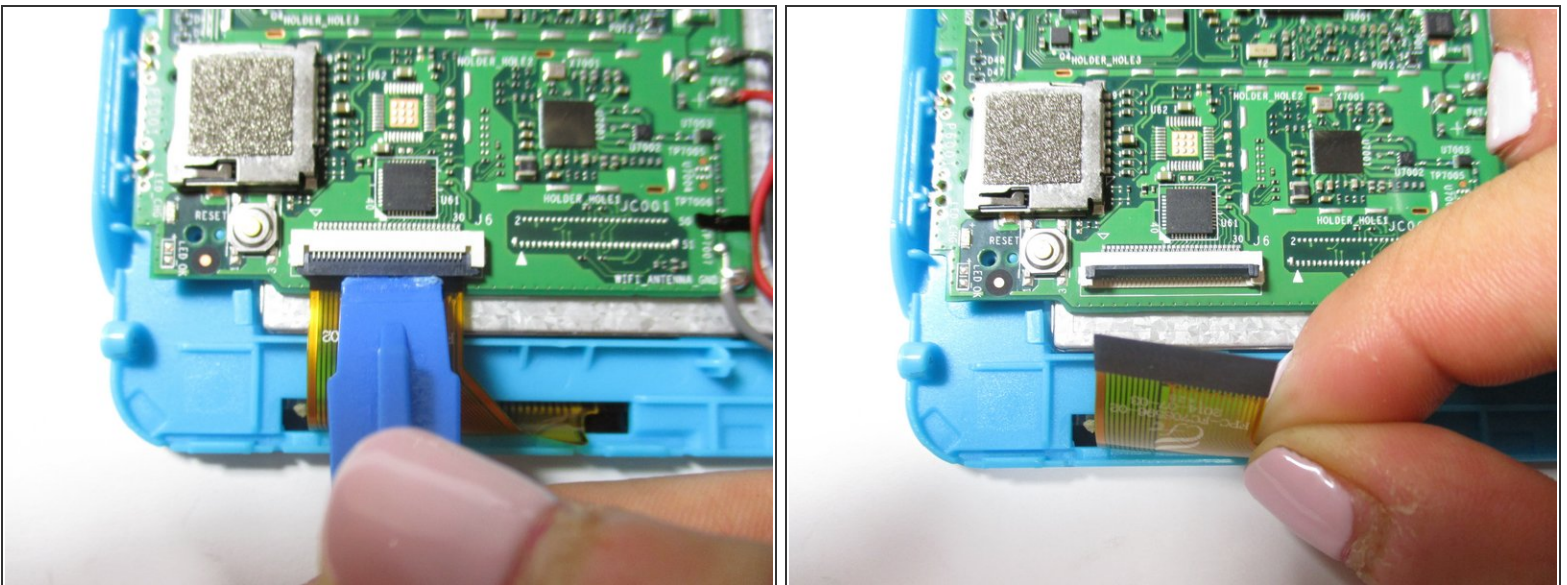
- Unscrew the three 4 mm screws with a Phillips #000 screwdriver.

## Step 5



- Remove the orange data display ribbon wire above the battery by prying open the ZIF connector with the plastic opening tool.

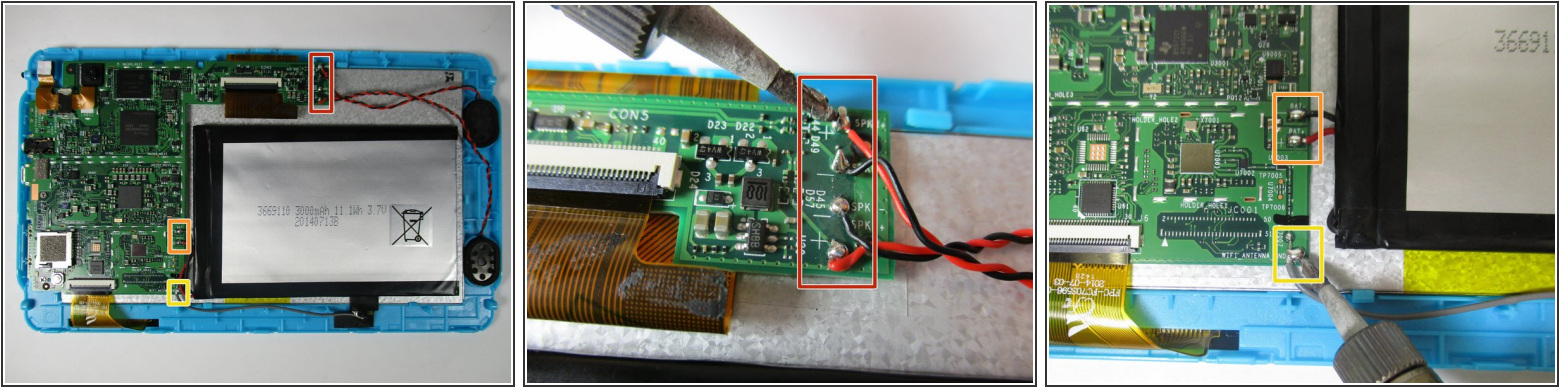
## Step 6



- Remove the orange data display ribbon wire to the left of the battery by prying open the ZIF connector with the plastic opening tool.



## Step 7



- Remove the 7 wires connected to the motherboard by [soldering](#) the ends that connect them to the motherboard.
    - 2 pairs of red and black speaker wires (4 wires total)
    - 1 pair of red and black battery wires (2 wires total)
    - 1 gray ground wire
- ⚠ The soldering iron gets very hot and may injure you if exposed to your skin.

## Step 8



- Remove the motherboard by lifting it out of the casing.

To reassemble your device, follow these instructions in reverse order.