



Sony Alpha A3000 Motherboard Replacement

Step by step instructions for replacing the motherboard which is attached to the memory card dock.

Written By: Leonard Holloman



INTRODUCTION

This guide provided instruction on removing the motherboard and should only be followed if a compatible replacement is available or subsequent repair procedures require its removal.

TOOLS:

- [Phillips #000 Screwdriver](#) (1)
 - [Tweezers](#) (1)
-

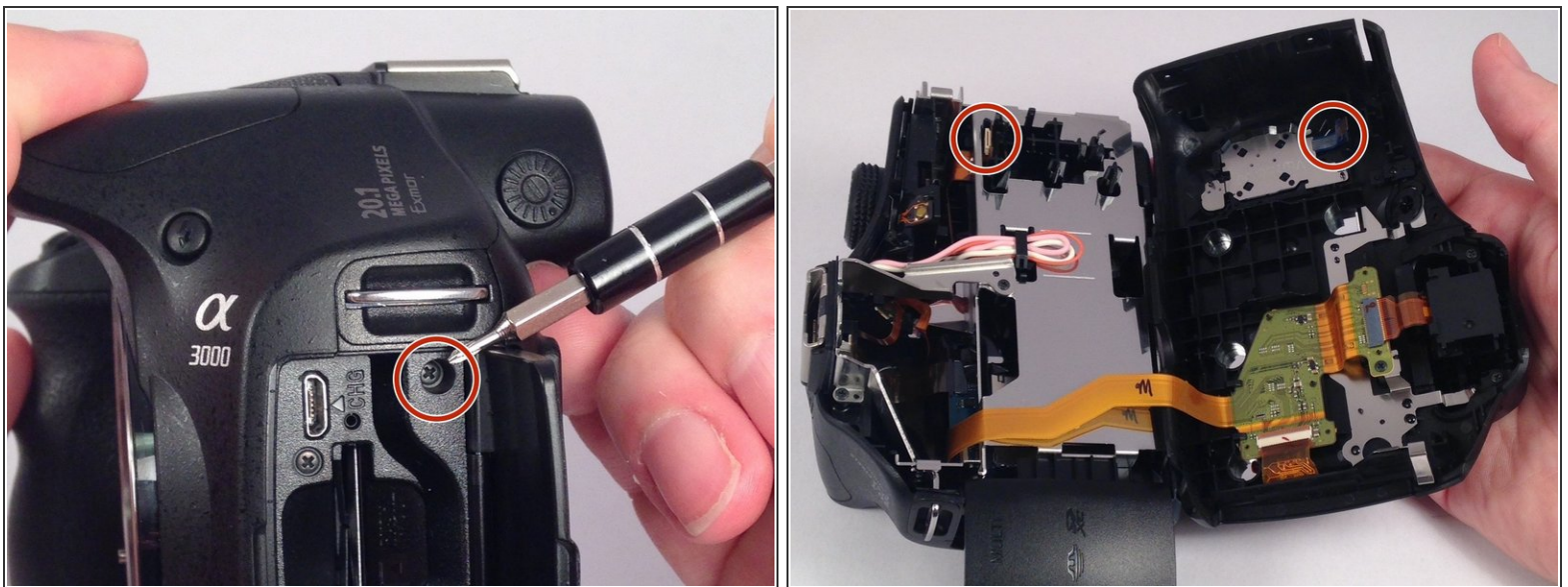
Step 1 — Rear Case



- Remove the seven highlighted screws shown here.

⚠ Screws are teeny tiny, don't lose them!

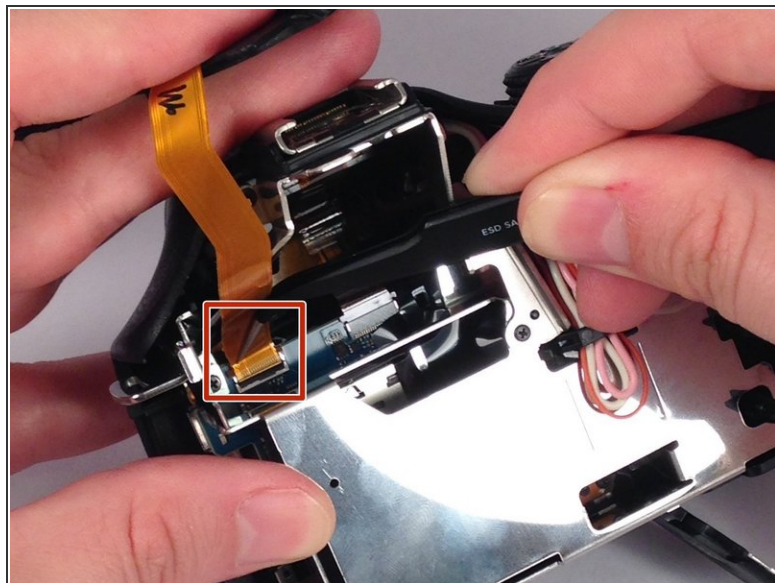
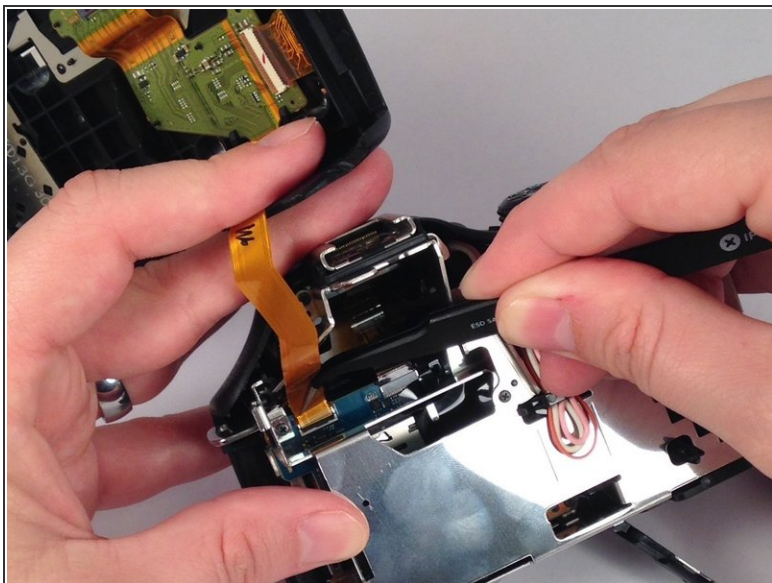
Step 2



- Remove this final screw from the memory card compartment.
- Remove the chassis by pulling the back cover away from the camera.

⚠ Be careful not to damage any of the delicate ribbon cables when removing the chassis.

Step 3



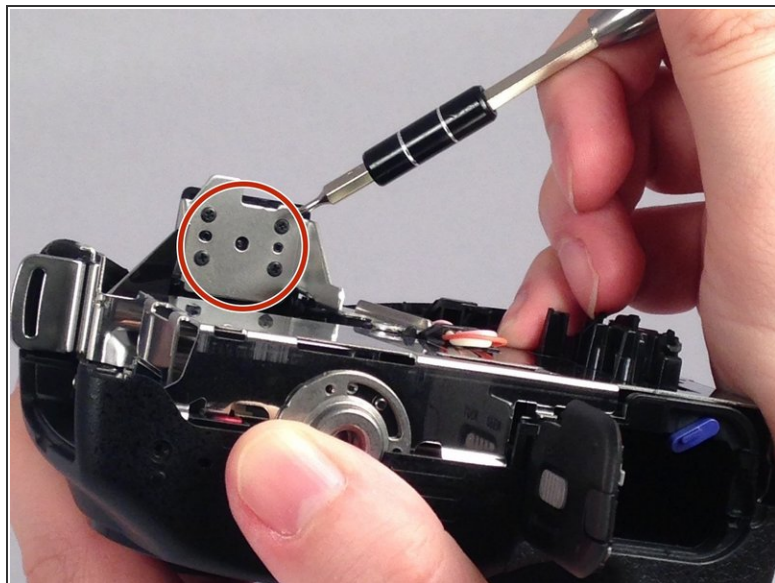
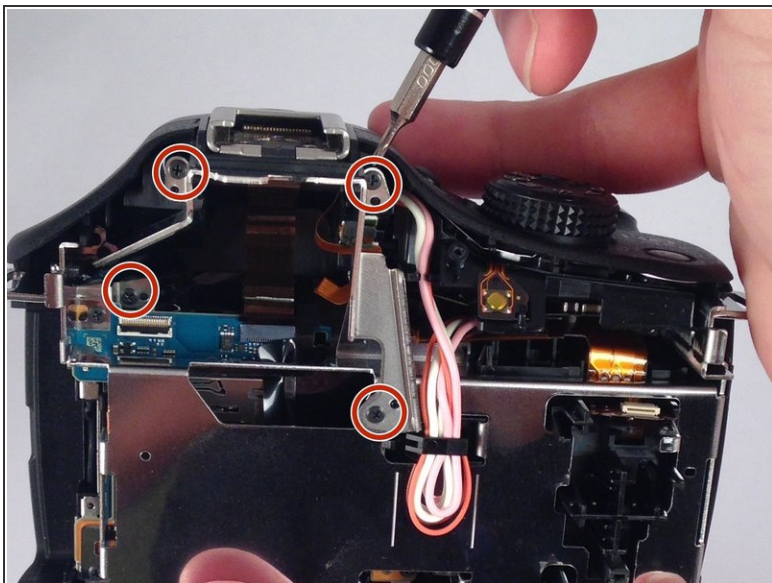
- Gently but forcefully lift up on the parallel cable connecting the two halves of the camera.

Step 4 — Motherboard



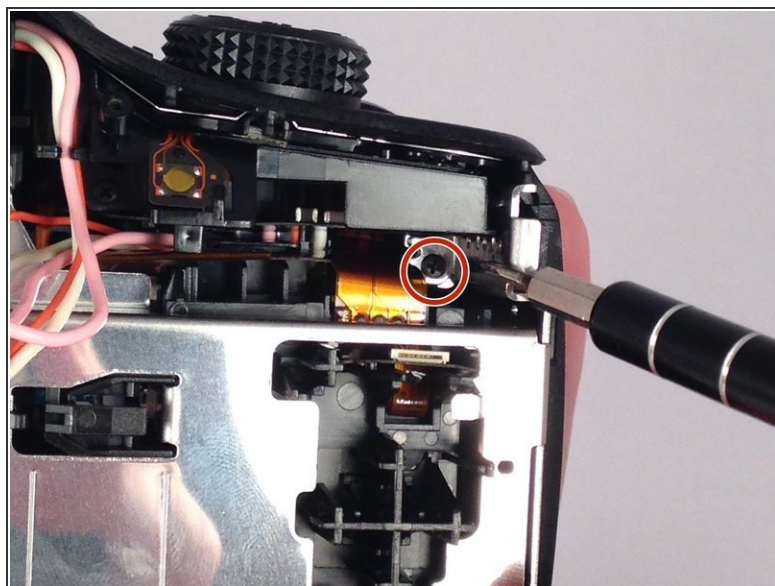
- After removing the backing from the camera. Remove the two final screws in the memory compartment area.
- Detach the facing for the memory dock.

Step 5



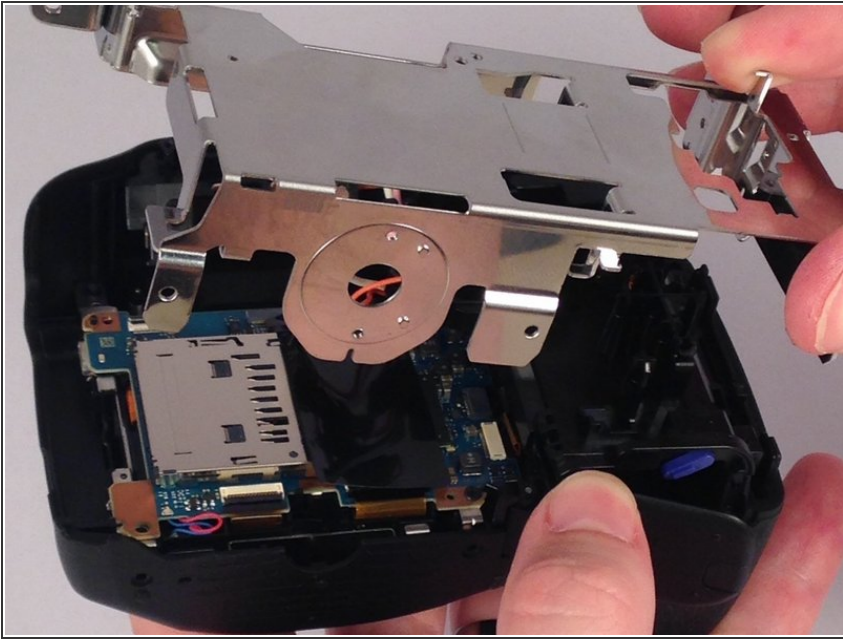
- Remove the eight screws securing the mount for the flash device.

Step 6



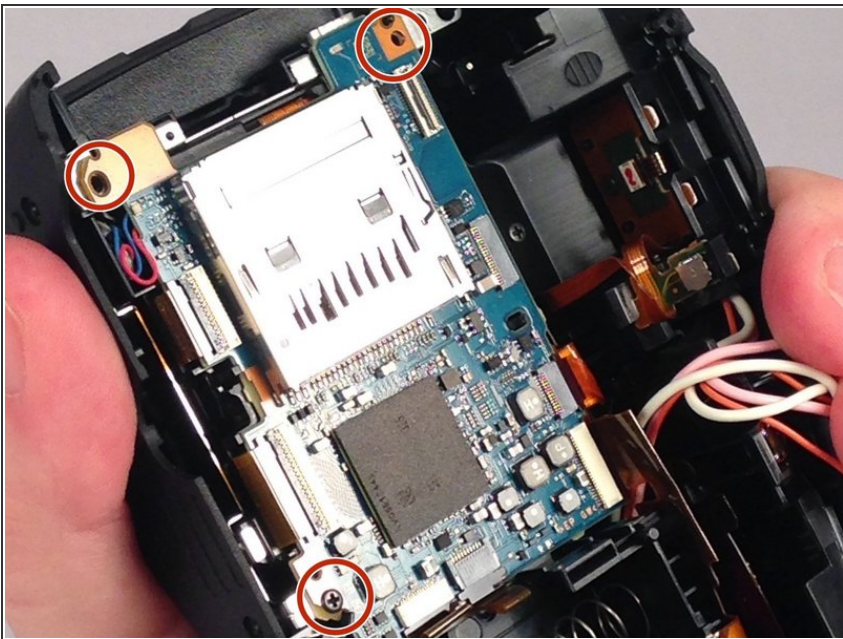
- Remove the three remaining screws holding in the protective metal casing.

Step 7



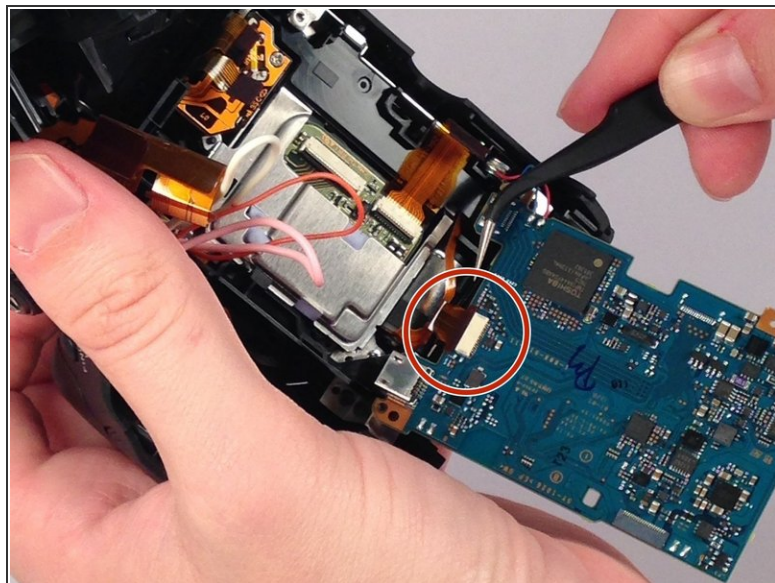
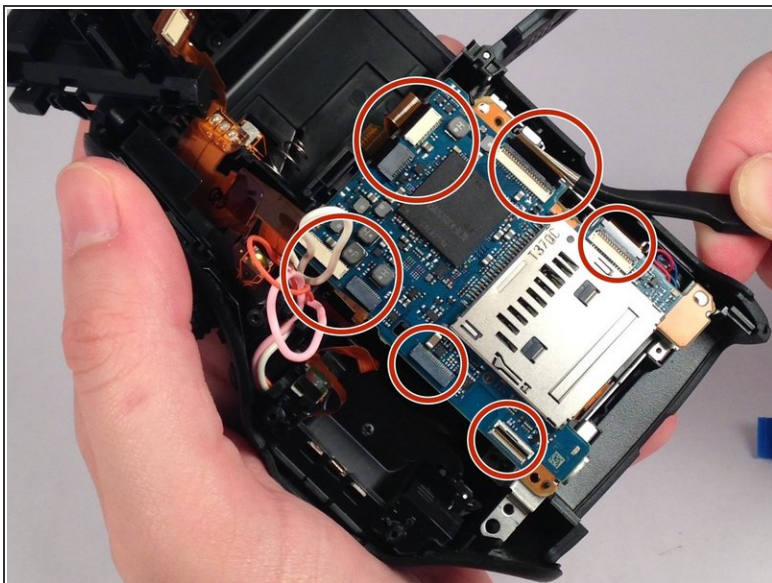
- Remove the metal casing.

Step 8



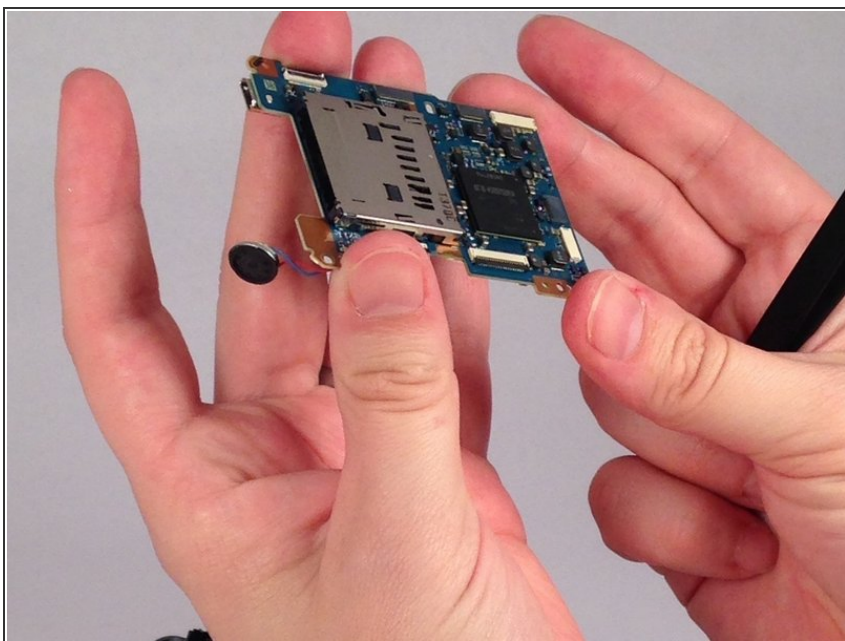
- Remove three screws holding down the motherboard .

Step 9



- Detach the nine serial cables connecting it to the camera body.

Step 10



- Finally remove the motherboard from the casing.

To reassemble your device, follow these instructions in reverse order.