



Grand Neo Plus - Hard Reset, Test Menu, Safe Mode, Developer Options, Secret Codes

Samsung Galaxy Grand Neo Plus 5 Tips & Tricks - Hard Reset, Test Menu, Secret Codes, Safe Mode, Developer Options

Written By: ZFix

Samsung GALAXY Grand Neo Plus 5 Tips & Tricks

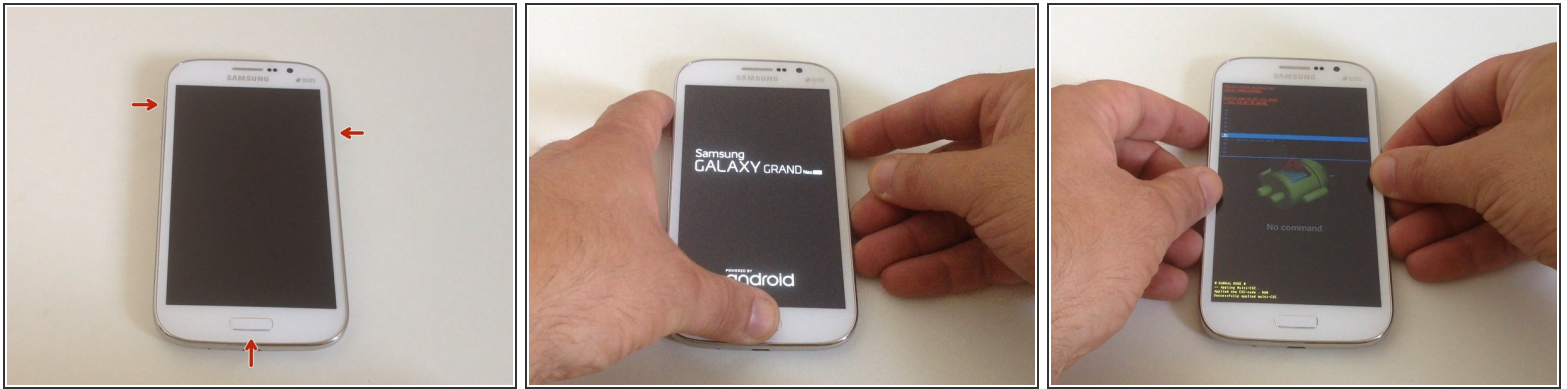


INTRODUCTION

Samsung Galaxy Grand Neo Plus / I9060i - 5 Tips and Tricks.

[video: <https://www.youtube.com/watch?v=J9OLa1mIp0U>]

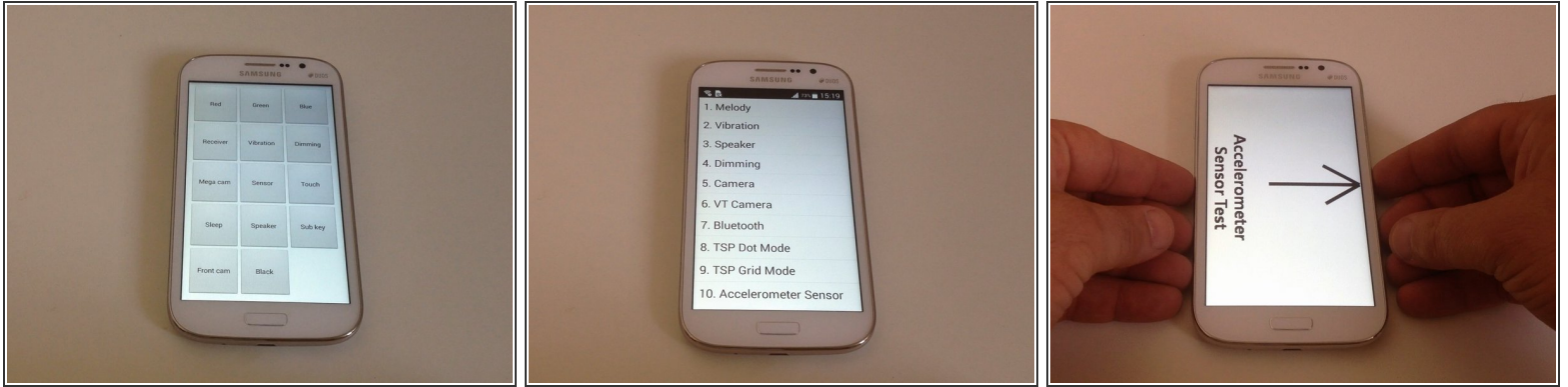
Step 1 — HARD RESET




⚠ Attention!!! This will erase all your personal information (address book, accounts, messages, etc.) and will set the settings to its original state.

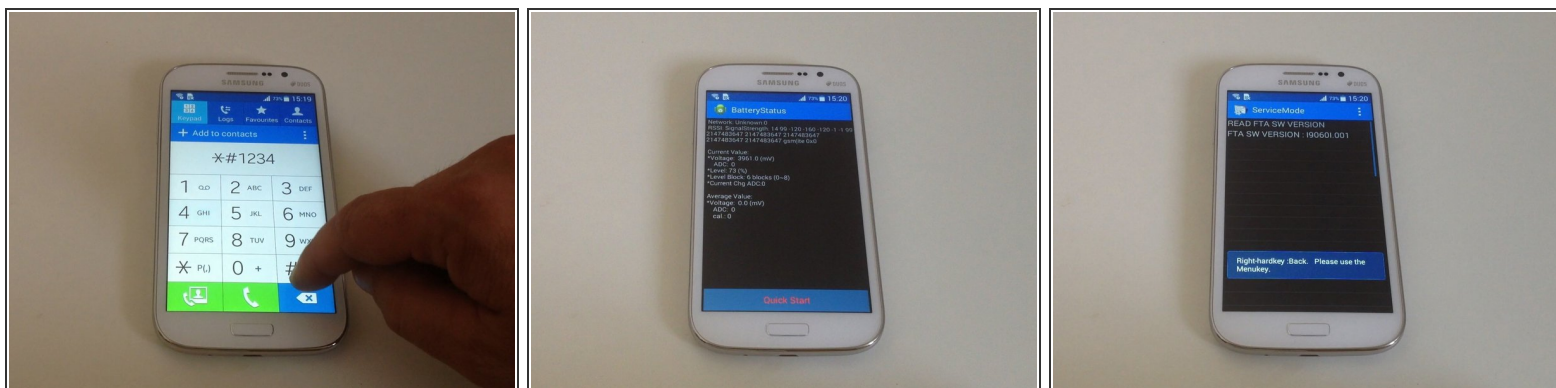
- Switch off the phone.
- Press and hold **Volume Up**, **Home** and **Power** buttons for a long time (15-20 sec.).
- When you see the Galaxy logo release the buttons.
- To navigate through the Android System Recovery menu, use the Volume up/down buttons to scroll up and down and the Power button to confirm selections. Select:
 - - wipe data/factory reset
 - - Yes -- delete all user data
 - - reboot system now.

Step 2 — SERVICE TEST MENU



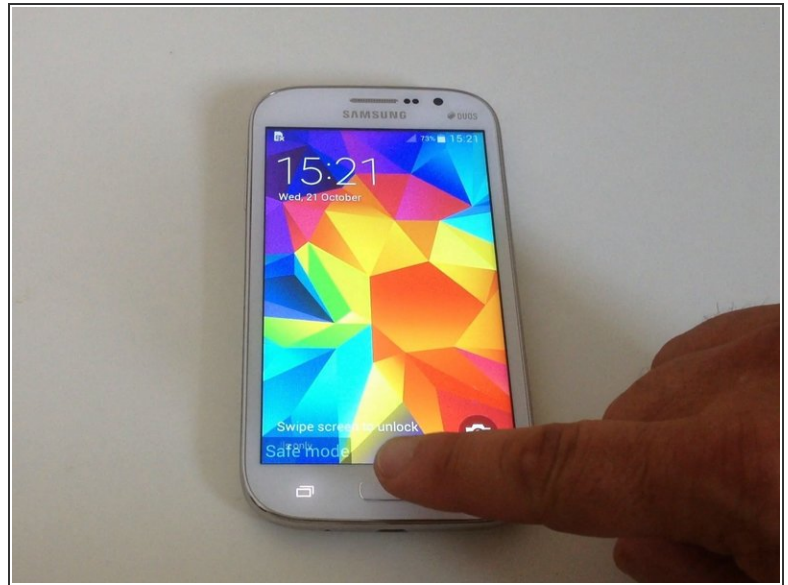
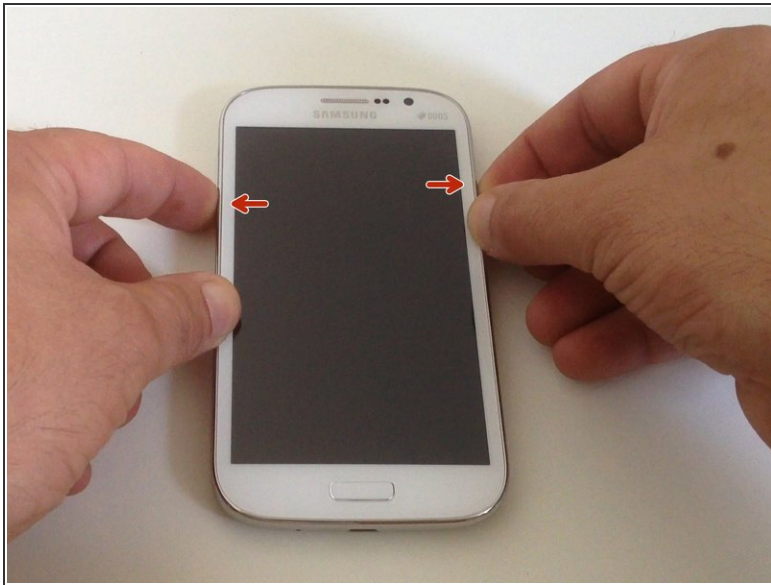
- Hidden Test Menu - lets you troubleshoot hardware issues and check your phone's functionality.
 - • **Method One:** Use this code `*#0*#` to enter the phone into the test menu.
 - • **Method Two:** From the deal app enter `*#7353#`
-  From this menu you can run tests for vibration, RGB colors, touch-screen, vibration, loudspeaker output, camera, sensor check and so on.

Step 3 — SECRET CODES



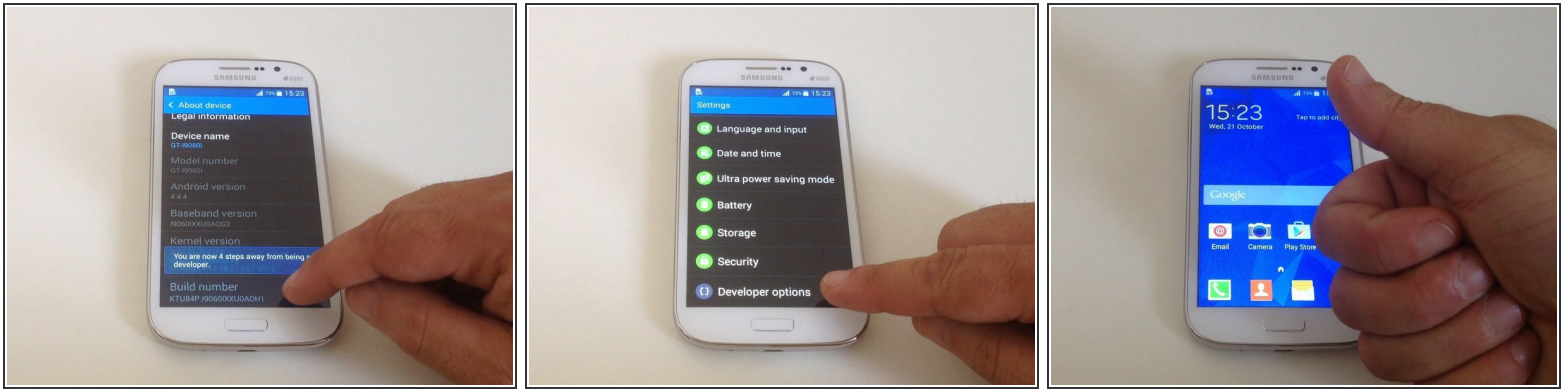
- Secret Codes - one of the most important uses of these codes are to get information about your products and troubleshoot common problems.
- *#06# - IMEI number
- *#1234# - Firmware version
- *#2222# - Hardware version
- *#0011# - GSM network status
- *#0228# - Battery status
- *#7353# - Self test menu
- *#1111# - FTA SW version

Step 4 — SAFE MODE



- General Safe Mode - If your device hang, freezes randomly, restarts, become slow over time, battery drain so quickly and any other issue then you can boot your device into the safe mode. In this mode the OS temporally turns off all user-installed apps.
 - Switch off the phone.
 - Press and hold the Volume Down and the Power buttons.
 - When you see the Galaxy logo, release only the Power button
 - Now all third-party apps (apps that are installed by you) are disabled.
 - To exit Safe mode just tap on the Safe mode notification or restart the device manually.

Step 5 — DEVELOPER OPTIONS



- **Developer options** - give you access to ADB settings, USB debugging, and various monitoring tools for your device. It's also the one of the first steps to rooting your device.
- Go to - Menu - Settings - About device, Scroll down to Build number, and tap it seven times.

⚠ Do not change the options if you do not know what you're doing.

- That's all.

- .

- .

- **Did you do it successfully?**

To reassemble your device, follow these instructions in reverse order.