



Zoomer Dino Boomer Back Button Replacement

If the back button on Zoomer Dino Boomer breaks or stops working, this guide can be used to replace the button.

Written By: Lauren Mannix



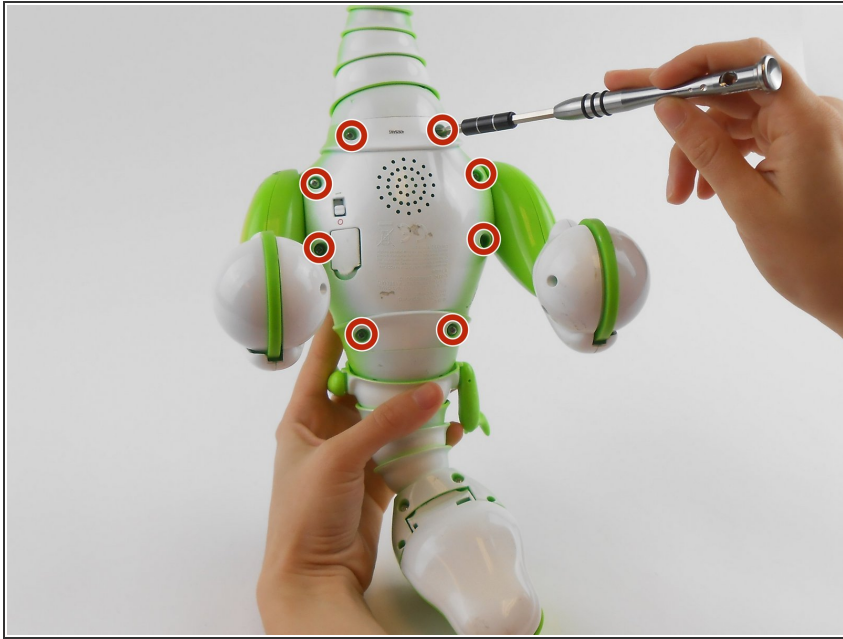
INTRODUCTION

This guide involves taking apart the Zoomer Dino Boomer in order to disconnect the sensor button from the main circuit board for replacement.

TOOLS:

- [Phillips #1 Screwdriver](#) (1)
 - [Spudger](#) (1)
 - [Tweezers](#) (1)
-

Step 1 — Back Cover



- ❗ Power off Zoomer Dino Boomer before disassembly.
- Remove the eight 9.3mm Phillips #1 screws.

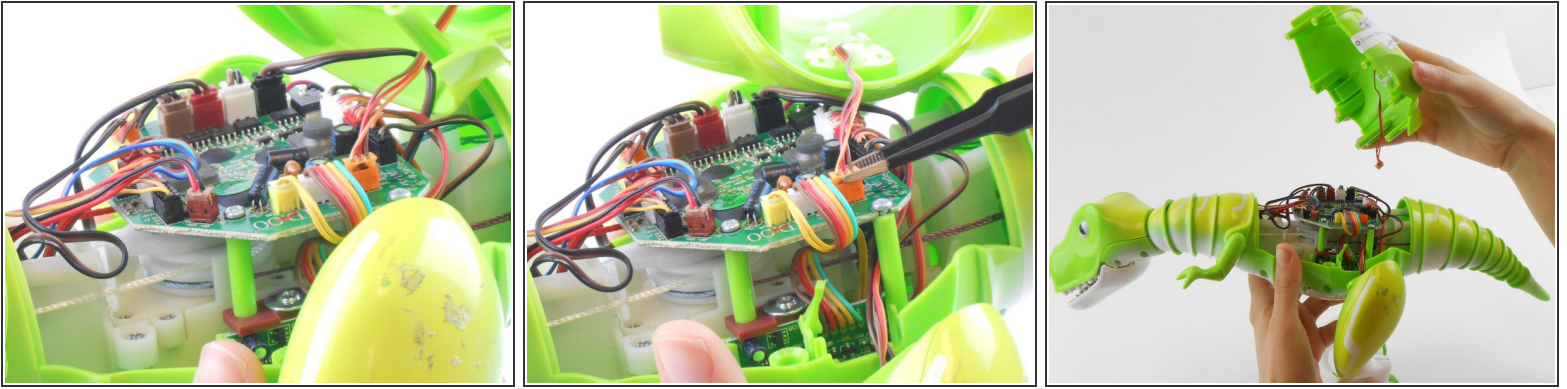
Step 2



- Turn dinosaur over and hold upright.
- Use the spudger to pry apart the back cover from the remainder of the Zoomer Dino Boomer.

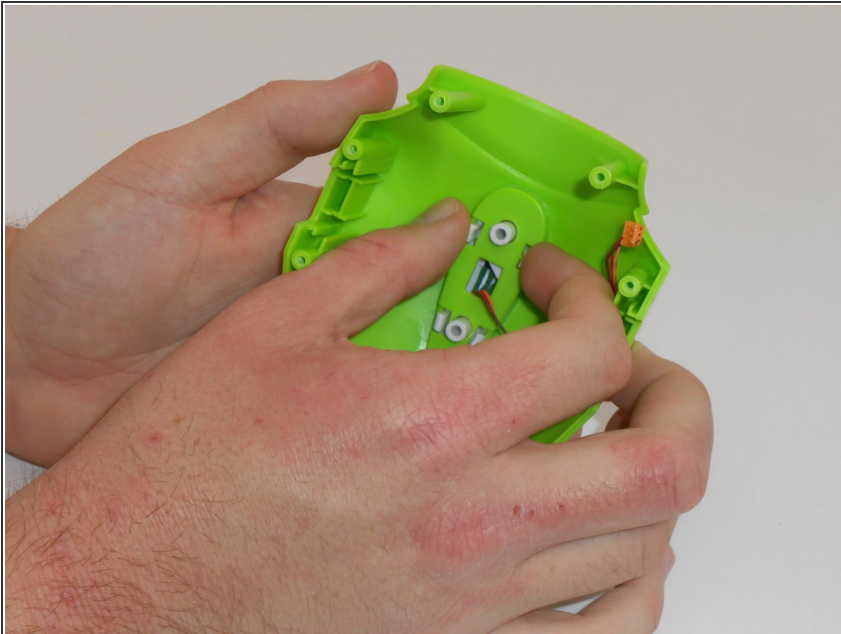
⚠ Be gentle while removing the back cover. The back cover of the Zoomer Dino Boomer is still connected to the electronic system by a wire.

Step 3



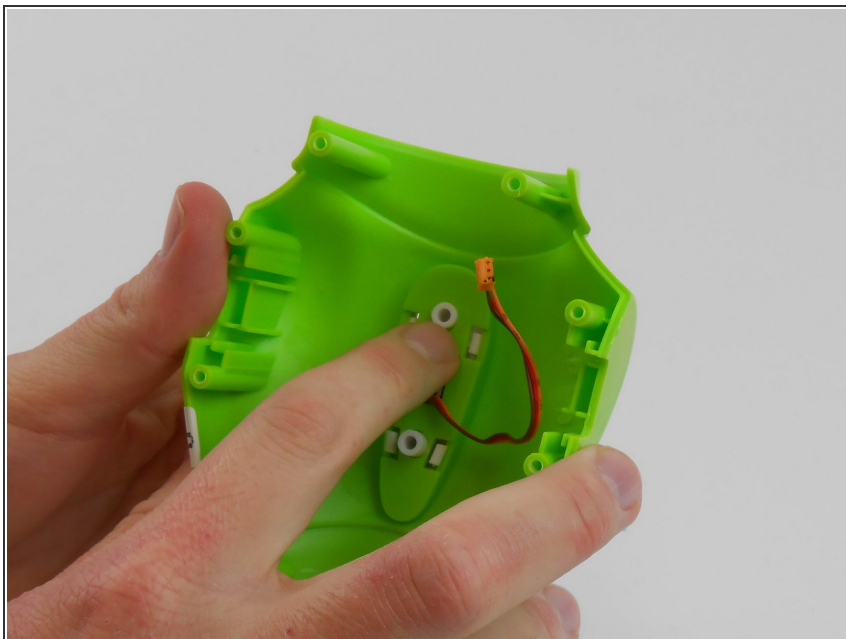
- Disconnect the wire that connects the back cover of the dino to the main circuit board by carefully pulling on the orange wire connector with tweezers.
 - Remove back cover.
 - ⓘ If you are having difficulty removing the connector from its socket, push in the small tabs on the side of the connector with the tweezers. This step may take some work.
- ⚠ Do not damage the wires or circuit board.

Step 4 — Back Button



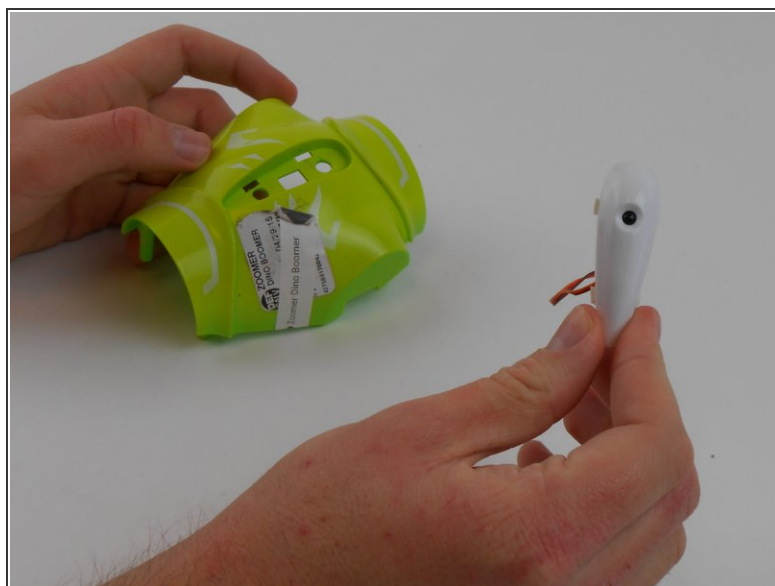
- Where the button is largest, squeeze the two white tabs together.

Step 5



- Push in the white circular piece between these tabs as far as it will go.

Step 6



- Where the button is smallest, squeeze the two white tabs together and press the circular tab in-between them until the button comes loose.
- Remove the back button.

To reassemble your device, follow these instructions in reverse order.