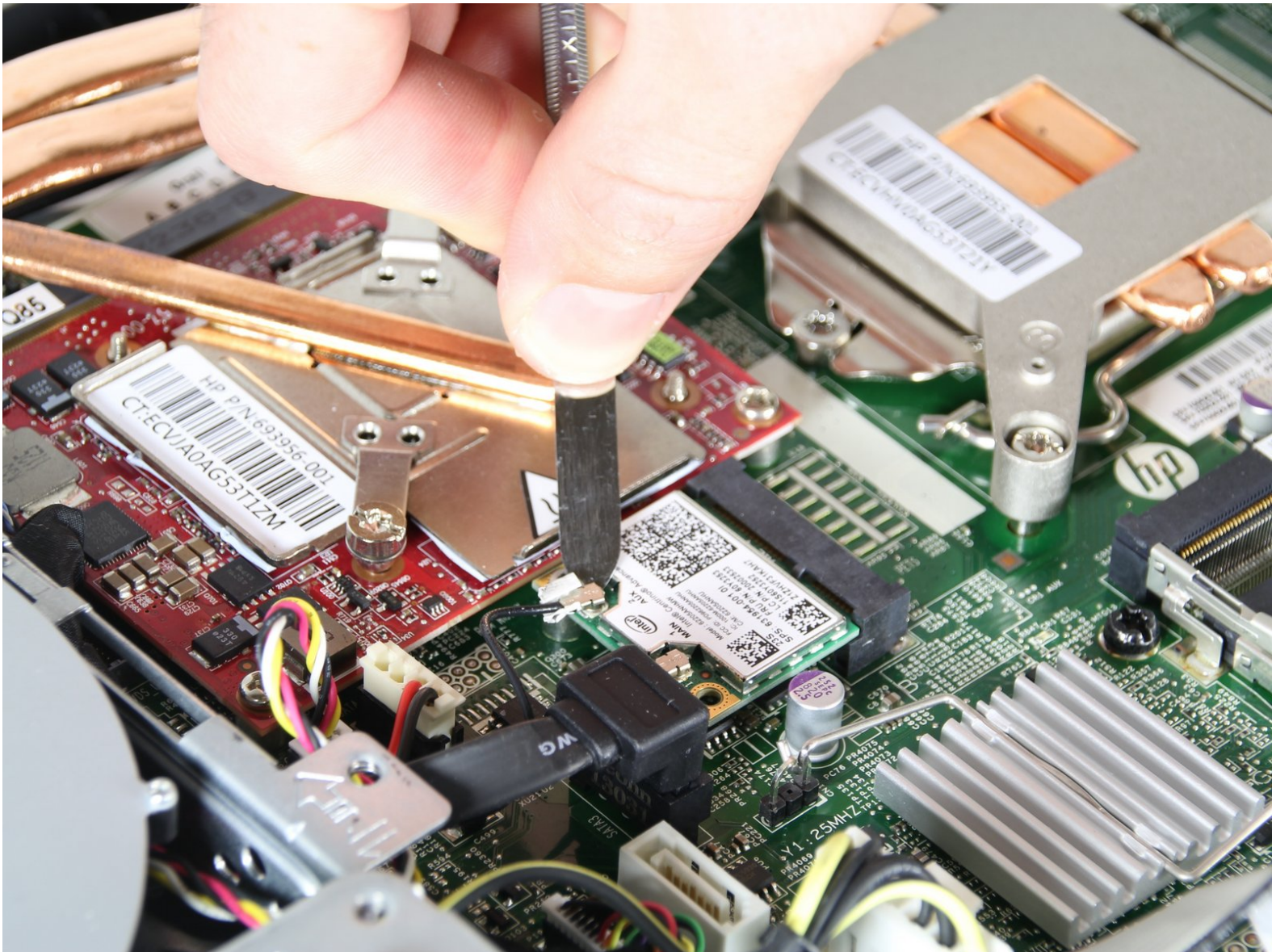




HP ProOne 600 G1 Wi-Fi Adapter Replacement

This PC comes with the Intel Centrino Advanced-N 6205 Wi-Fi adapter that connects to a wireless network, printer, or other computer. This guide will show you how to remove and replace your Wi-Fi adapter.

Written By: Janelle Layman



INTRODUCTION

If your computer can no longer connect to a wireless network it may mean you have a broken Wi-Fi adapter. Before performing any work, always remember to completely turn off and disconnect your computer from any power source.



TOOLS:

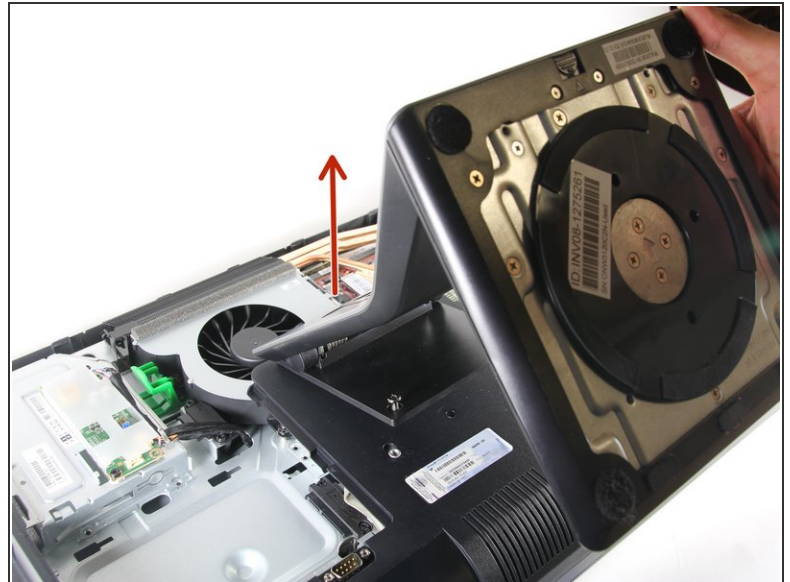
- [Phillips #1 Screwdriver](#) (1)
 - [Flexible Shaft Extension](#) (1)
 - [T15 Torx Screwdriver](#) (1)
-

Step 1 — Back Removal



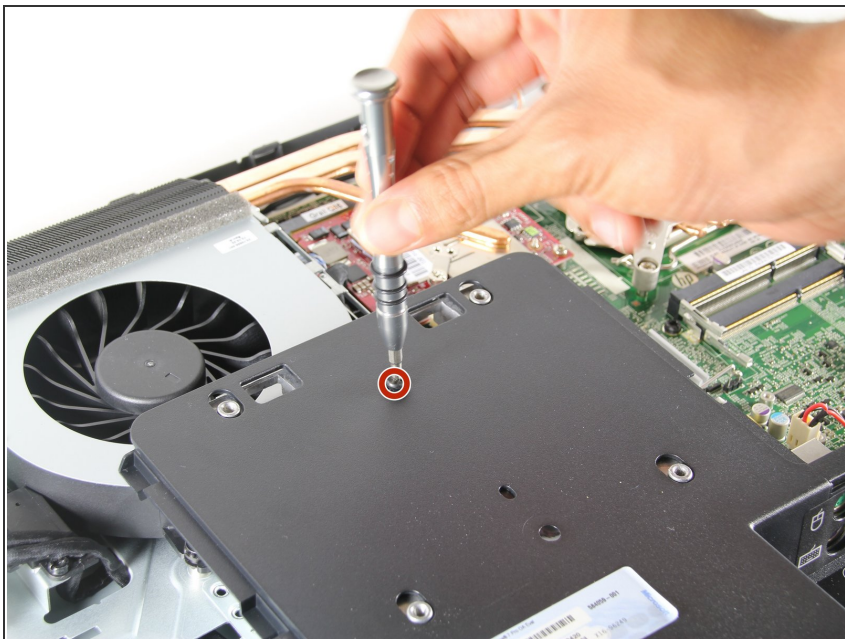
- Push the unlock tabs on the back of the monitor in and towards each other while sliding the back cover up.

Step 2



- Loosen the two 1/2" screws , with the T15 Torx Screwdriver, on each side of the stand. Remove stand.

Step 3



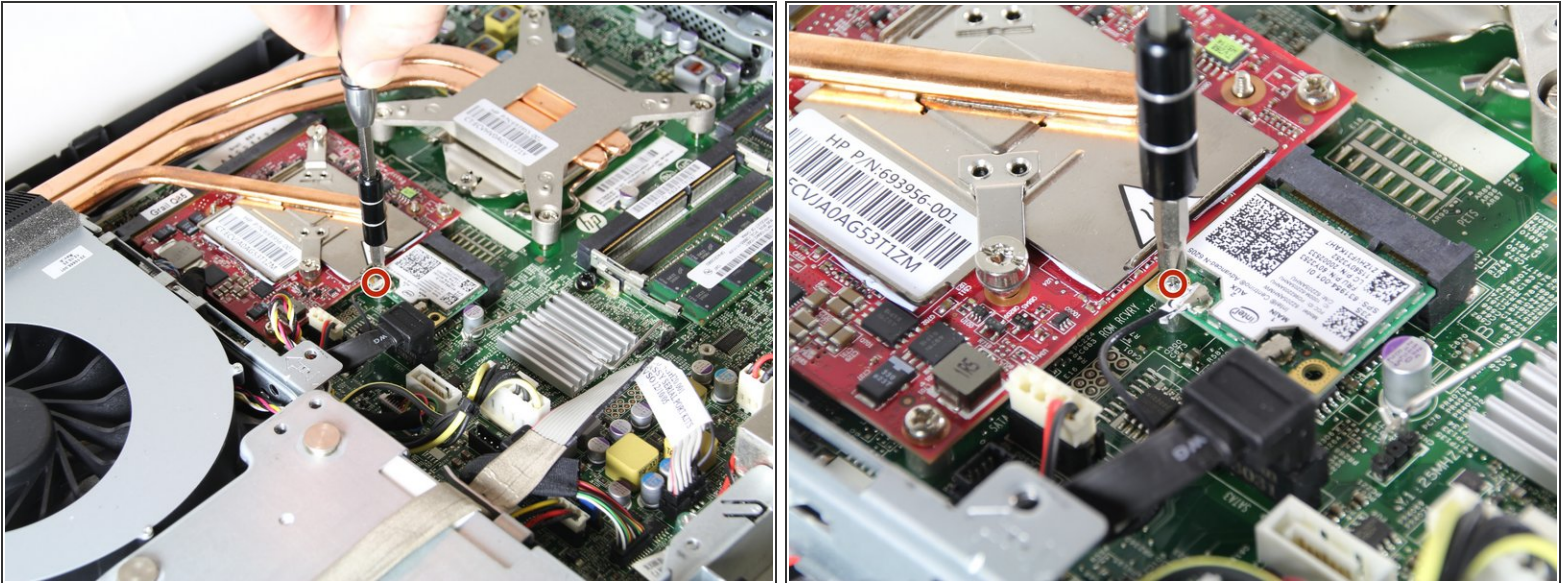
- Take out the single 3/8" screw, with the T15 Torx Screwdriver, from the middle of the backplate.

Step 4



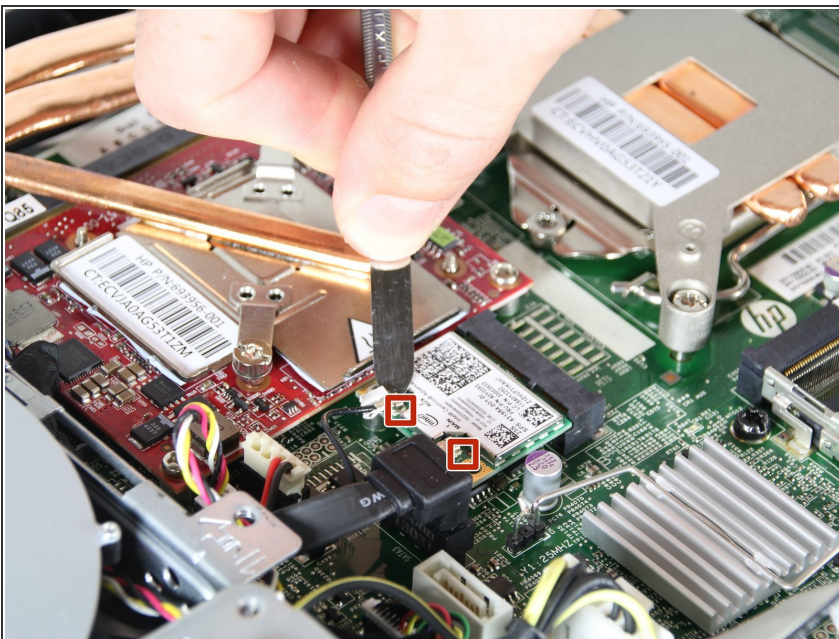
- Remove the backplate by pulling it back towards you.
- ⓘ Small plastic tabs hold in the backplate, pull these up to remove it.

Step 5 — Wi-Fi Adapter



- Locate the Wi-Fi adapter at the top right corner of where the stand once was.
- Unscrew the screws using the Philips #1 Screwdriver.

Step 6



- Remove wire tabs from the left side of the Wi-Fi adapter.
- Remove the adapter

To reassemble your device, follow these instructions in reverse order.