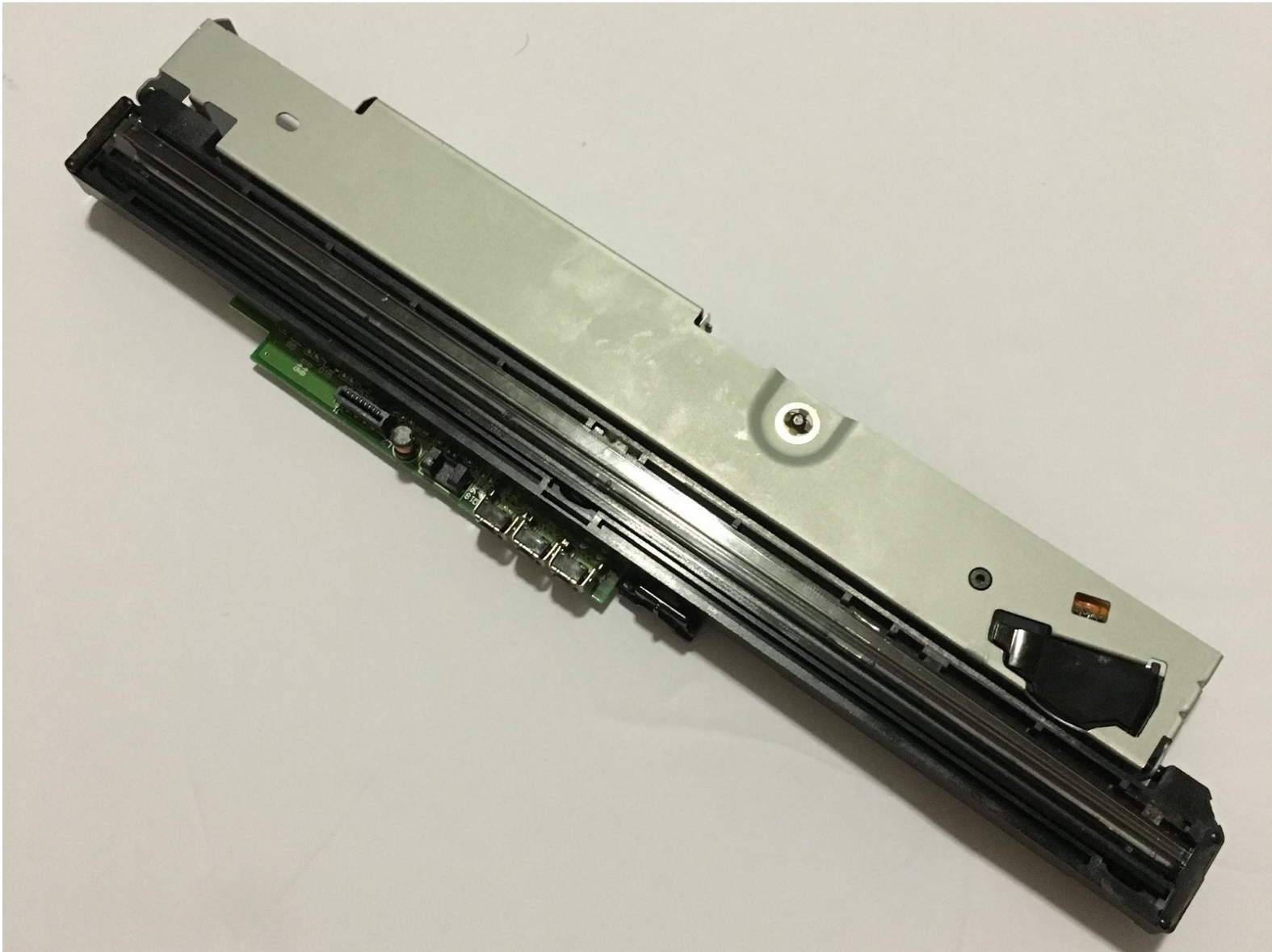




# Canon CanoScan N670U Sensor Bar Replacement

This guide will show how to remove and replace the sensor bar from the Canon CanoScan N670U.

Written By: Stephen Bui



## INTRODUCTION

If you're having scanning issues as a result of a faulty sensor bar, this is where you will want to begin.

To replace the sensor bar in the Canon CanoScan N670U, you must:

- Remove the two plastic bars that hold the glass scanner bed.
- Set aside the scanner bed.
- Loosen the belt from the plastic hook.
- Remove the sensor bar for replacement.



### TOOLS:

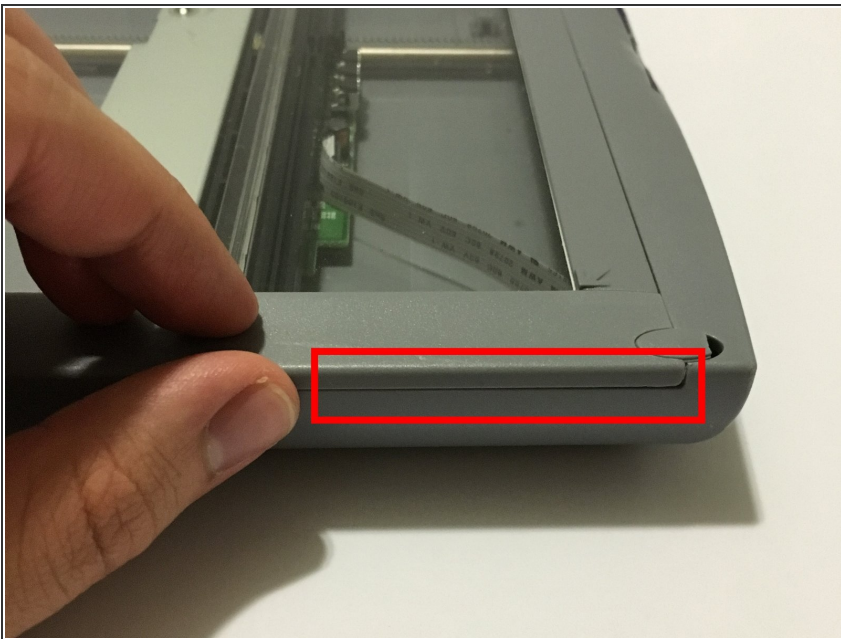
- [Tweezers](#) (1)
  - [Metal Spudger](#) (1)
-

## Step 1 — Canon CanoScan N670U Disassembly



- Open up your Canon CanoScan N670U to an upright position.

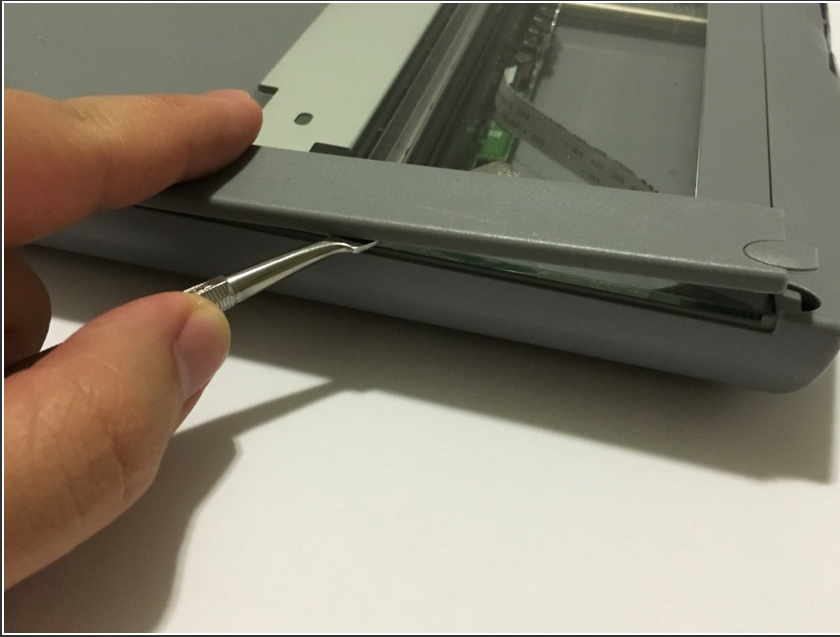
## Step 2



- Turn your device so that you're facing the long side of the Canon CanoScan N670U.
- Locate the small crevice between the plastic components of the scanner bed and the scanner base.



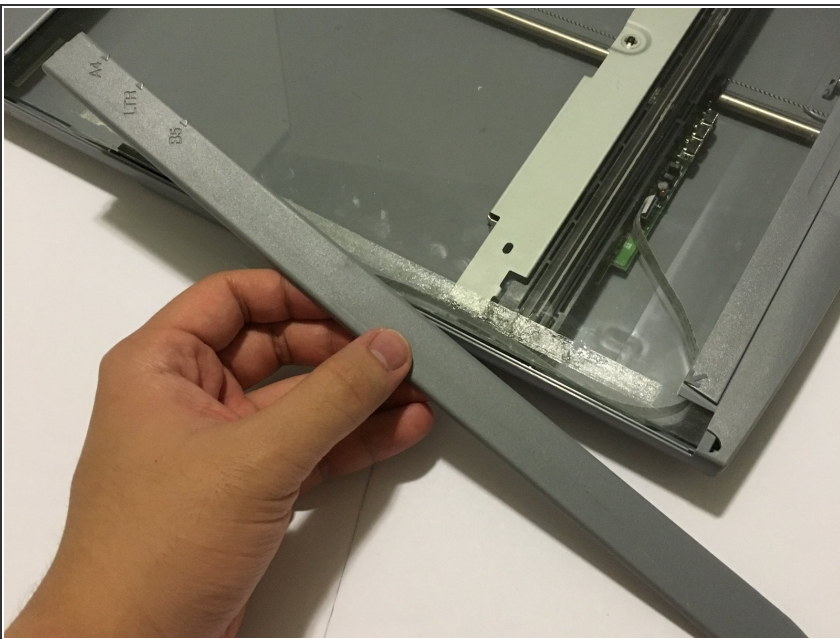
## Step 3



- Carefully insert a metal spudger tool in the crevice and slowly cut through the adhesive between the plastic components.

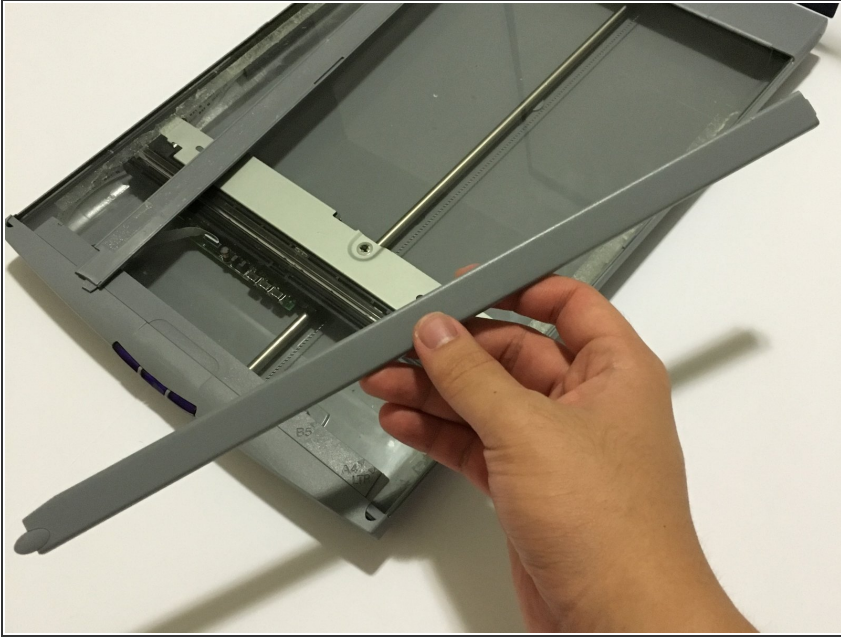
⚠ You may cut small bits of the plastic as you're slicing the adhesive. Do not forcefully bend the plastic strip as you're cutting or it will snap.

## Step 4



- Once the adhesive strip is sliced through, the plastic bar that is attached should release. Set aside the plastic bar.

## Step 5



- Repeat steps 2-4 for the other side of the scanner.

## Step 6



- Use your hands or a metal spudger tool to push the plastic bar at the bottom of the glass scanner bed forward until you can't push it any farther.

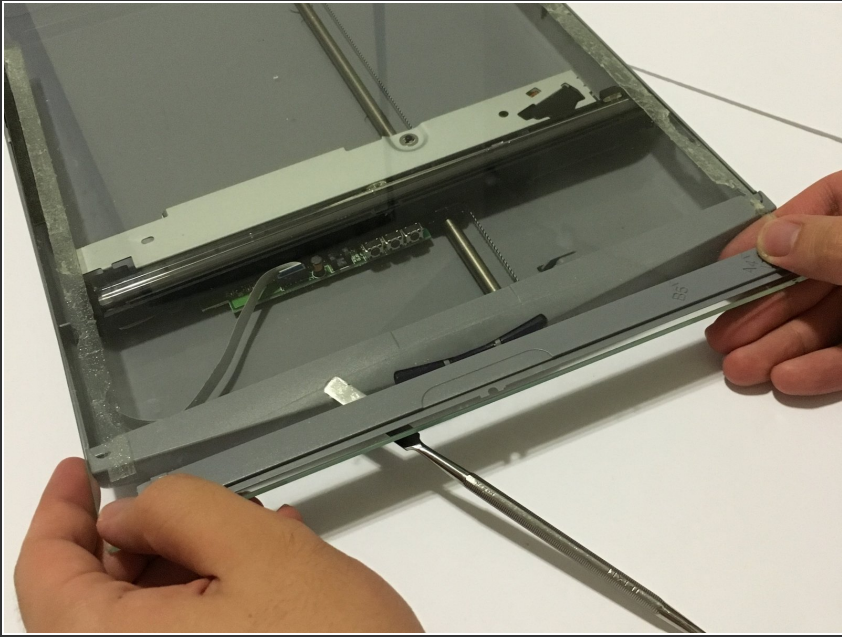
## Step 7



- Insert the metal spudger tool underneath the glass scanner bed. The front of the scanner bed should be resting on top of the tool.

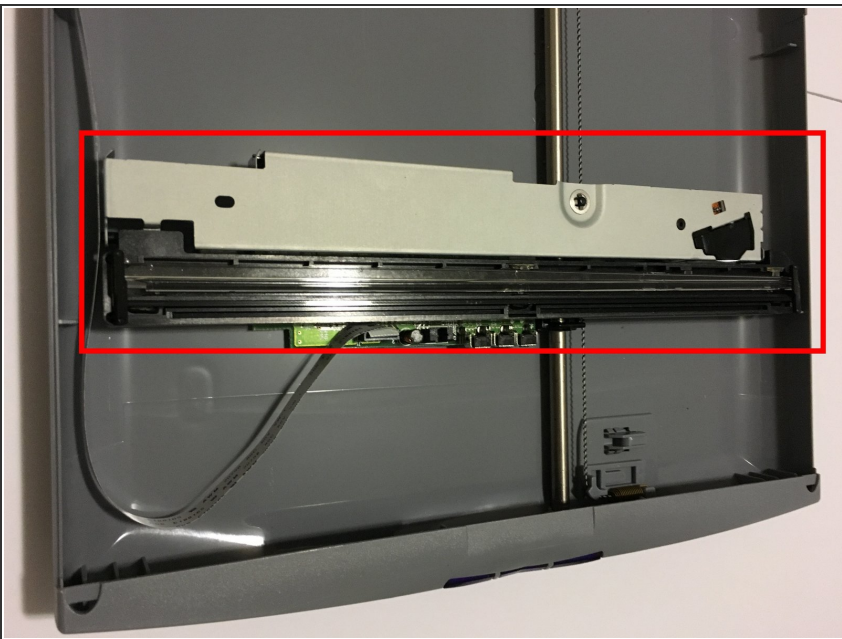


## Step 8



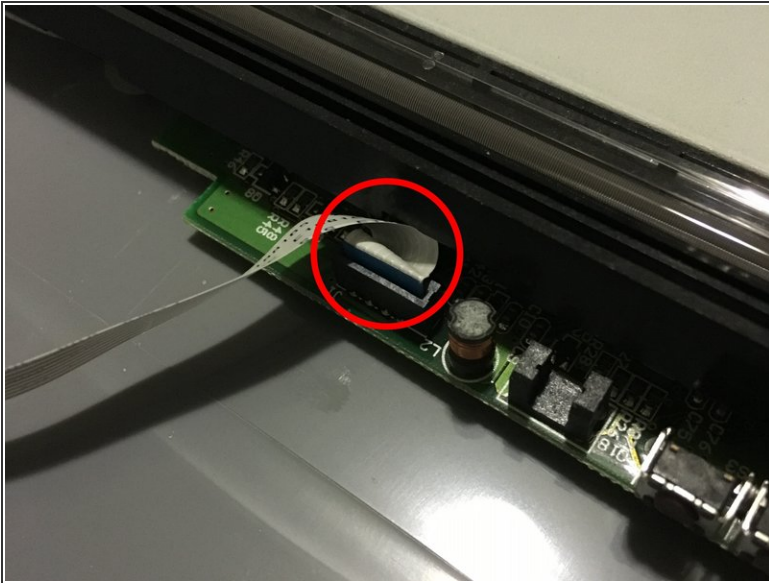
- Slowly pull the glass scanner bed towards you and set the piece aside.

## Step 9 — Sensor Bar



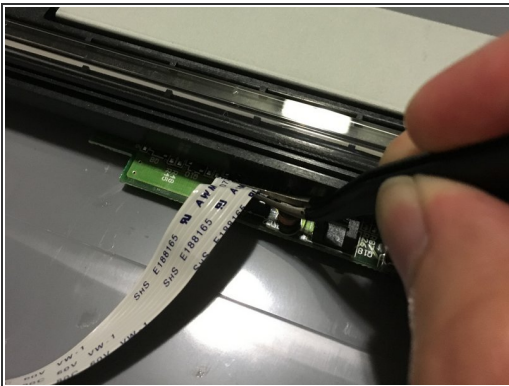
- This is the sensor bar that you will replace.

## Step 10



- Locate the small plug where the white strip of cable is connected to.
- Unfurl the cable strip if it's tucked in.

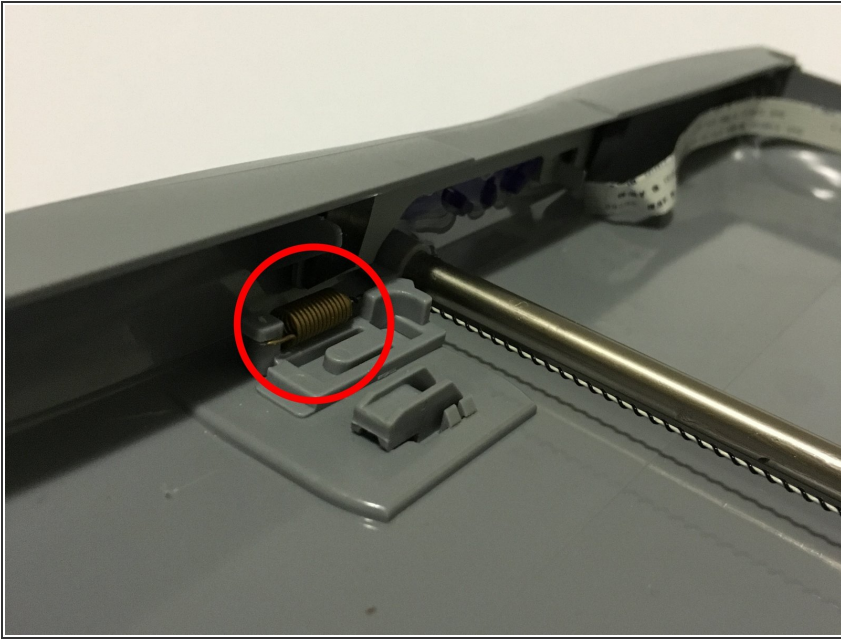
## Step 11



- Gently use tweezers or your fingers to rock the cable back and forth to disconnect the it.  
⚠ Do not apply too much pressure or you may damage some delicate components.



## Step 12



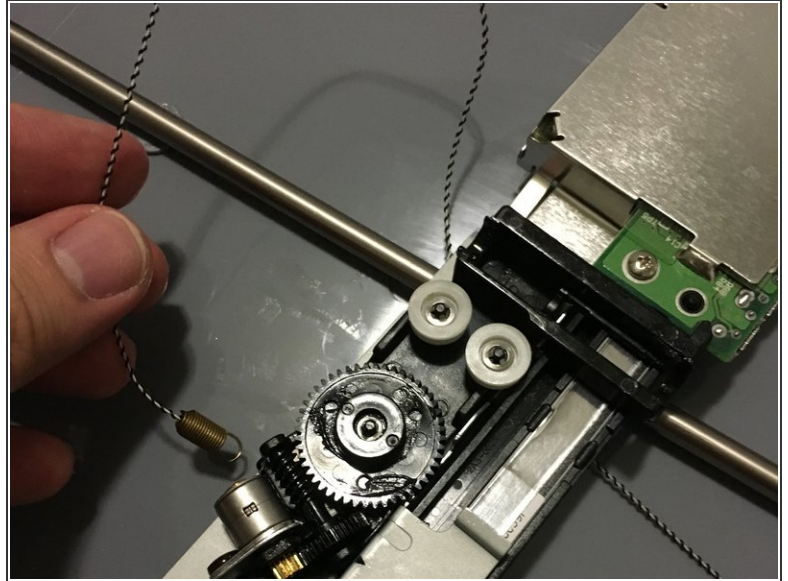
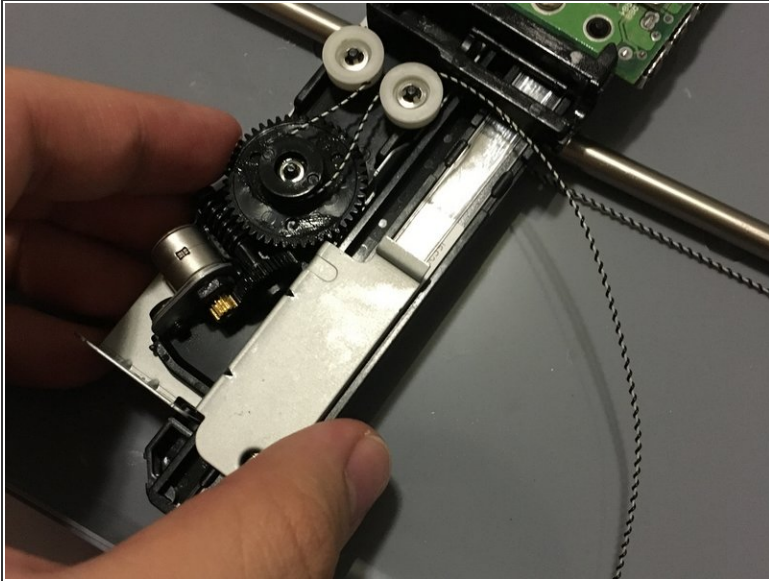
- Locate the small metal spring behind the front buttons of the Canon CanoScan N670U.

## Step 13



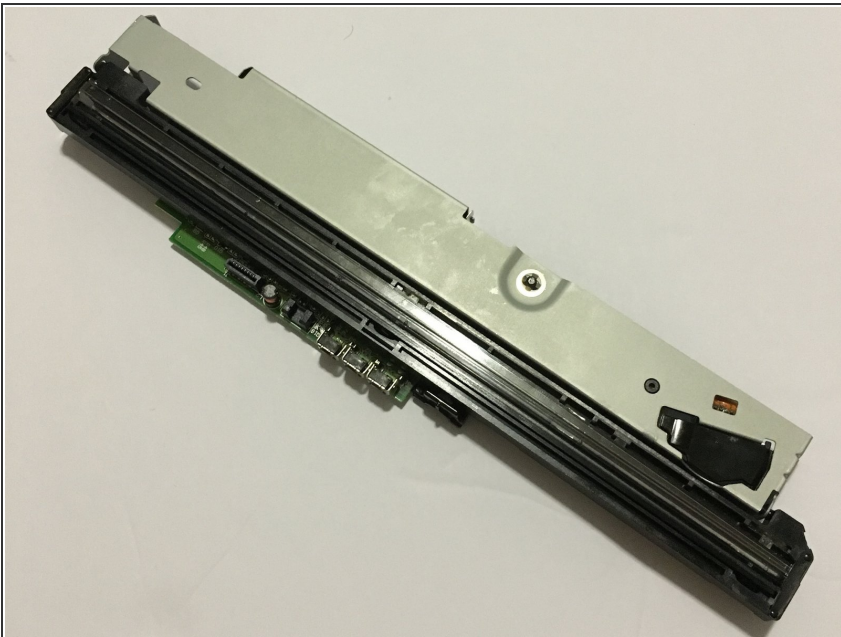
- Use tweezers to gently remove the metal spring from the plastic hook.
- ⓘ Due to the tension of the spring, it can be difficult to pull the metal end. You may attempt to use your hands to pull the spring itself if necessary.
- ⚠ Take caution to not bend the metal.

## Step 14



- Flip the sensor bar over and unwind the belt from the gear system.

## Step 15



- Remove the sensor bar from the scanner and replace it with the new one.

To reassemble your device, follow these instructions in reverse order.