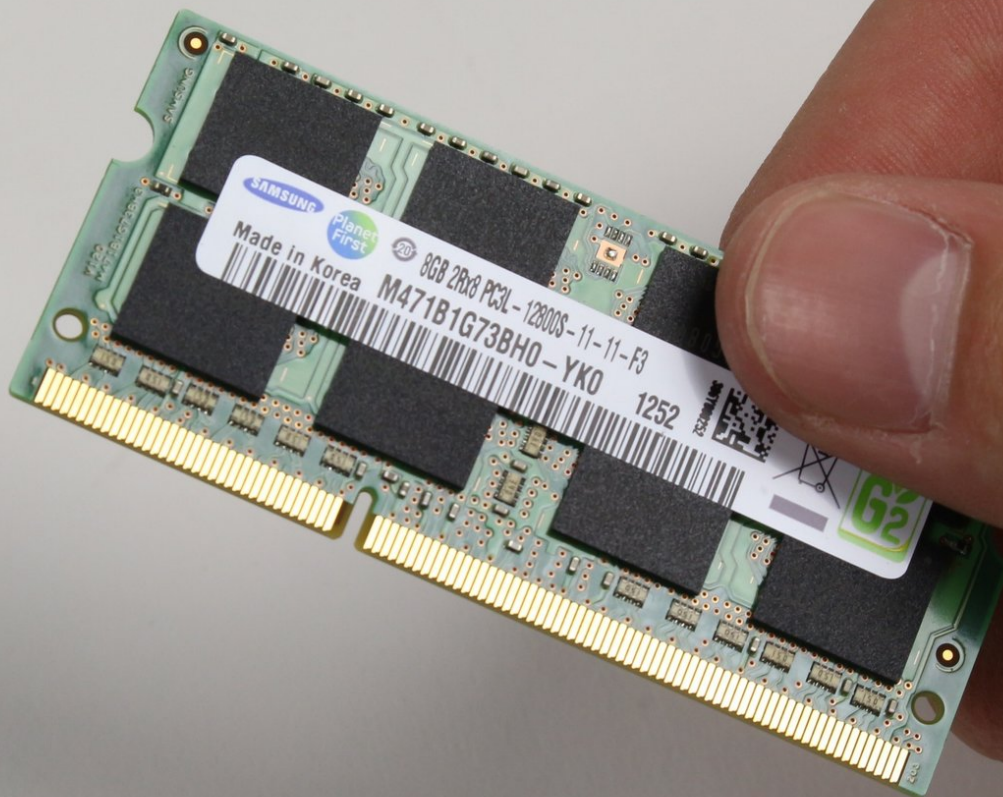




# HP EliteOne 800 G1 RAM Replacement

If your RAM is corrupted or you are upgrading your computer's RAM, follow this guide to replace it.

Written By: Kyle Koivuniemi



## INTRODUCTION

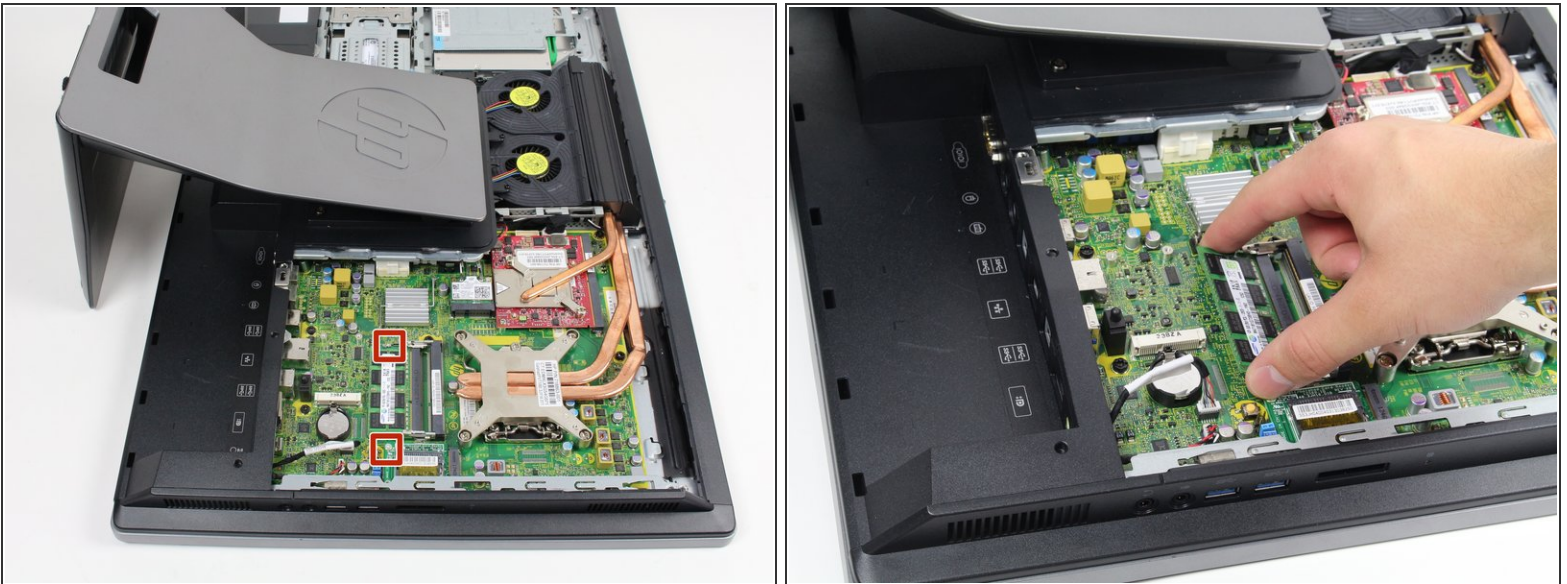
This guide will show you how to replace a RAM unit in the HP EliteOne 800 G1. There are many small parts removed during this guide, so it is important to keep track of all the components that are removed to assemble the device .

## Step 1 — Removing the Back Cover



- Place computer with the screen down on a flat surface.
- Push the two locking latches to the unlocked position.
- Push the cover toward the top of the computer and lift up.

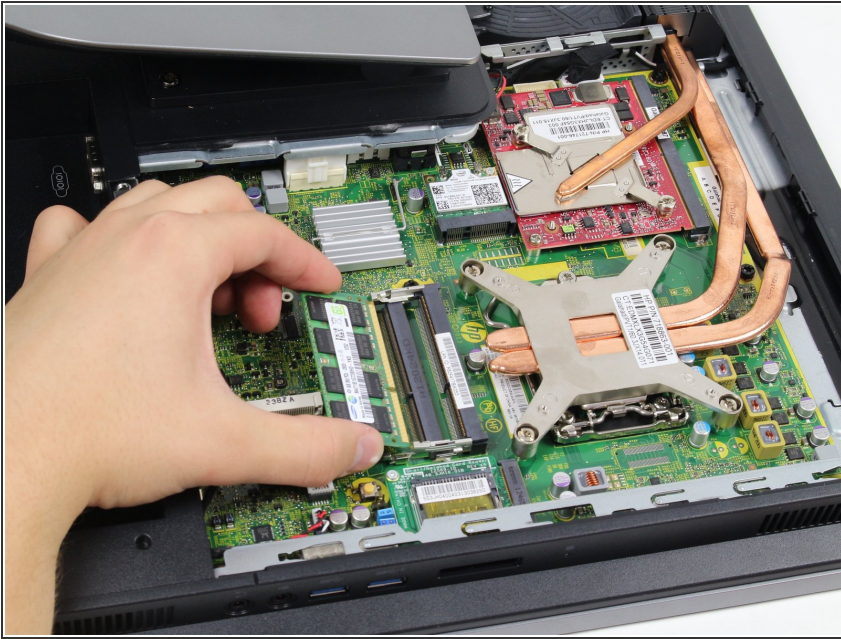
## Step 2 — RAM



- Notice the 2 latches on either side of the RAM stick.
- Press latches outward and RAM stick will flip up to about a 30 degree angle.

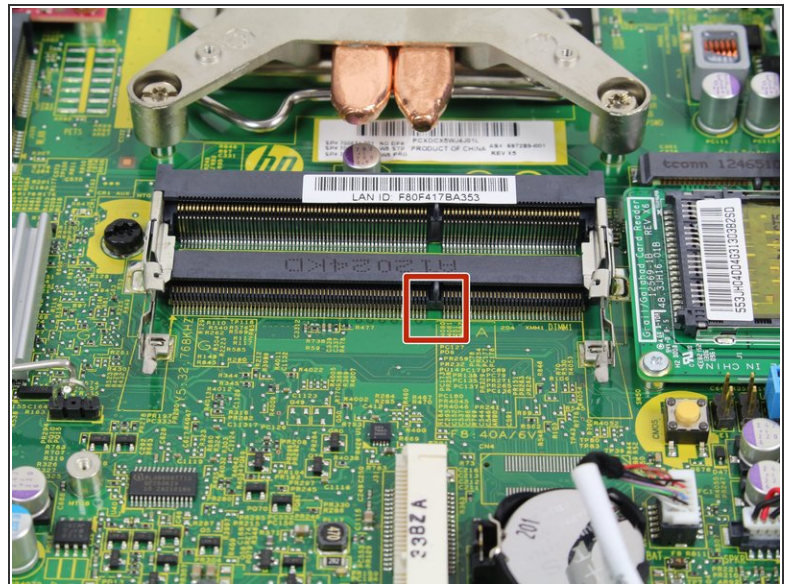
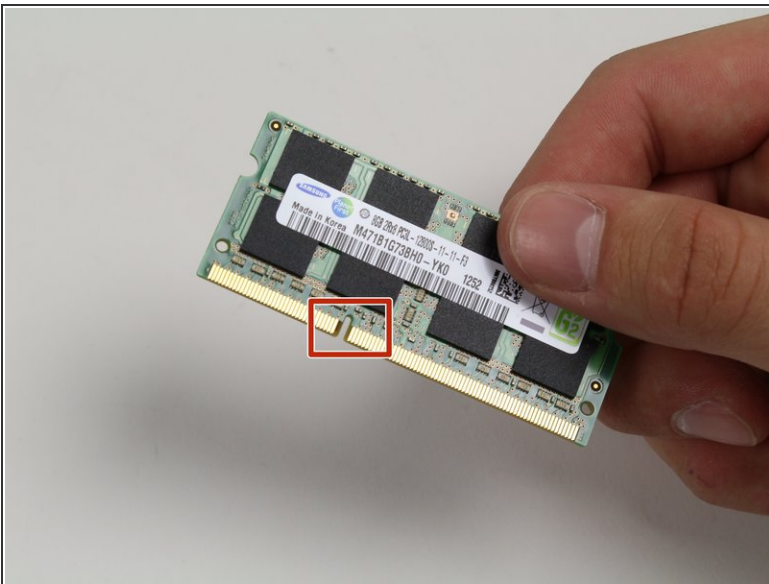


### Step 3



- Gently pull the RAM stick up at an angle. You may need to wiggle the stick up and down or side to side in order to get it loose.

### Step 4



- ☑ When replacing the RAM stick, take note of where the small notch on the stick is and where there is a similar notch on the slot. Make sure you position the new stick so that the notches line up.

To reassemble your device, follow these instructions in reverse order.

This document was generated on 2020-11-28 04:45:16 AM (MST).

