



Magic Bullet MB1001B Activator Replacement

Are you having trouble getting your Magic...

Written By: Aubree Duran



INTRODUCTION

Are you having trouble getting your Magic Bullet to turn on? Are the plastic activator tabs on your Magic Bullet broken off? This guide will help you replace the activators.

TOOLS:

Spudger (1)

6-in-1 Screwdriver (1)

Phillips #1 Screwdriver (1)

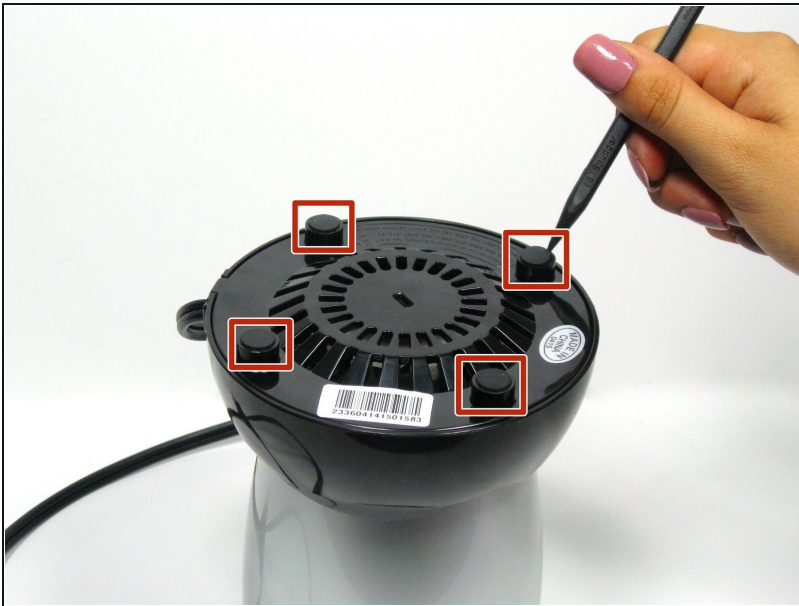
Slip Joint Pliers (1)

Step 1 — Base Gear



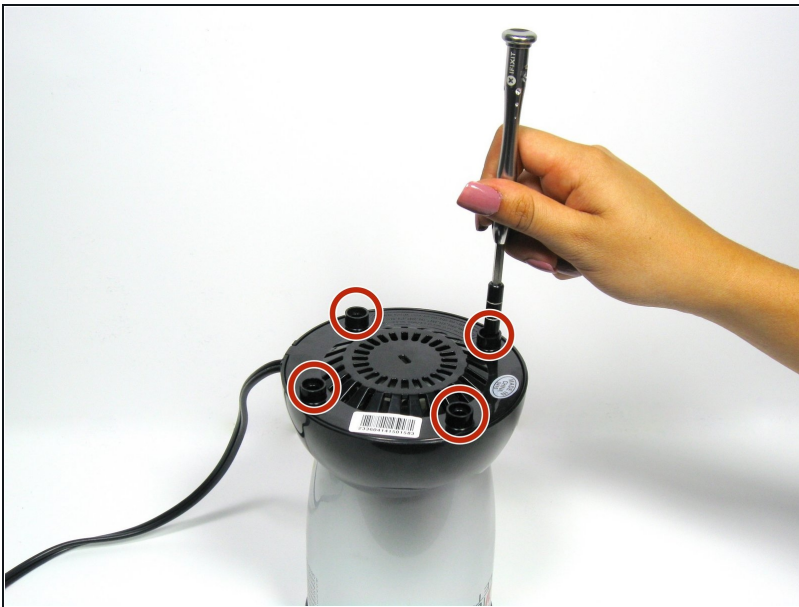
- Use pliers to grip the gear inside of the top of the device.
- ① You may have to remove a sticker that is covering the slit at the center of the bottom before completing the next step.
- Insert a flathead screwdriver into the slit at the bottom of the device while still holding the pliers in place gripped on the gear.
- Lay the device on its side. Holding the screwdriver stationary to hold the bottom side in place, use the pliers to unscrew the gear by turning the pliers CLOCKWISE.

Step 2 — Casing



- Remove the four rubber pegs from the feet on the base of the Magic Bullet using the spudger.

Step 3



- Remove the four 14.0 mm Phillips head screws in the feet of the base of the Magic Bullet using the Phillips #1 screwdriver.

Step 4



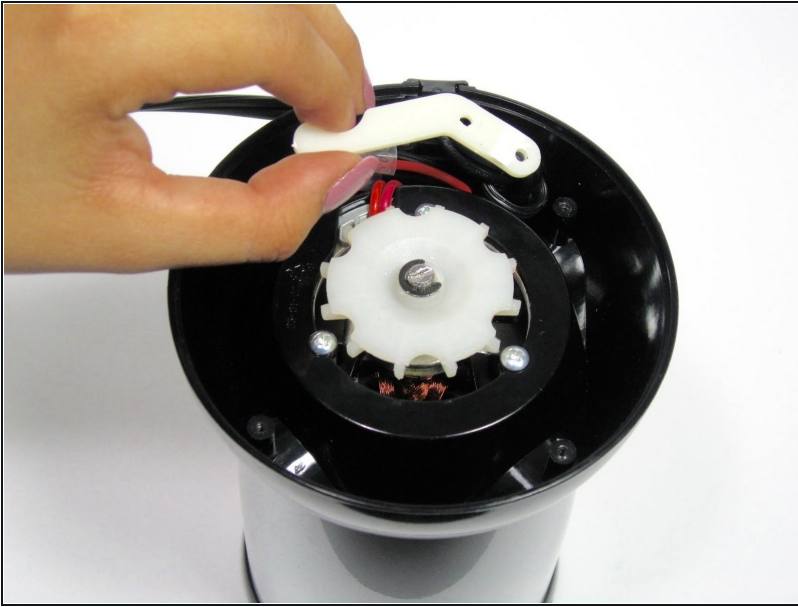
- Remove the black base plate.

Step 5



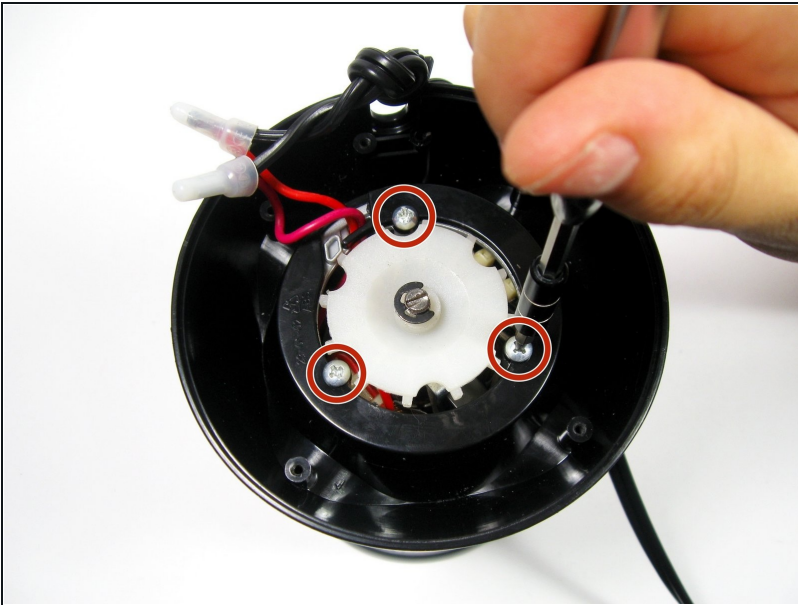
- Remove the two 13.0 mm Phillips head screws from the white plastic cable guide using a Phillips #1 screwdriver.

Step 6



- Remove the white plastic cable guide.

Step 7



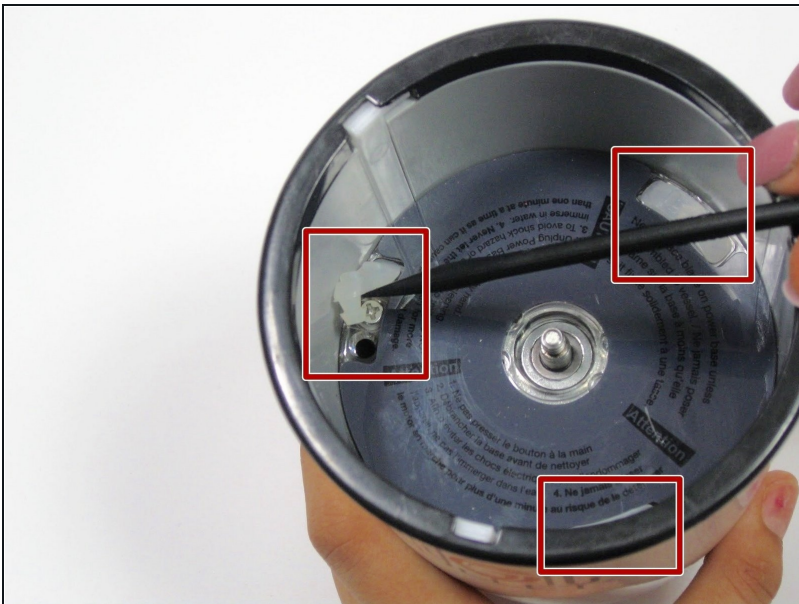
- Remove the three 11.0 mm Phillips head screws surrounding the white fan blade on the base using the Phillips #1 screwdriver.

Step 8



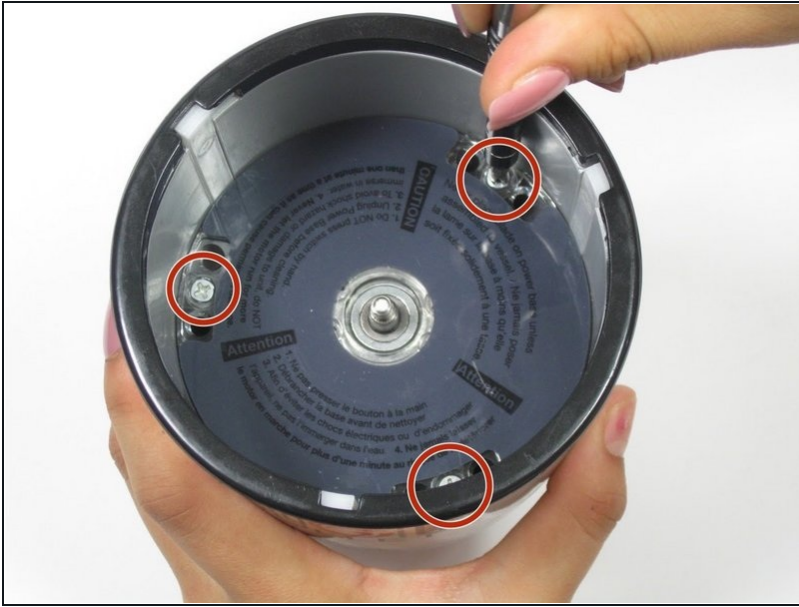
- Remove the black base.

Step 9



- Remove the three white rubber spacers with the spudger.

Step 10



- Remove the three 11.0 mm Phillips head screws using the Phillips #1 screwdriver.

Step 11



- Remove the motor.

Step 12 — Activator



- Wedge a flathead screwdriver in between the casing and white plastic activator.
 - Pry the white plastic activators from the casing as needed.
-

To reassemble your device, follow these instructions in reverse order.