



# Magic Bullet MB1001B Casing Replacement

Replacing the casing on your Magic Bullet MB1001B.

Written By: Kelly McGartland



---

# INTRODUCTION

Are there cracks in your casing? This guide will help you replace the casing.

---



## TOOLS:

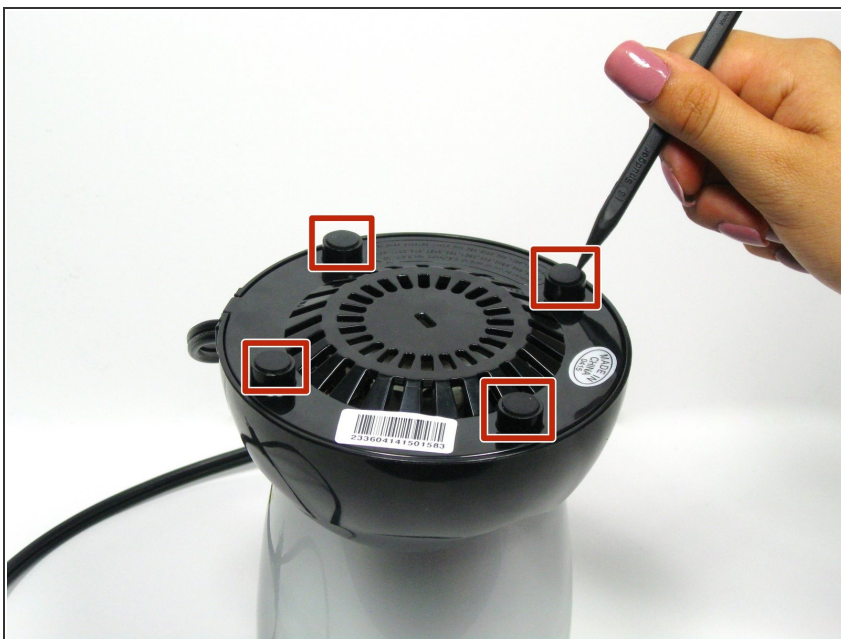
- [Slip Joint Pliers](#) (1)
  - [Flathead Screwdriver](#) (1)
  - [Spudger](#) (1)
  - [Phillips #1 Screwdriver](#) (1)
-

## Step 1 — Base Gear



- Use pliers to grip the gear inside of the top of the device.
- i* You may have to remove a sticker that is covering the slit at the center of the bottom before completing the next step.
- Insert a flathead screwdriver into the slit at the bottom of the device while still holding the pliers in place gripped on the gear.
- Lay the device on its side. Holding the screwdriver stationary to hold the bottom side in place, use the pliers to unscrew the gear by turning the pliers **CLOCKWISE**.

## Step 2 — Casing



- Remove the four rubber pegs from the feet on the base of the Magic Bullet using the spudger.



### Step 3



- Remove the four 14.0 mm Phillips head screws in the feet of the base of the Magic Bullet using the Phillips #1 screwdriver.

### Step 4



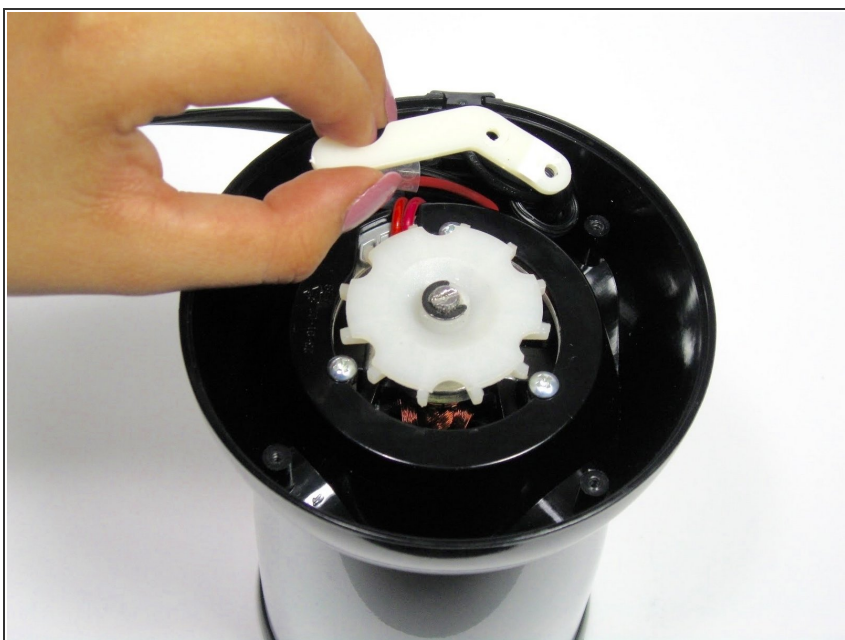
- Remove the black base plate.

## Step 5



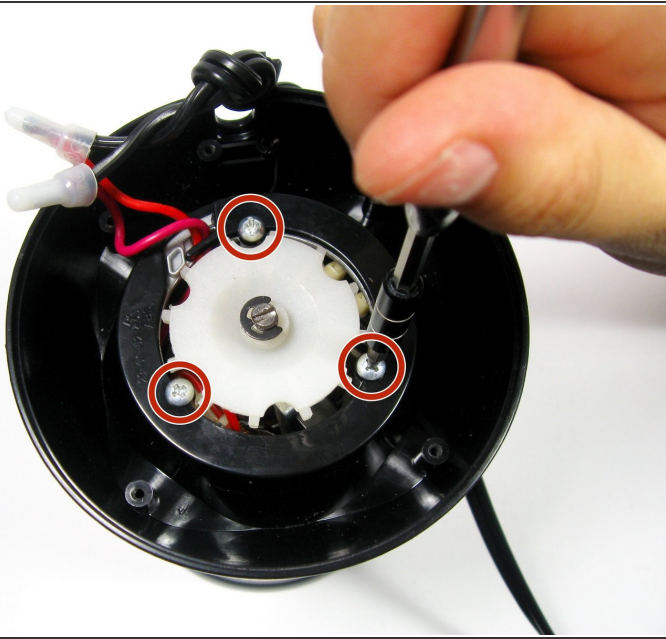
- Remove the two 13.0 mm Phillips head screws from the white plastic cable guide using a Phillips #1 screwdriver.

## Step 6



- Remove the white plastic cable guide.

## Step 7



- Remove the three 11.0 mm Phillips head screws surrounding the white fan blade on the base using the Phillips #1 screwdriver.

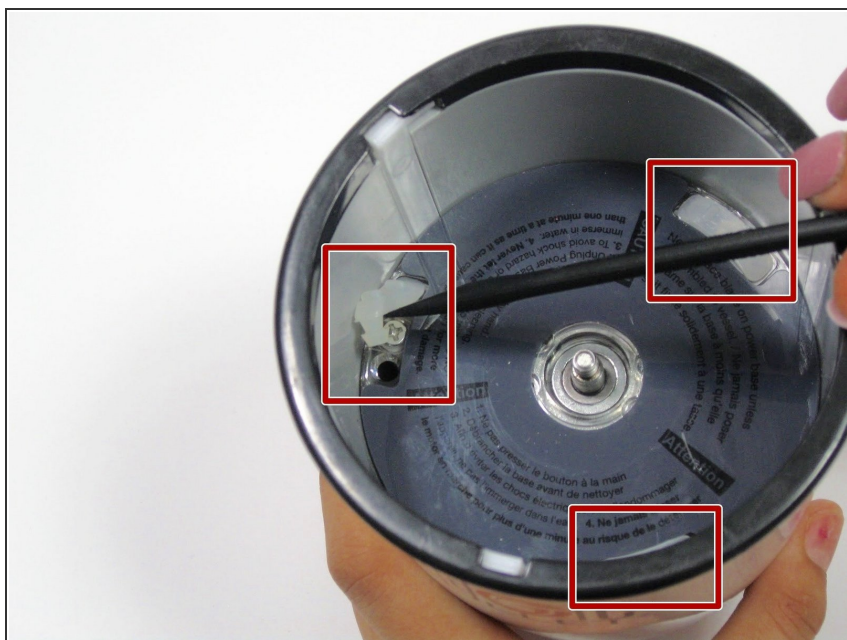
## Step 8



- Remove the black base.



## Step 9



- Remove the three white rubber spacers with the spudger.

## Step 10



- Remove the three 11.0 mm Phillips head screws using the Phillips #1 screwdriver.

## Step 11



- Remove the motor.

To reassemble your device, follow these instructions in reverse order.