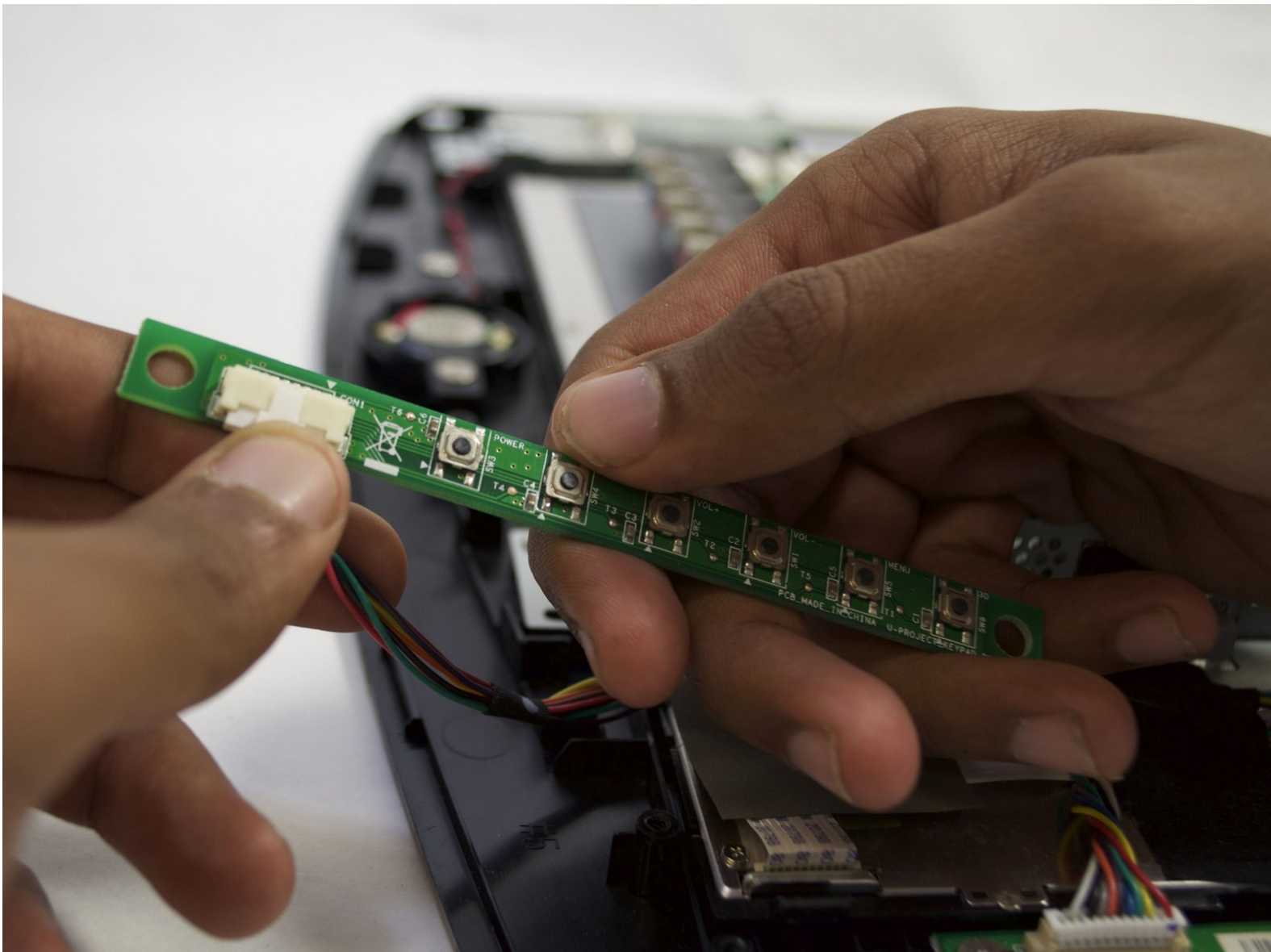




Sony PlayStation 3D Display Control Buttons Replacement

This guide will show you how to replace the control buttons located on the back of the Sony PlayStation 3D Display.

Written By: Tia McNaughton



INTRODUCTION

This repair might be needed if the buttons on your Sony PlayStation 3D Display are not working.



TOOLS:

- [Metal Spudger](#) (1)
- [Phillips #2 Screwdriver](#) (1)
- [iFixit Opening Tools](#) (1)
- [Phillips #1 Screwdriver](#) (1)



PARTS:

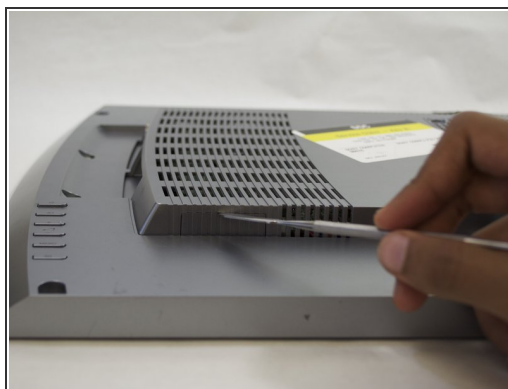
- [PlayStation 3D Power Button Board](#) (1)

Step 1 — Rear Case



- Remove the base by pushing in the button and sliding out the unit.

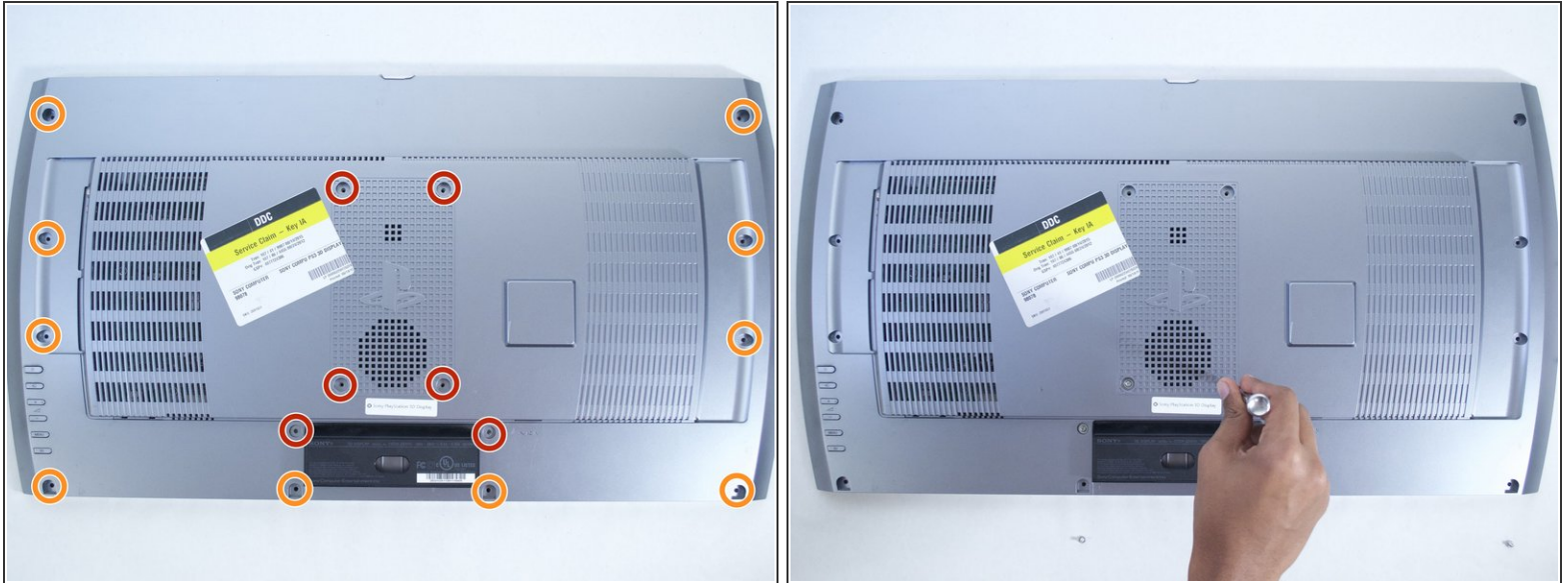
Step 2



- Remove USB port cover from back plate with a metal spudger.

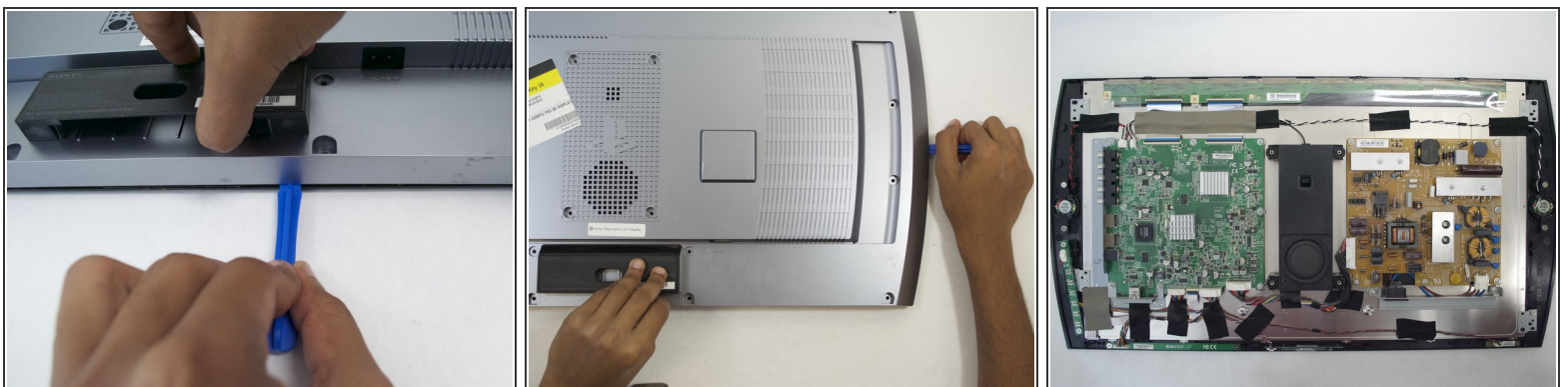
i This will prevent the cover from falling under the back plate once it is removed.

Step 3



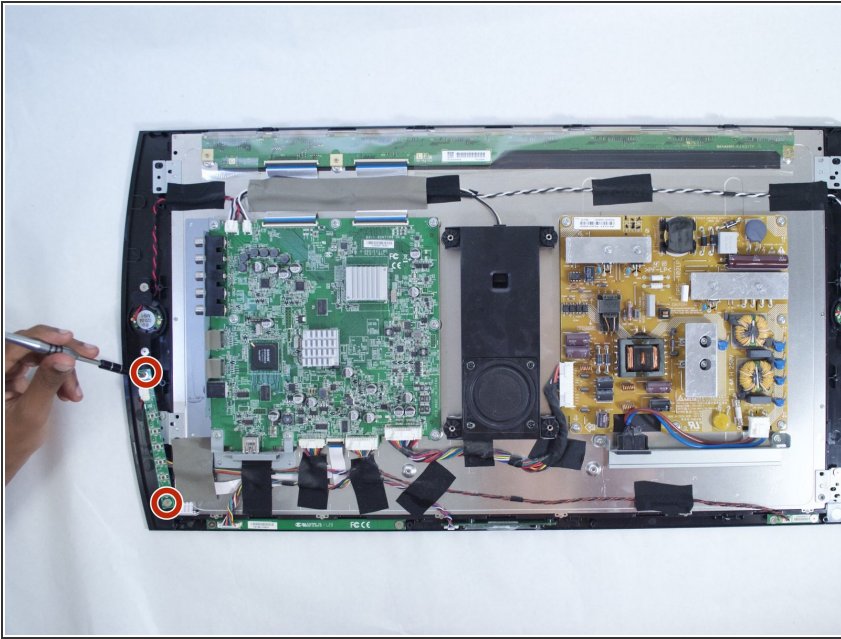
- With the Phillips #02 screwdriver, remove the six 6 mm length x 6 mm head screws from the back plate.
- With the Phillips #02 screwdriver, remove the ten 6 mm length x 8 mm head screws from the back plate.
- ⓘ These screws have different threads and need to be kept separate.

Step 4



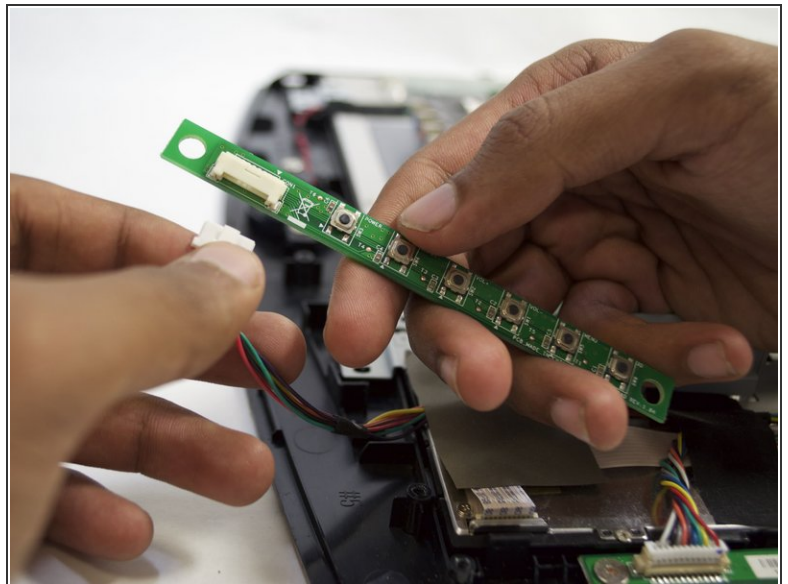
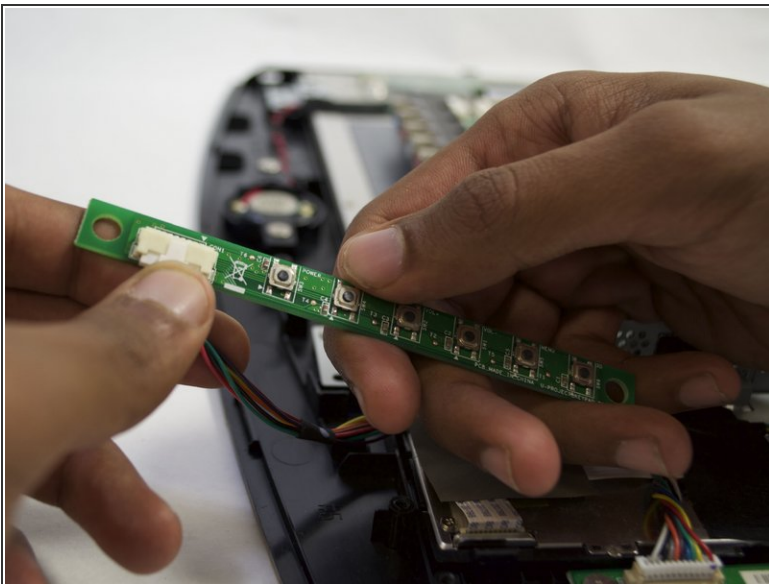
- Remove back plate with a plastic opening tool by slowly prying around the entire plate.
- ⚠ Be gentle to avoid breaking the plastic clips which hold the plate.
- Once separated the plate easily lifts off.

Step 5 — Control Buttons



- With the Phillips #01 screwdriver, remove the two 5 mm length x 7 mm head screws from the top and bottom of the control button bar.

Step 6



- Detach the control button bar by depressing the small white tab that connects the bar to its wires.

To reassemble your device, follow these instructions in reverse order.