



iMac Intel 24" EMC 2111 Power Supply Replacement

Replace a blown power supply on your iMac Intel 24" EMC 2111.

Written By: Andrew Bookholt



INTRODUCTION

Use this guide to replace a blown power supply.



TOOLS:

- [Phillips #1 Screwdriver](#) (1)
- [T10 Torx Screwdriver](#) (1)
- [T8 Torx Screwdriver](#) (1)



PARTS:

- [iMac Intel 24" 2.16/2.33 GHz Power Supply](#) (1)

Step 1 — Access Door



- Loosen the two Phillips screws securing the access door to your iMac.
- ⓘ Both screws remain captive within the access door.
- Remove the access door.

Step 2 — Front Bezel



- Remove the following screws along the lower edge of your iMac:
 - Three 6 mm T8 Torx screws
 - One 8 mm T8 Torx screw

Step 3



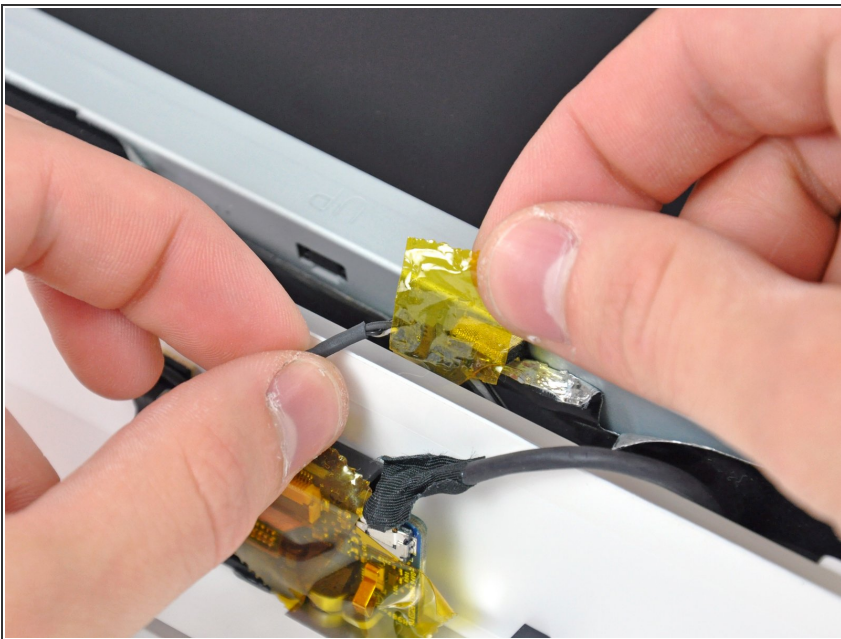
- ① Lay your iMac stand-side down on a flat surface.
- To lift the front bezel off the iMac, simultaneously:
 - Use your thumbs to press in the RAM arms and hold the iMac down.
 - Use your index fingers to pull the small bridge of material on the front bezel toward yourself.
 - Pull the front bezel up with your index fingers.
- Once the small bridge of material has cleared the RAM arms, lift the front bezel by its lower edge just enough to clear the bottom edge of the rear case.

Step 4



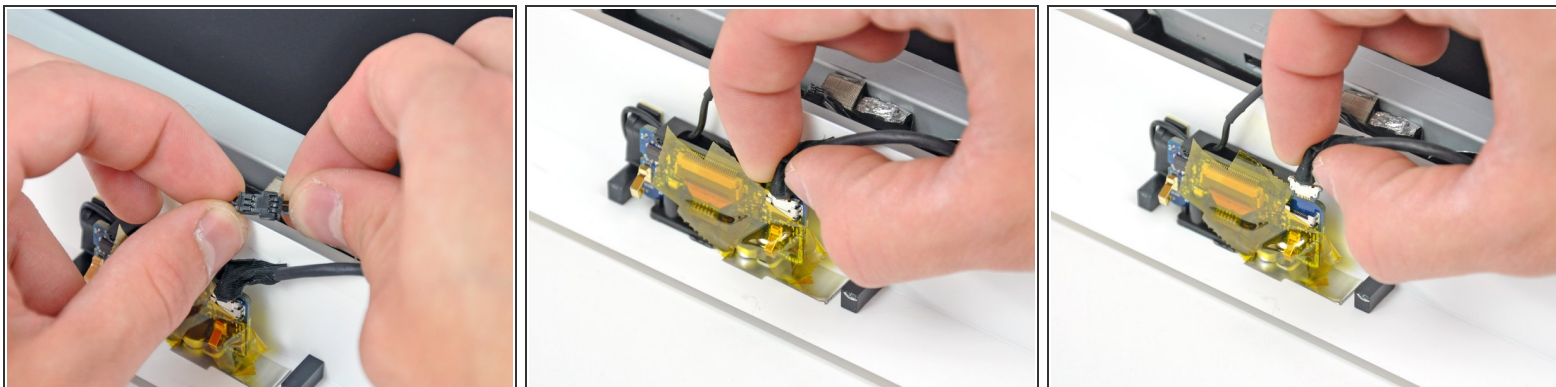
- Lift the front bezel off the rear case and rotate it away from the bottom edge of the iMac, minding the camera and microphone cables still attached to its upper edge.
- ⓘ The third picture shows the top front bezel brackets and their slots cut into the top edge of the iMac's rear case.
- ⚠ Do not completely remove the front bezel, as it is still attached by the camera/microphone cables.

Step 5



- ⓘ If necessary, remove the strip of tape covering the microphone cable connector.
- ★ The microphone connector is located near the inside of top edge of your iMac.

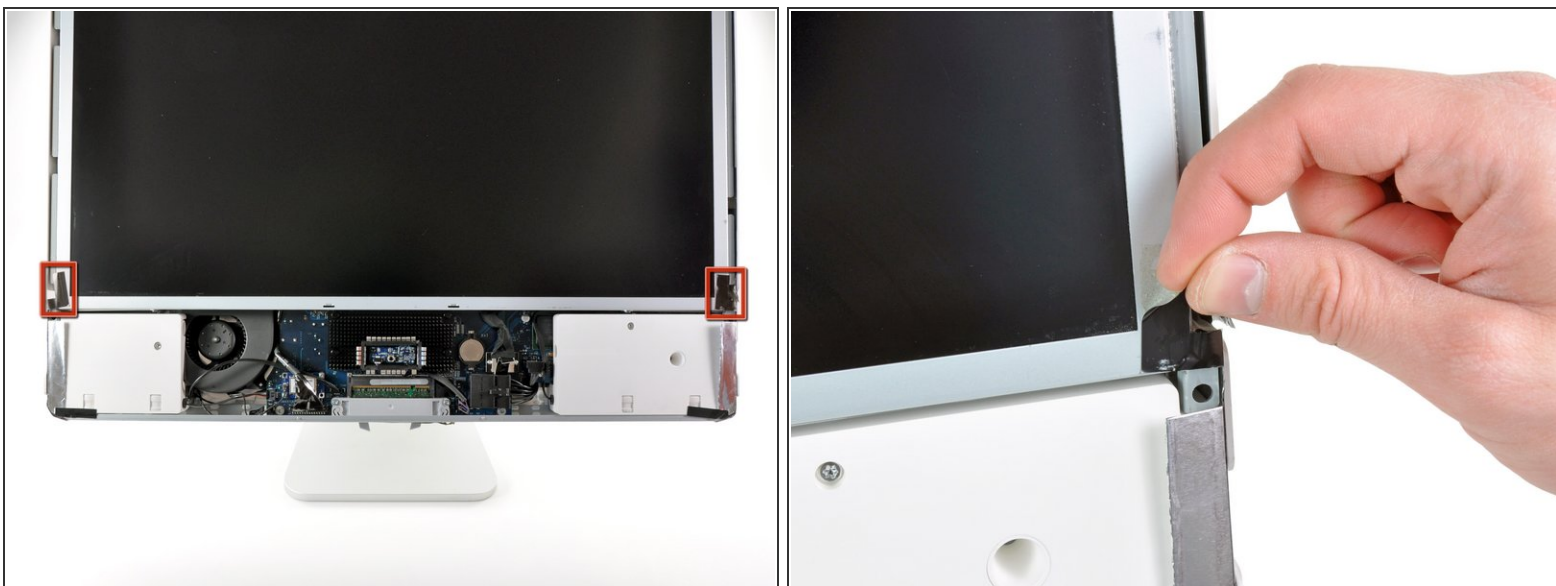
Step 6



- Disconnect the microphone cable.
- Disconnect the camera cable by pulling its connector away from the socket on the camera board.

⚠ The camera cable connector and socket are delicate and easily bent. Remove with caution.

Step 7 — Display Assembly



- Peel the two highlighted EMI shield tabs off the frame of the LCD.

Step 8



- Remove the two T6 Torx screws securing the display data cable to the logic board.

Step 9



- Pull the black plastic tab attached to the display data cable connector to disconnect it from the logic board.

Step 10



- Use your fingertips to pull both sides of the wide inverter cable connector out of its socket on the logic board.
- De-route the inverter cable from its location next to the CPU fan.

Step 11



- ⚠ Before attempting this step, we recommend laying your iMac stand-side down on a table to avoid the display falling down.
- Remove the eight T8 Torx screws securing the display assembly to the rear case.
- ⓘ It is helpful to use a thin magnetized screwdriver to remove these screws.

Step 12



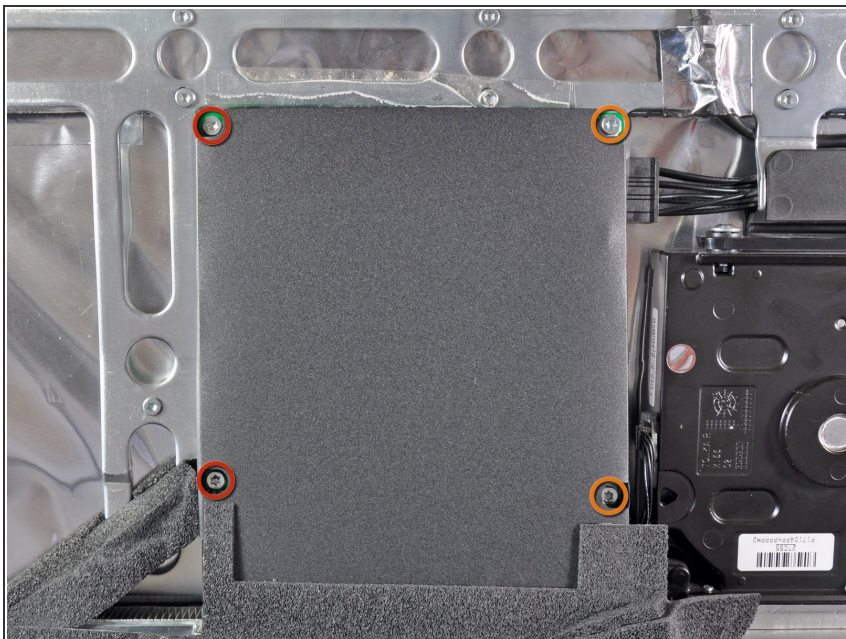
- Remove the display assembly from the iMac.

Step 13 — Power Supply



- Peel the strip of foam tape off the top edge of the CPU/GPU heat sink framework.
- ⓘ If necessary, transfer this tape to your new power supply once you have removed it from the iMac.

Step 14



- Remove the following four screws:
 - Two 18 mm T10 Torx coarse thread screws
 - Two 14.3 mm T10 Torx fine thread screws

Step 15



- Rotate the power supply out of the rear case from its left side.
- Disconnect the DC-Out cable by depressing the lock on the connector while pulling it away from its socket on the power supply.

Step 16



- Disconnect the AC-In cable by disconnecting its lock while separating the two halves of its connector.
- Remove the power supply from the iMac.

To reassemble your device, follow these instructions in reverse order.