



Prerequisite

This guide has to be used as a prerequisite only.

Written By: Orlandria Heggs



INTRODUCTION

This is a prerequisite only.



TOOLS:

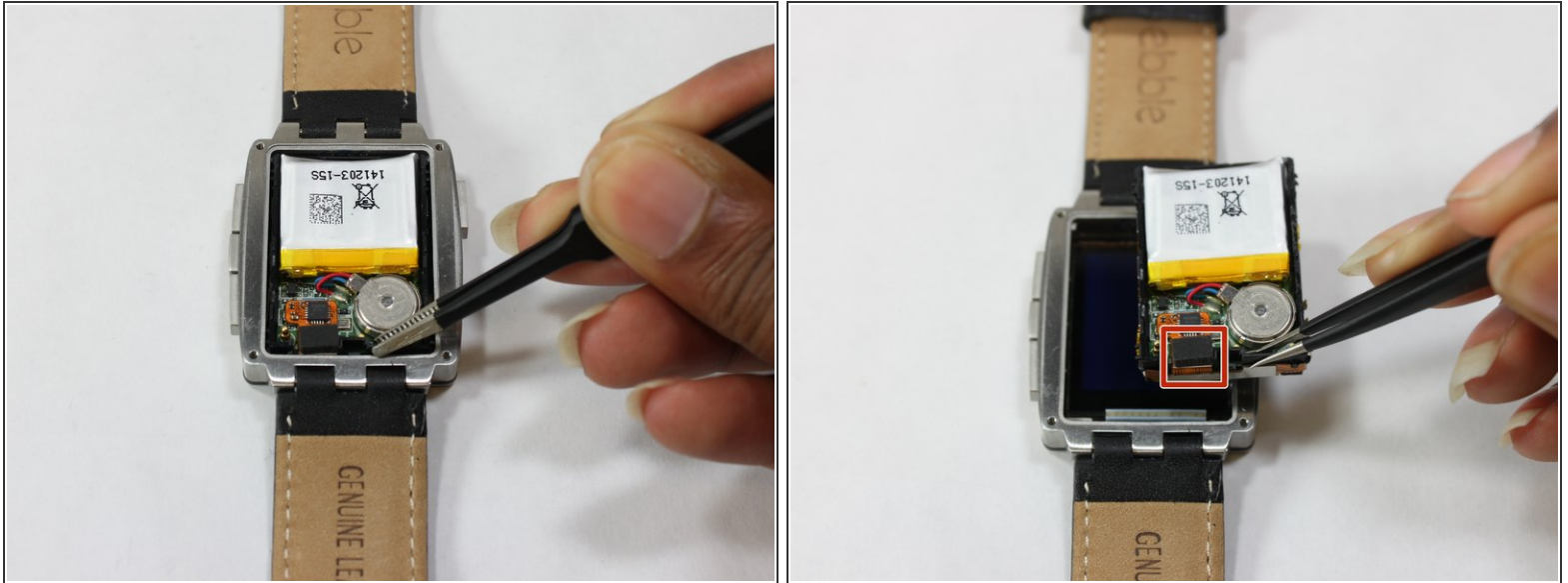
- [T3 Torx Screwdriver](#) (1)
 - [Tweezers](#) (1)
-

Step 1 — Internal Hardware



- Use a Torx T3 screwdriver to unscrew the four 3.5 mm Torx T3 screws holding the back plate.
- ☑ Make sure the screws are kept in a safe place to insure they are not lost.
- Remove the back plate.

Step 2



- The plastic frame is clipped inside the steel body with four clips, two each on the left and the right side of the watch, near the corners. You can stick a small screwdriver into the cutouts right above the clips and gently lever the plastic frame up, corner by corner.
- Once the clips are released, use a pair of tweezers to grab onto the black plastic frame and remove the internal hardware.
- ⓘ Adhesive on the back side of the battery holds the internal components to the front case.
- Use tweezers or a plastic opening tool to disconnect the ribbon cable from the motherboard.

To reassemble your device, follow these instructions in reverse order.