



# Sony Xperia Z5 Rear Camera Replacement

Sony Xperia Z5 is built with 23MP rear camera. Here comes with the Sony Xperia Z5 rear camera replacement guide.

Written By: Lenka





## TOOLS:

- [Heat Gun](#) (1)
- [iFixit Opening Picks set of 6](#) (1)
- [Spudger](#) (1)
- [Tweezers](#) (1)
- [Heavy-Duty Suction Cups \(Pair\)](#) (1)



## PARTS:

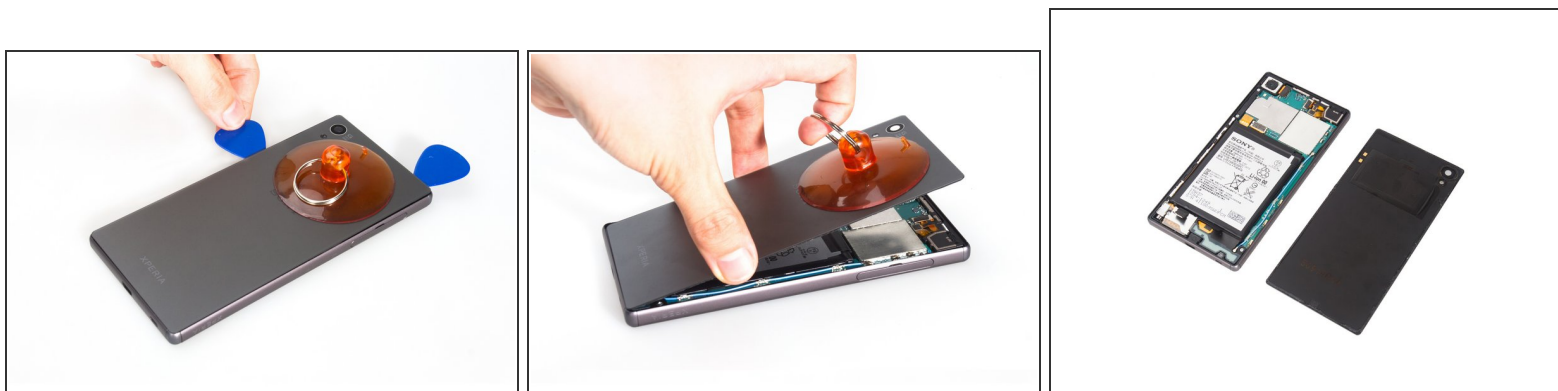
- [Sony Xperia Z5 Rear Camera](#) (1)
- [Sony Xperia Z5 Back Cover Adhesive](#) (1)

## Step 1 — Rear Camera



- Heat the back cover to soften the adhesive sticker.
- Place the suction cup and inert metal opening tool to open a gap from top side.

## Step 2



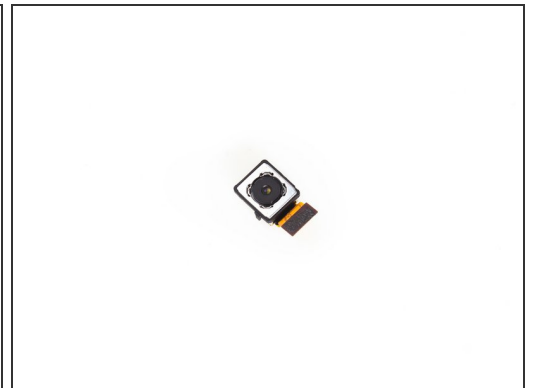
- Insert the guitar pick and slide it to cut the adhesive sticker underneath.
- Remove back cover.

### Step 3



- Release battery connector in order to prevent short circuit.

### Step 4



- Remove rear camera.

To reassemble your device, follow these instructions in reverse order.