



Cobra SPX 5300 Display Screen Replacement

Replace the screen display of your Cobra SPX 5300 Radar Laser Detector.

Written By: Fanny Auad



INTRODUCTION

If you are having difficulties looking at the display screen of your Cobra SPX 5300 this guide will walk you through its replacement.

TOOLS:

- [Phillips #0 Screwdriver](#) (1)
 - [Phillips #00 Screwdriver](#) (1)
-

Step 1 — Windshield Bracket Mount



- Remove the four 9.5 mm Phillips #0 screws from the back of the device.

Step 2



- Pull the black plastic back case off of the device.

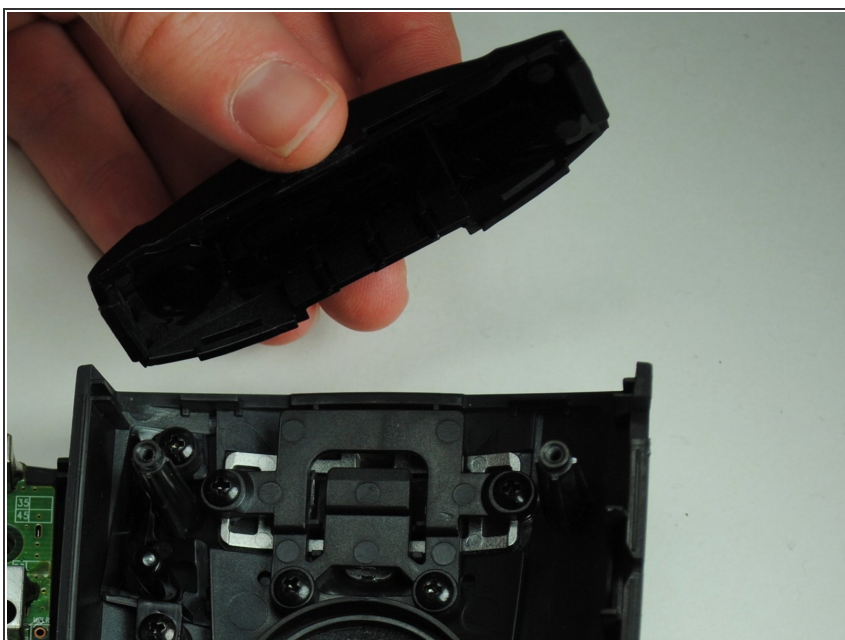
Step 3



- Lift up the motherboard and lay it flat next to the device.

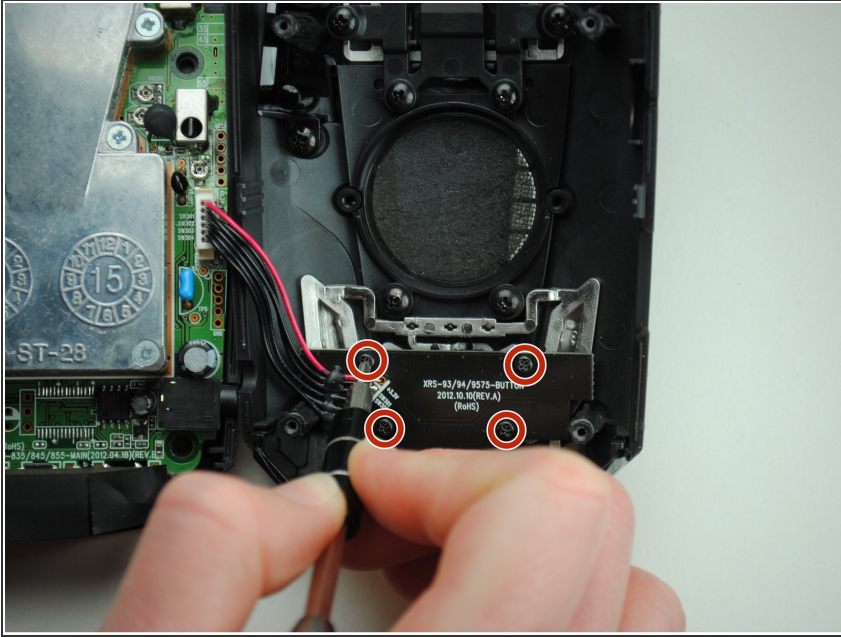
⚠ Be careful not to sever the wires. The buttonboard is connected to the motherboard by the wires.

Step 4



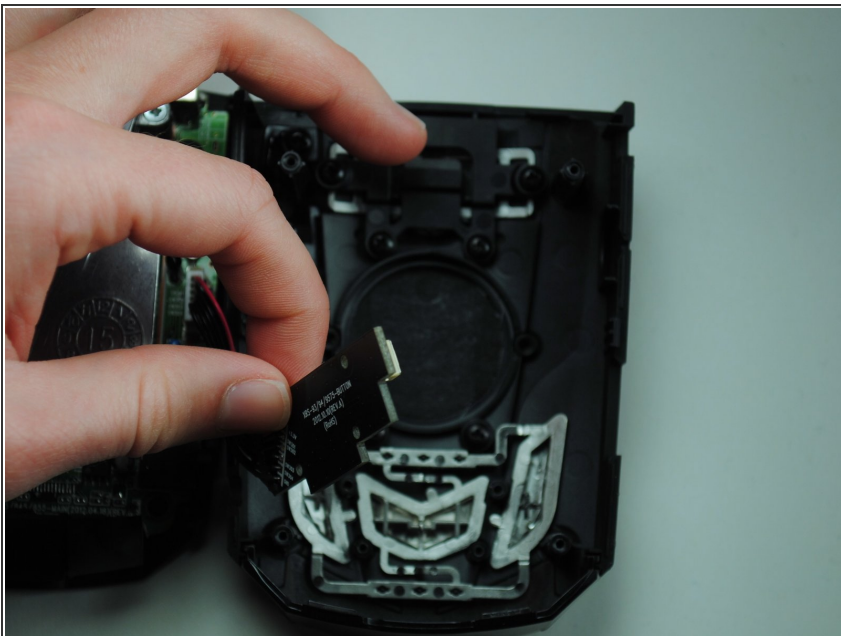
- Remove the windshield bracket mount.

Step 5 — Buttonboard



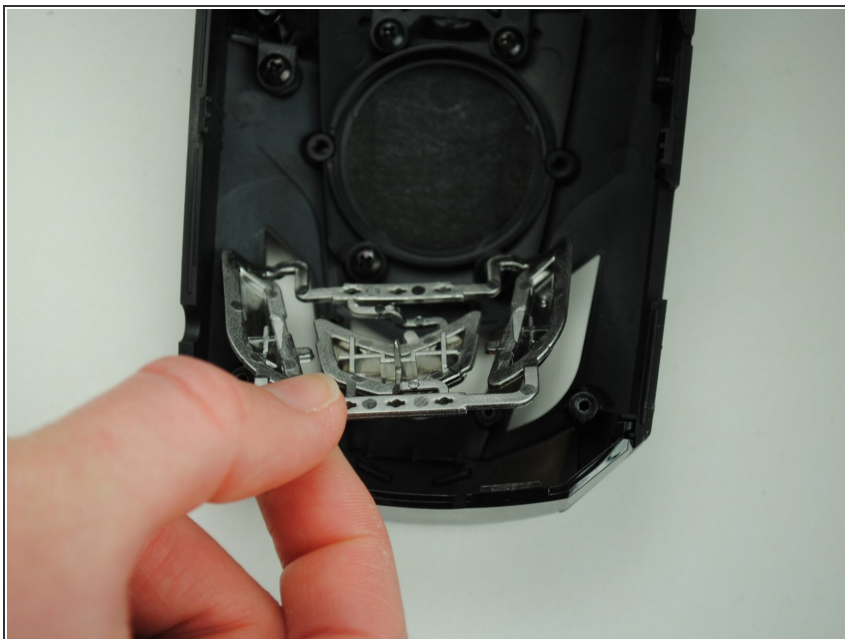
- Remove the four 4.8 mm Phillips #00 screws from the buttonboard.

Step 6



- Lift buttonboard to expose silver button plate.

Step 7 — Buttons



- Remove the silver button plate by gripping one of the corners and pulling up.

Step 8 — Display Screen



- Lift the front black plastic display screen.

To reassemble your device, follow these instructions in reverse order.