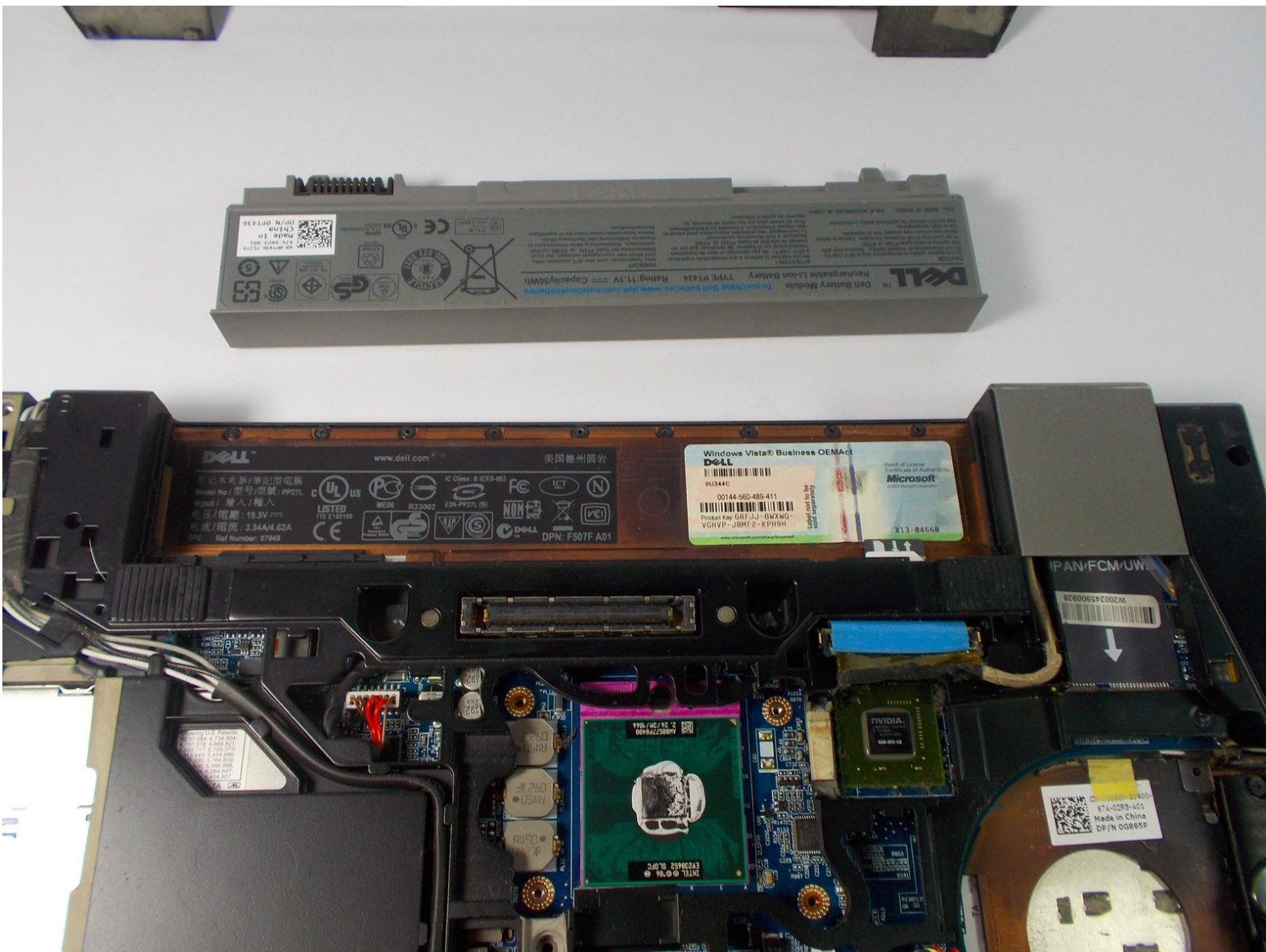




Dell Latitude E6400 Battery Replacement

Battery issues could be the cause of a dead battery or the battery will not hold its charge. This will bring you through how to remove the old battery and replace it with the new battery.

Written By: Kyle Frisco



INTRODUCTION

I am going to teach you how to remove the old and defective battery, then how to install the new battery . This will be a very easy and simple process requiring very little tools.



PARTS:

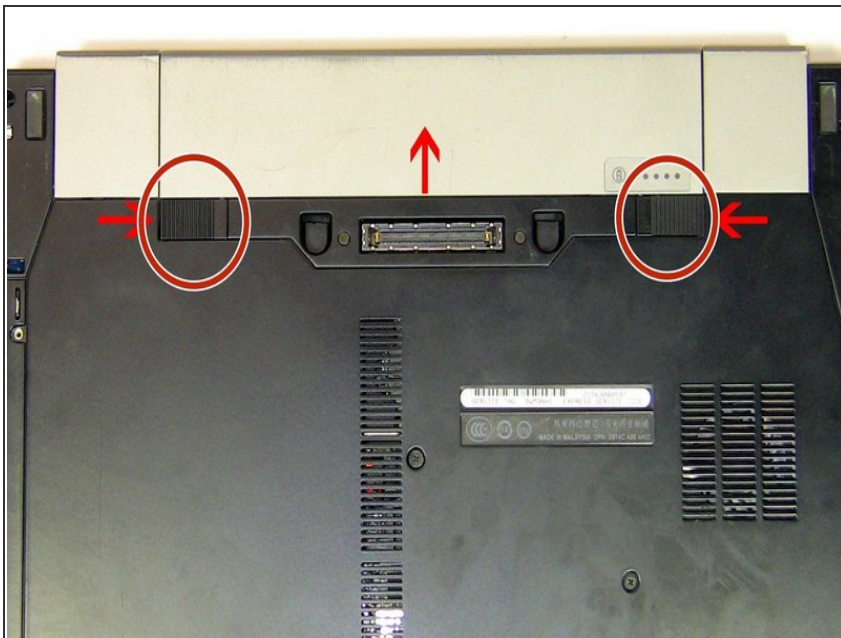
- [Dell latitude E6400 Battery](#) (1)
-

Step 1 — Battery



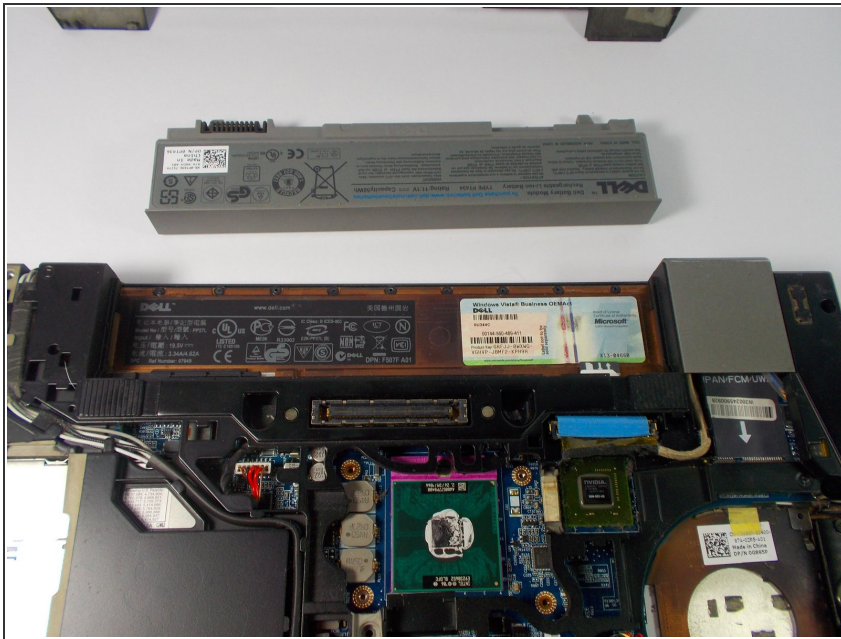
- First, turn off your laptop and disconnect any external adapter.

Step 2



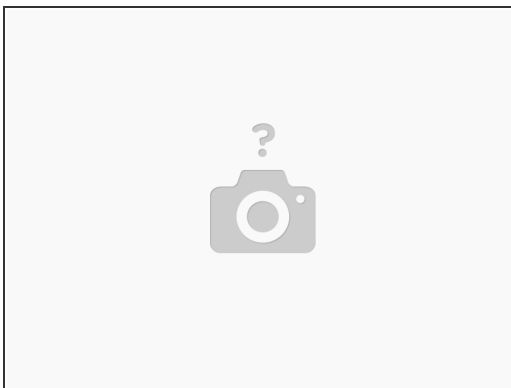
- Release the latch or latches connected to the battery that hold it in place.

Step 3



- Remove the old battery from its storage bay.

Step 4



- Plug in the external AC adapter to fully charge the new battery.

To reassemble your device, follow these instructions in reverse order.