



Leica Z2X Lens Cover Replacement

Written By: Kenny





TOOLS:

- [.8 inch Screwdriver](#) (1)
-

Step 1 — Remove the Bottom Screws



- Carefully unscrew the four Phillips #0 screws on the bottom of the camera.
- ⓘ There is a screw located inside of the tripod hole (large circle.) Make sure the screw is removed from there too!

Step 2 — Open the Back Door



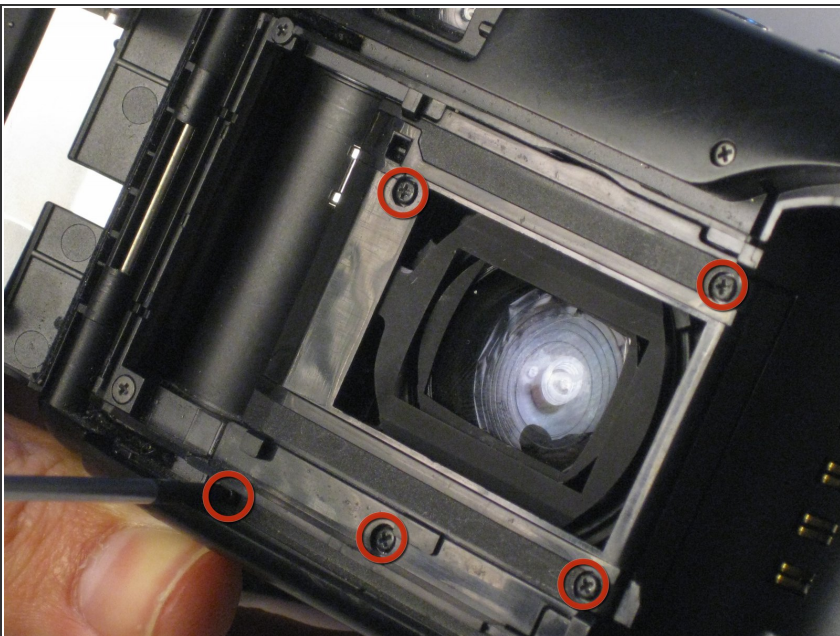
- Open the back door on the camera by pushing down on the door latch.

Step 3 — Remove the Bottom Plate



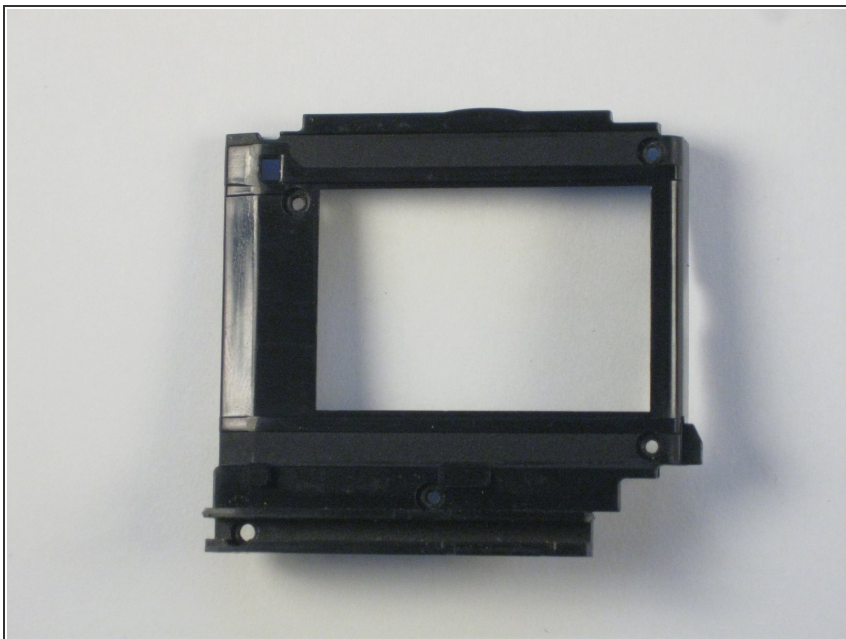
- Apply pressure to the bottom plate and it will pop off.
- From here, you can replace the bottom plate, or continue on to further steps.

Step 4 — Lens Motor



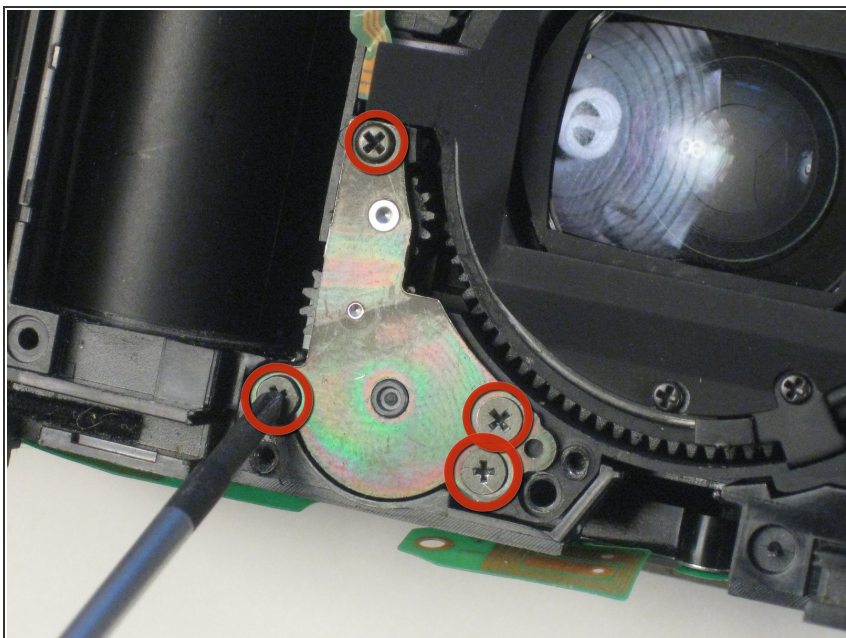
- Having opened the camera and removed the bottom plate, unscrew the five screws marked in the picture.
- The screw marked in blue is a tiny bit harder to find because it's in a crevice. Don't miss it!

Step 5



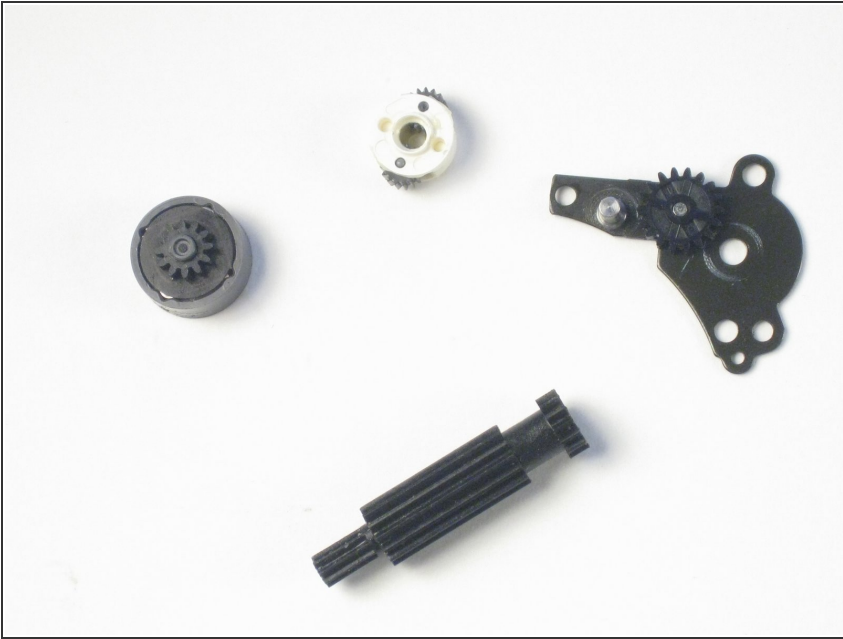
- Apply pressure until the piece you unscrewed in the last step pops off.

Step 6



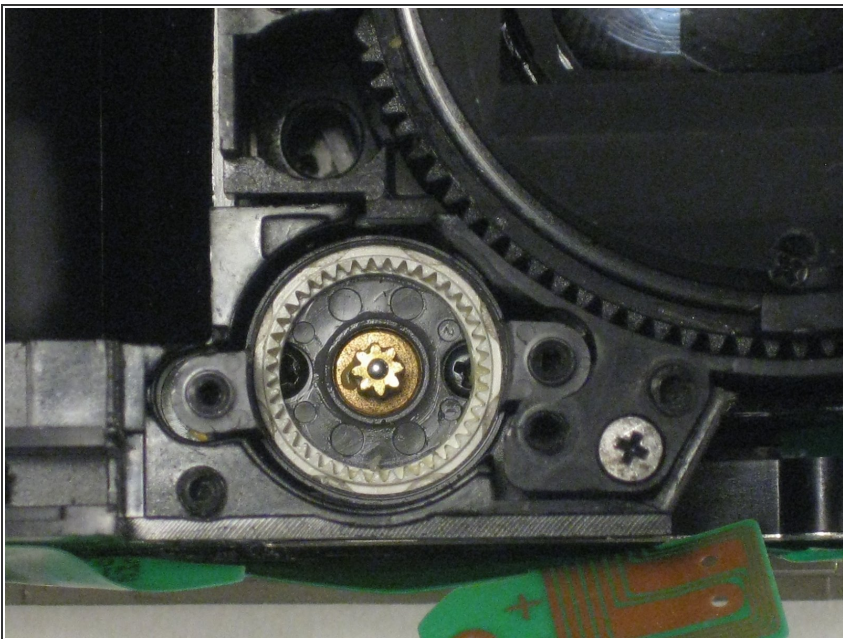
- Unscrew the four screws on the back of this piece to the lower-left corner of the lens.

Step 7



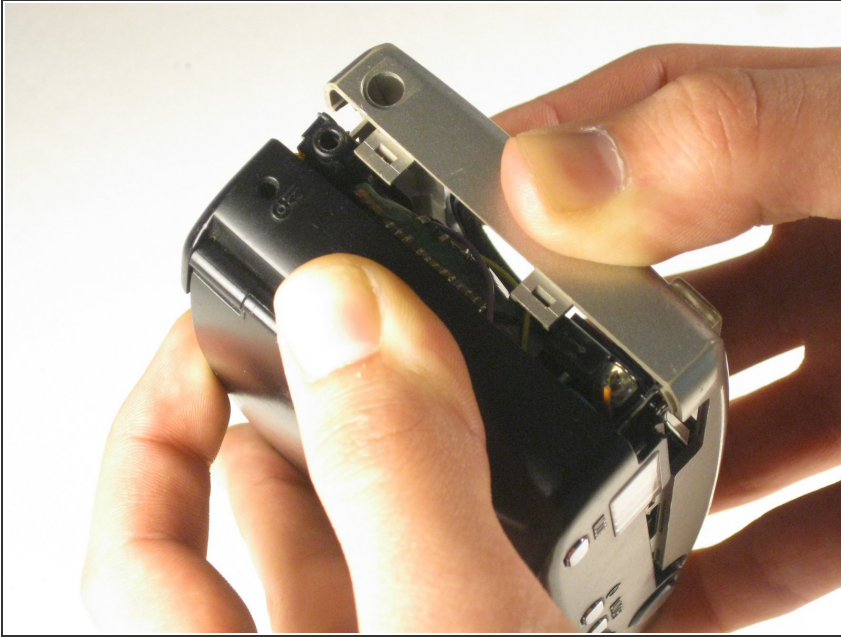
- Removing the lens motor cover, you should be left with these four pieces.

Step 8



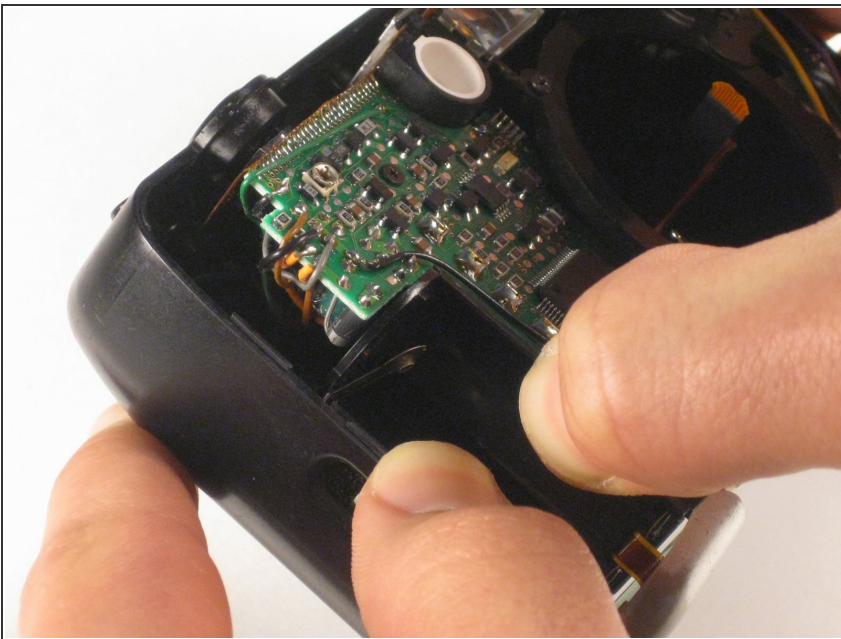
- Located underneath these four pieces is the lens motor.

Step 9



- Now that you've removed the bottom plate, you can pull apart the front and back covers.
- Start with the front cover and, by applying pressure (perhaps a lot of pressure), snap off the front cover.

Step 10



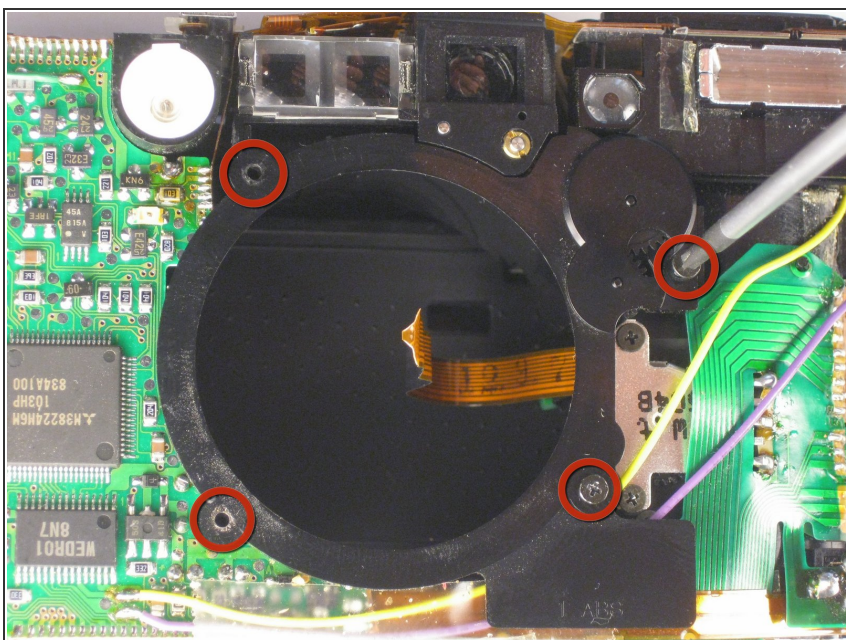
- Next, the back cover.
 - Apply pressure to remove the back plate.
- ⚠ Be careful of the buttons on the top of the camera falling off, they are small parts and CAN get lost easily.**
- The best way to remove the back is to stick your thumbs on either side of the battery socket and separate from there.

Step 11



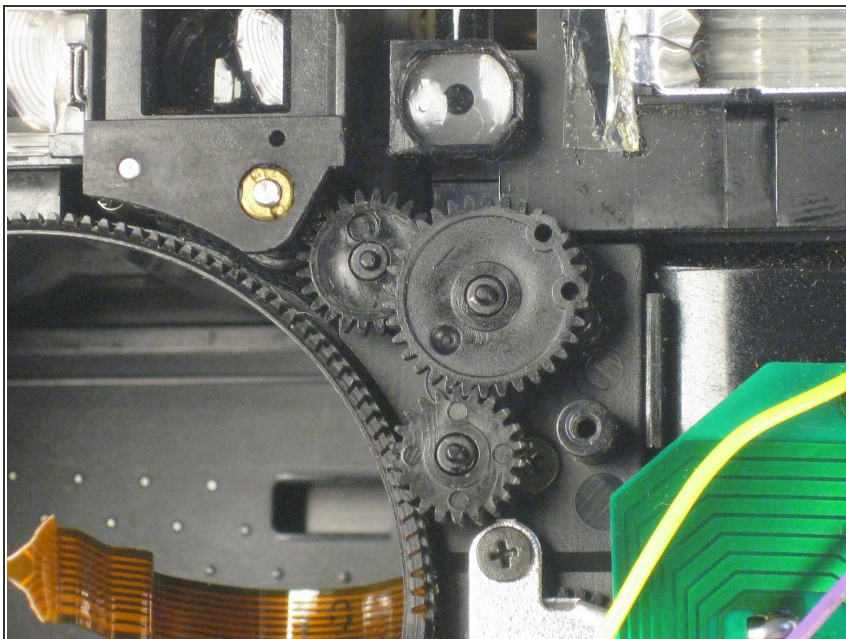
- You should now have removed the front and back plates.

Step 12



- Remove the four screws holding on the front panel surrounding the lens.

Step 13



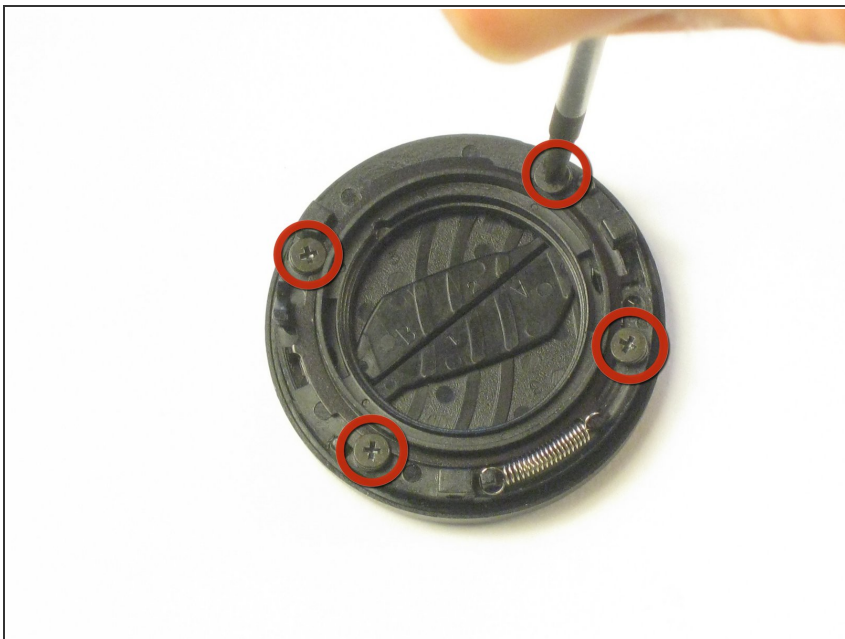
- Remove the three gears under the panel you removed in the last step and the lens motor should be able to be removed.

Step 14 — Lens Cover



- Now that the lens motor has been removed, you can apply pressure to the back of the lens and push it out.
- From here, locate the three screws near the front of the lens.
- Unscrew these three screws.

Step 15



- From here, you can pull out the small disk containing the lens cover.
- Unscrew the four screws on the back and pull the two pieces of the disk apart.

Step 16



- From here, you can replace any broken parts in the lens cover.

To reassemble your device, follow these instructions in reverse order.