



# HP LaserJet 1160 or 1320 Cartridge Door Replacement

Written By: jdp23





## TOOLS:

- [Metal Spudger Set](#) (1)
- [Phillips #0 Screwdriver](#) (1)



## PARTS:

- [HP LaserJet 1160 or 1320 Cartridge Door](#) (1)

## Step 1 — Left Side Cover



- Pull on the two tabs on the back of the printer to release the left side cover.
- Remove the cover by rotating it towards the front of the printer.

## Step 2 — Right Side Cover



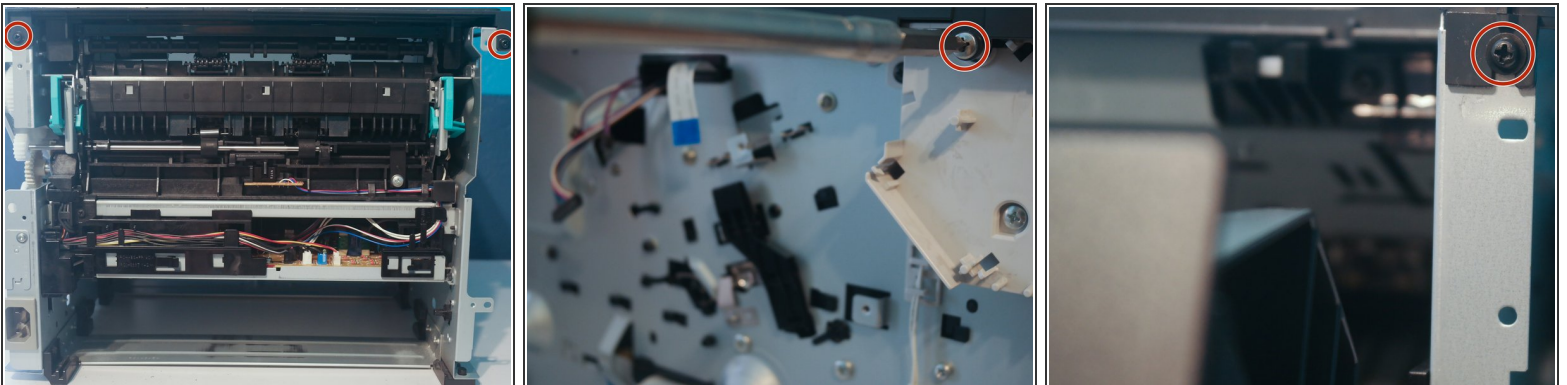
- With the printer turned so that the right side is facing upwards, use a metal spudger to disengage 3 tabs holding the right side cover in place.
- Lift the cover off of the printer.

### Step 3 — Back Cover



- Remove 4 screws on the back of the printer.
- Remove the back cover.

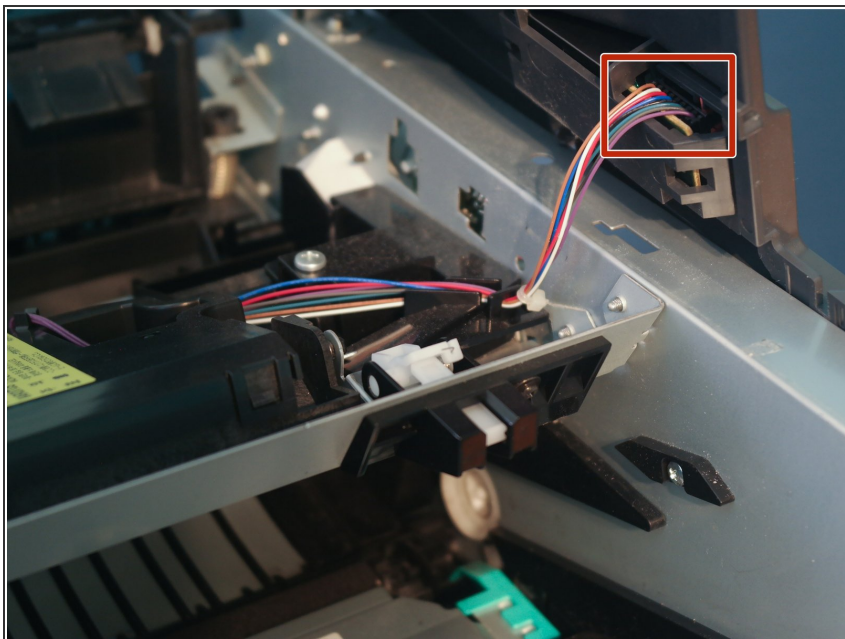
### Step 4 — Top Cover



- Remove 2 screws on the back of the printer, one on the left, and one on the front.
- i* The second image shows the formatter removed, but it is not necessary to remove the formatter to replace the top cover.

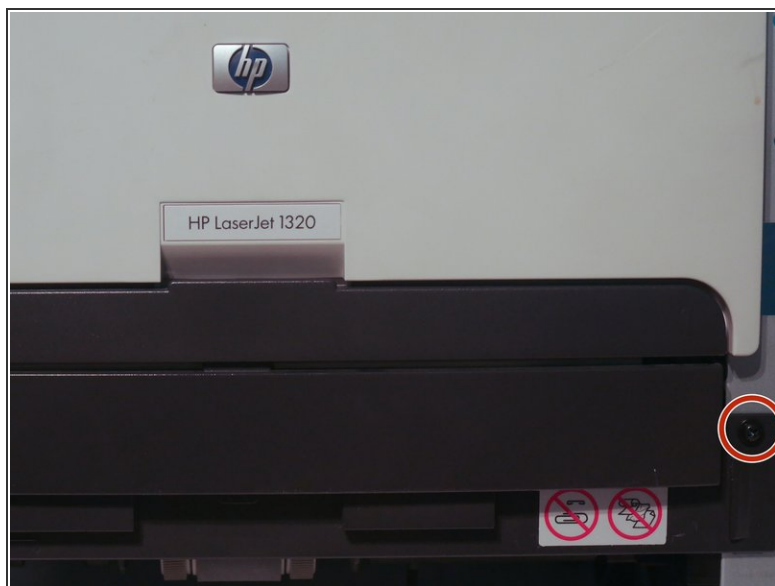
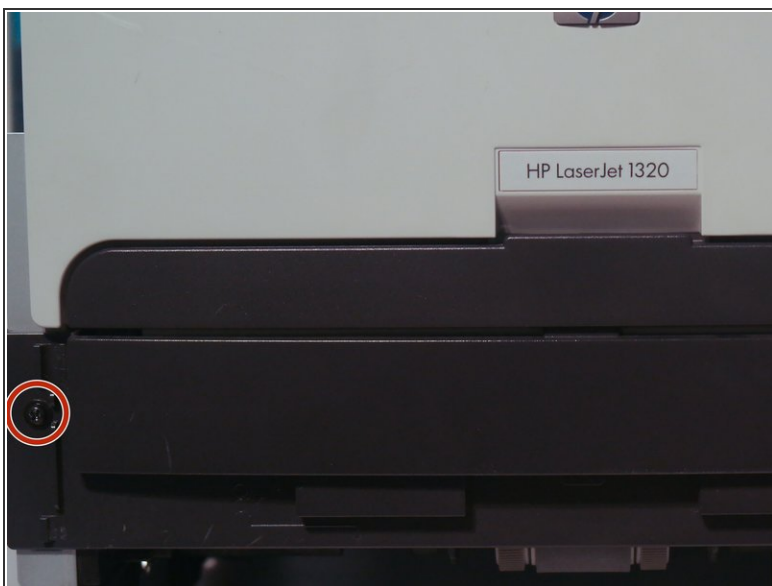


## Step 5 — Top Cover



- Disconnect the control panel cable and remove the top cover.

## Step 6 — Cartridge Door



- Remove 2 screws from the front of the printer.
- Remove the cartridge door.

To reassemble your device, follow these instructions in reverse order.