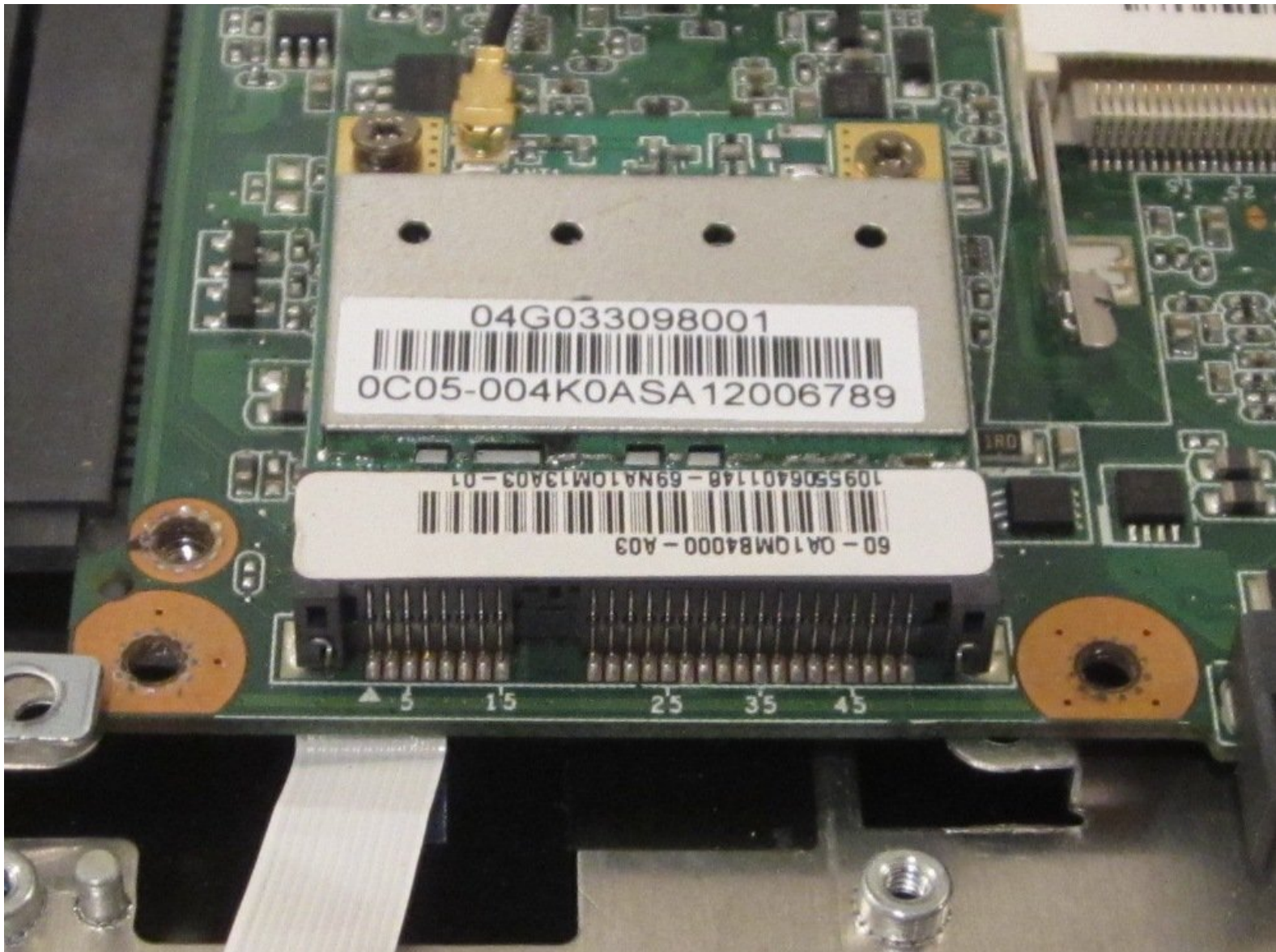




Asus Eee PC T101MT Wireless Network Interface Card Replacement

This guide will help you replace your wireless card.

Written By: Jarnell Miranda



INTRODUCTION

If you would like to replace your wireless NIC then this is the guide that you have been looking for.

TOOLS:

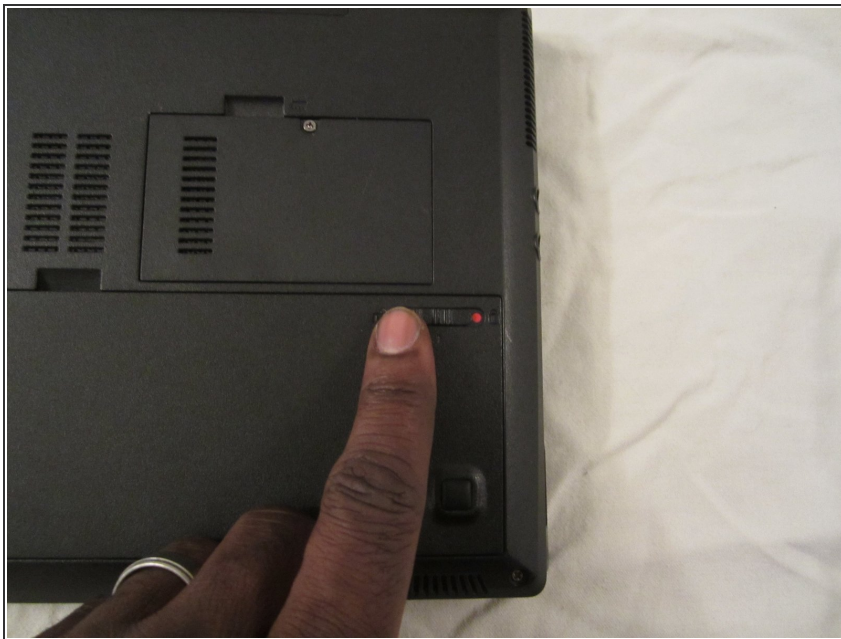
- [iFixit Opening Tools](#) (1)
 - [Spudger](#) (1)
 - [Phillips #0 Screwdriver](#) (1)
-

Step 1 — Battery



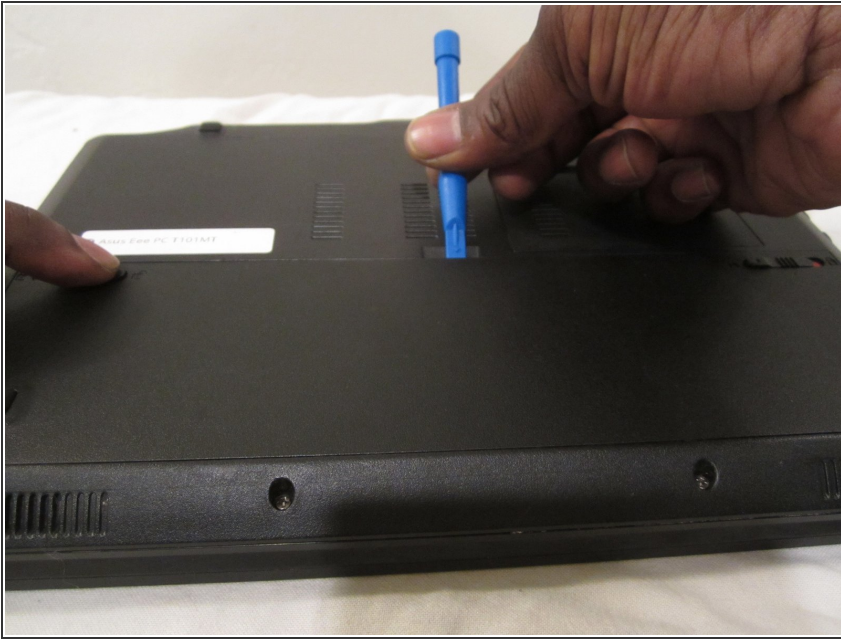
- ⚠ Before you begin, make sure your device is powered off and not connected to the power supply.
- Turn the tablet over and position it so it matches the picture.

Step 2



- Locate the sliding tab on the right and slide it to the left in order to unlock the battery.

Step 3



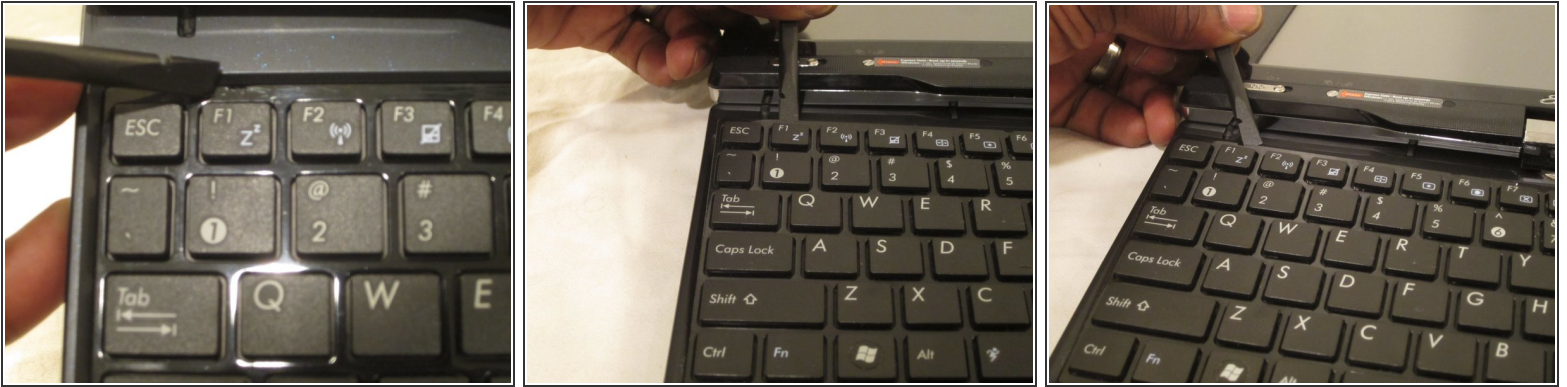
- Use a plastic opening tool to lift the battery up as you slide the tab on the left to the right.

Step 4



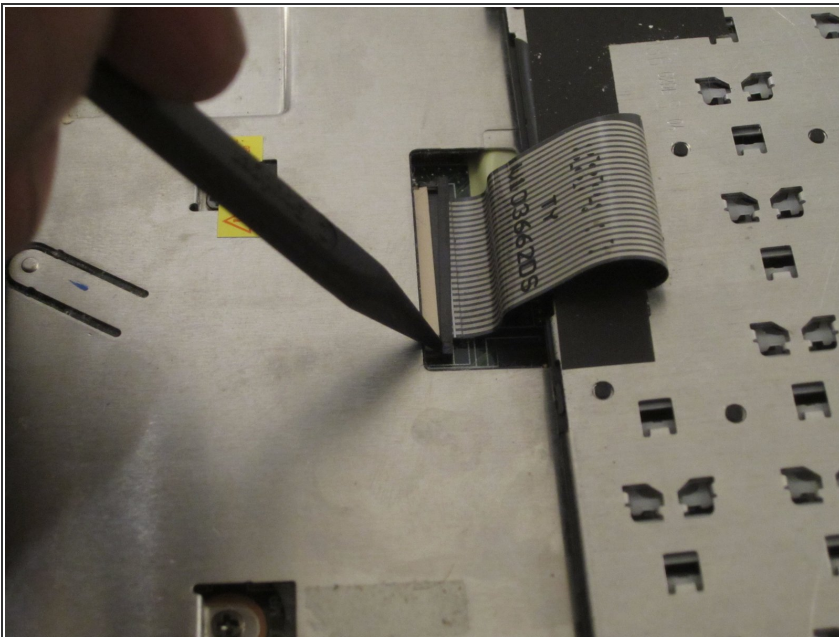
- Lift the battery out of the device.

Step 5 — Keyboard



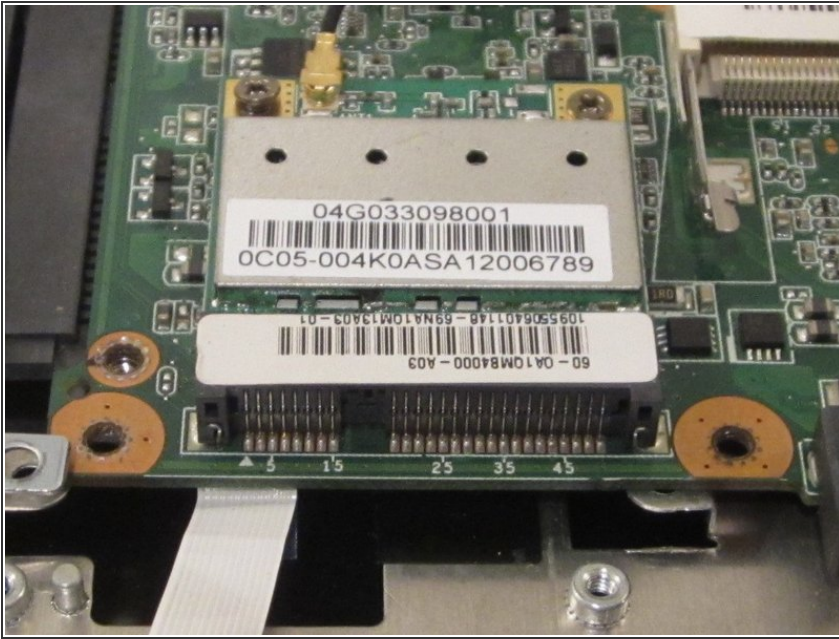
- Turn the tablet over and open it up. Insert a nylon spudger into the slots above F1, F6, F10 to pry up the keyboard.

Step 6



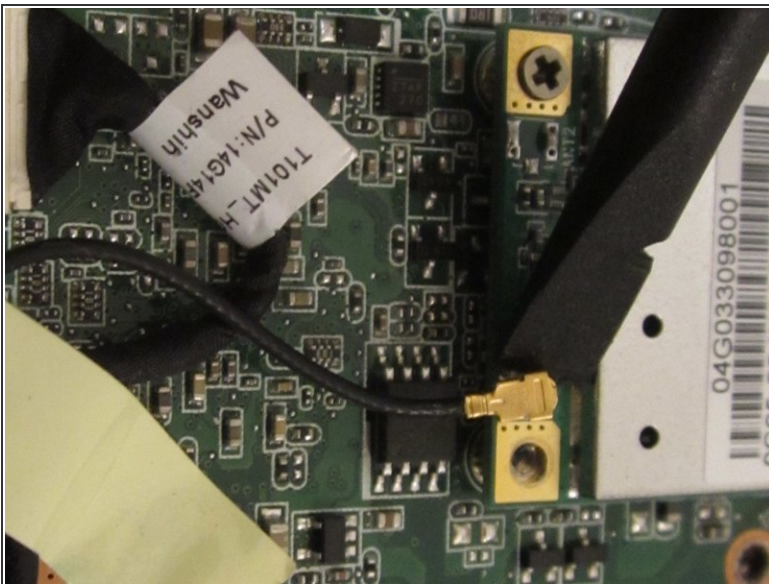
- Once you have the keyboard out, use the nylon spudger to remove the connection. You can now replace the keyboard.

Step 7 — Wireless Network Interface Card



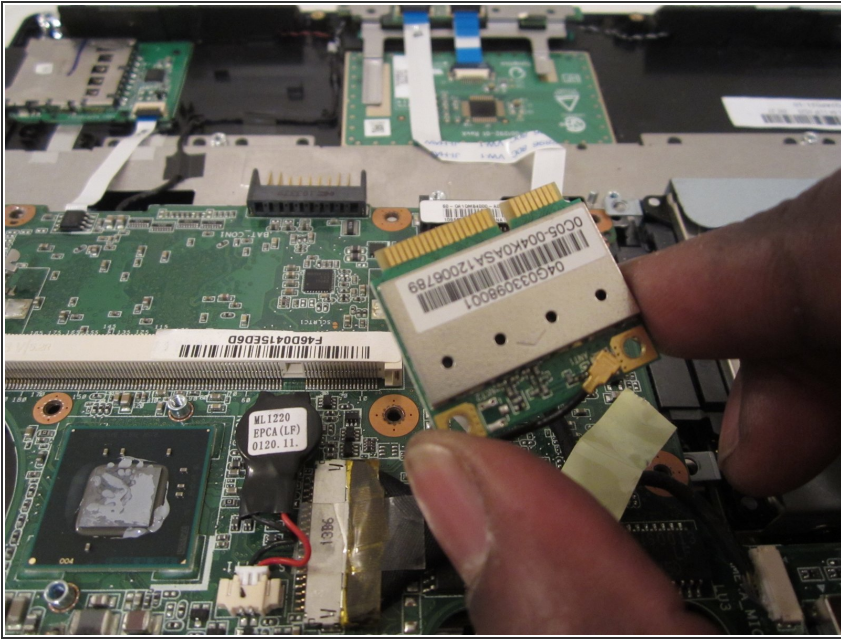
- Locate the wireless NIC (network interface card).

Step 8



- Use a nylon spudger to lift the wireless antenna from the NIC and remove the screws.

Step 9



- Remove and replace the wireless card.

To reassemble your device, follow these instructions in reverse order.