



BlackBerry Curve 8520 Keyboard Cover Replacement

Replace the keyboard cover of your BlackBerry Curve 8520.

Written By: Matt



INTRODUCTION

Use this guide to replace the keyboard cover of your BlackBerry Curve 8520.



TOOLS:

- [iFixit Opening Tools](#) (1)
 - [T6 Torx Screwdriver](#) (1)
-

Step 1 — Back Panel



- Insert a plastic opening tool into the small notch on the rear cover of the phone.
- Pry the rear cover up from the phone.

Step 2 — Battery



- Locate the slit between the top of the battery and the casing.
- Gently apply pressure on the top of the battery to trigger the spring release.

Step 3 — Keyboard Cover



- Remove the two Torx T6 screws to the left and right of the battery.

Step 4



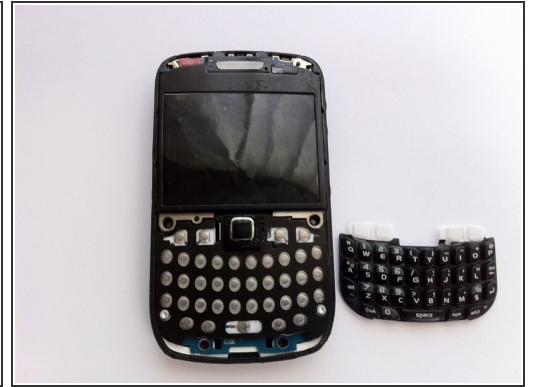
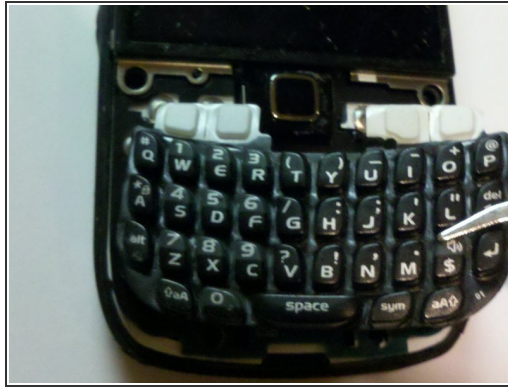
- Using hairdryer or heat gun, warm the front panel to soften the adhesive beneath.
- Starting from one side, use a plastic opening tool to pry up the screen cover.
- ⚠ Work carefully to avoid bending the screen cover.
- Once one side is loose, gently peel up the entire cover.

Step 5



- Insert the plastic opening tool in the seam along the side of the device.
- Slide the tool along the length of the seam, applying moderate force with the plastic opening tool.
- Carefully remove the faceplate.

Step 6



- Remove four T6 Torx screws from the front of the phone.
- Using tweezers, remove the keyboard buttons from the phone.

To reassemble your device, follow these instructions in reverse order.