



Fujifilm FinePix Z90 Lens cover/case Replacement

This replacement guide is used when the lens cover does not slide up to turn the camera on.

Written By: Sam Clark



INTRODUCTION

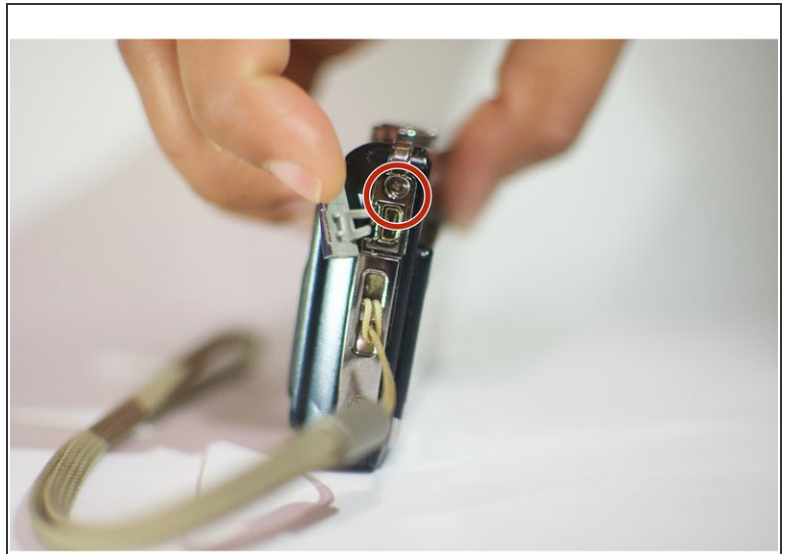
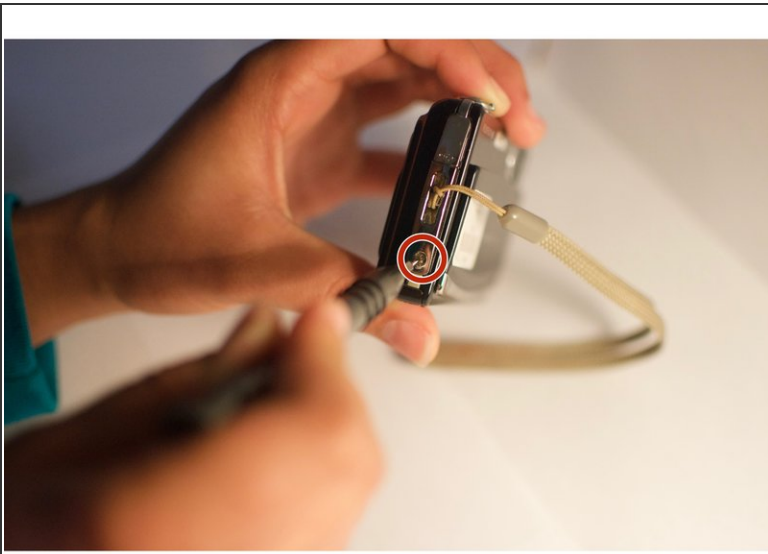
If your camera case has scratches or dents, it can be replaced by unscrewing the case of it. You need to take out some screws on the left side, right side and bottom part.



TOOLS:

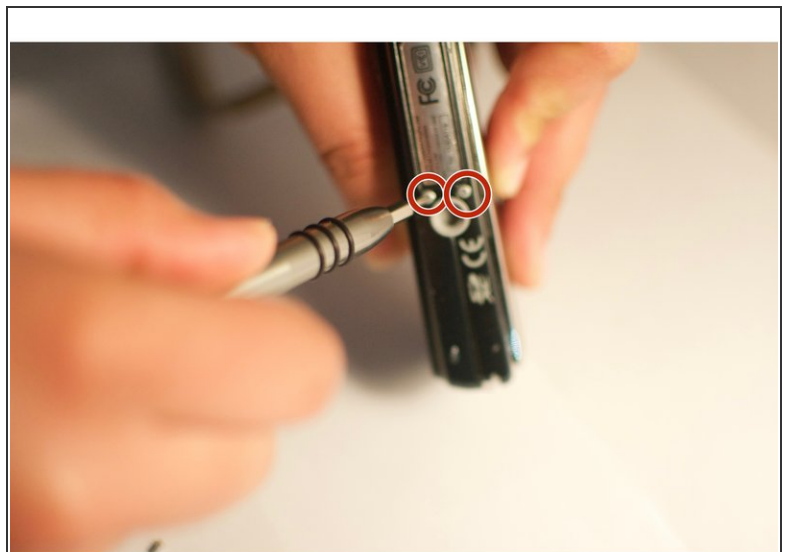
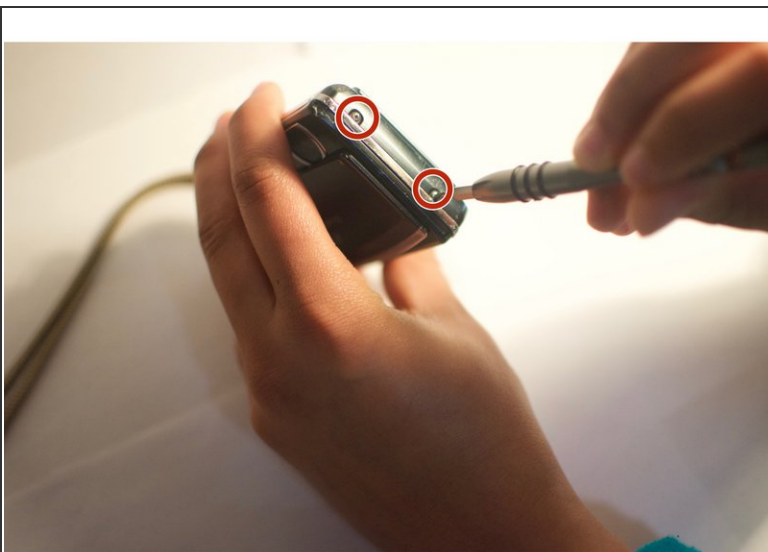
- [Phillips #000 Screwdriver](#) (1)
 - [Magnetic Screw Collector](#) (1)
-

Step 1 — Lens cover/case



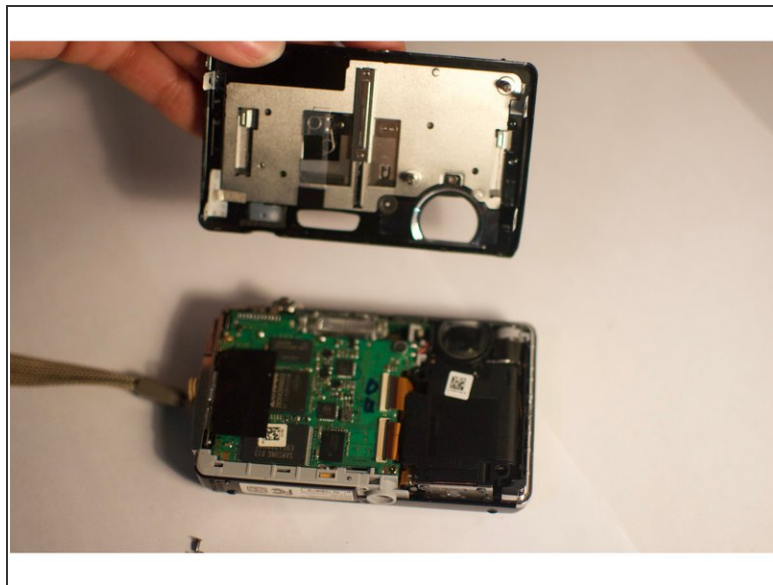
- i Use a small #000 Phillips screwdriver to take the screws out. Keep all the screws in a container and the two different types separate.
- Remove the two screws on the right side. On the same side there is USB connector, open that little door and unscrew the little screw inside of it.

Step 2



- Take the two screws on the left side and the two screws on the bottom of the camera.

Step 3



- By now you will have the front case and the back case separated from each other.

To reassemble your device, follow these instructions in reverse order.