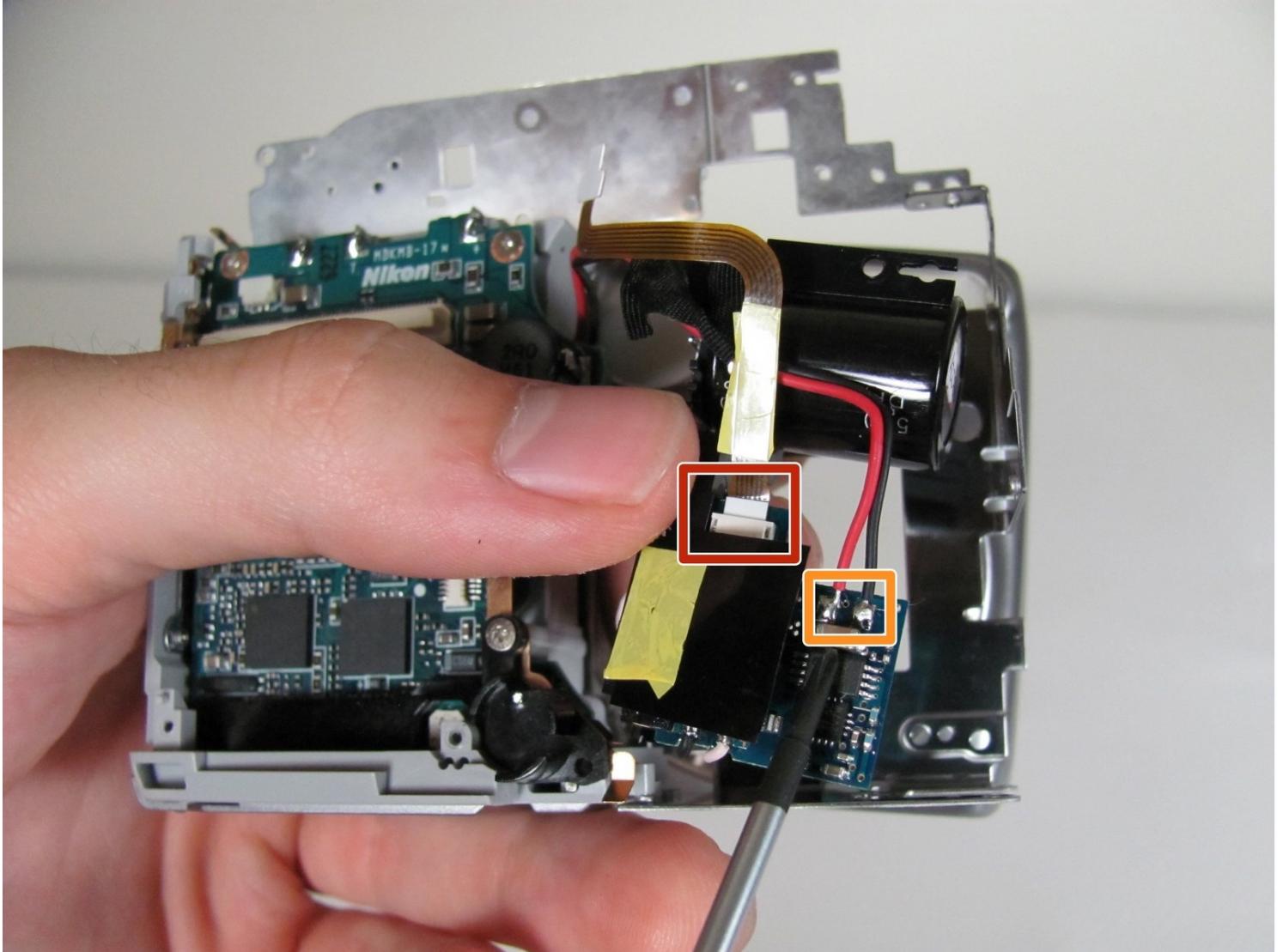




# Nikon Coolpix P4 Flash Bulb Replacement

In this guide we will take you through...

Written By: Luke Baumann



# INTRODUCTION

In this guide we will take you through replacing a Nikon Coolpix P4 Flash Bulb.

If the flash is not working on your camera, then the flash bulb should be replaced.

Step 30 requires you to unsolder red and black wires. You can use this guide on [how to solder and desolder connections](#).

After you replace it with a new flash bulb, follow these steps in reverse order to reassemble.

---

## 🔧 TOOLS:

Phillips #00 Screwdriver (1)

Anti-Static Project Tray (1)

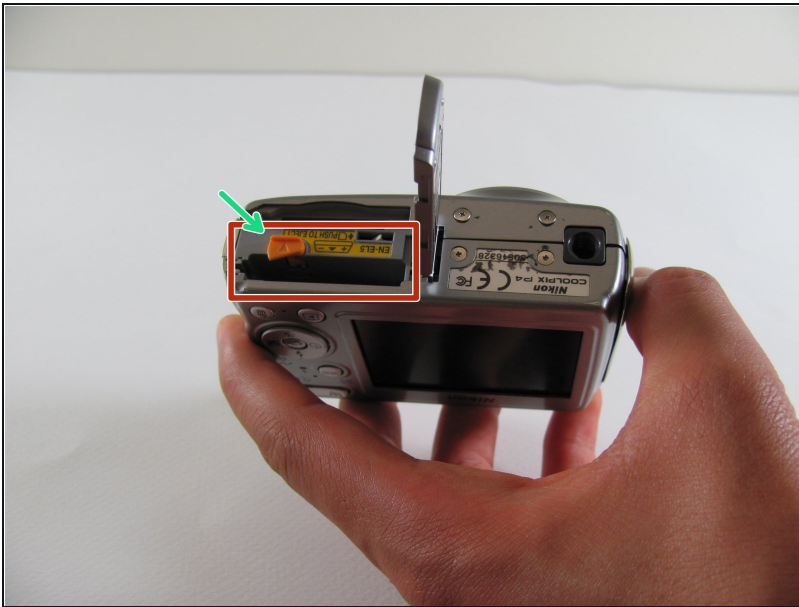
---

## Step 1 — Battery



- Flip the camera upside down (have the side with the buttons facing away from you)
- Look for the side with the triangle icon with three lines in it, this is the battery door. Add pressure and slide this door slightly until it clicks and pops open.

## Step 2



- Once the door clicks, you can open it to reveal the slots holding the memory card and the battery.
- Focusing on the larger slot, this holds the battery. Push the orange tab away from the slot, this will eject the old battery if one was previously inside.
- Once this slot is open, you can place the new battery inside.

★ Make sure to close the orange tab to secure it in place!

## Step 3 — LCD Screen



- Remove the four 2.2 mm screws located on the bottom of the camera.



## Step 4



- Remove the two 2.9 mm screws from the side panel.
- Remove the side panel.

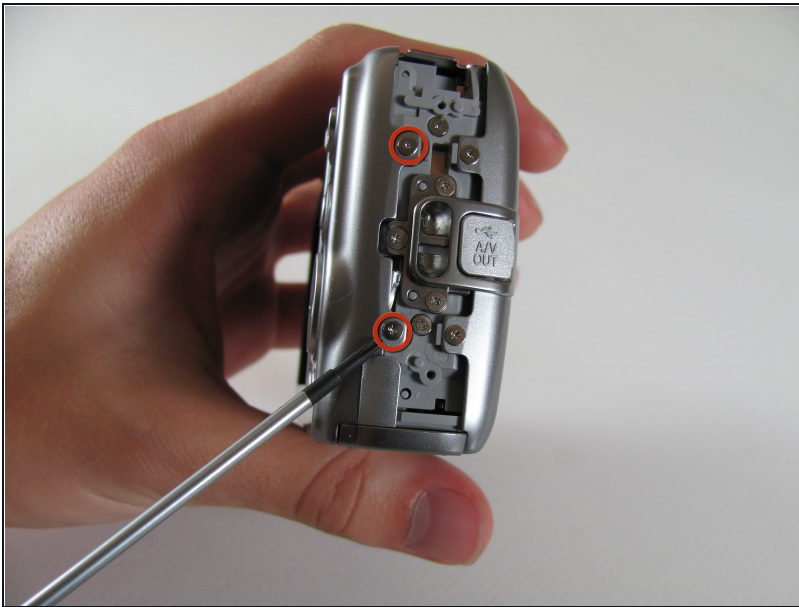
## Step 5



- Remove the two 5 mm screws from the right side panel.
- Remove the panel from the right side.
- Remove the single 2.1 mm screw set underneath the panel.



## Step 6



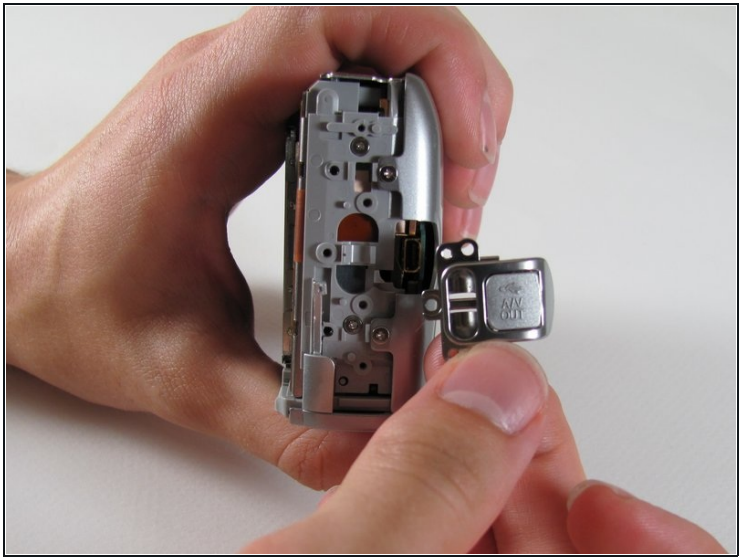
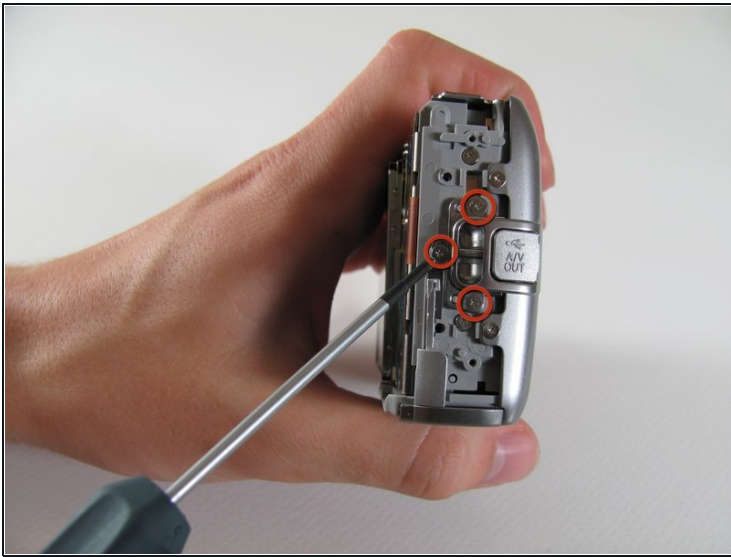
- Remove the two 4.8 mm screws attaching the back panel to the body on the left side.

## Step 7



- Gently pull off the back cover.

## Step 8



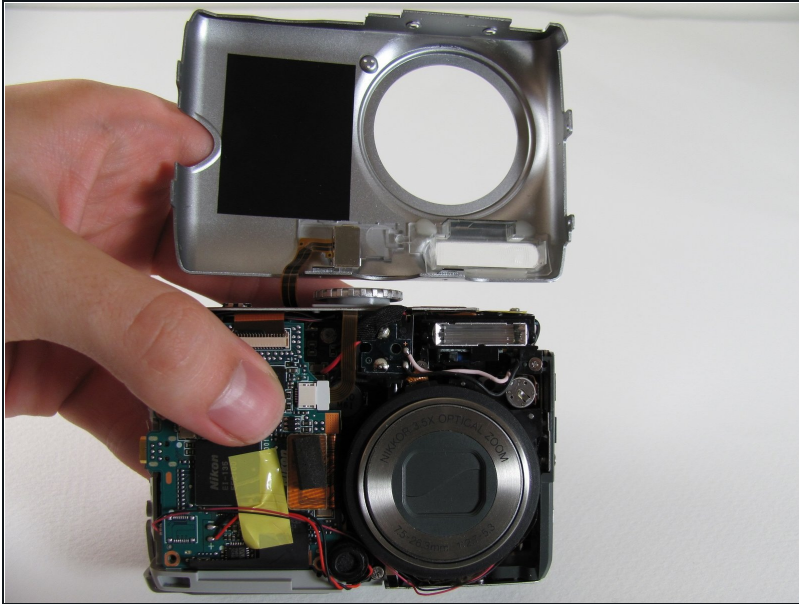
- Remove the three 4.8 mm screws from the A/V out tab on the left side.
- Remove the tab.

## Step 9



- Remove the two 4.6 mm screws attaching the front panel to the body on the left side.

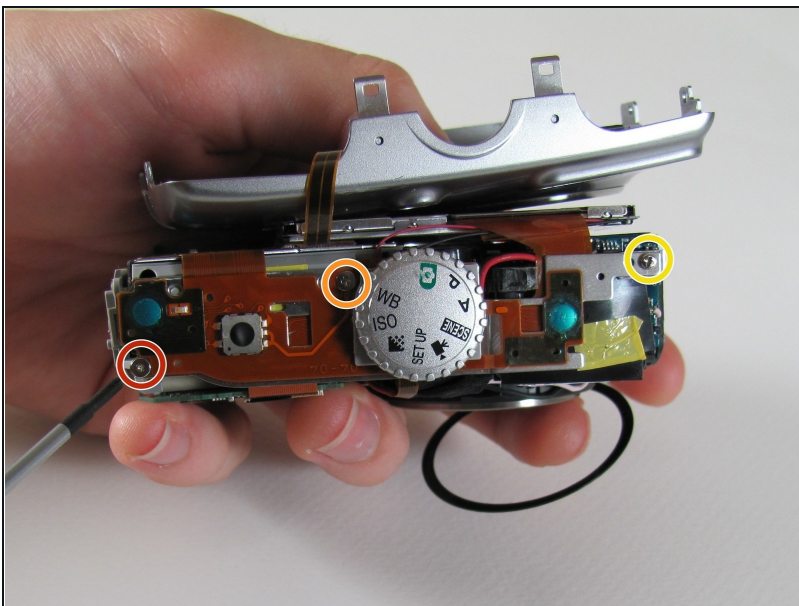
## Step 10



- Flip up the front panel.

⚠ Potential for device damage.  
There should be wires still  
attaching the panel to the body.  
**DO NOT TRY TO PULL OFF  
COMPLETELY.**

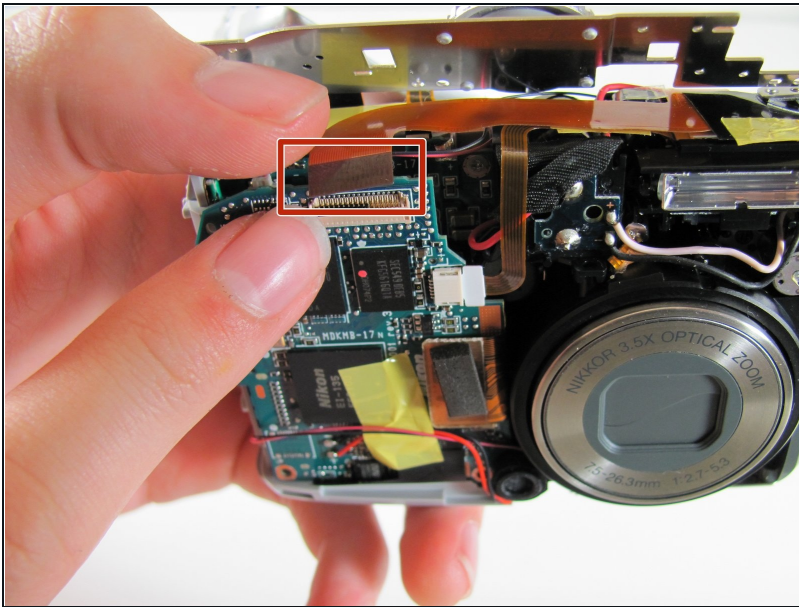
## Step 11



- Remove the 2.2 mm screw.
- Remove the 2.9 mm screw.
- Remove the 2.1 mm screw.



## Step 12



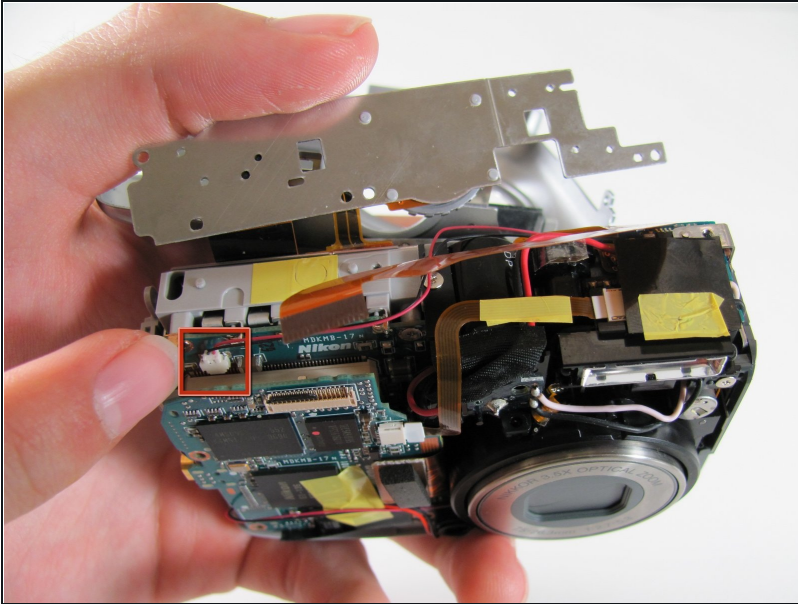
- Carefully pull the orange LCD connector up and out of the port.
- ⓘ Be careful to pull vertically while pushing the black tab upwards

## Step 13



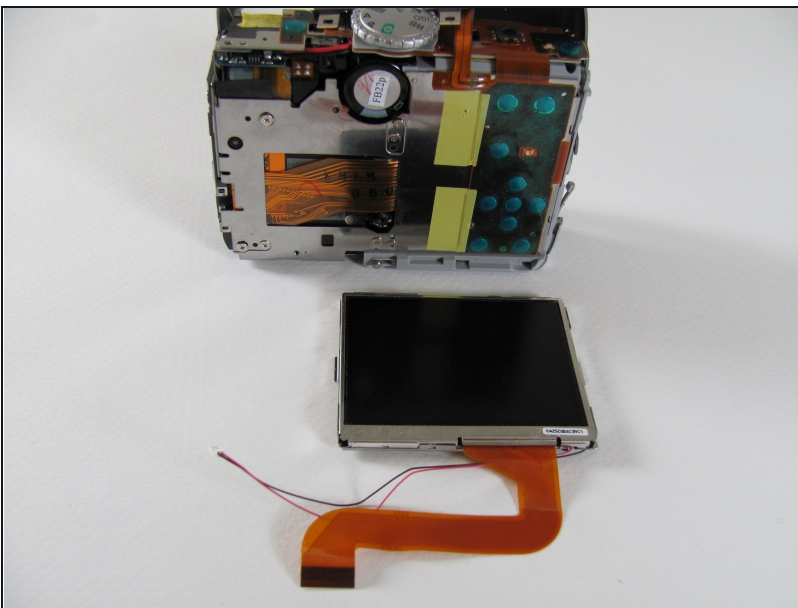
- Remove the 3.1 mm screw below the LCD.

## Step 14



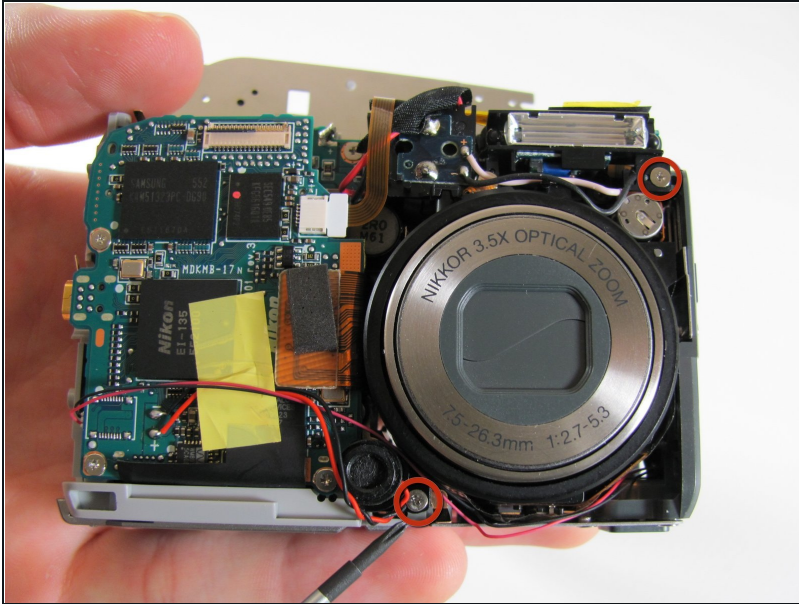
- Carefully pull out the plug connecting the LCD to the motherboard.

## Step 15



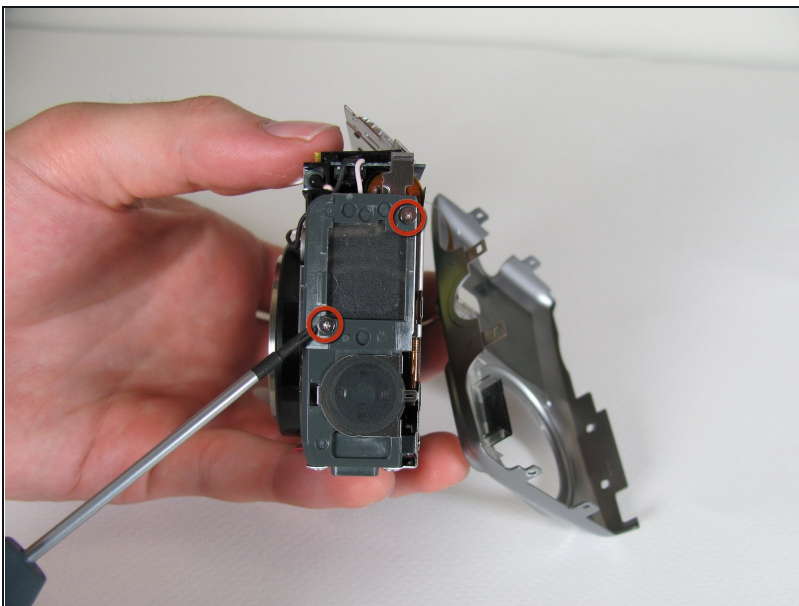
- Remove the LCD from the camera body.

## Step 16 — Motherboard



- Remove the two screws on the opposite sides of the flash.

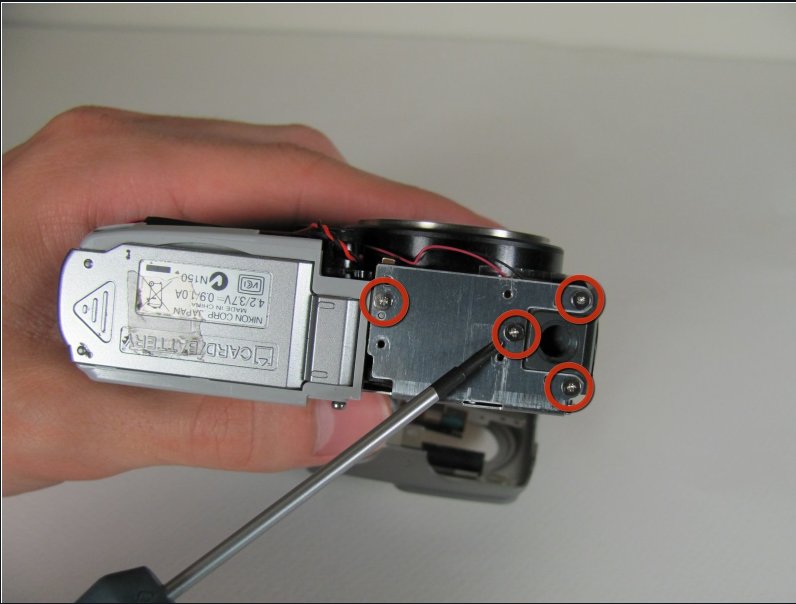
## Step 17



- Remove the two 2.9 mm screws on the right side of the camera.

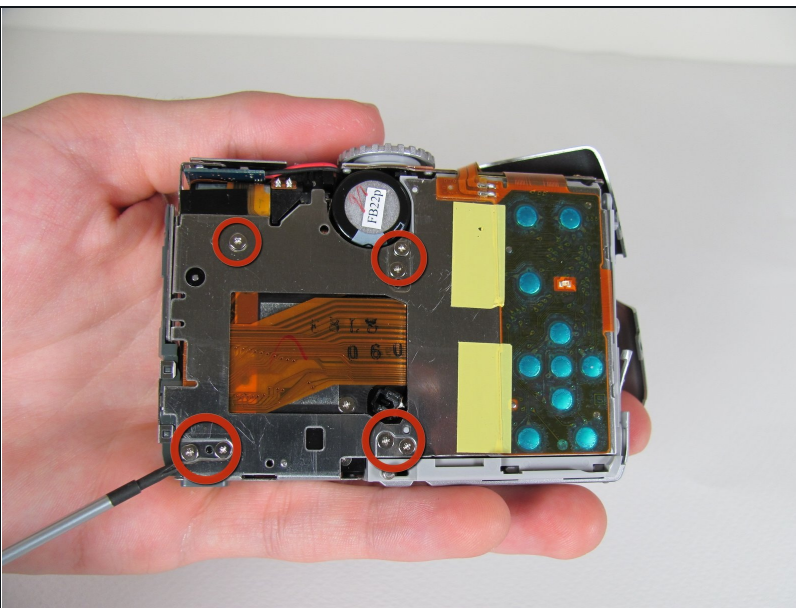


## Step 18



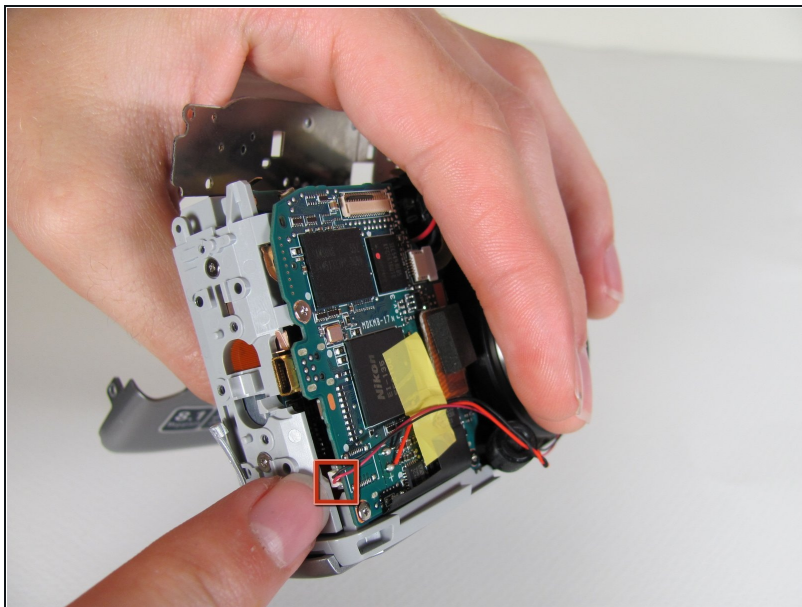
- Remove the four screws on the bottom of the camera.

## Step 19



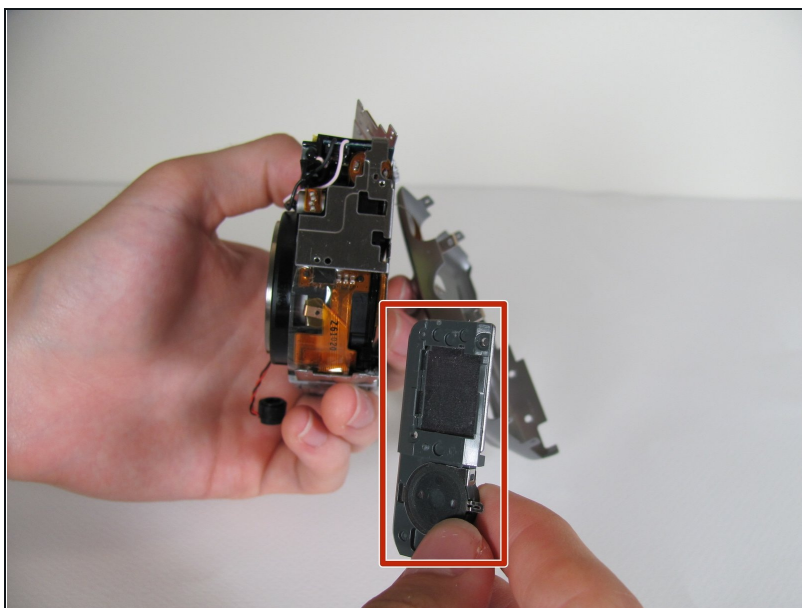
- Remove the seven 2.8 mm screws from the back of the camera.

## Step 20



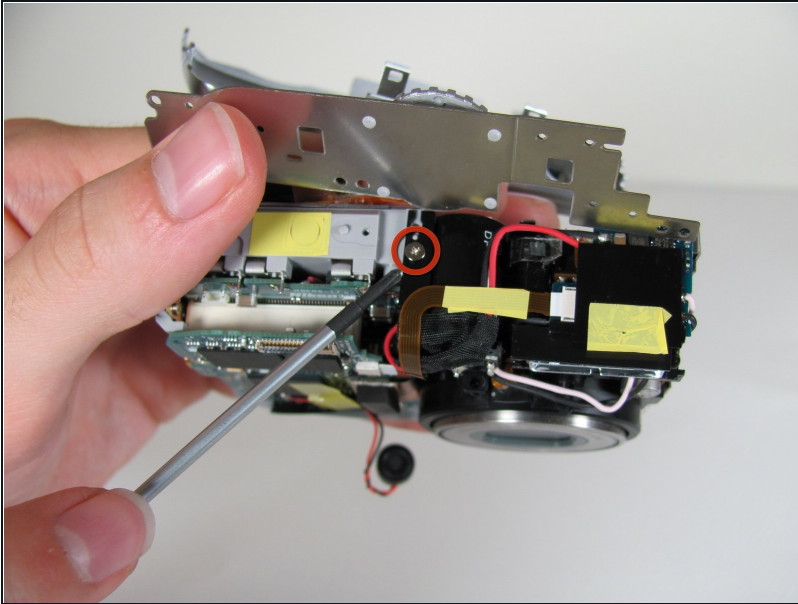
- Detach the cable that connects the lens to the left side of the motherboard.
- ① Firmly grasp the base of the cable and gently pull it from the socket.

## Step 21



- Remove the right panel.

## Step 22



- Remove the 2.8 mm screw from the top of the camera.

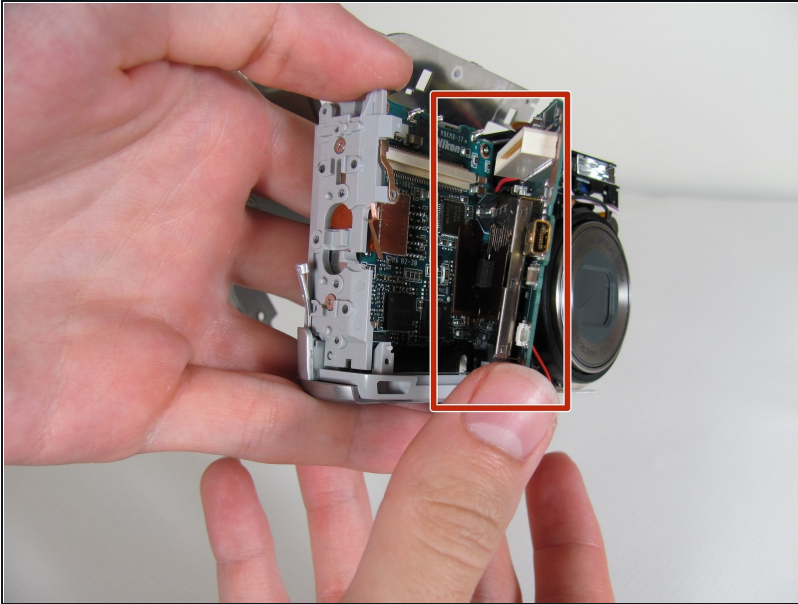
## Step 23



- Remove the three 2.8 mm screws from the motherboard.
- Detach the orange tab with the foam on top.
  - ⓘ It should click out of place.

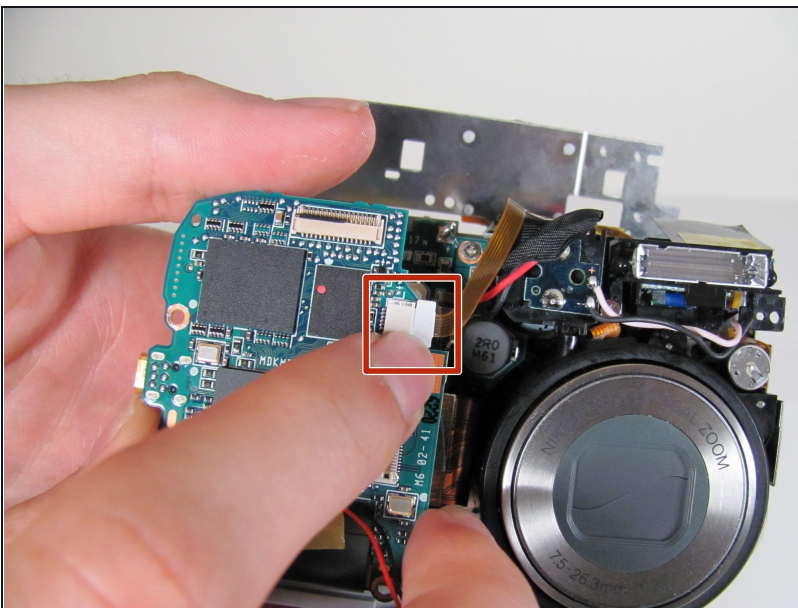


## Step 24



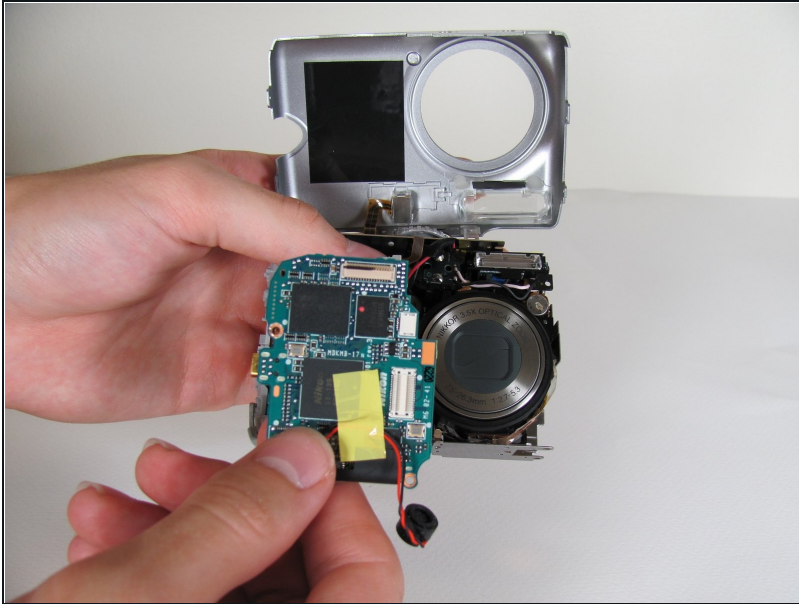
- Remove the motherboard by pulling it up and out of the port.

## Step 25



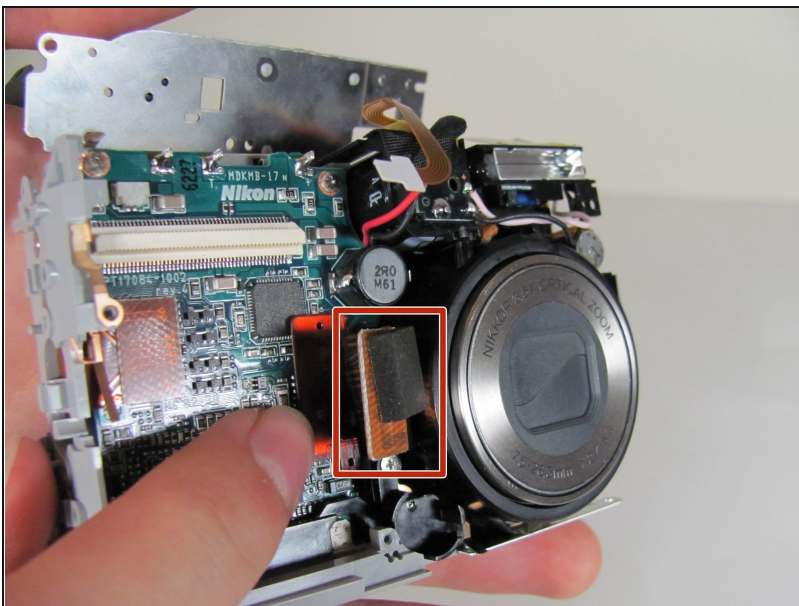
- Carefully remove the tab that connects the flash to the motherboard from the port by gently pulling the connector to the right and out of its port.

## Step 26



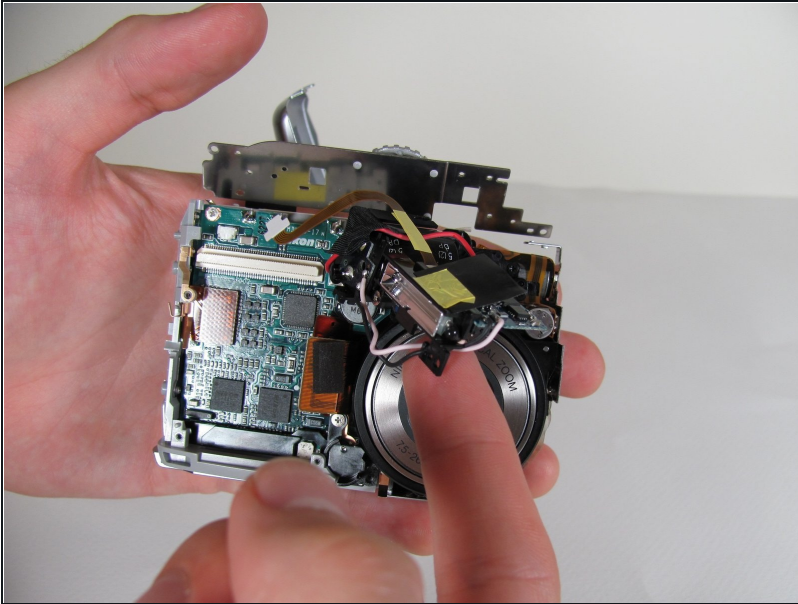
- Fully remove the motherboard from the camera body.

## Step 27 — Lens



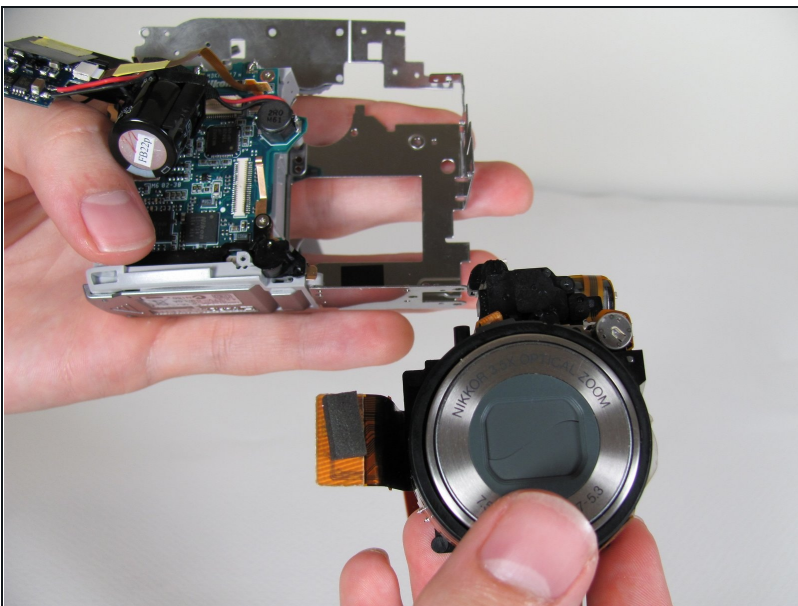
- Locate the orange plug on the right side of the lens.
- Carefully snap the plug out of place.
- ⓘ This piece is meant to snap in and out of place easily!

## Step 28



- Once the orange piece detaches, gently pull up the flash unit from its place in the camera.
- ① The flash unit will still be attached to the camera by a separate cord.

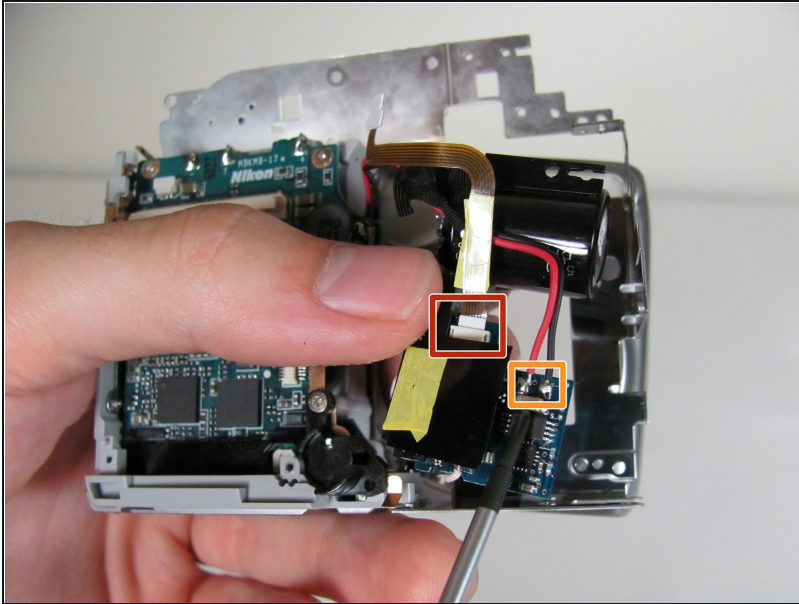
## Step 29



- Remove the lens from the rest of the camera.



## Step 30 — Flash Bulb



- Remove the tab connecting the flash to the motherboard by gently pulling the connector sideways out of its port, away from flash unit.
- Unsolder red and black wires.
- Remove the flash unit.

---

To reassemble your device, follow these instructions in reverse order.