



Samsung NX3000 Back Case Replacement

Use this guide to replace a damaged back case,...

Written By: Kelsea Weber



INTRODUCTION

Use this guide to replace a damaged back case, or open the case to access other components of your camera.

We highly suggest you use a [magnetic project mat](#) or an organization tray. This camera has **many** different types of screws and keeping them organized is key to proper reassembly.

TOOLS:

[Magnetic Project Mat](#) (1)


[Phillips #00 Screwdriver](#) (1)

[Tweezers](#) (1)

Step 1 — Battery



- Turn the camera upside down. Only remove the lens if you have to in order to access the battery compartment, as dust particles could easily enter the main body and fall onto the delicate sensor.
- Slide the button to the left to open the battery compartment.
- Push the blue button up to release the battery.

 The battery is not shown in these photos.

Step 2 — Lens Assembly



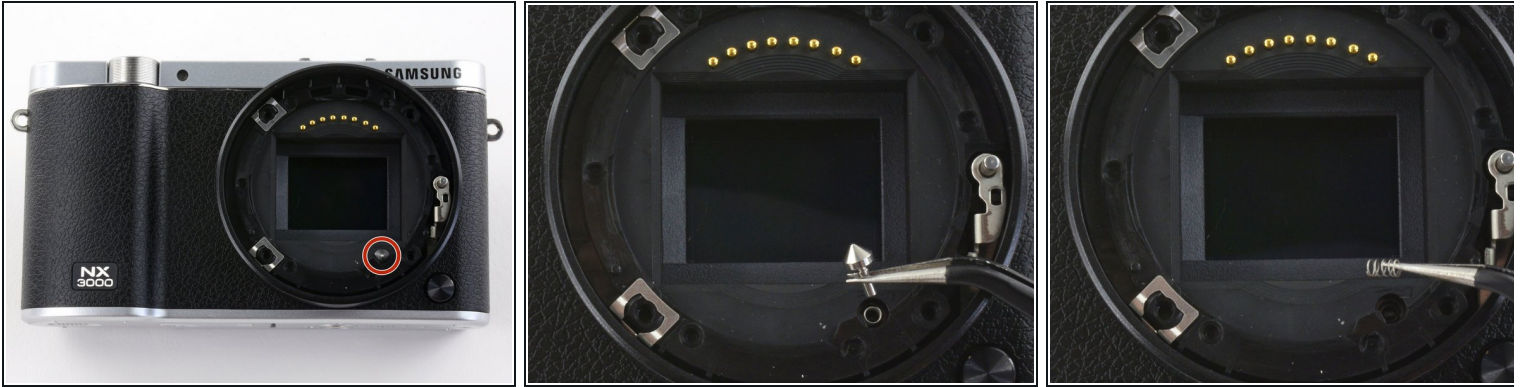
- Remove the four 7.3 mm Phillips screws from the front of the lens assembly.
- Remove the silver ring with tweezers.

Step 3



- Use tweezers to remove the black plastic ring and small metal ring inside the lens assembly.

Step 4



- Use tweezers to lift the pyramid screw and spring from the lens assembly.

Step 5 — Back Case



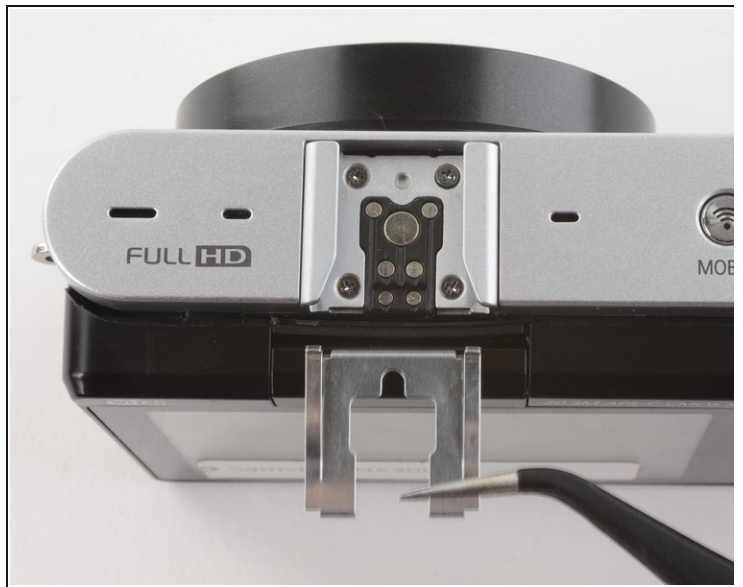
- Remove the three 4.3 mm Phillips screws from the bottom of the camera.
- Remove the 4.3 mm Phillips screw hiding inside the battery compartment.

Step 6



- Remove the 4.2 mm Phillips screw from the left handgrip.
- Remove the two 4.2 mm Phillips screws from the right handgrip.

Step 7



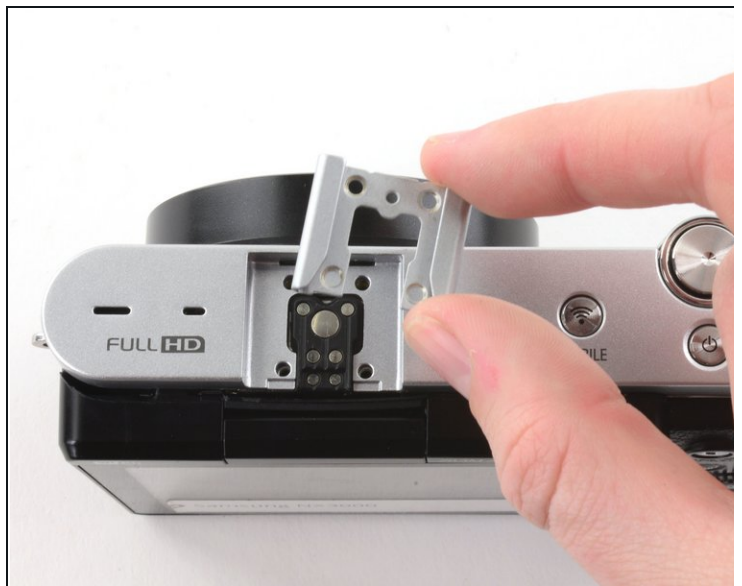
- Use tweezers to remove the metal shield from the external flash mount.

Step 8



- Remove the four 5 mm Phillips screws from the external flash mount .

Step 9



- Remove the external flash mount.

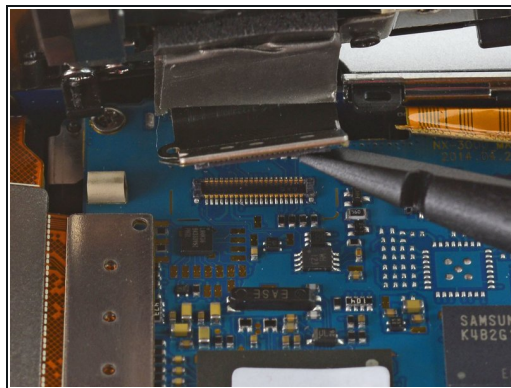
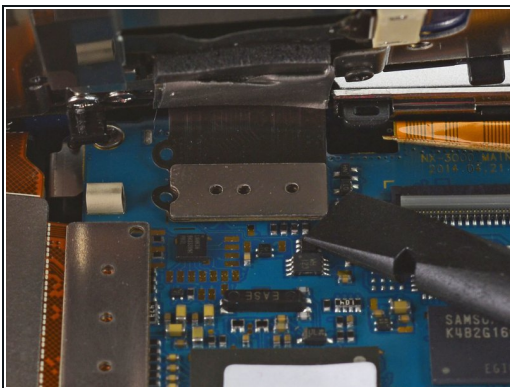
Step 10



- Slowly pull the bottom of the back case away from the camera.

⚠ Do not attempt to remove the back case as it is attached to the motherboard by a ribbon cable.

Step 11



- Use the flat end of a spudger to pry the flat topped connector straight up from the motherboard.
- Remove the back case.

To reassemble your device, follow these instructions in reverse order.