



iJDMTOY Lexus GS F-Sport LED Fog Lights Installation

This guide demonstrates how to install LED fog lights on a 2013-2015 Lexus GS F-Sport to get a more JDM look.

Written By: Eric Wu



INTRODUCTION

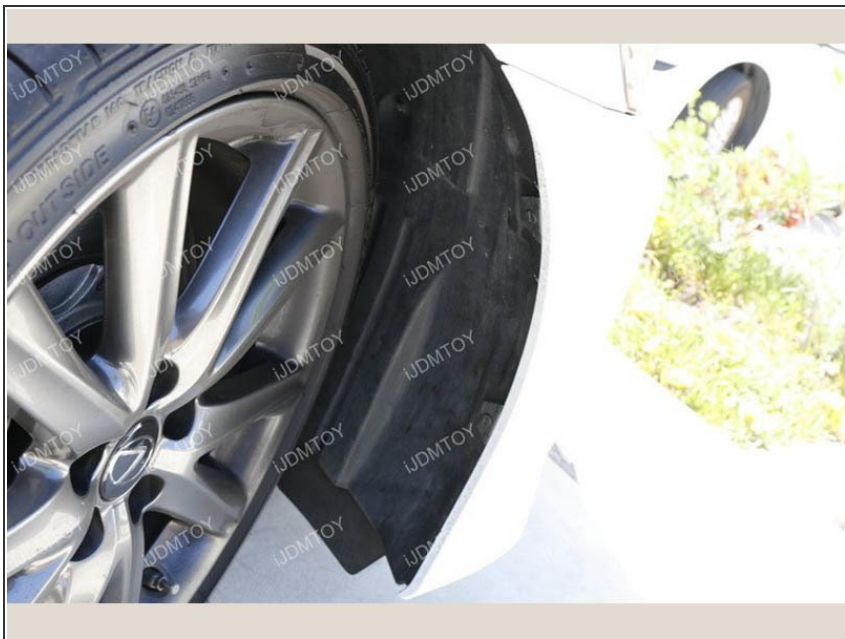
If you have a 2013-2015 Lexus GS F-Sport and you feel like it's missing a set of fog lights, then these LED fog lights will definitely spice up your car's look and make it more safe at the same time.



PARTS:

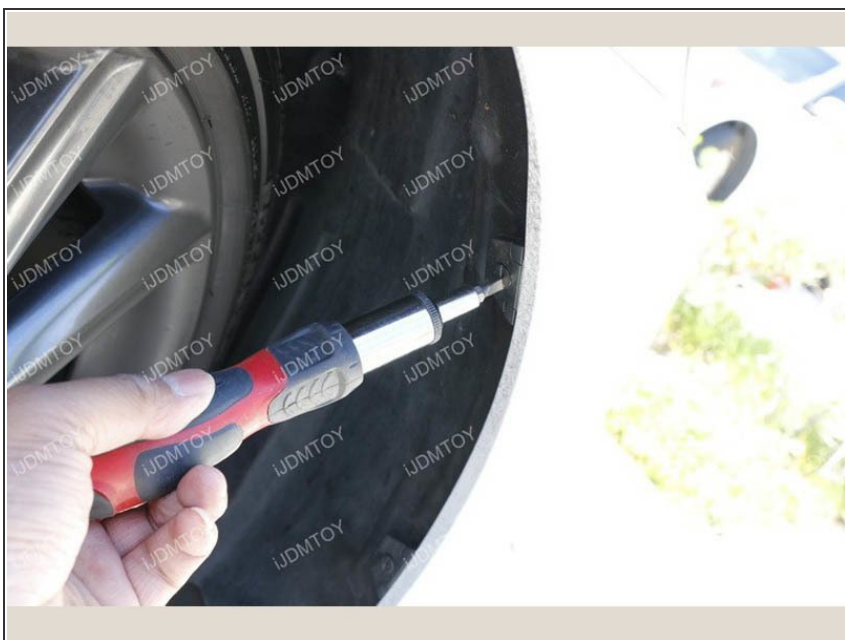
- [iJDMTOY Lexus GS F-Sport LED Fog Lights](#) (1)
-

Step 1 — Lower Bumper Fog Lamp Garnish Bezel



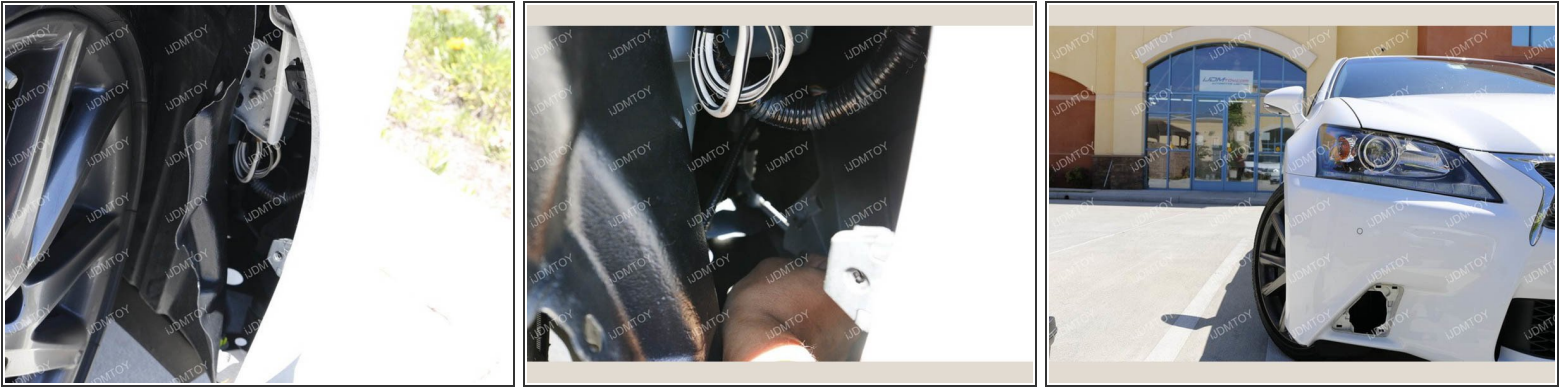
- Turn the wheel so you have enough room to open the wheel base cover and gain access to the back of the fog lamp location.

Step 2



- There are two clips that will be needed to remove. Take your screwdriver and simply twist the clip a quarter rotation to remove.

Step 3



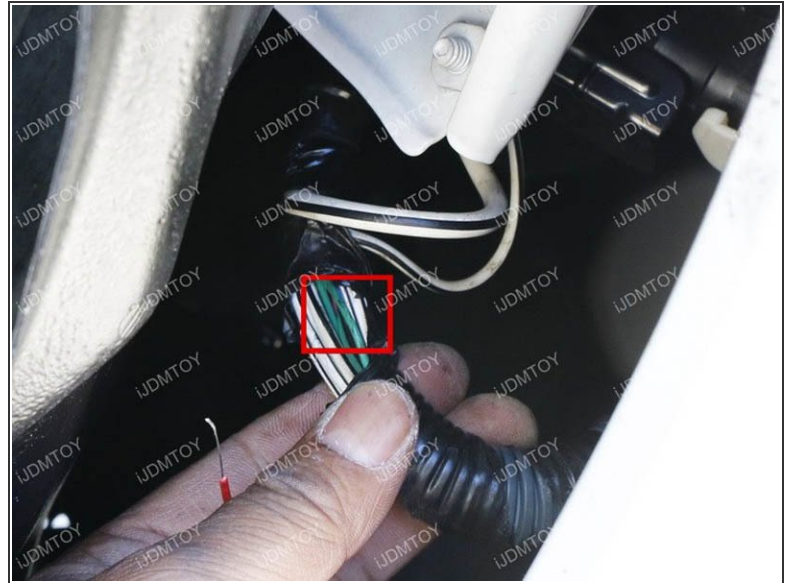
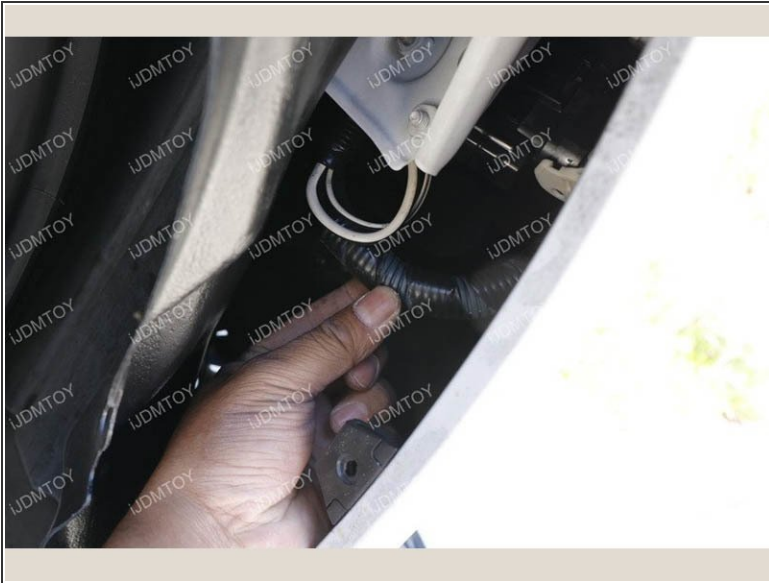
- You can now open the wheel base plastic cover. Be sure you have enough room to maneuver your hands inside the fog lamp location. Push the bezel fog lamp cover and release the tabs at the same time. You will be able to pop out the fog lamp garnish bezel.
- You can see that the Lexus GS F-Sport LED fog light and the fog lamp garnish bezel are exactly the same size with the same clips, making your new LED fog lamps a direct replacement.

Step 4



- Insert your new Lexus GS F-Sport JDM Fog Lamps in the opening, starting with the wiring portion first. Then push in the Lexus GS F Sport Fog Lights into the lower bumper location. You will clear a loud CLICK once the tabs of your LED fog lamps lock in place.

Step 5



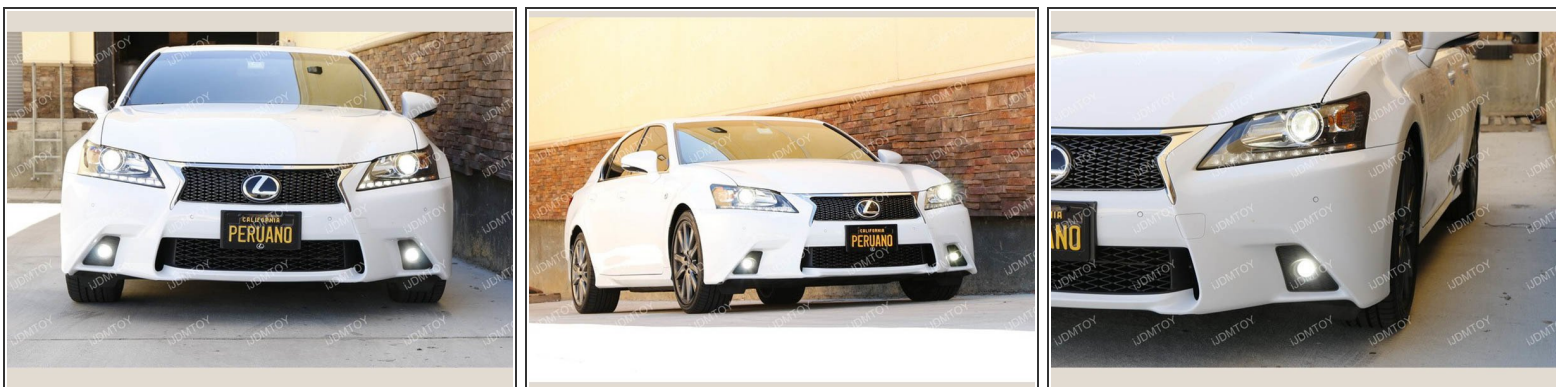
- Time for the wiring portion. When you look at the back of the fog lamp location in the wheelbase, you will see a huge wiring harness covered by a tube of electrical tape. Unwrap a small portion of the black tape to expose the wiring. You will see a group of wires. What we are looking for is the **THICK GREEN WIRE**.

Step 6



- Tap the red wire of the Lexus GS F-Sport Fog Lights to the thick green wire you just located. Wrap up the electrical tape in the wiring harness and use a zip-tie to secure. Tap the red/black wire to the ground.
- NOTE: We recommend hard wiring the connection, as opposed to using T-Taps. T-taps may have a chance of resulting in a loose connection, whereas hardwiring is more secure.

Step 7



- After the wiring is completed, make sure everything lights up. If all goes well, put all the components back in place. Enjoy your new Lexus GS F-Sport JDM Fog Lamps.

Test to make sure everything works and enjoy your new Lexus GS F-Sport LED fog lights.