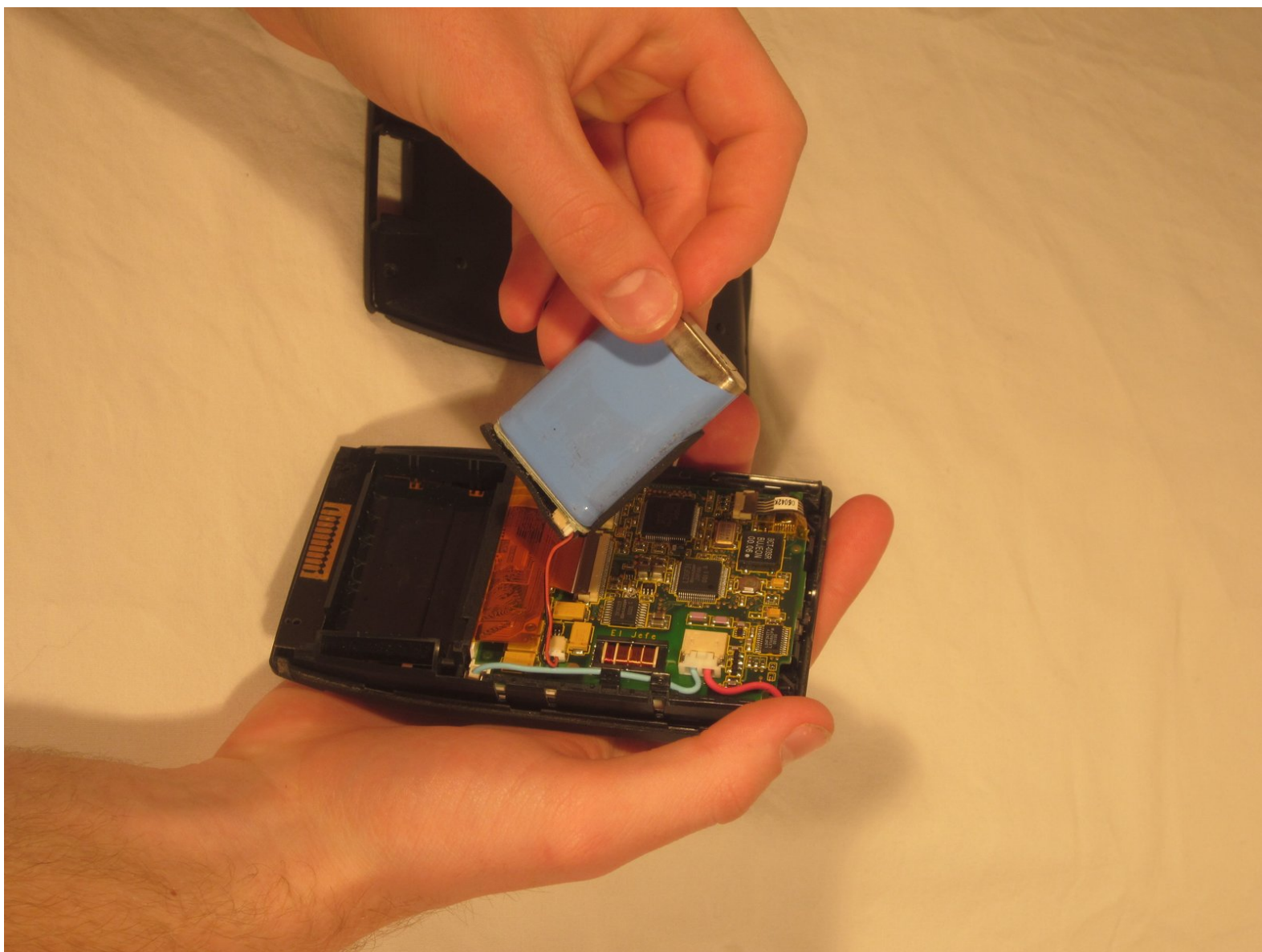




# Palm IIIc Battery Replacement

This repair guide will demonstrate how to open up the device to reach the interior battery and shows how to remove it in order to replace it with a new battery.

Written By: Paulina Trujillo



---

## INTRODUCTION

Follow this guide to remove and replace your Palm IIIc's battery.



### TOOLS:

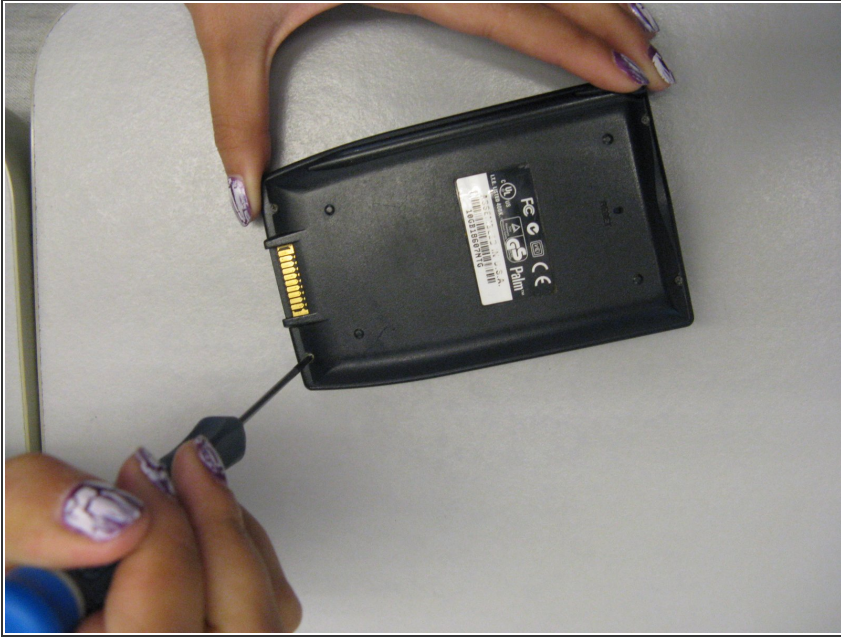
- [Phillips #00 Screwdriver](#) (1)
  - [Spudger](#) (1)
-

## Step 1 — Removing broken LCD screen



- Keep track of all pieces removed from the device.
- Gently pull off the device cover. The cover snaps on and off easily where the cover attaches to the Palm IIIc device

## Step 2



- Using a Phillips head screwdriver, take out the four screws on the back of the device. You may have to pull them out with your hands once they are unscrewed.
- ★ There will be two long screws and two short screws. The long screws come from the top of the device, and the short screws come from the bottom of the device.

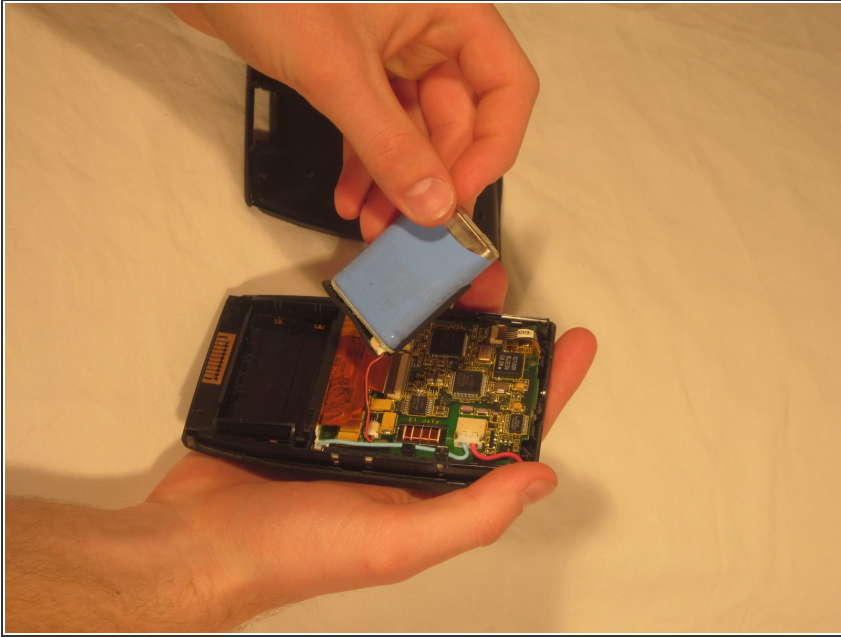
## Step 3 — Remove the Front Cover



- Lay Palm Ilc face-up and remove the front cover.
- ⓘ Do this firmly but not with too much force so as to not break or disturb anything you're not supposed to.

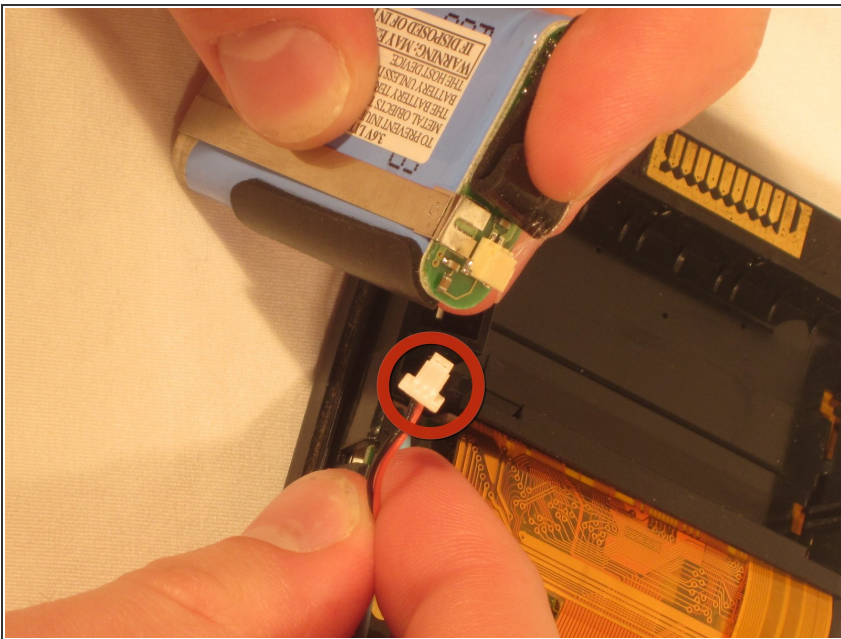


## Step 4 — Battery



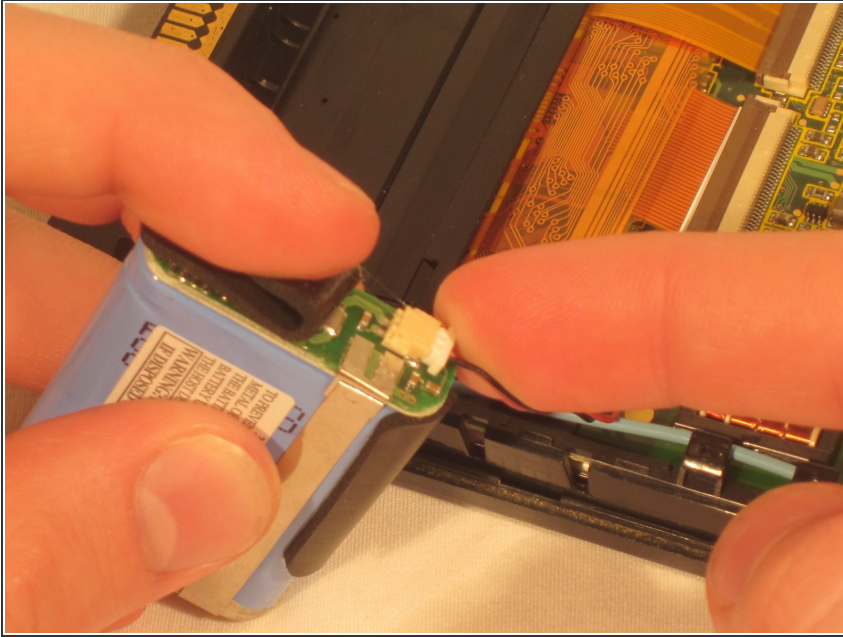
- Carefully pop out the battery, without disturbing the surroundings.
- Prying tool will facilitate this step.

## Step 5



- Detach the wire connecting the battery to the motherboard.

## Step 6



- Attach the new battery by connecting it to the motherboard via the red wire.

To reassemble your device, follow these instructions in reverse order.