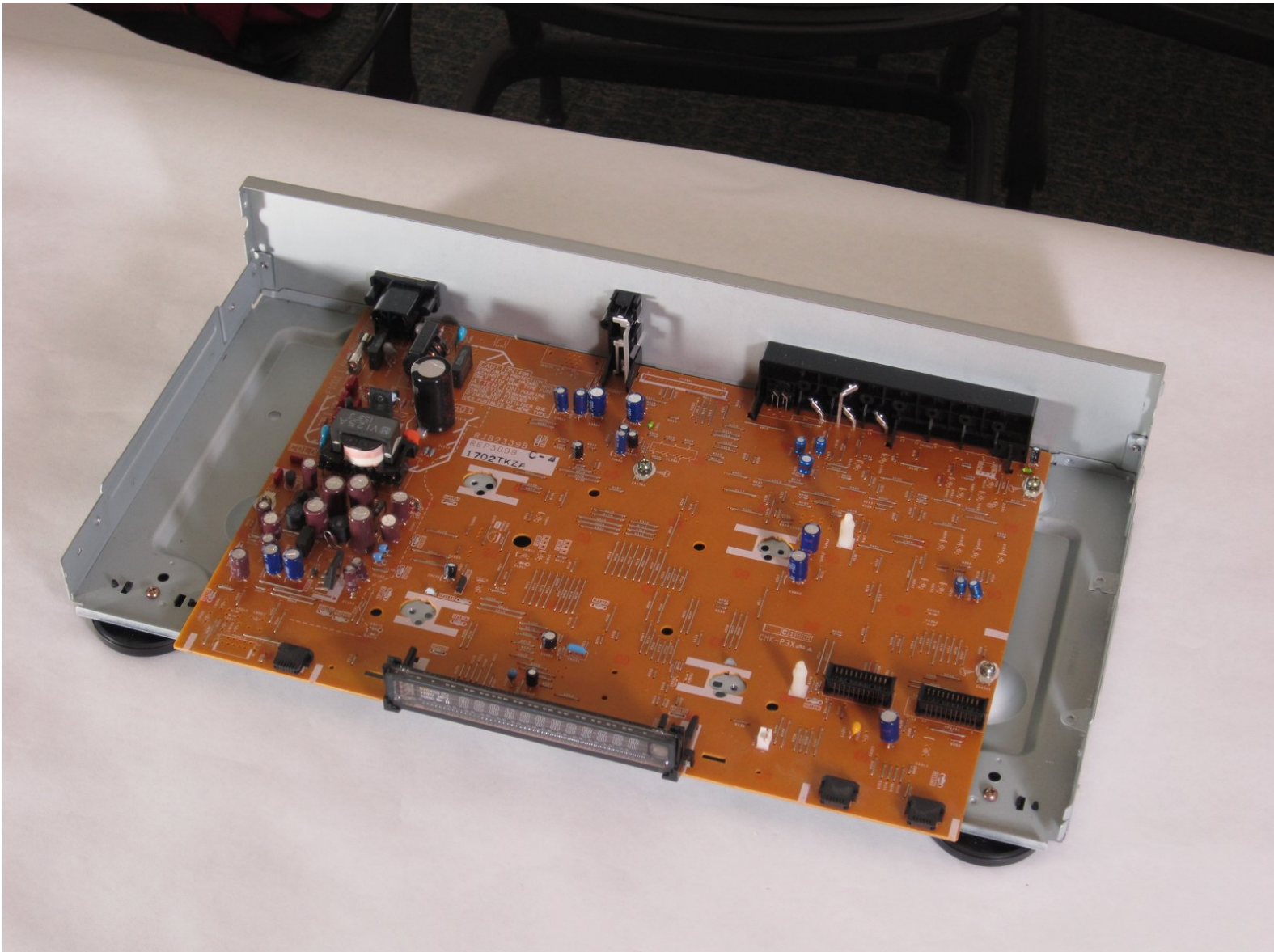




# Panasonic Power Supply Board Power Board Replacement

Taking the power board out of the chassis

Written By: Kevin



---

## INTRODUCTION

Taking the power board out of the chassis



### TOOLS:

- [Phillips #2 Screwdriver](#) (1)
-

## Step 1 — Disk Tray Cover



- Eject the disk tray from the DVD player before removing power supply.

## Step 2



- Evenly lift upward on the disk tray front cover (not slanted, as pictured). This will allow for easier disassembly of the player.

### Step 3 — Outer Case



- Remove the three screws running along the back edge of case cover.
- Remove the two screws from each side of the case cover.

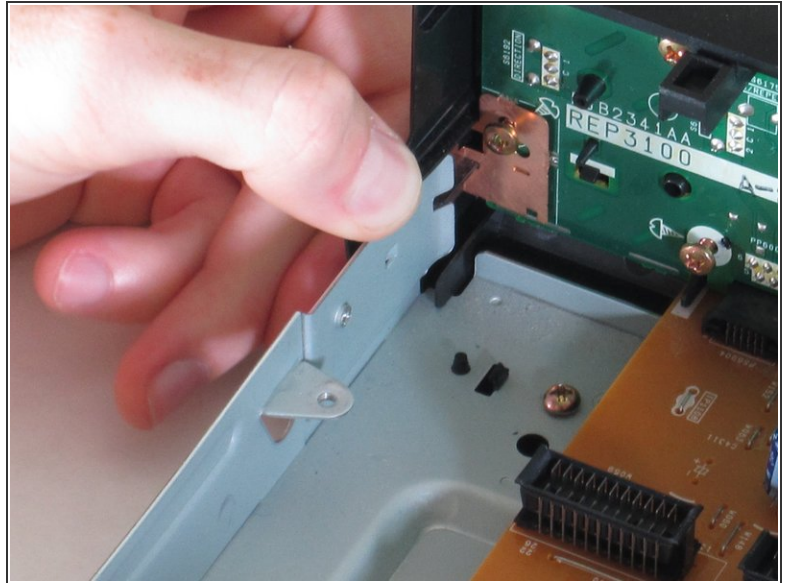
### Step 4



- Grab edges of the cover with your hands. Pull outward slightly, then straight up.

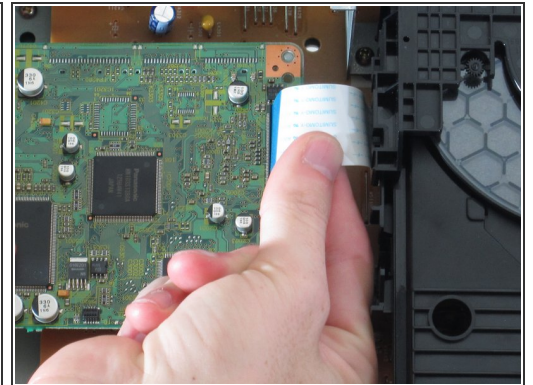
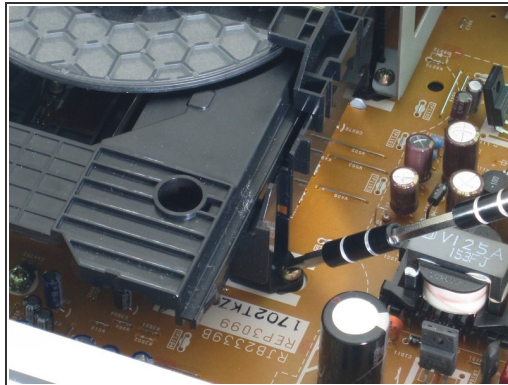
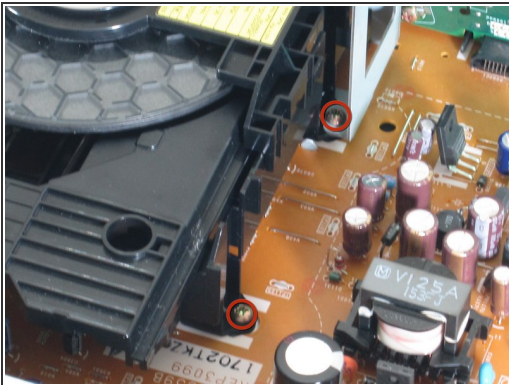


## Step 5 — Front Panel



- Lift up the five tabs securing the front panel to the chassis. There are three on the bottom, and two on the inside edges of the panel. Panel should then lift off the player.

## Step 6 — Disk Drive



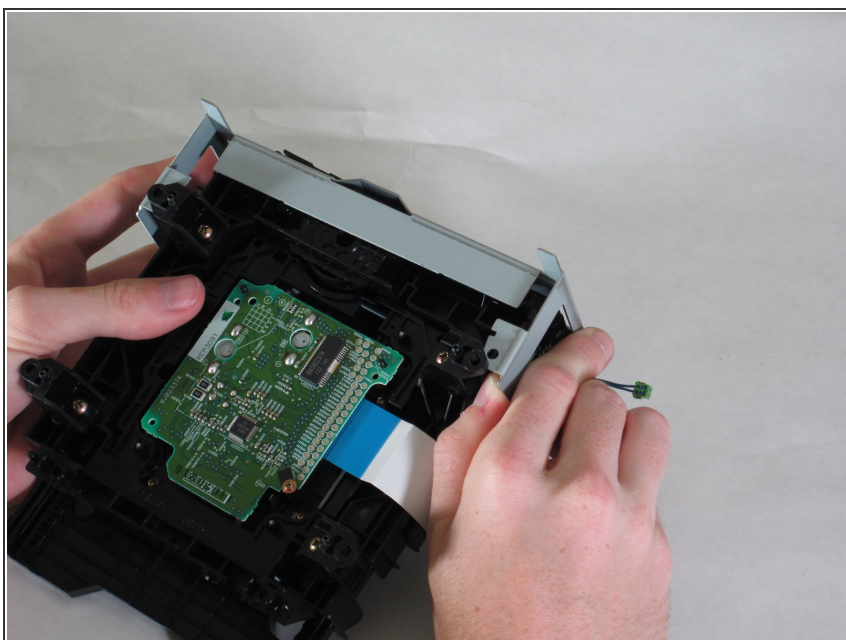
- Locate the four screws securing the disk drive assembly. There are two on each side.
- Use a narrow screwdriver to remove all four screws.
- Remove the blue ribbon wire from its connector. When doing this, be cautious to not damage the connector.

## Step 7



- Lift assembly by the front to pull metal bracket from the power board.
- Pull up back end and lift drive out.

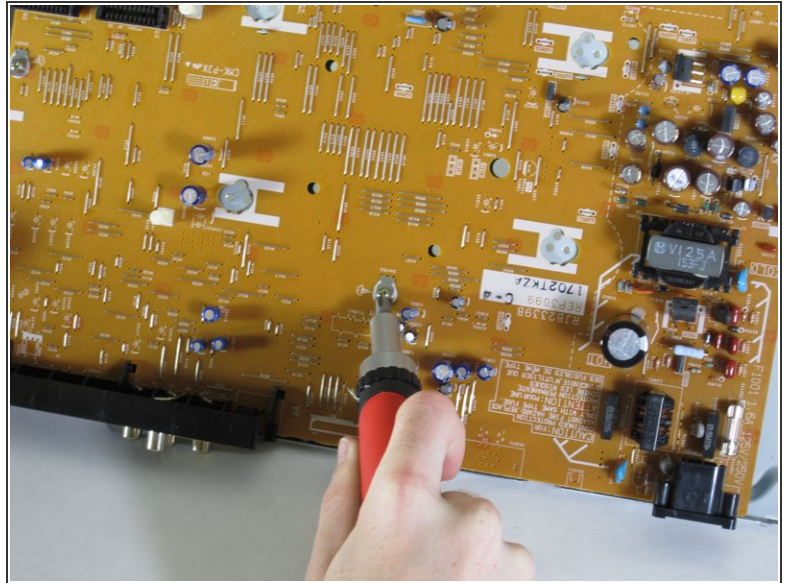
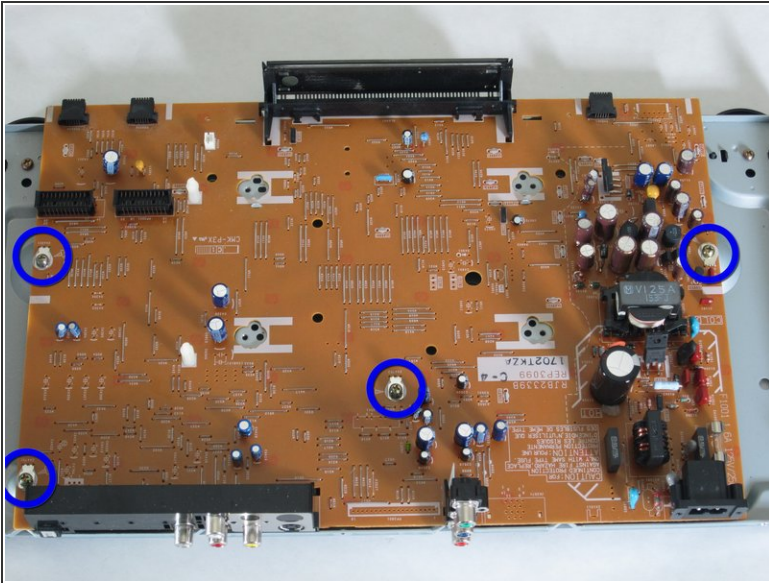
## Step 8



- With the drive assembly separate from the player, hold as shown and pull the bracket edges away from the disk drive.
- Lift bracket off and reserve for re-assembly.



## Step 9 — Power Board



- Remove 4 screws from the power board as shown.
- Lift the power board straight up and out of the chassis.

To reassemble your device, follow these instructions in reverse order.