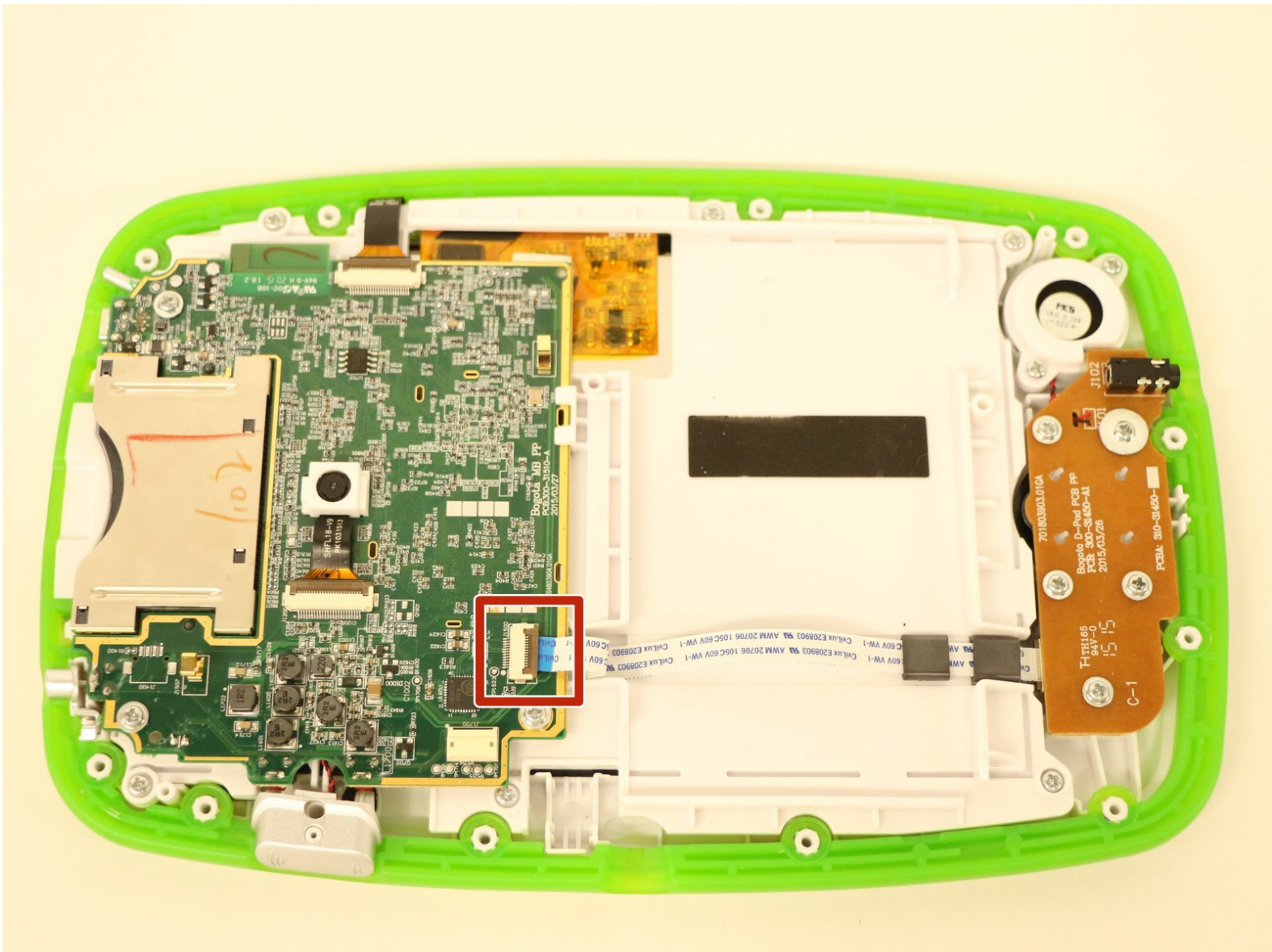




# LeapFrog LeapPad Platinum Motherboard Replacement

In this guide, you will learn how to remove and replace the LeapPad Platinum's motherboard.

Written By: Kaitlyn Kinerk



## INTRODUCTION

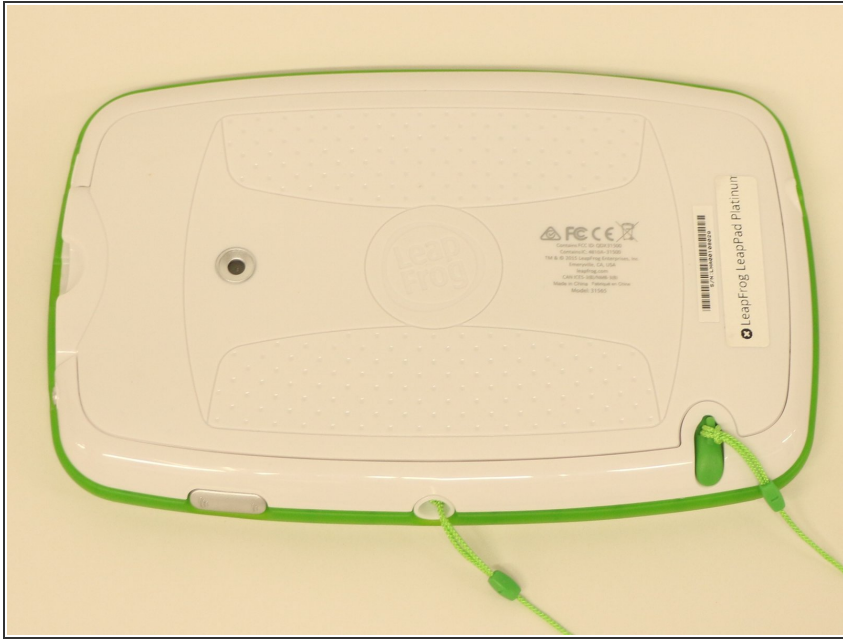
If you suspect an issue with your LeapPad Platinum's motherboard, you can follow this guide to replace it. Be sure to turn off your device prior to opening it up and removing parts!



### TOOLS:

- [Phillips #1 Screwdriver](#) (1)
  - [iFixit Opening Tools](#) (1)
-

## Step 1 — Battery



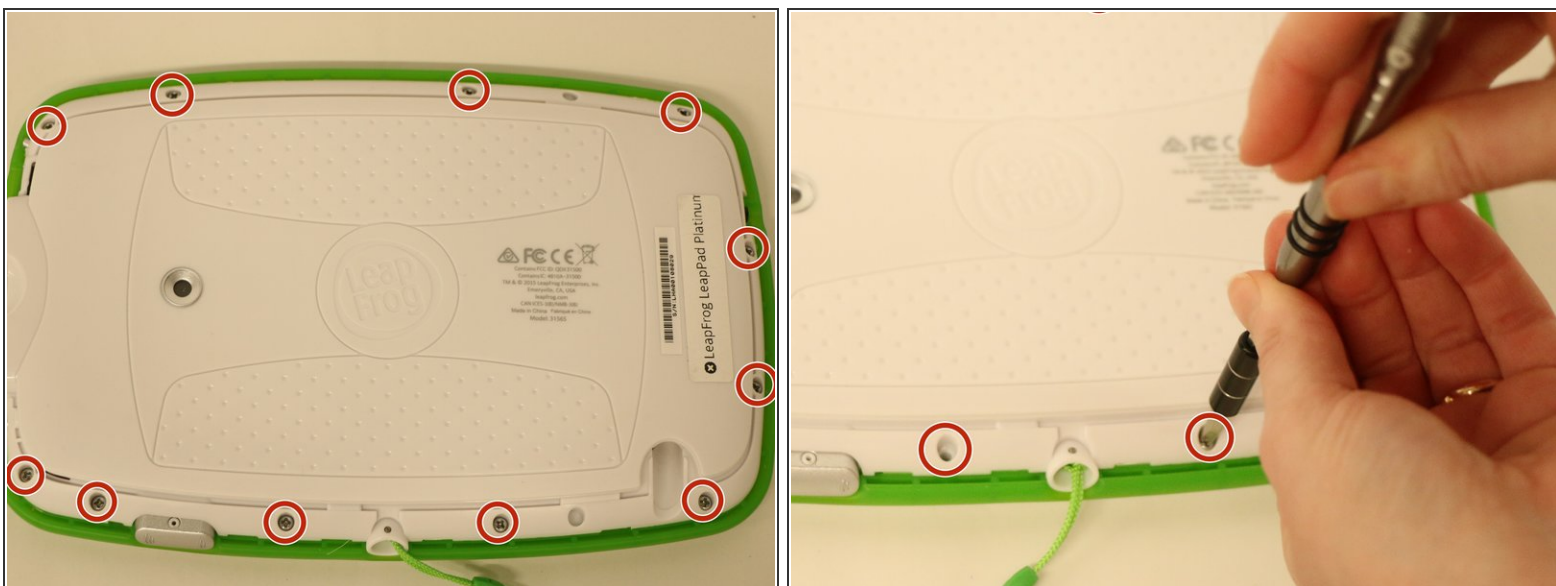
- Place your tablet on a flat surface with the screen facing down.

## Step 2



- Using a plastic opening tool, pry off the plastic border by inserting it in the space between the green bumper and the white plastic on the edge of the tablet.
- ⓘ The border snaps into place, so don't be too worried if you hear a cracking noise while prying it off.

### Step 3



- Remove the 11 Phillips screws (8.0 mm) located around the edge of the back cover with a Phillips screwdriver.

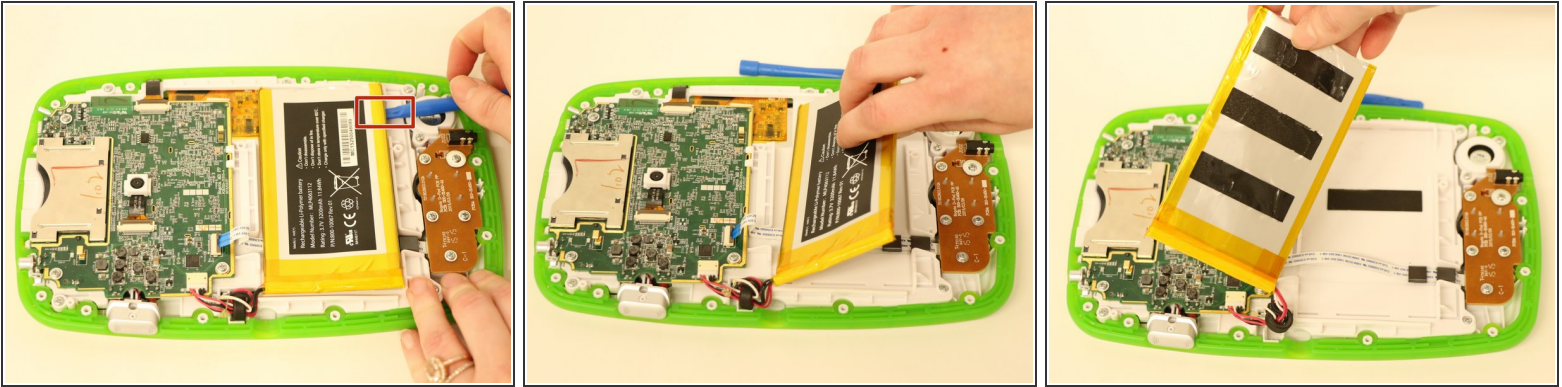
### Step 4



- Pull the back cover off of your device.

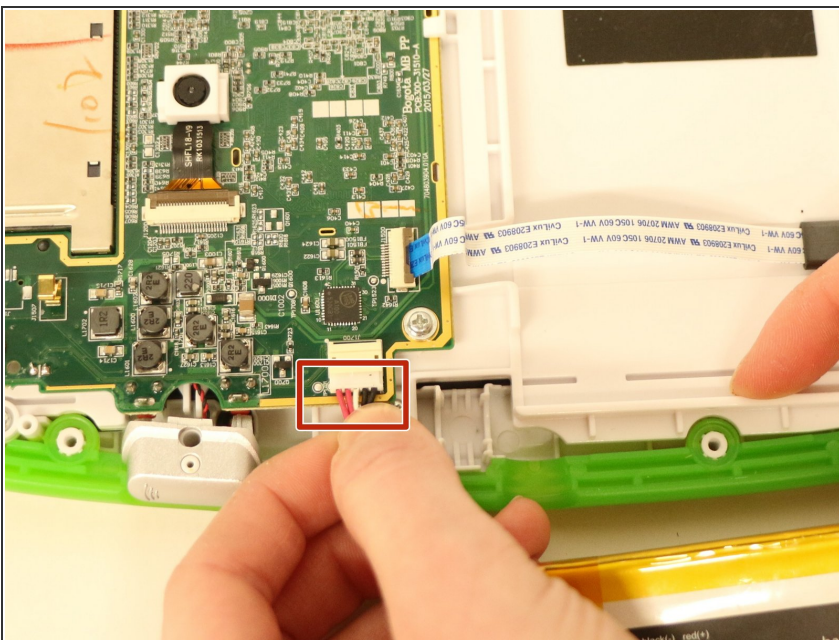


## Step 5



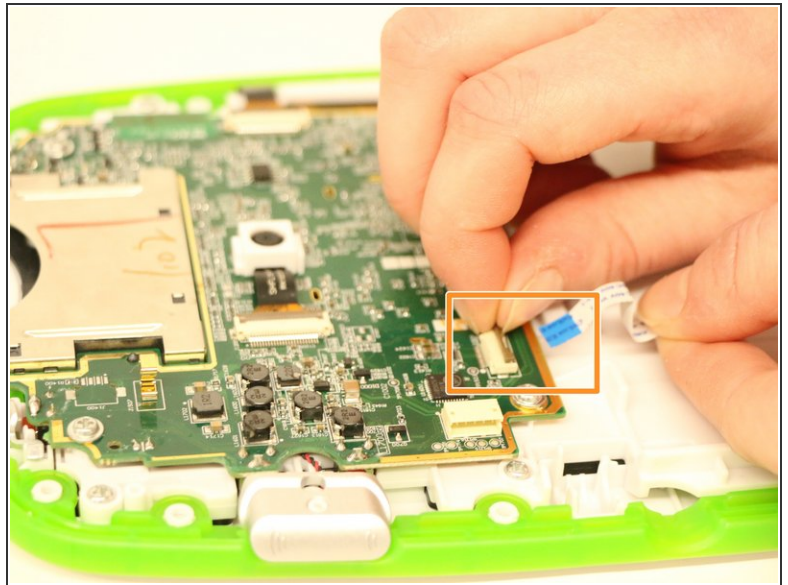
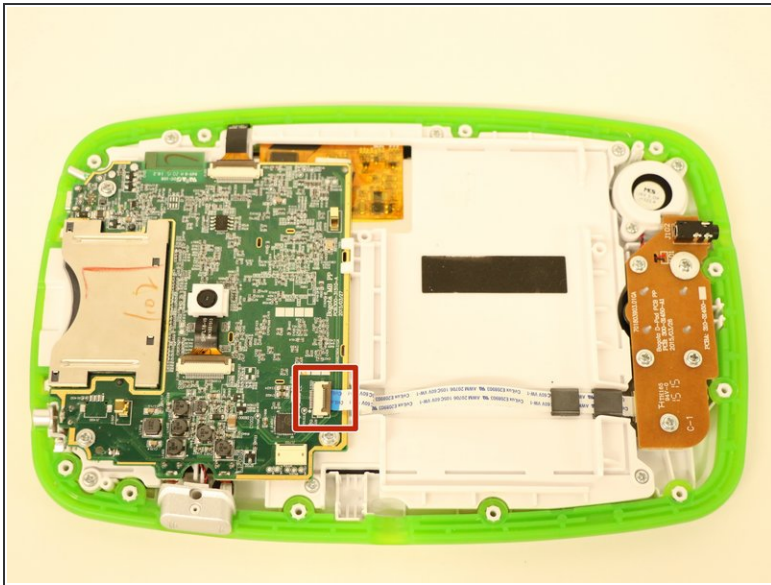
- Wedge a plastic opening tool underneath the battery and lift the battery up.
- ⓘ The battery is held in place by an adhesive strip, so it can be difficult to pry off.

## Step 6



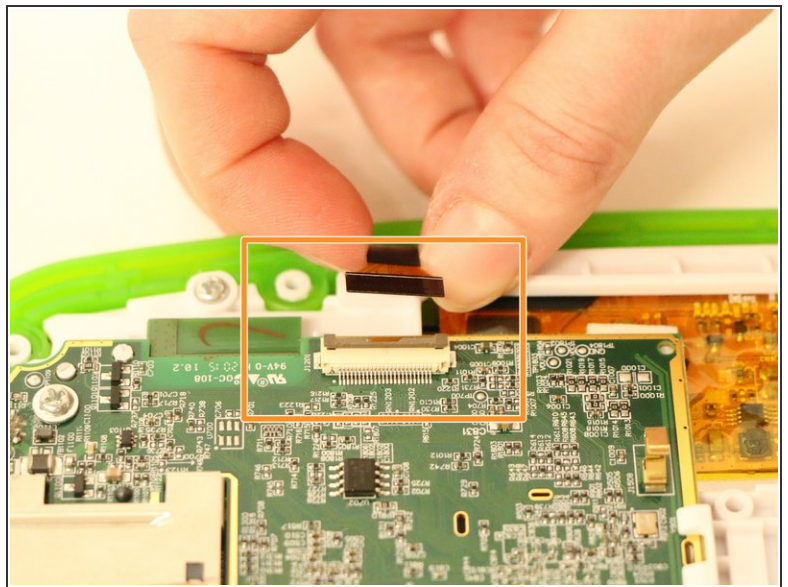
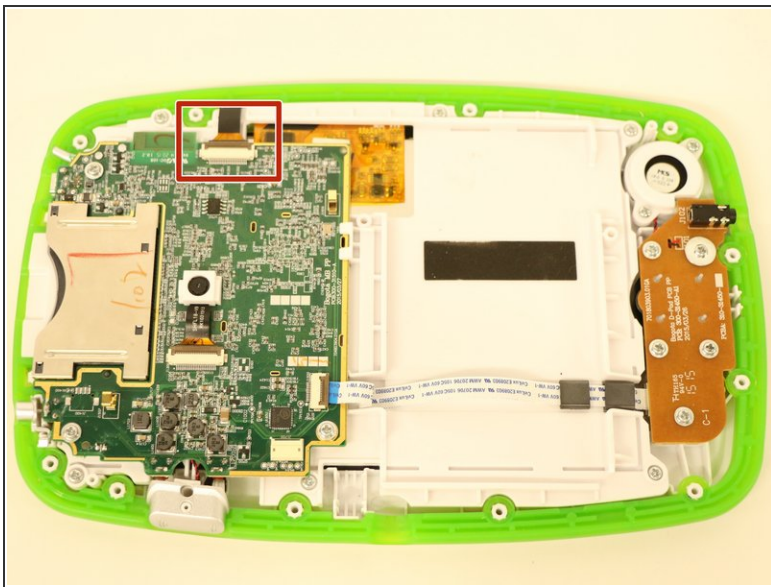
- The battery has red, black, and white wires that are all connected to the motherboard through a plastic clip. Unplug this plastic clip to fully remove the battery from your device.

## Step 7 — Motherboard



- Locate the white ribbon cable connected to the motherboard.
- Disconnect the cable by flipping up the metal tab on the connector and sliding the cable out.

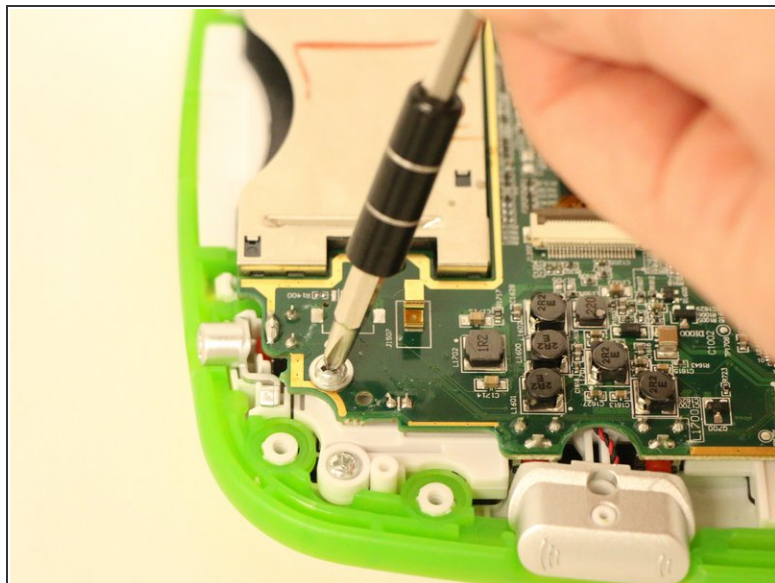
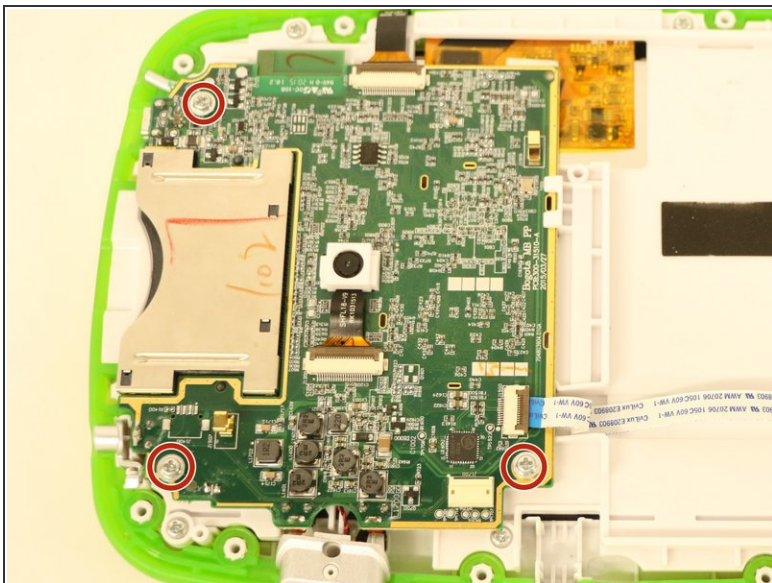
## Step 8



- Locate the black ribbon cable which is connected to the motherboard.
- Disconnect the cable by flipping up the metal tab on the connector and sliding the cable out.

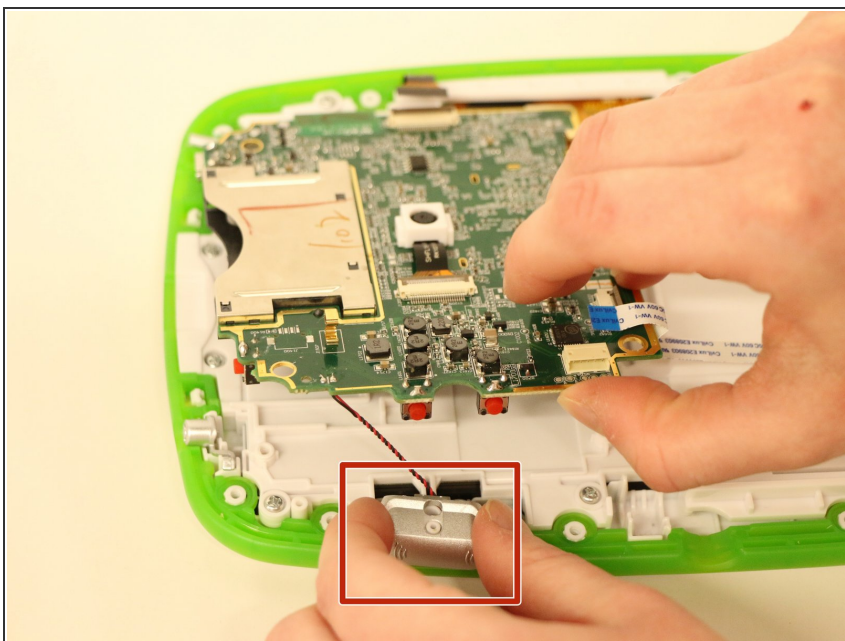


## Step 9



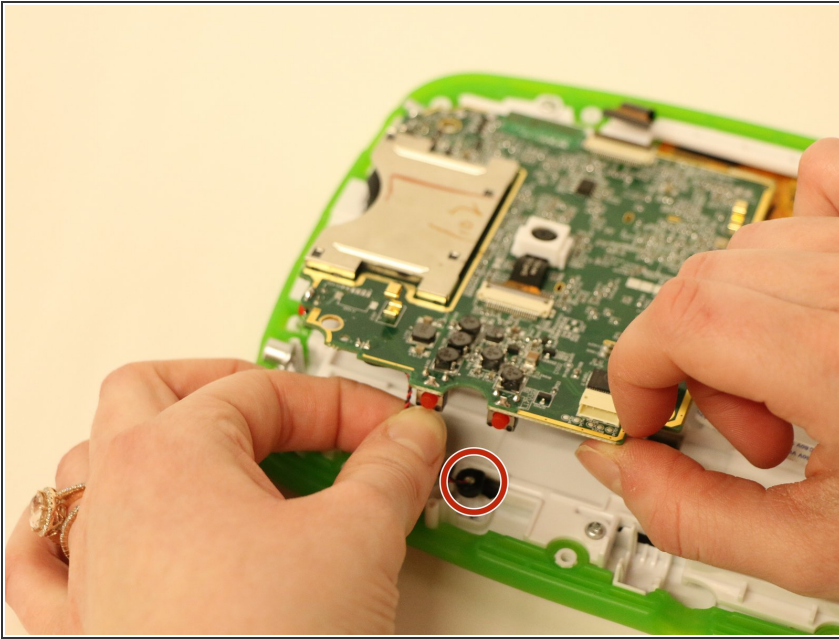
- Remove the three 4.0 mm Phillips screws located in the corners of the motherboard.

## Step 10



- Lift up the front edge of the motherboard.
- Lift the volume-control button out of the device and set it aside.

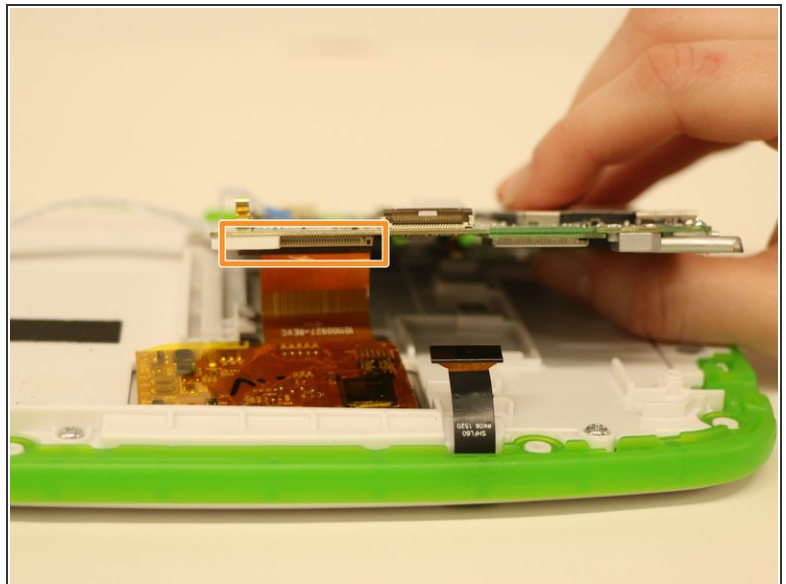
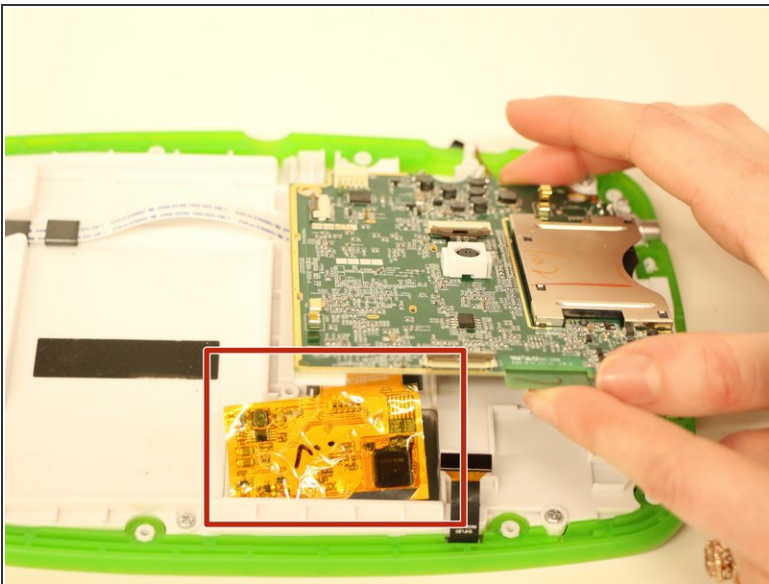
## Step 11



- Gently tug upwards on the red and black twisted wires located near the button you just removed to release the black rubber base they are connected to from the device.

ⓘ This does not take much force, so it is likely that this piece will pop out of place when initially lifting the motherboard.

## Step 12



- Rotate your device 180 degrees so the the motherboard is on your right-hand side and gently lift the front edge of the motherboard to reveal an orange sheet of plastic.
- Disconnect the orange sheet from the motherboard by lifting the metal tab on the connector (as you did for the cables in steps 1 and 2), and lift the motherboard completely out of the device.



To reassemble your device, follow these instructions in reverse order.