



Black and Decker BDEDMT Power Cord Replacement

Before diving into the replacement of your...

Written By: cayla dahl



INTRODUCTION

Before diving into the replacement of your drill power cord, it will be helpful to know that this is a fairly easy replacement with few steps and few tools. Remember to disconnect the power cord from a wall outlet before disconnecting any wires.

TOOLS:

Tweezers (1)

Mako Driver Kit - 64 Precision Bits (1)

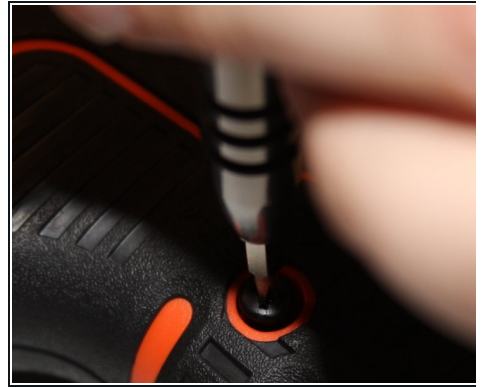
Step 1 — Detach Matrix Attachment



 Remember to disconnect the device from all external power sources.

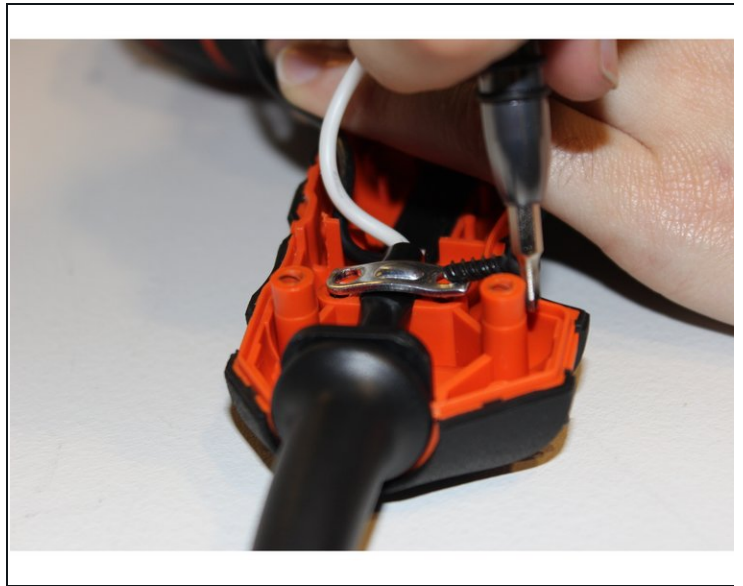
- To detach the matrix attachment piece, press down on the attachment release button located at the top of the device.
- Leaving your finger pressed down on the button, simply pull on the attachment to release it.

Step 2 — Remove Mounting Hardware



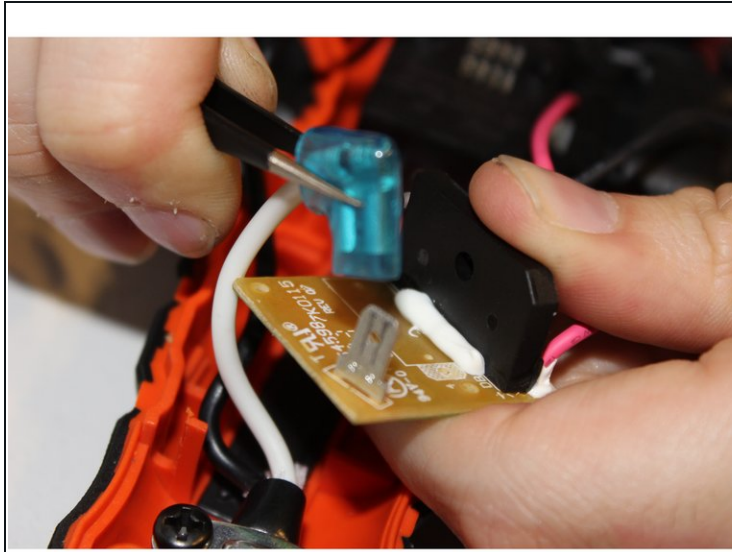
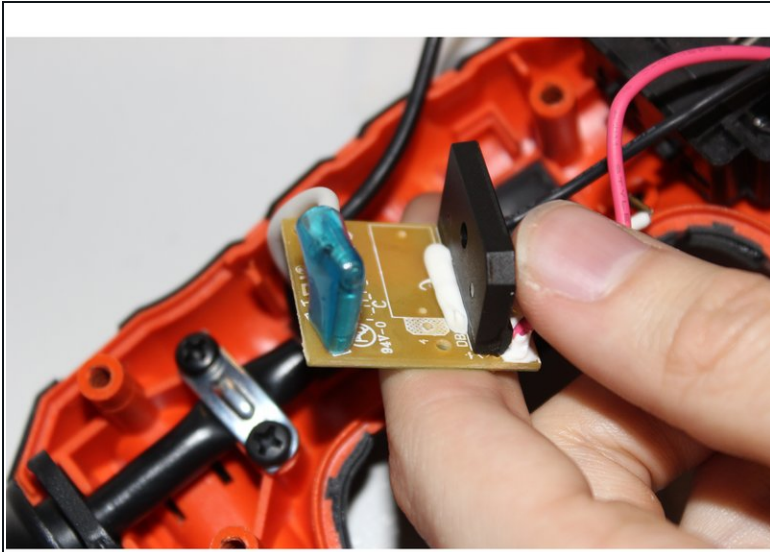
- Using a JIS 1 screwdriver, unscrew seven 19mm outer screws located on the armature.
- Using the same screwdriver, unscrew the 12mm outer screw located on the armature.

Step 3 — Mounting Bracket



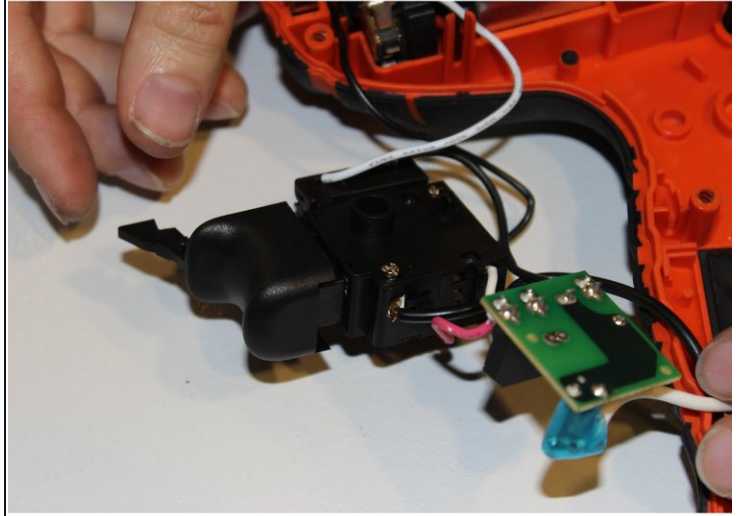
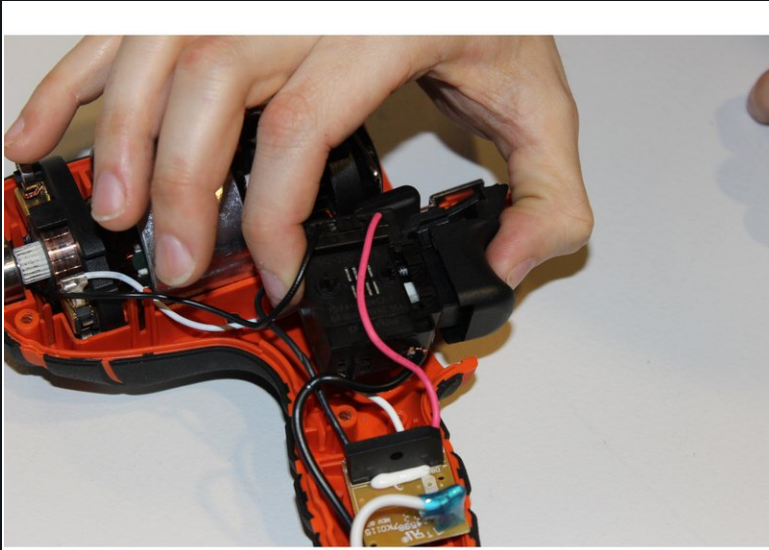
- Using the T-handle screwdriver with the JIS 1 bit, unscrew the two lower black 12mm screws.

Step 4



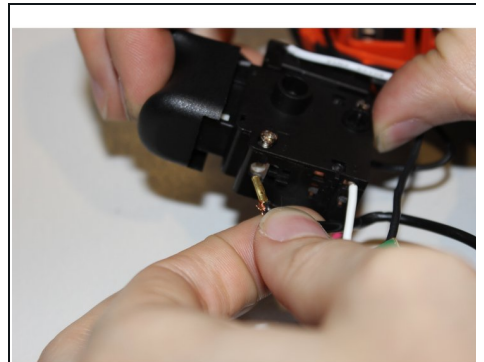
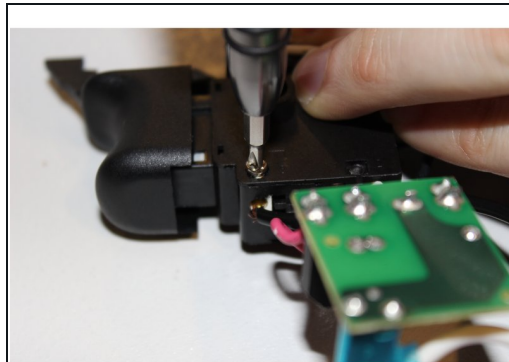
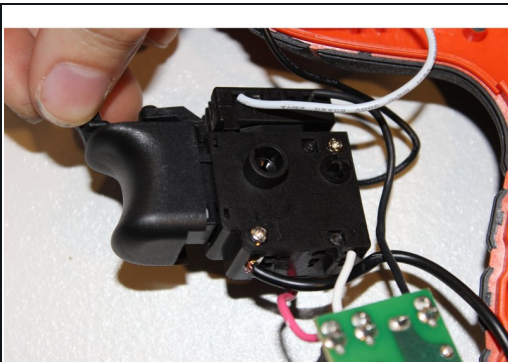
- There will be a white cord that runs from the power cord base to the circuit board located slightly above.
- Use the tweezers to detach the entire white cord and blue connection piece as a whole from the circuit board.

Step 5 — Trigger Assembly



- Physically pull up on the trigger device and remove it from the armature.
- Flip trigger device over onto its back.

Step 6 — Wire Removal



- There is a screw labeled 3 located on the bottom left of the back of the trigger device.
- Use a JIS 0 screwdriver to remove screw.
- Gently tug on the black wire to pull the wire out of the device.
- ① Now the power cord will be completely removed from the device.

To reassemble your device, follow these instructions in reverse order.