



Disassembling Samsung NX3000

This guide gives you a look at the major...

Written By: Kelsea Weber



INTRODUCTION

This guide gives you a look at the major components of the Samsung NX3000 and provides complete disassembly instructions.

We highly suggest you use a [magnetic project mat](#) or an organization tray. This camera has **many** different types of screws and keeping them organized is key to proper reassembly.

TOOLS:

[Phillips #00 Screwdriver](#) (1)

[Spudger](#) (1)


[Tweezers](#) (1)

[Magnetic Project Mat](#) (1)

Step 1 — Battery



- Turn the camera upside down. Only remove the lens if you have to in order to access the battery compartment, as dust particles could easily enter the main body and fall onto the delicate sensor.
- Slide the button to the left to open the battery compartment.
- Push the blue button up to release the battery.

 The battery is not shown in these photos.

Step 2 — Disassembling Samsung NX3000



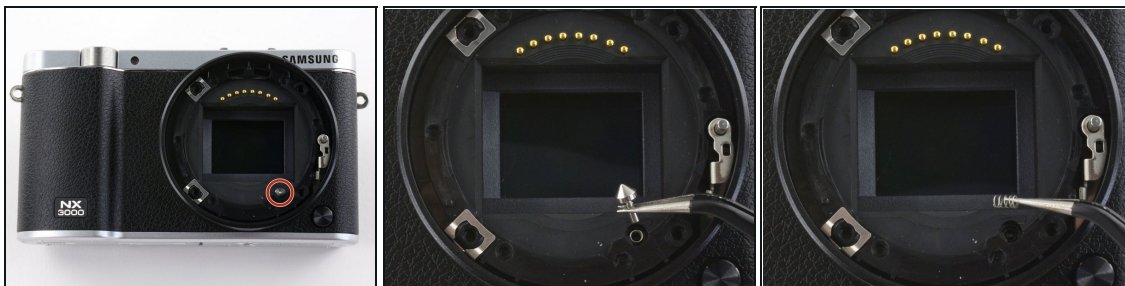
- Remove the four 7.3 mm Phillips screws from the front of the lens assembly.
- Remove the silver ring with tweezers.

Step 3



- Use tweezers to remove the black plastic ring and small metal ring inside the lens assembly.

Step 4



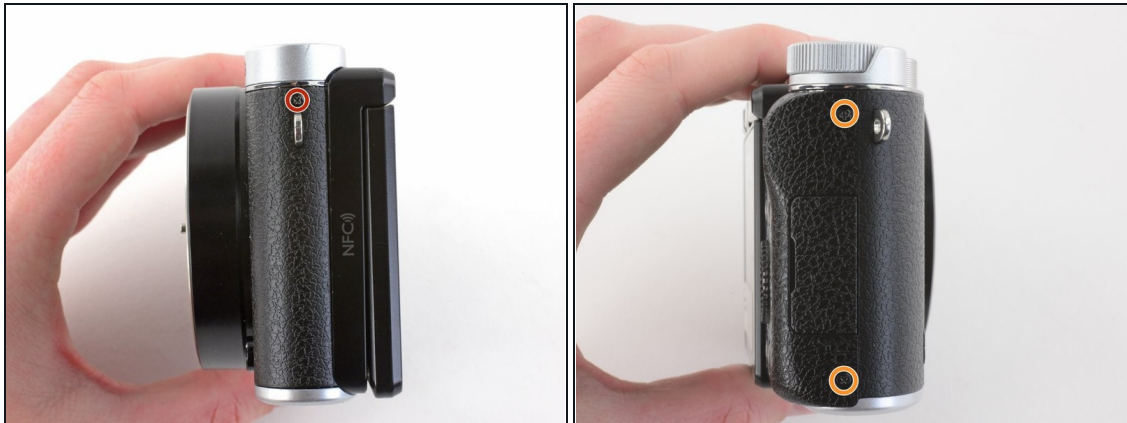
- Use tweezers to remove the pin and small spring from the lens assembly.

Step 5



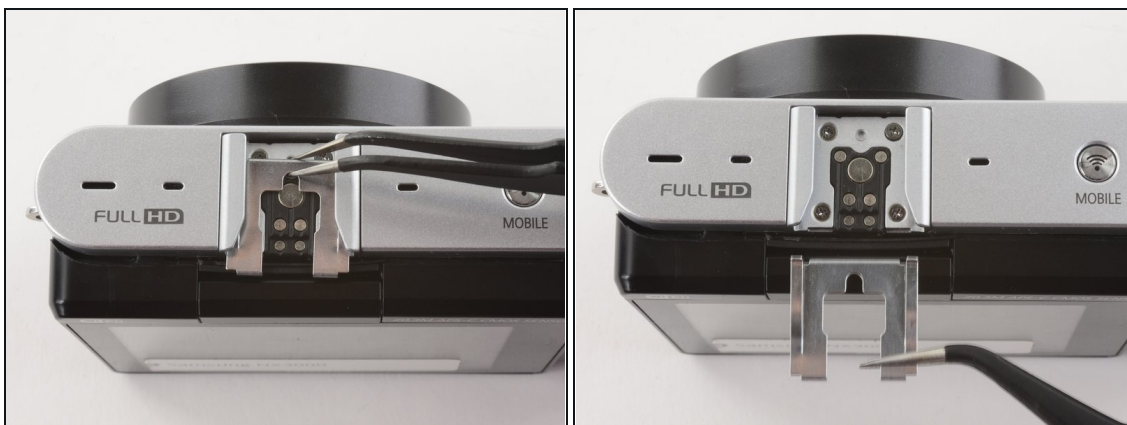
- Remove the three 4.3 mm Phillips screws from the bottom of the camera.
- Remove the 4.3 mm Phillips screw hiding inside the battery compartment.

Step 6



- Remove the 4.2 mm Phillips screw from the left handgrip.
- Remove the two 4.2 mm Phillips screws from the right handgrip.

Step 7



- Use tweezers to pull the metal shield straight out of the external flash mount.

Step 8



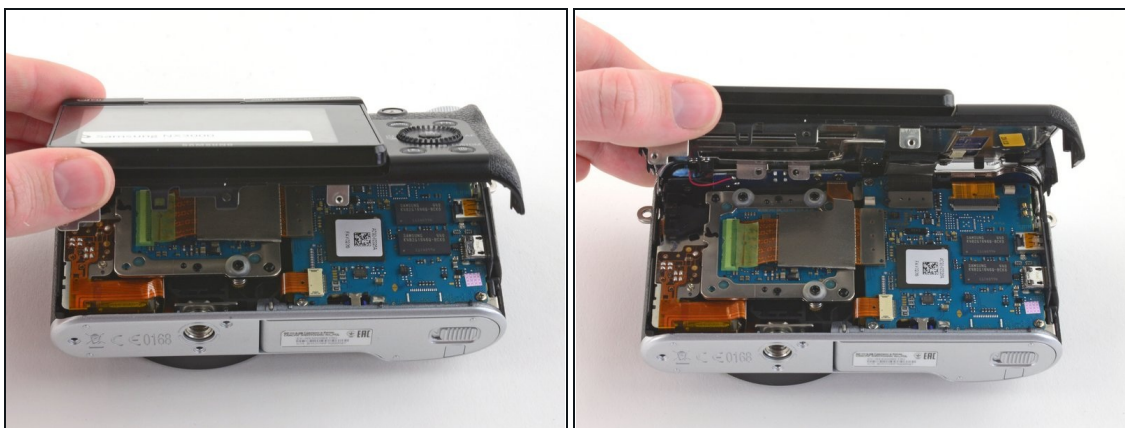
- Remove the four 5 mm Phillips screws from the external flash mount .

Step 9



- Remove the external flash mount.

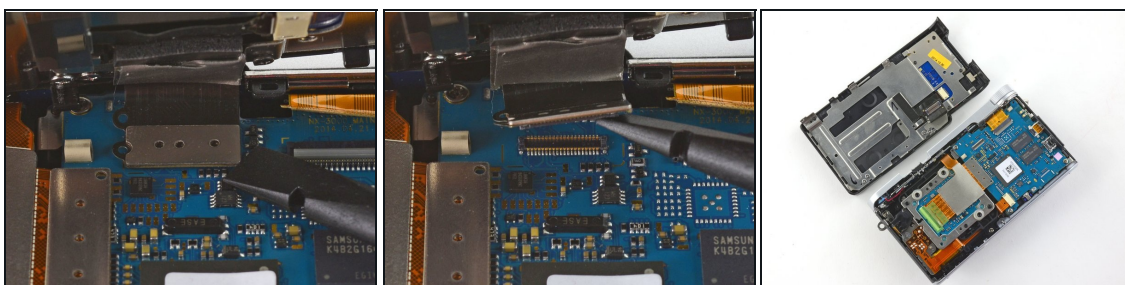
Step 10



- Slowly pull the bottom of the back case away from the camera.

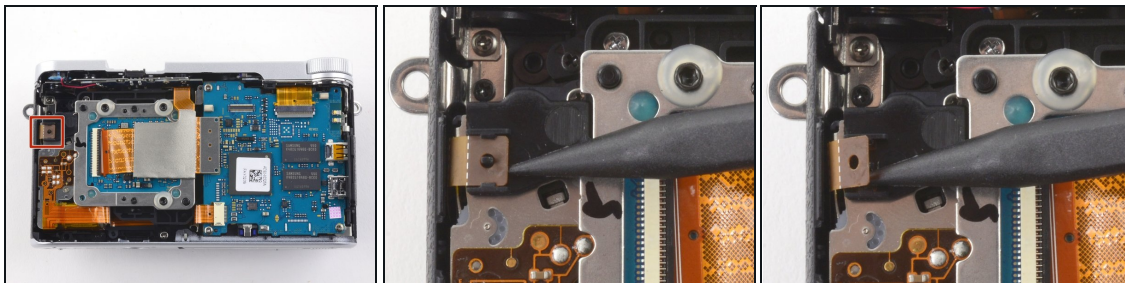
⚠ Do not attempt to remove the back case as it is attached to the motherboard by a ribbon cable.

Step 11



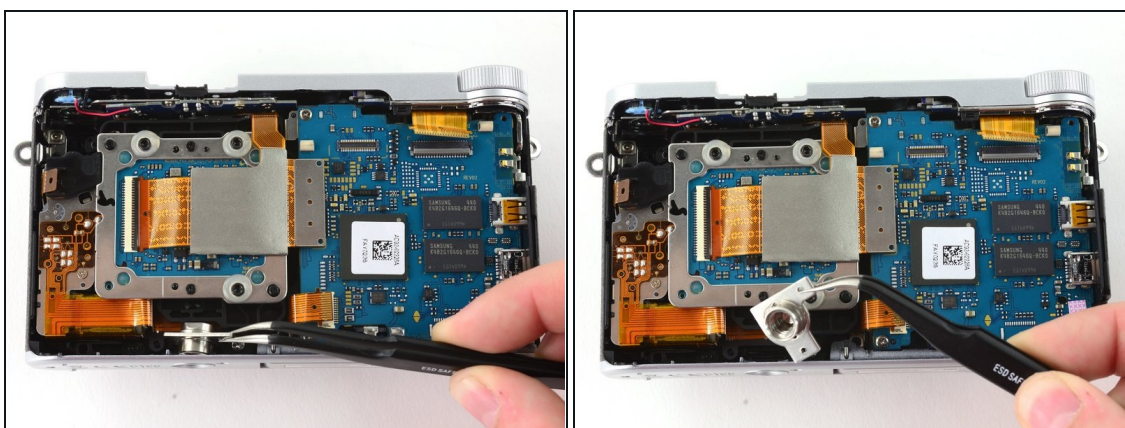
- Use the flat end of a spudger to pry the flat topped connector straight up from the motherboard.
- Remove the back case.

Step 12



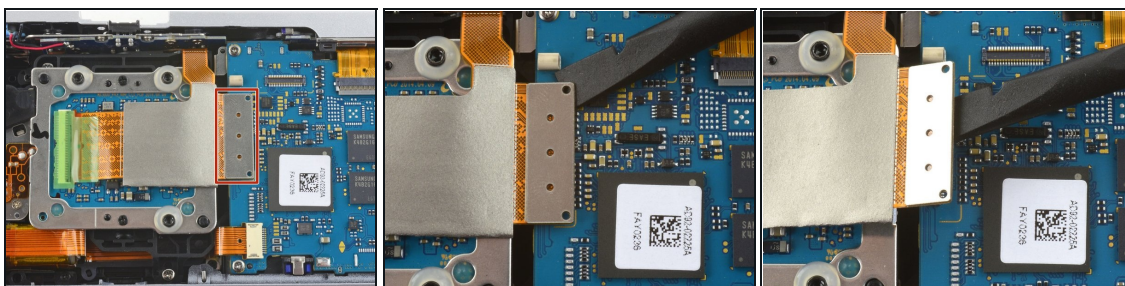
- Use the pointed end of a spudger to lift the ribbon cable straight out of the black clip located near the left handgrip.

Step 13



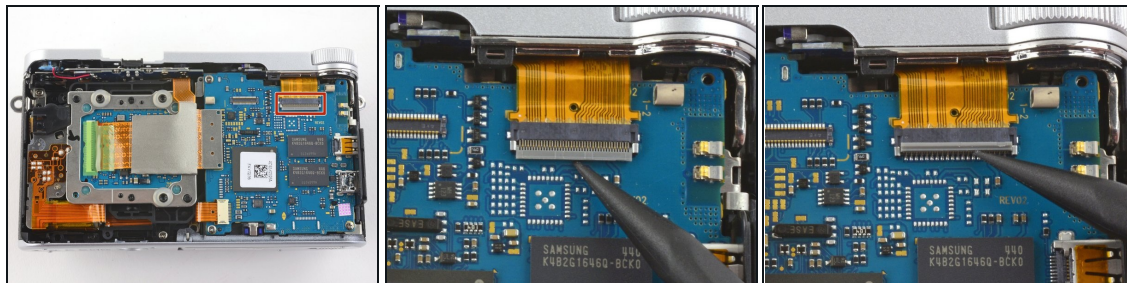
- Use tweezers to pull the tripod mount out of the front case.

Step 14



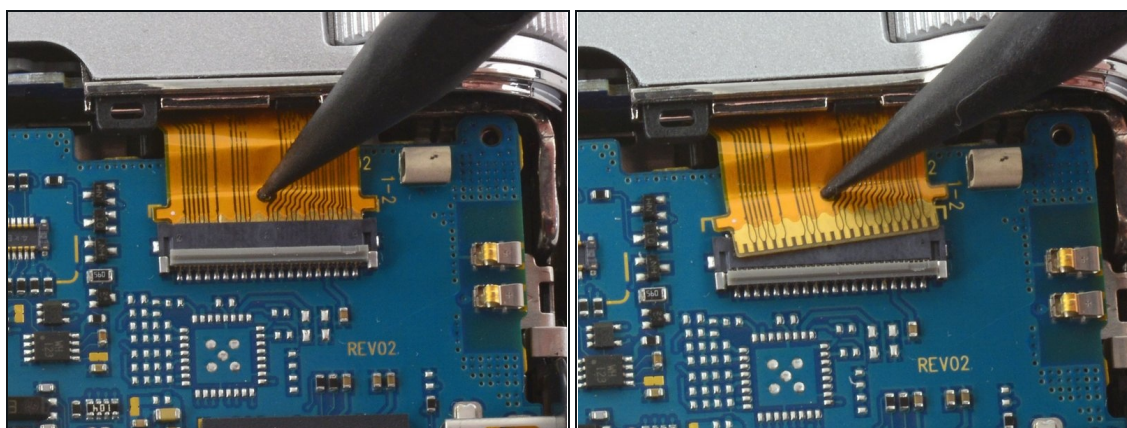
- Use the flat end of a spudger to disconnect the large ribbon cable by prying its metal connector straight up from the motherboard.

Step 15



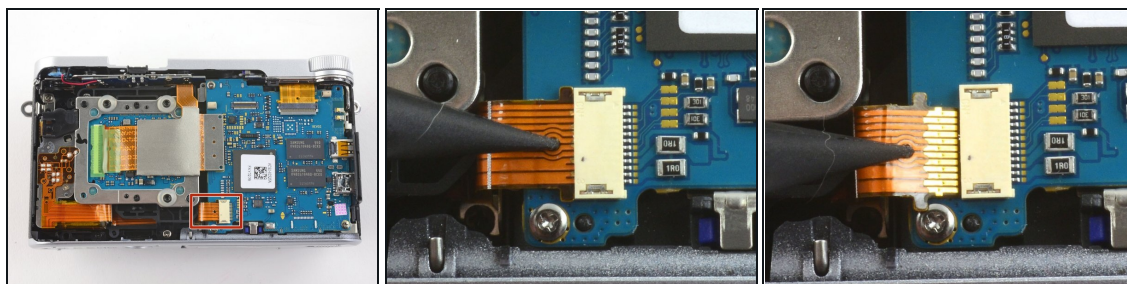
- Use the pointed tip of a spudger to unlock the ZIF connector by flipping the black bar straight up from the motherboard.

Step 16



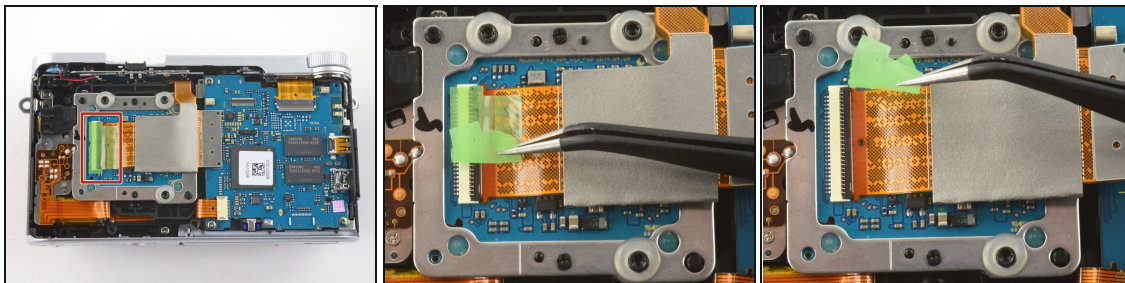
- Insert the pointed end of a spudger into the hole on the ribbon cable.
- Pull the ribbon cable straight out of the ZIF connector.

Step 17



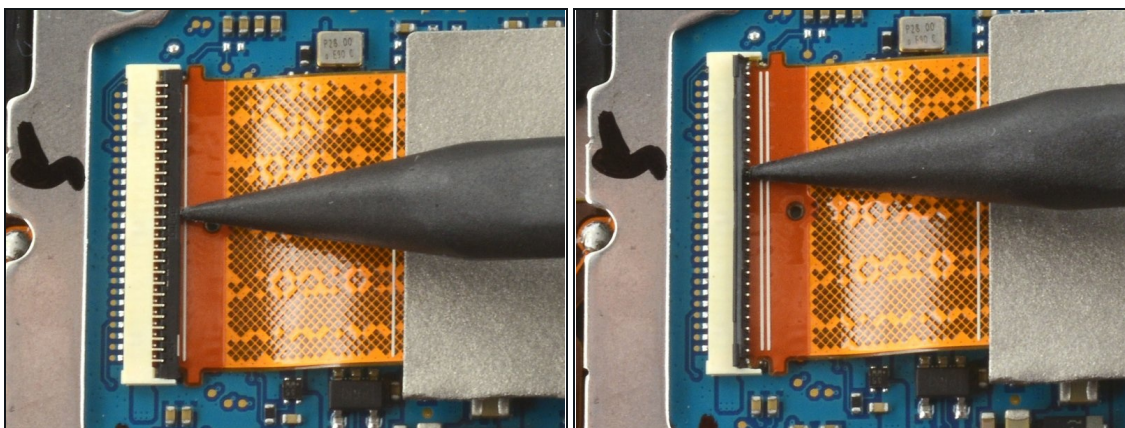
- Insert the pointed end of a spudger into the hole on the ribbon cable in the bottom left corner of the motherboard.
- Pull the ribbon straight out of the connector.

Step 18



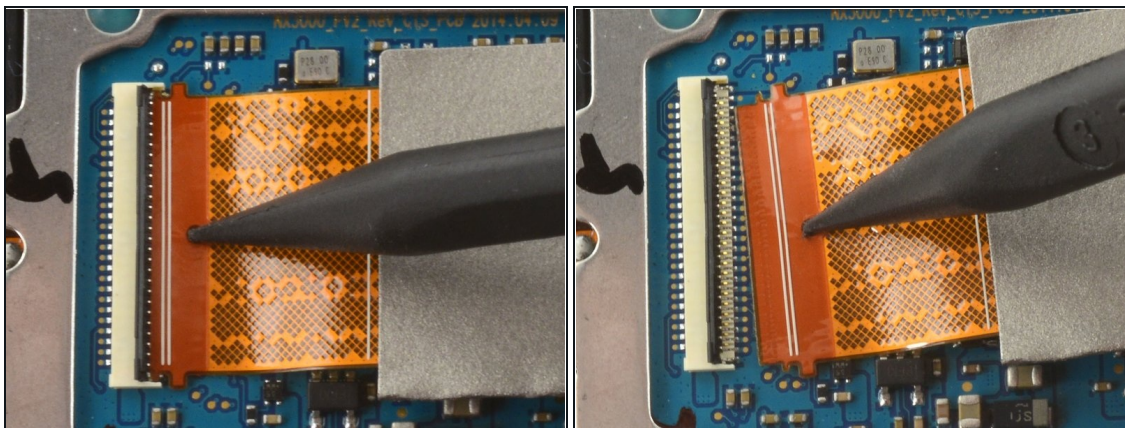
- Use tweezers to remove the green tape covering the ribbon cable on the image sensor.

Step 19



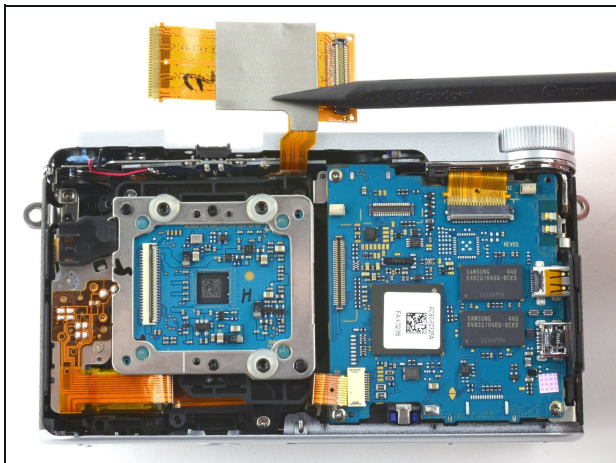
- Use the pointed tip of a spudger to flip the black bar on the ZIF connector straight up from the ribbon cable.

Step 20



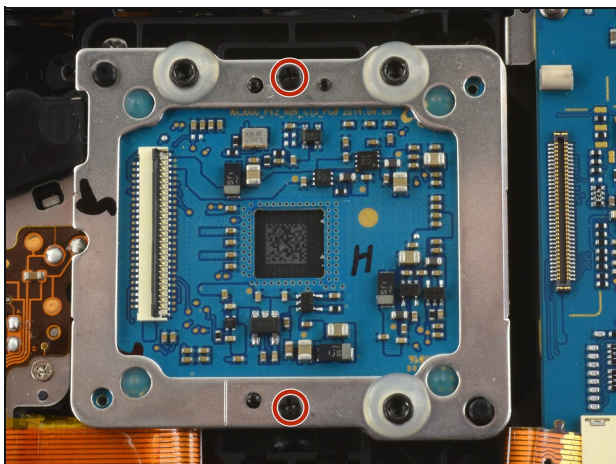
- Insert the pointed end of a spudger into the hole on the ribbon cable.
- Pull the ribbon cable straight out of the connector.

Step 21



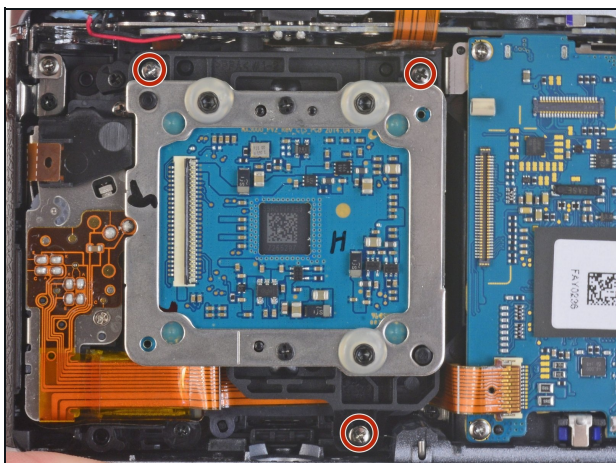
- Use a spudger to peel back the large ribbon cable on the sensor assembly.
- ⓘ The ribbon cable may be attached with adhesive.

Step 22



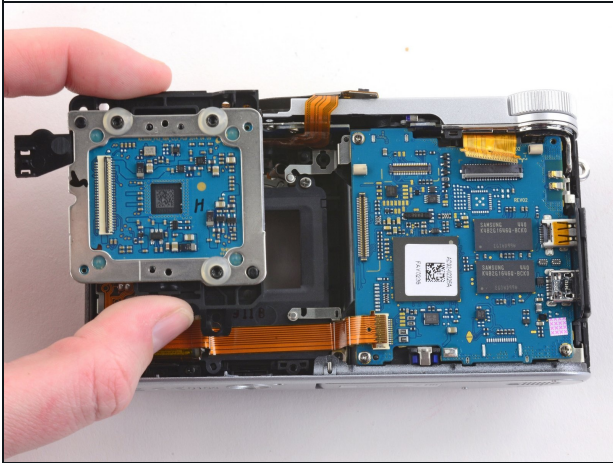
- Remove the two black 3.8 mm Phillips screws on the sensor assembly.

Step 23



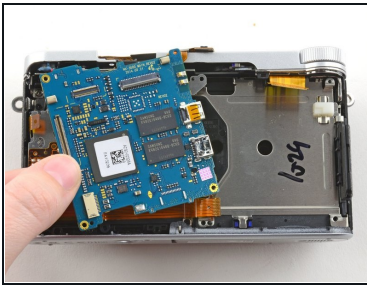
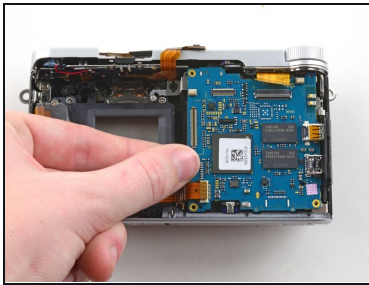
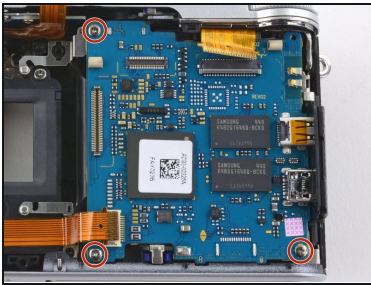
- Remove the three 5.3 mm Phillips screws holding the sensor assembly in place.

Step 24



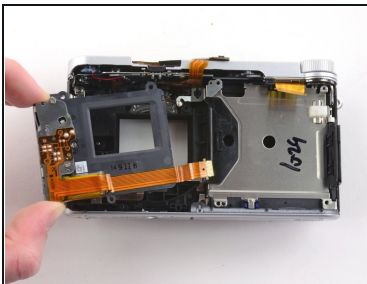
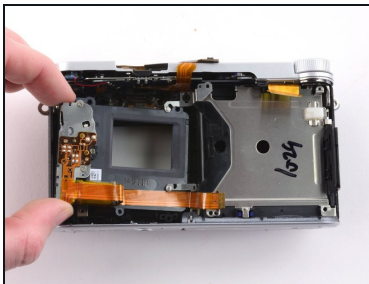
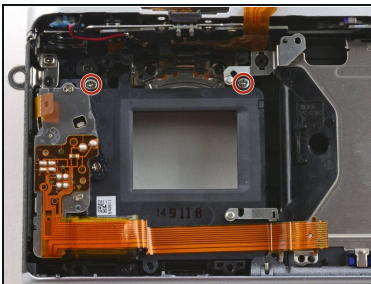
- Remove the image sensor.

Step 25



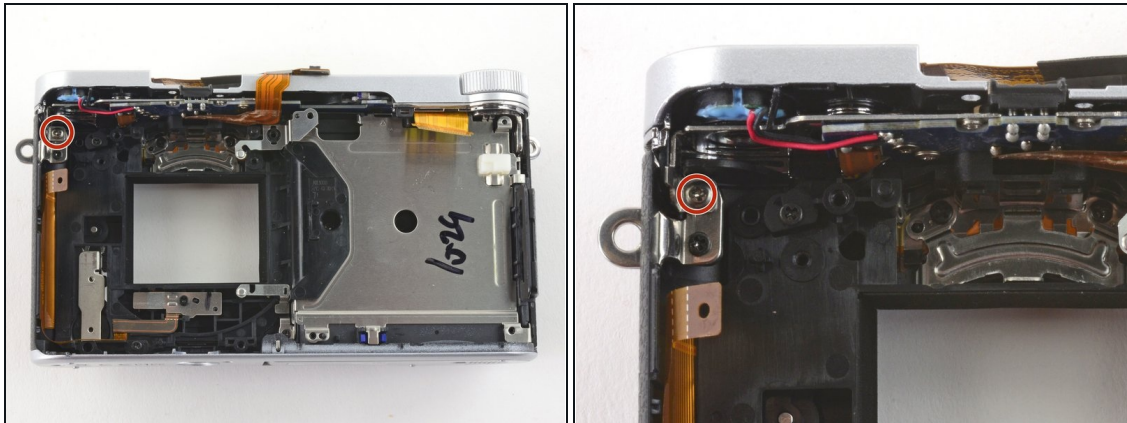
- Remove the three 4.3 mm Phillips screws from the motherboard.
- Remove the motherboard from the camera.

Step 26



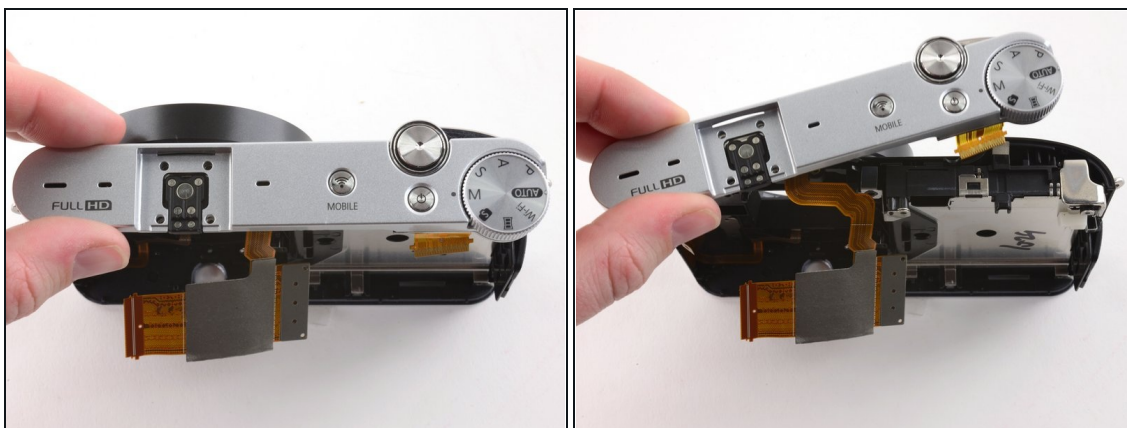
- Remove the two 5.3 mm Phillips screws holding the sensor frame to the case.
- Remove the sensor frame.

Step 27



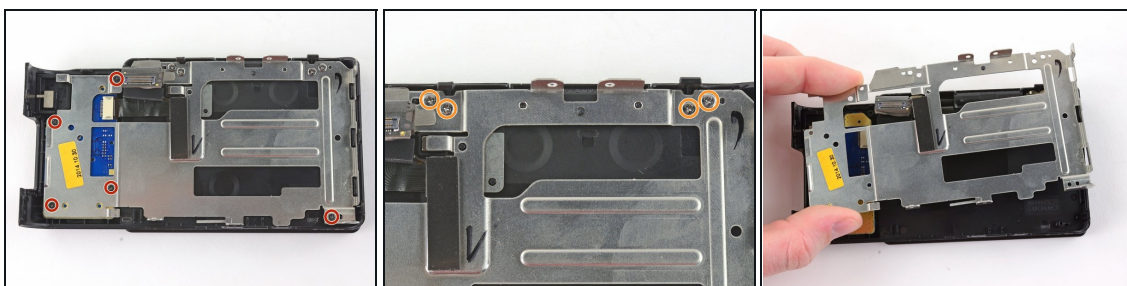
- Remove the 4.3 mm Phillips screw in the upper left corner that secures the top plate to the front case

Step 28



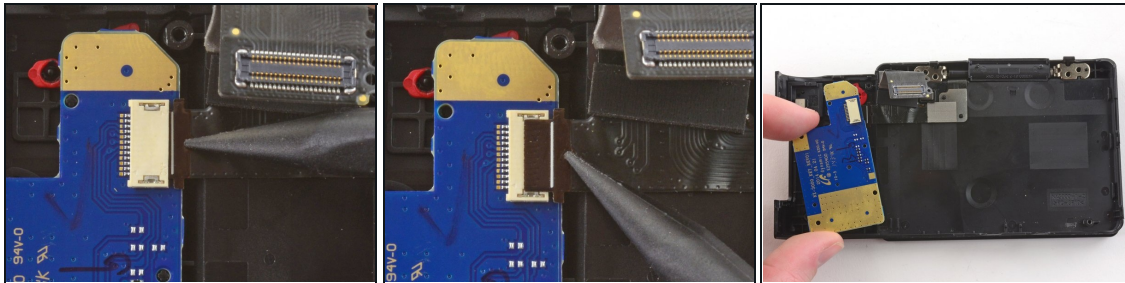
- Remove the top plate.

Step 29



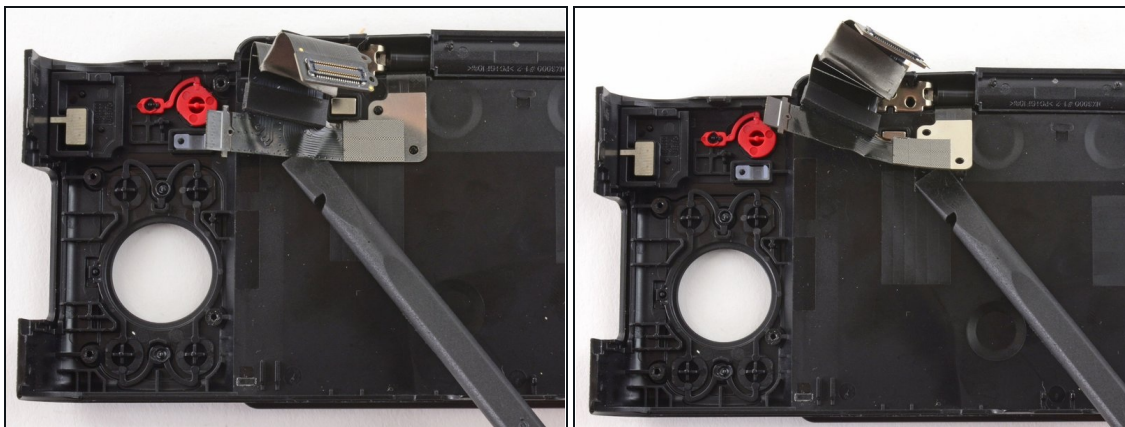
- To remove the metal shield on the back case, remove the following screws:
- Five black 4.2 mm Phillips screws .
- Four silver 5.3 mm Phillips screws.

Step 30




- Use the pointed end of a spudger to remove the ribbon cable attaching the button panel to the back case.
- Remove the button panel.

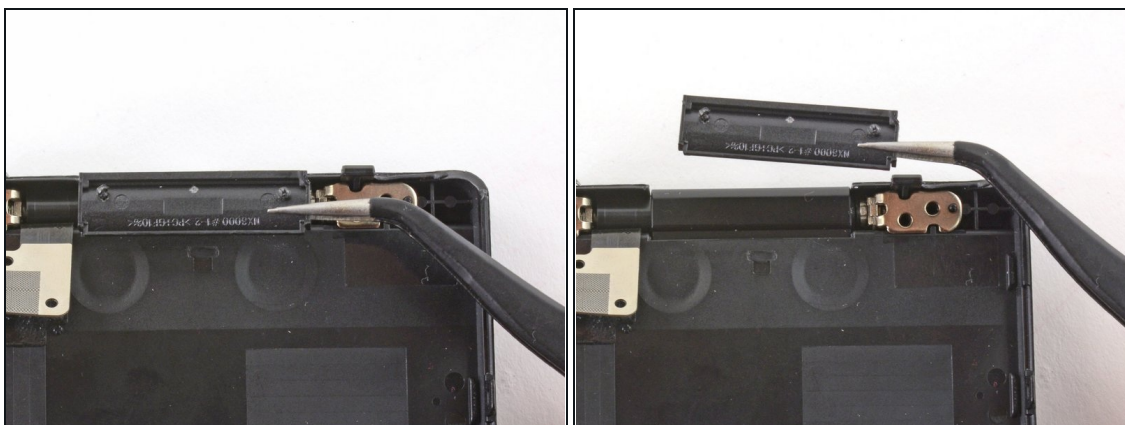
Step 31



- Use a spudger to peel back the LCD ribbon from the back case.

 The ribbon is held in place by adhesive.

Step 32



- Use tweezers to remove the plastic cover on the LCD hinge.

Step 33



- Tilt the LCD so it lays flat against the back case.
- Wiggle the LCD joints and pull the LCD away from the back case.

Step 34



- You have successfully disassembled the Samsung NX 3000!

To reassemble your device, follow these instructions in reverse order.