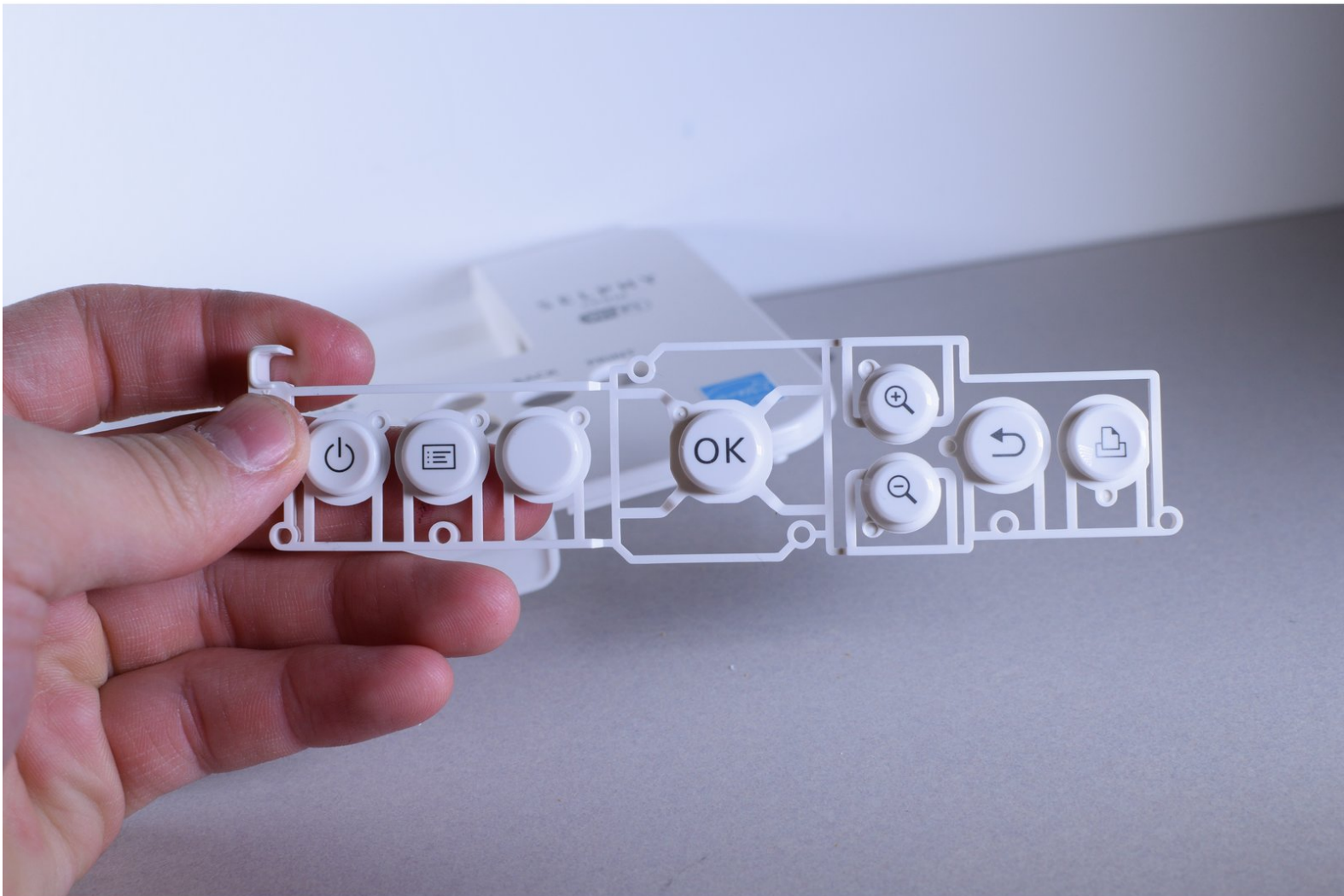




# Canon Selphy CP910 Buttons Replacement

This guide will show you how to replace the buttons in the Canon Selphy CP910.

Written By: Christie Peralta



---

## INTRODUCTION

The Canon Selphy CP910 is used to print pictures from a camera and WiFi connection. If there are any issues with the buttons on the printer, it may be necessary to remove them. For information regarding troubleshooting issues with the Canon Selphy CP910, go to [Canon Selphy CP910 Troubleshooting](#).

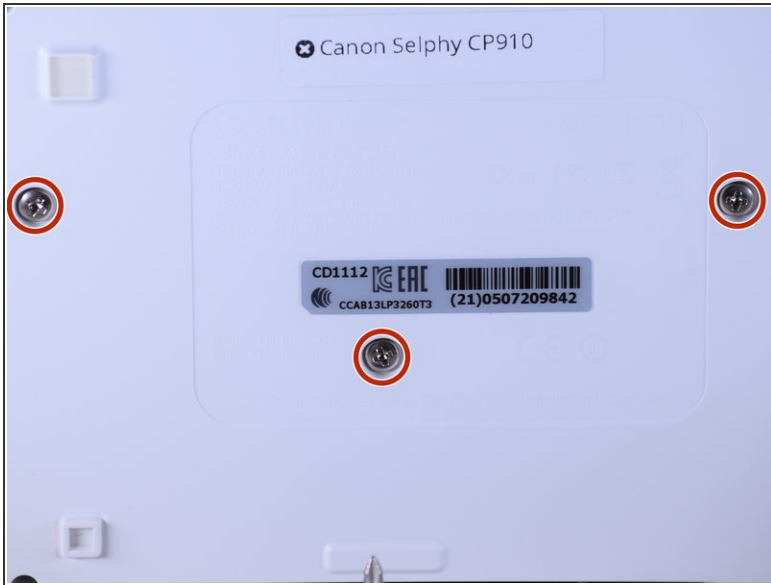
Contact the manufacturer for inquiries about receiving parts of the Canon Selphy CP910.



### TOOLS:

- [Phillips #1 Screwdriver](#) (1)
  - [64 Bit Driver Kit](#) (1)
-

## Step 1 — Disassembling Canon Selphy CP910 Body



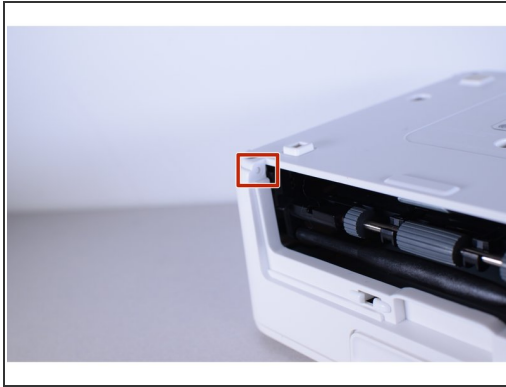
- Turn the printer over.
- Use the PH1 screw bit to remove the three 8 mm screws in the middle of the back plate.
- ☑ Keep track of these screws because you will need them to reassemble the printer.

## Step 2



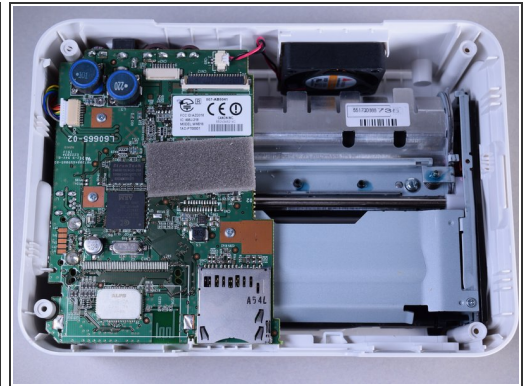
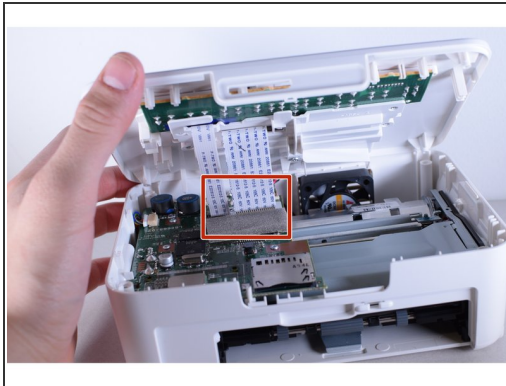
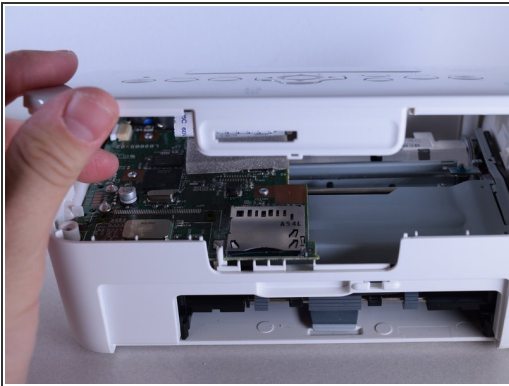
- Loosen up the four 10 mm corner screws.
- ⓘ A screwdriver with a long shaft approximately 7mm in diameter will make it easier to reach these screws.

## Step 3



- Turn the device around and remove the "open" lid.
  - ❗ This lid needs to be removed in order to take the printer apart.
- Gently bend the lid and remove it from its hinges.

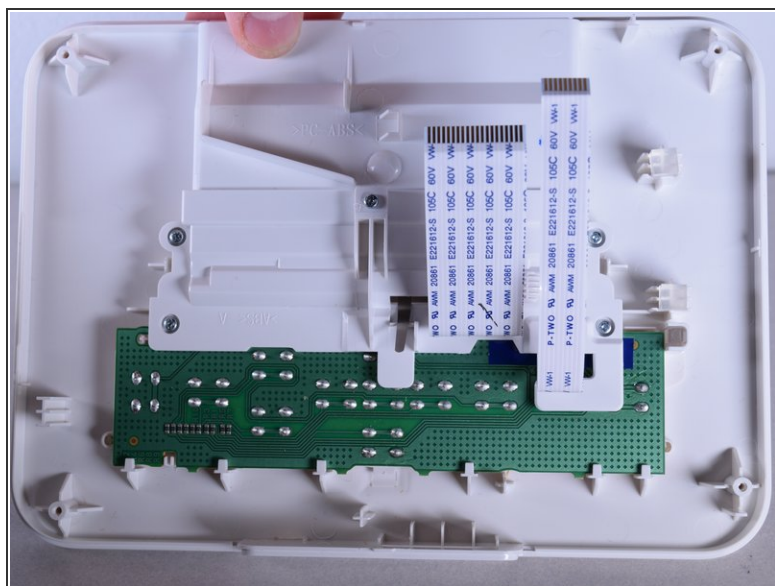
## Step 4



- Turn the device back over and lift the top panel up.
- Disconnect the ribbon cables leading to the LCD screen.
- Pull the top panel off.

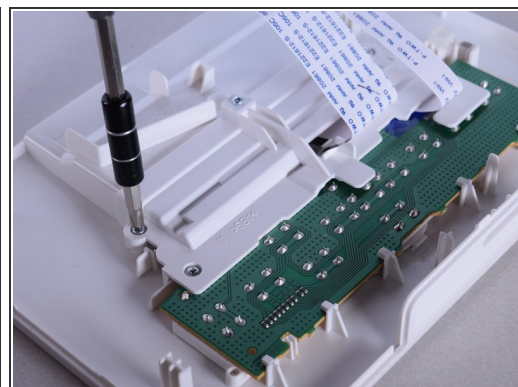
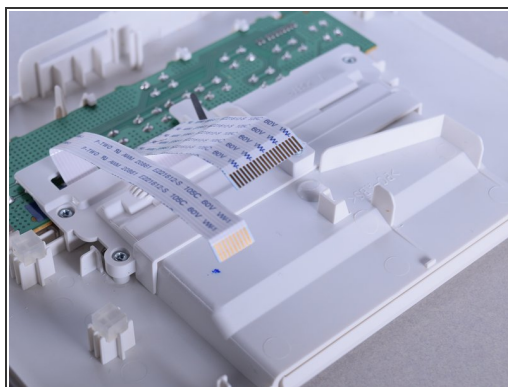


## Step 5 — Buttons



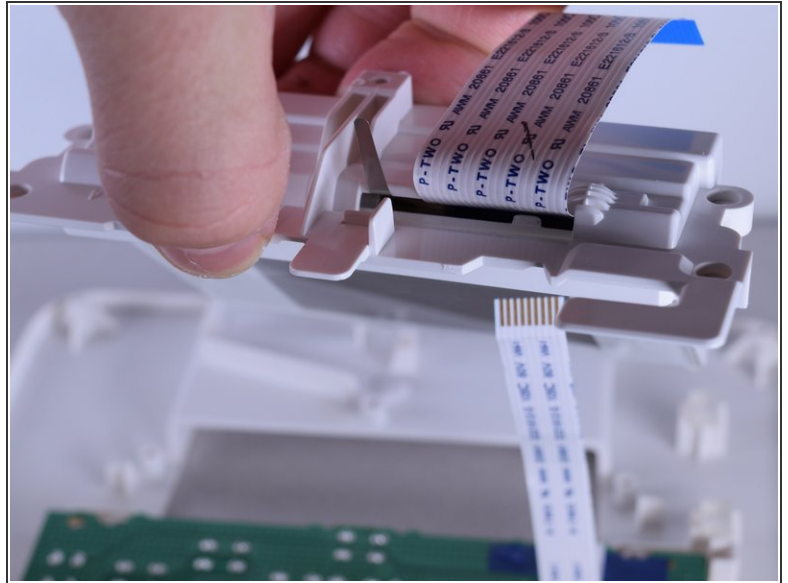
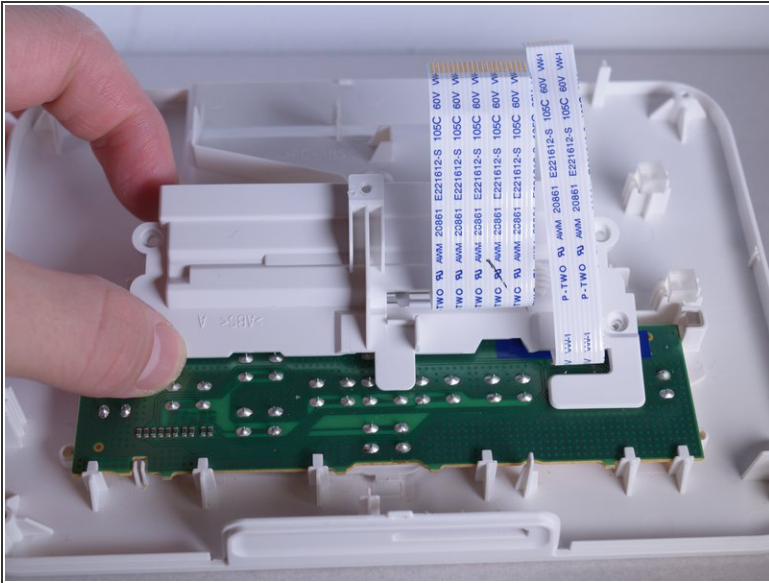
- Turn the top panel over so the inside faces toward you.

## Step 6



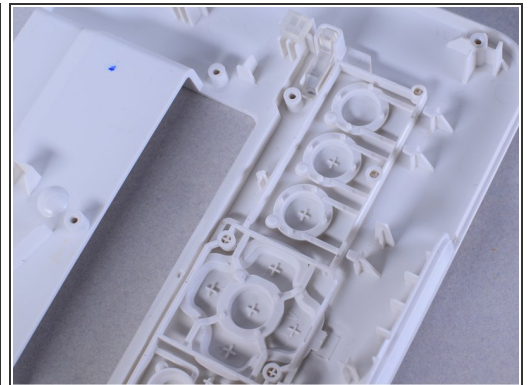
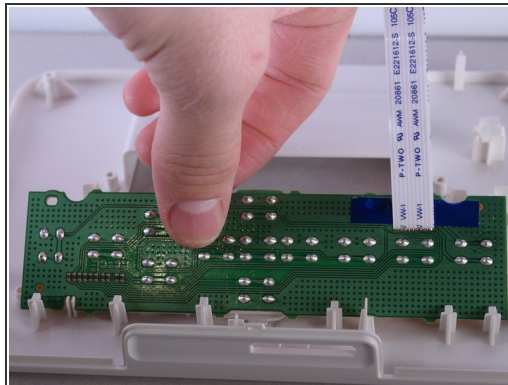
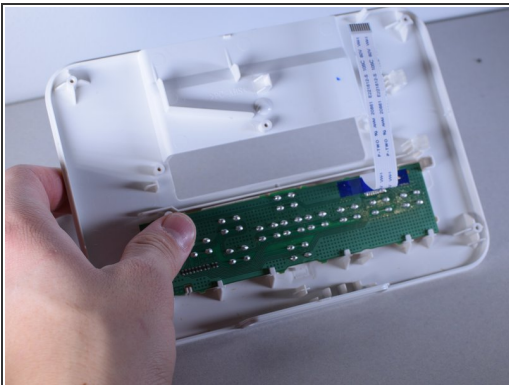
- Use the PH0 screw bit to remove the five 10 mm screws located above the circuit board.

## Step 7



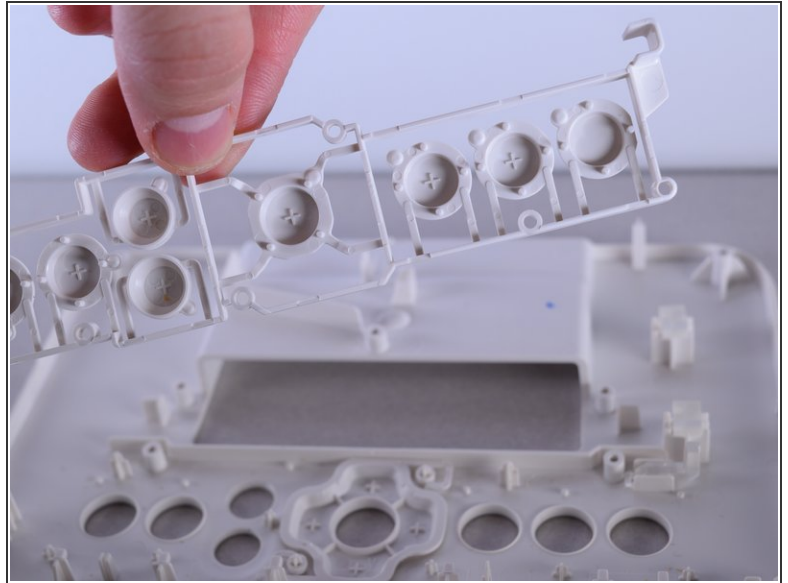
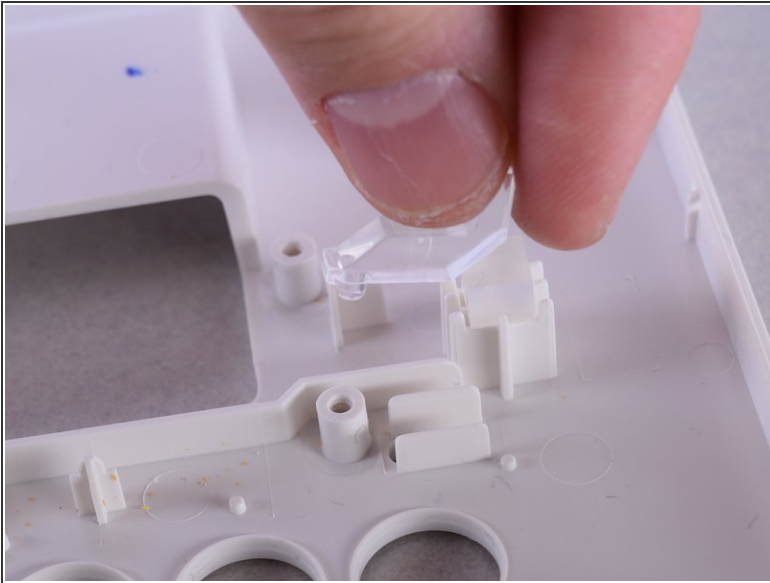
- Carefully remove the frame attached to the screen.

## Step 8



- Take out the circuit board.
- ❗ Once you take out the circuit board, you should be left with just the case.

## Step 9



- ⓘ There is a clear plastic “L” shaped piece that acts as the power light for the printer. The piece is not attached to the printer so take care not to lose it.
- Remove the button framework and replace it with new one.

To reassemble your device, follow these instructions in reverse order.