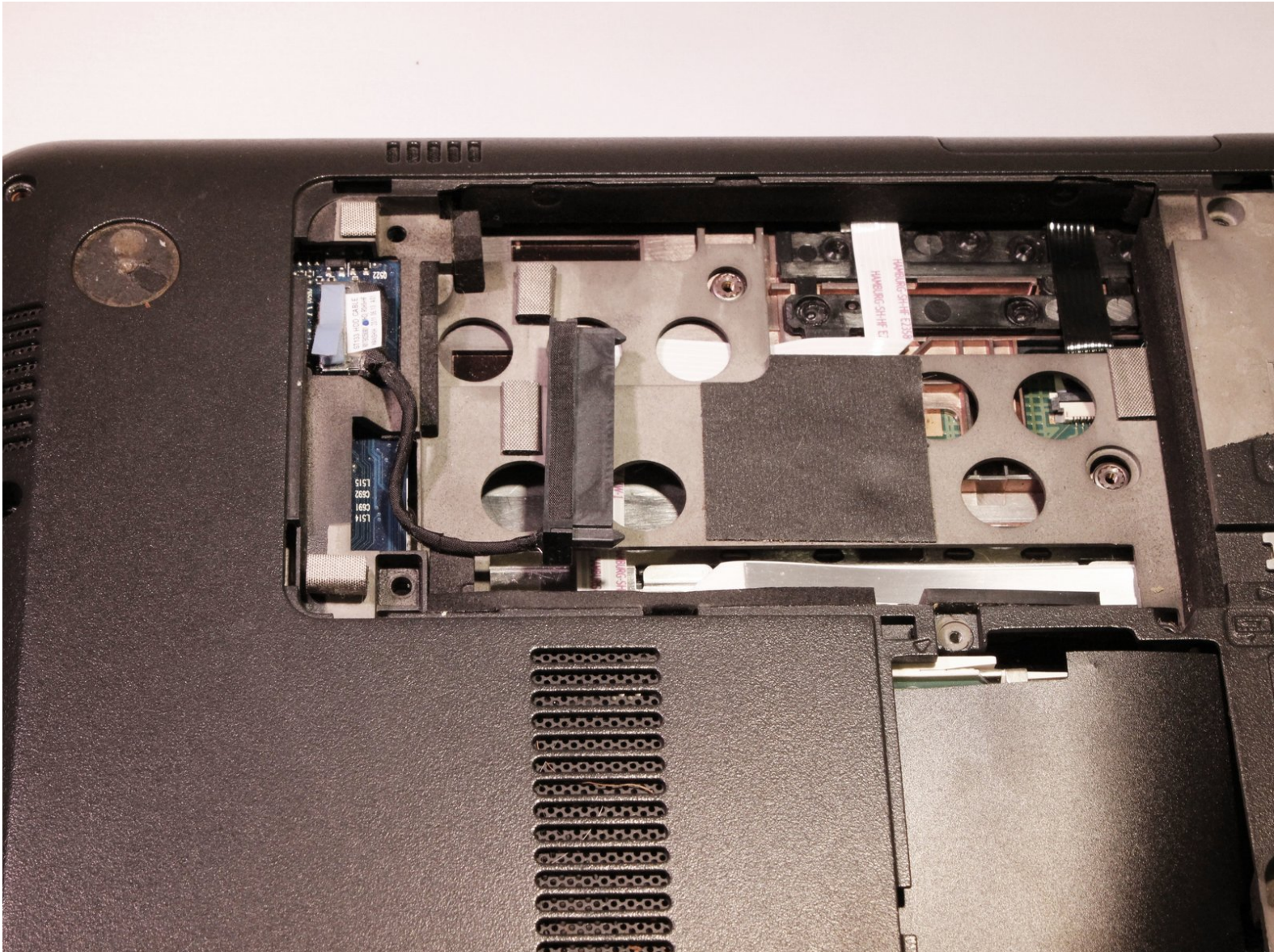




# HP Pavillion dm4t-2100 Hard Drive

This part of the guide will take you through the steps to remove the computer's hard drive.

Written By: Brandon Snyder



---

## INTRODUCTION

To remove the hard drive you will need a Phillips PH1 screw driver. Caution not all screws will completely detach.

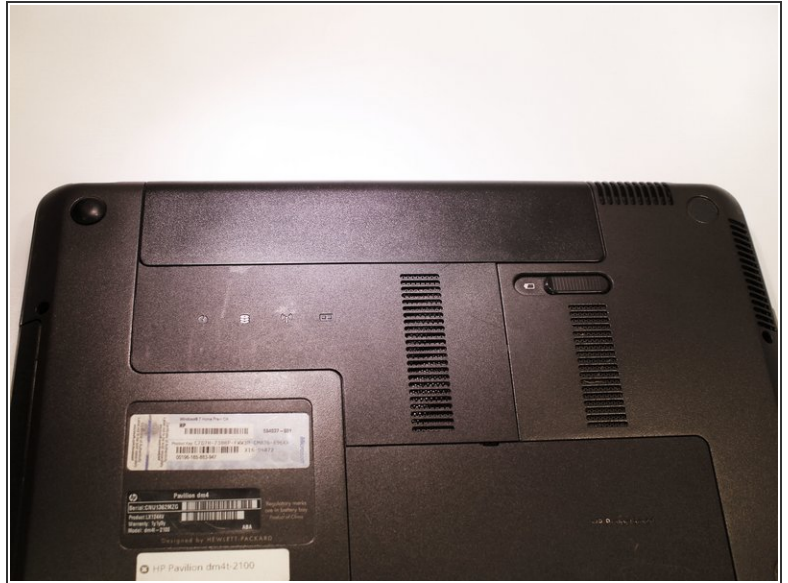


### TOOLS:

- [Phillips #1 Screwdriver](#) (1)
-

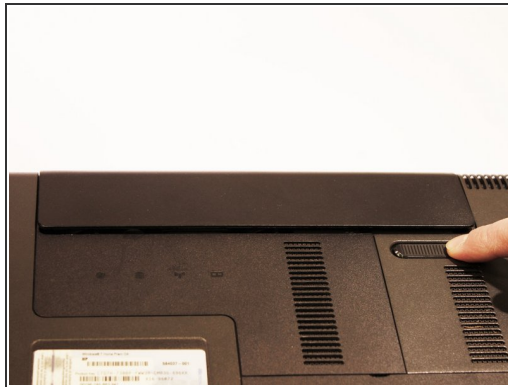


## Step 1 — Battery



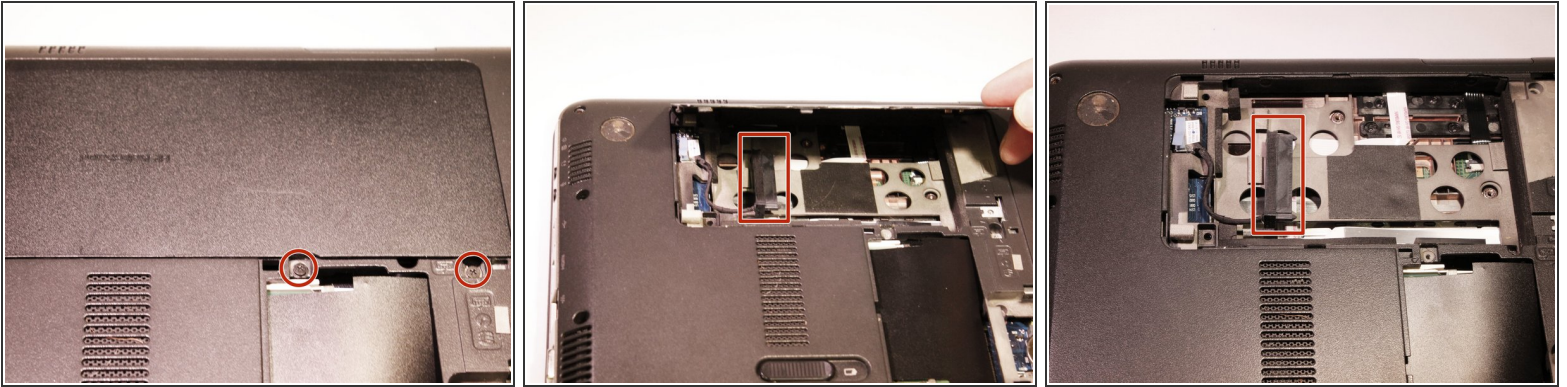
- Shut down the computer.
  - ⚠ Shutting down the computer by holding power button can cause damage to computer.
- Turn computer upside down so the base is facing upward.

## Step 2



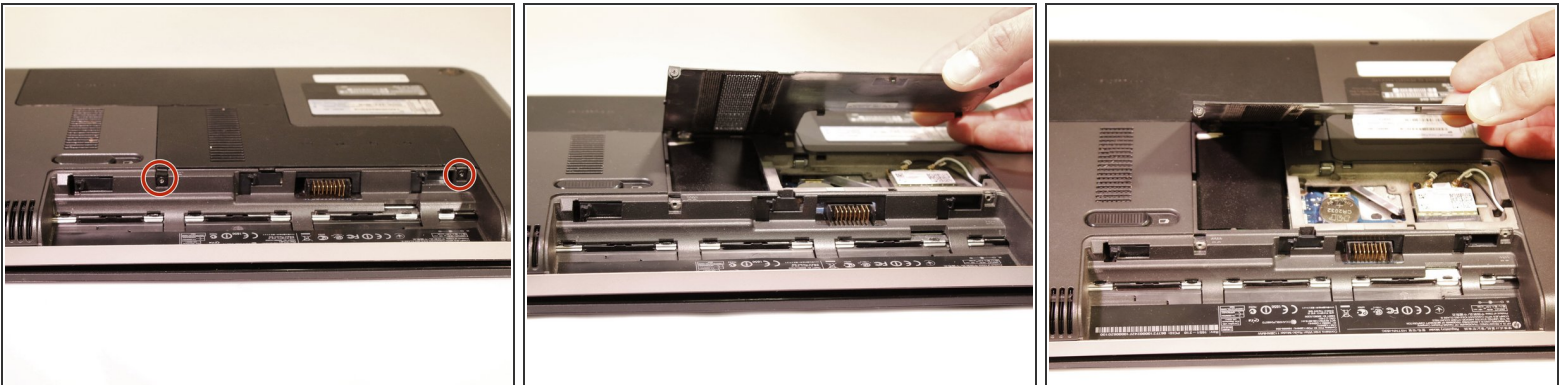
- Slide latch next to battery icon until battery pops up.
- Pull the battery away from the computer until completely detached.

## Step 3 — Hard Drive



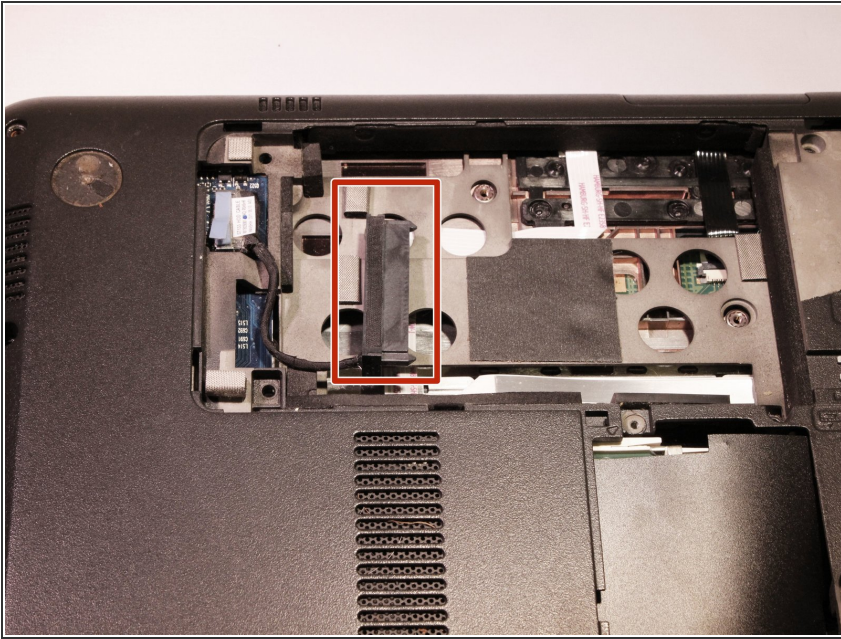
- Position the computer so the front is towards you.
- Remove two 5mm Phillips #1 screws
- Slide the hard drive cover towards the empty battery spot and remove it.

## Step 4



- Loosen two 5mm Phillips #1 screws securing plastic cover, until cover is detachable.
- Slide cover toward empty battery area and remove it.

## Step 5



- Disconnect the hard drive cable that is plugged in.
- Lift the tab on the hard drive to pull it out of the computer.
- Hard Drive is removed.

To reassemble your device, follow these instructions in reverse order.