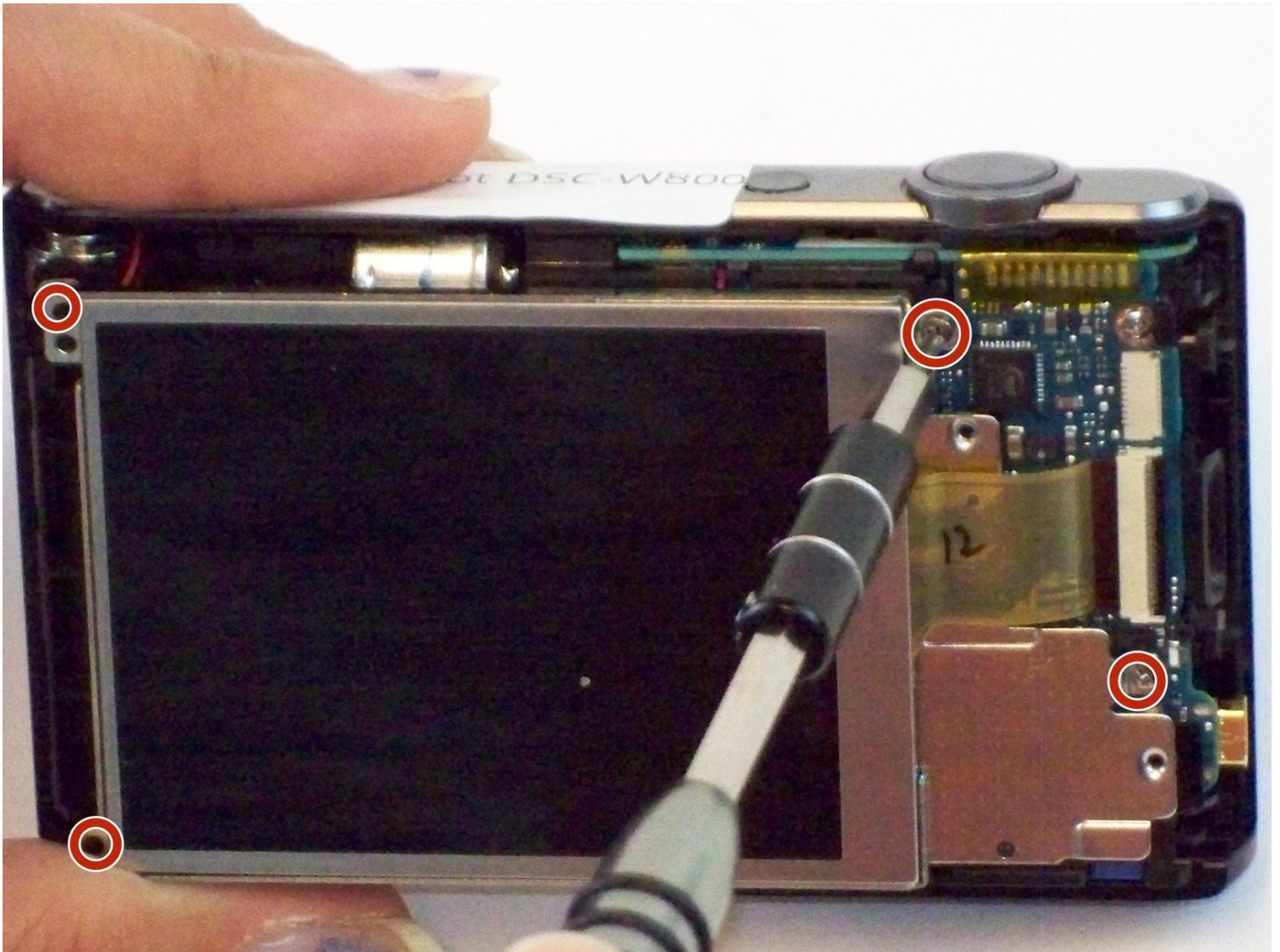




Sony Cyber-shot DSC-W800 LCD Screen Replacement

Some things to consider before you work on the ...

Written By: Thomas Campo



INTRODUCTION

Some things to consider before you work on the Sony Cyber-shot DSC W800 to replace the LCD Screen:

- The LCD Screen is an integral part of the device and any improper handling can cause issues in other parts of the camera.
- Be cautious when removing ribbon wires.
- Be sure to keep track of all pieces that are taken apart.

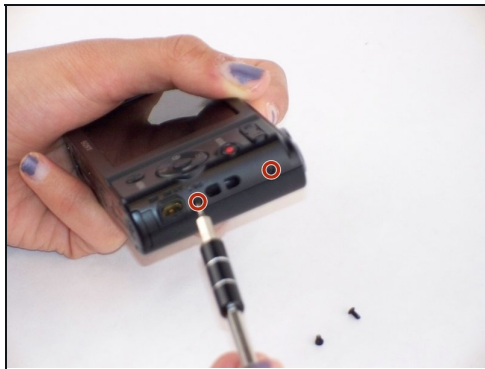
TOOLS:

Spudger (1)

Tweezers (1)

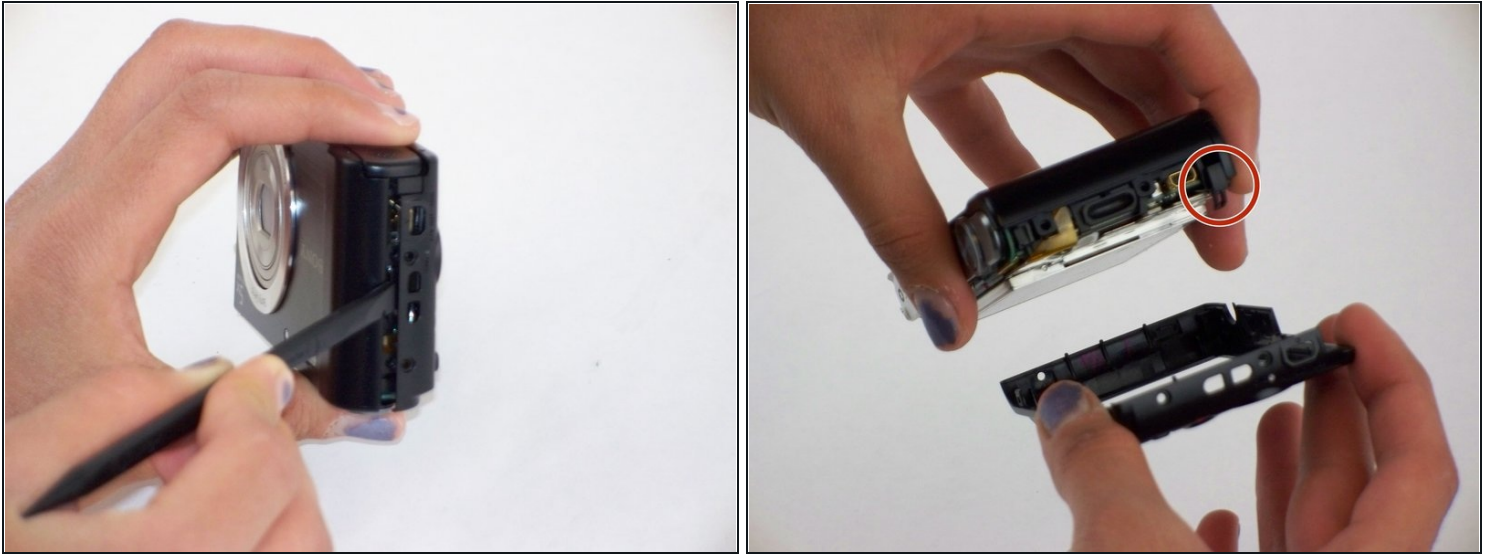
Phillips #000 Screwdriver (1)

Step 1 — Button Board



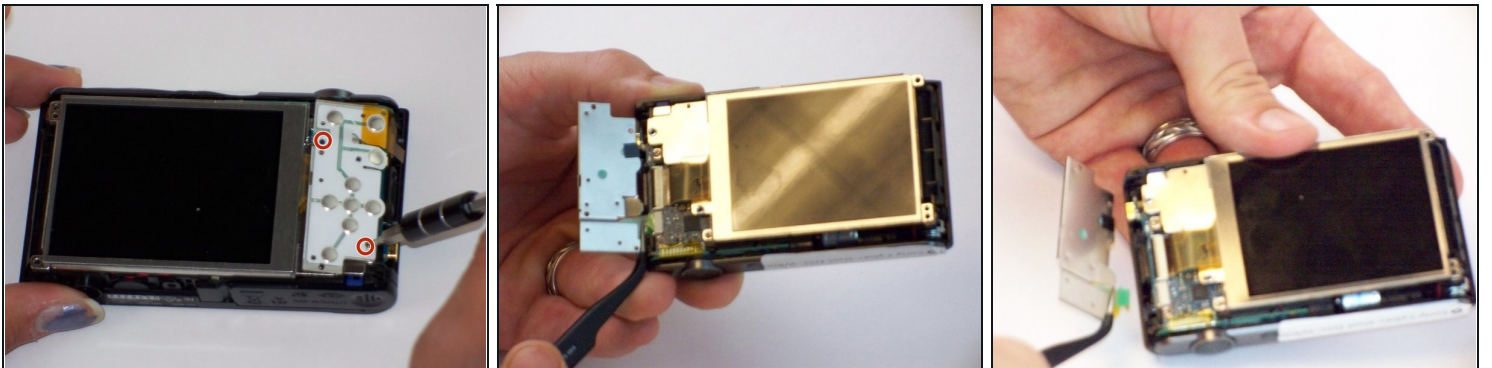
- Remove the five 4.0 mm Phillips #000 screws on the back panel.

Step 2



- Using the Spudger, remove the back panel from the device.
- The loose piece circled in the picture will most likely fall off the camera housing.

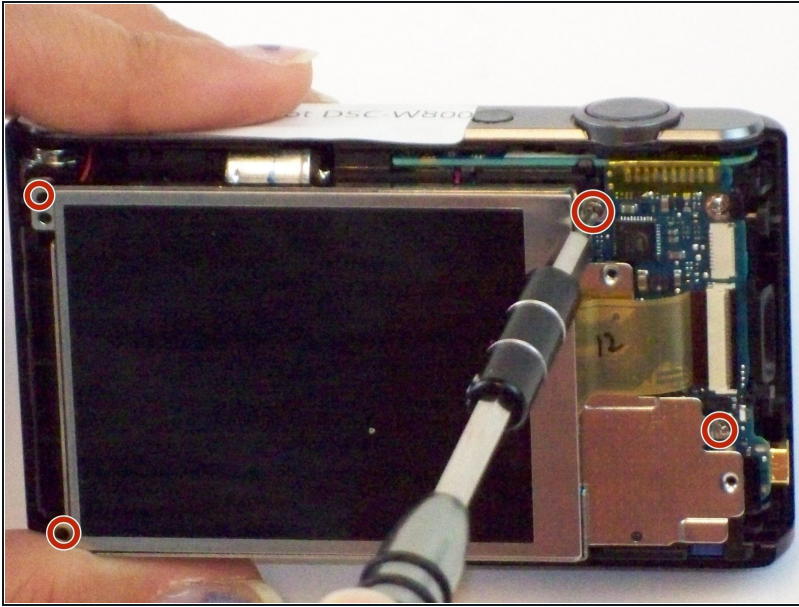
Step 3



- Remove the two 2.15mm Phillips #000 screws from the circuit board.
- Gently pull on the ribbon wire from ZIF connector with the [tweezers](#) to remove the button board.

⚠ Ribbon wires can easily be damaged.

Step 4 — LCD Screen



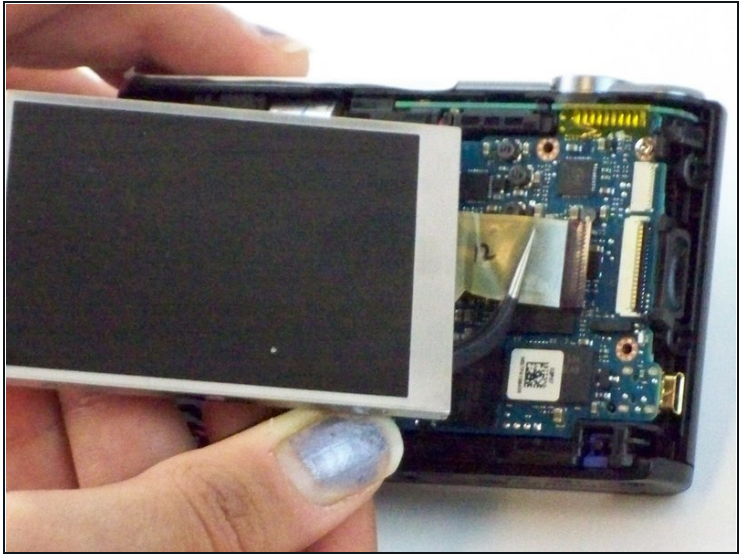
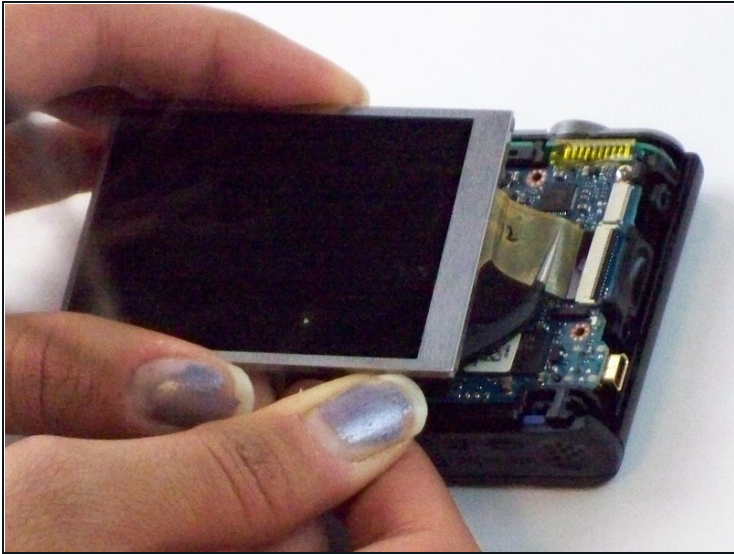
- Remove the four 3.75 mm Phillips #000 screws from the LCD back panel.

Step 5



- Lift the back panel and separate the LCD Screen by prying it up.
- Remove the back panel.

Step 6



- Gently pull on the ribbon wire disconnecting from the ZIF connector (connecting the LCD screen to the motherboard) with the [tweezers](#).

⚠ Ribbon wires can be easily damaged.

To reassemble your device, follow these instructions in reverse order.