



Sony Xperia E4 Touch Screen Glass / LCD Display Replacement

E2104, E2105, E2115, E2124...

Written By: ZFix



INTRODUCTION

E2104, E2105, E2115, E2124

How to disassemble, take apart the device and change / replace broken touch screen glass digitizer, LCD

[video: <https://www.youtube.com/watch?v=dIppq41LcFzk>]

TOOLS:

[iFixit Opening Picks set of 6](#) (1)

[T4 Torx Screwdriver](#) (1)

[Tweezers](#) (1)

[Heat Gun](#) (1)

[Double Sided Adhesive Tape - 3 mm Width](#)
(1)

Step 1 — Battery Cover



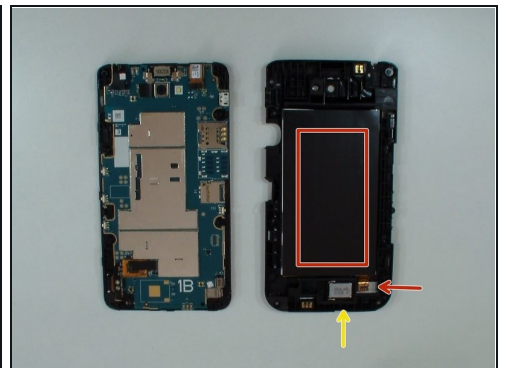
- Remove the back cover and any installed SIM and memory cards.
- There are 8x black screws Torx T4. Remove them.

Step 2



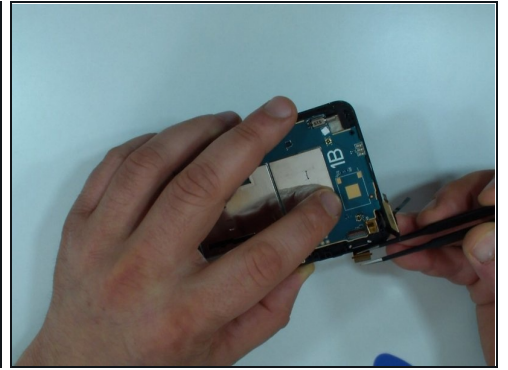
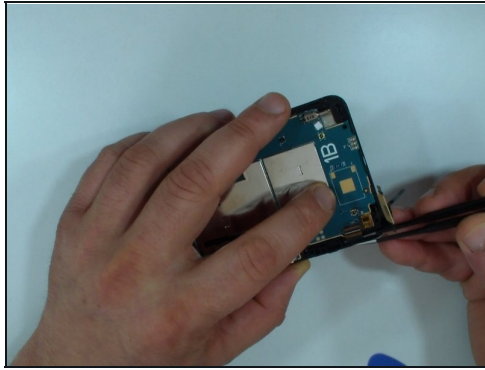
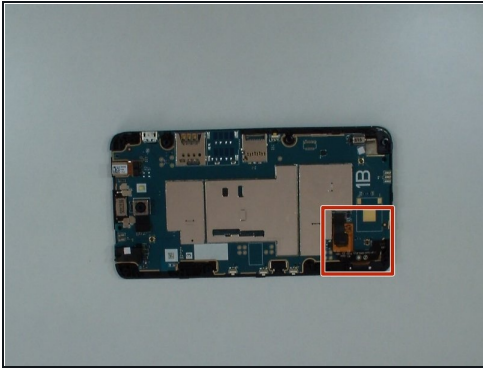
- Remove the small black rubber at the lower left corner.
- Under it is the battery flex cable, disconnect it.

Step 3



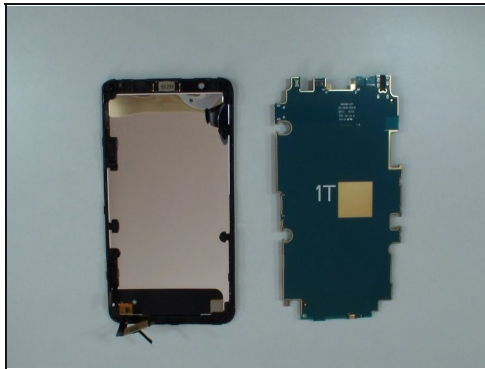
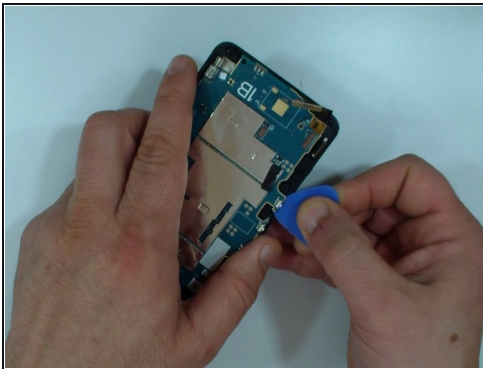
- Use a plastic tool to separate the middle frame.
- The battery is glued to the middle frame with an adhesive tape.
- Loudspeaker

Step 4 — Logic Board



- Disconnect the touch screen flex cable.
- Under it is the LCD flex cable. Disconnect it also.

Step 5



- Remove the logic board.

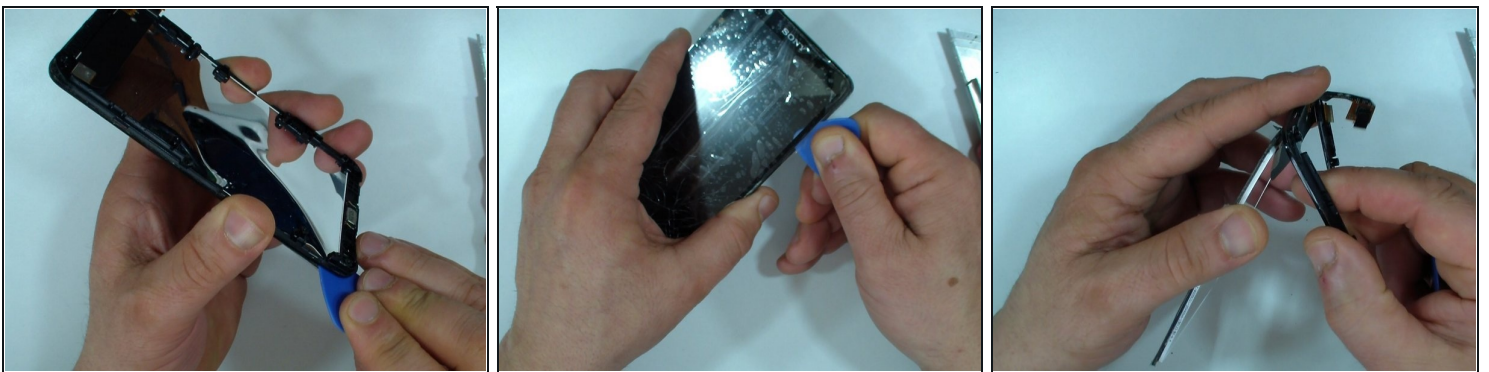
⚠ Be careful for the flex cables.

Step 6 — Touch Screen Glass / LCD Display



- Cover the glass with a scotch tape.
- Warm the glass for about minute.
- With a cutter lift a little the glase to make a room for the plastic tool.

Step 7



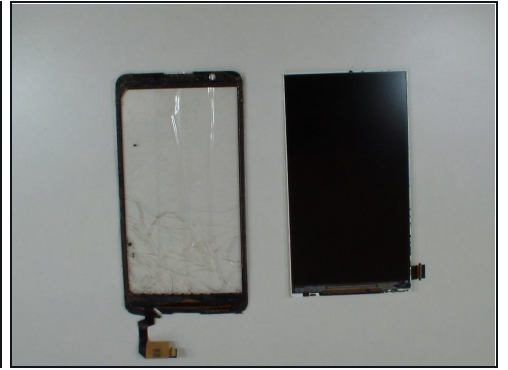
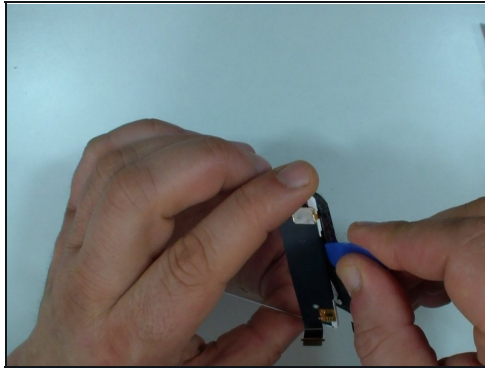
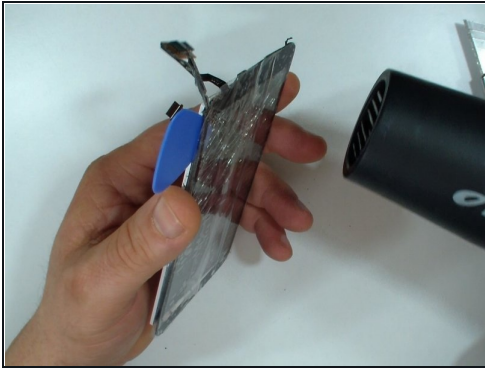
- Carefully put the plastic tool between the glass and the LCD.

⚠ The tool must be thin, you can use also a [plastic card](#).

⚠ Periodically warm the glass.

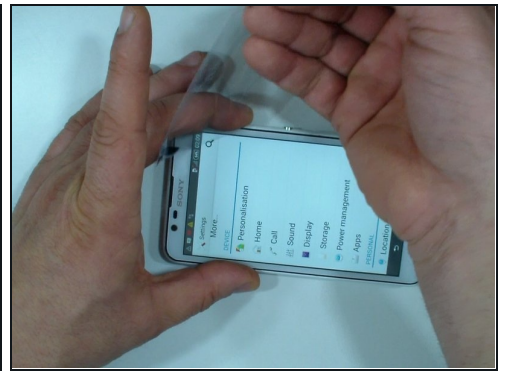
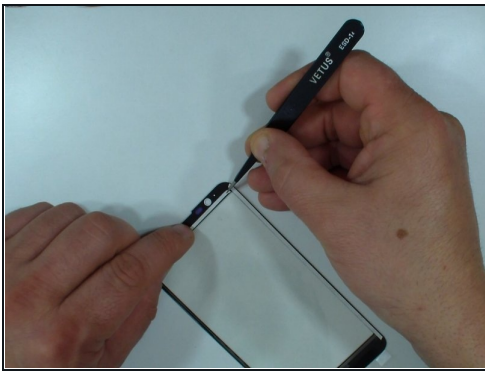
- Remove the display frame.

Step 8



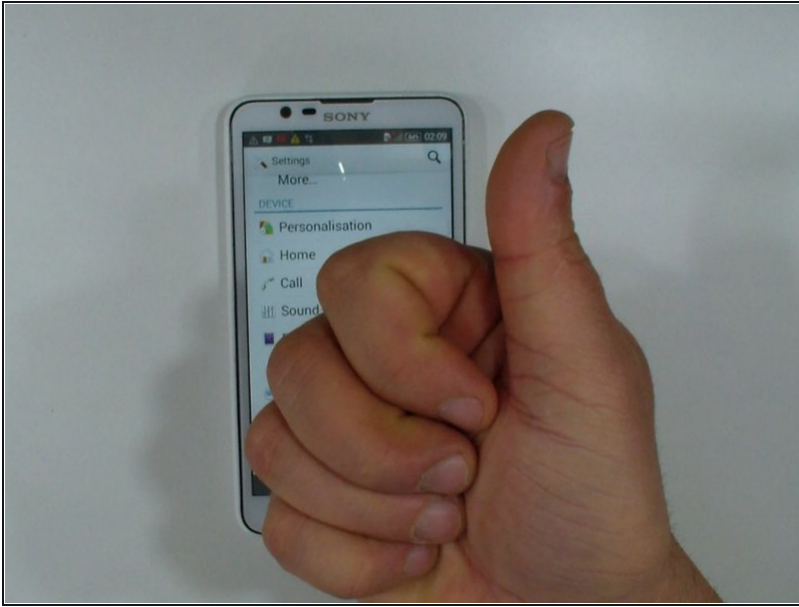
⚠ Use only plastic tools and don't force the LCD.

Step 9



- Install adhesive tape.
- ① It's easier if you order your touch screen together with adhesive sticker.
- Start with the reassembling.

Step 10



- **That's all.**

To reassemble your device, follow these instructions in reverse order.